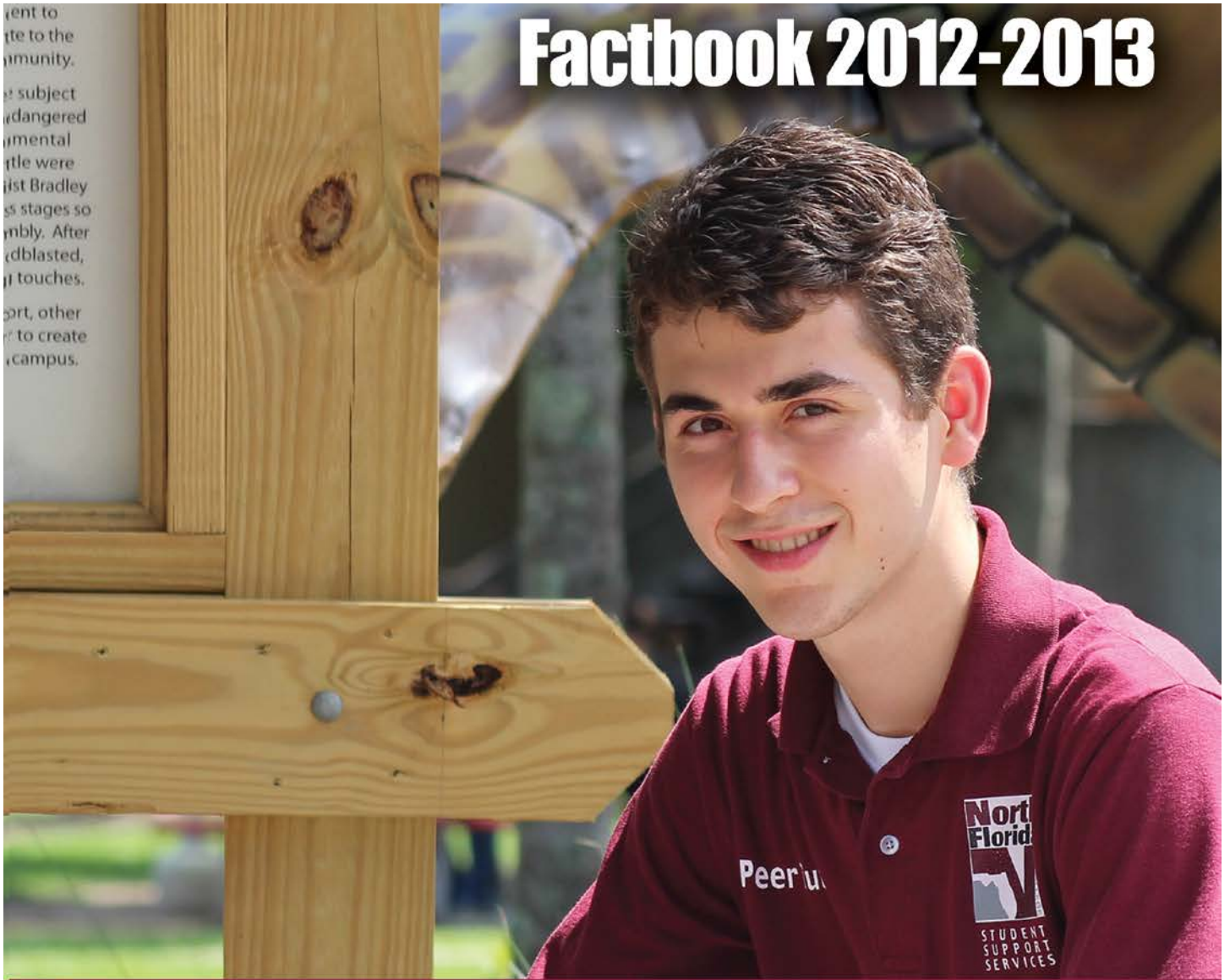


# Factbook 2012-2013

ent to  
ite to the  
community.  
e subject  
endangered  
mental  
tle were  
ist Bradley  
s stages so  
nably. After  
dblasted,  
i touches.  
part, other  
r to create  
campus.



*Beyond Education....*



## EXPERIENCE NFCC

North Florida Community College cares about your hopes, your dreams and your future. We offer a unique college experience where students are more than just a number. Our students are individuals and we know each student is as unique as we are.





# NFCC

*Small College. Big Possibilities.*

Our mission is to provide innovative solutions and quality support services to help members of our College community effectively achieve their goals. The 2012-2013 NFCC Fact Book provides information about North Florida Community College and includes student, financial, and personnel data. We have made every effort to ensure timely and accurate information. We hope you will use this publication on a continual basis. We welcome feedback and suggestions, and our measure of success is the degree to which people find this publication informative and useful.

# Table of Contents

---

## **Enrollment**

Student Headcount.....	5
FTE.....	5
By Program.....	6
By County .....	8
By Gender.....	12
By Age .....	13
By Ethnicity.....	14
By Time of Day .....	17
Instructor/Student Ratio.....	17

## **Student Success**

Degrees Awarded .....	19
Graduates by Program.....	19
First Time in College Retentions.....	20
College Preparatory Retentions.....	21
Vocational Placement.....	22
Student Transfer Data .....	23
Grade Distribution .....	24

## **Distance Learning**

Total Courses and Students .....	26
Student Demographics .....	27

## **Dual Enrollment**

Enrollment & Cost by County.....	29
----------------------------------	----

## **Financial Aid**

Total Distribution .....	33
Awards by County .....	34

## **Other Information**

NFCC Library .....	37
NFCC Foundation .....	39
Personnel .....	41
Finances .....	43
District Data (2010 Census).....	46
Glossary of Terms .....	52





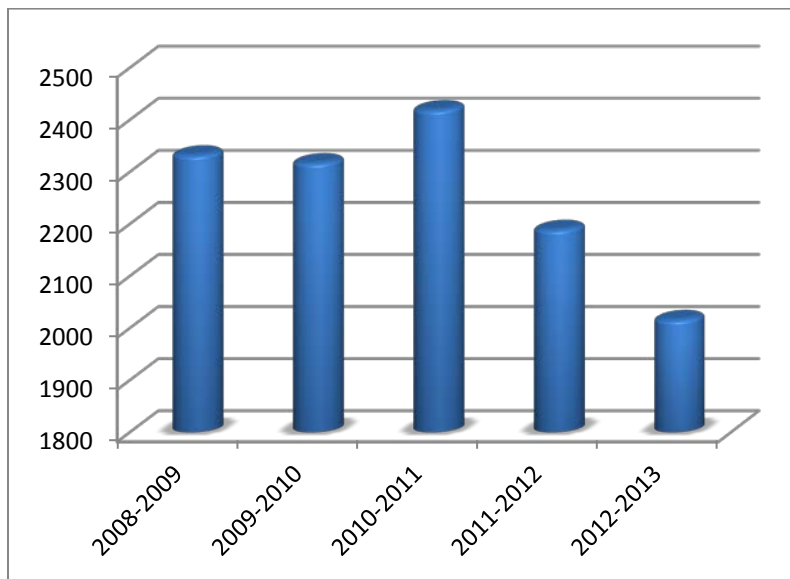
# ENROLLMENT



# Section 1: Enrollment

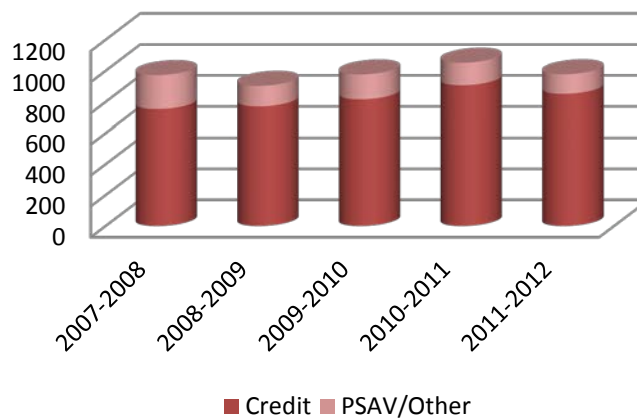
## Total Student Headcount (2008-2013)

	2009-2010	2010-2011	2012-2013	2012-2013
	2332	2317	2419	2189
				2016



## Total Student FTE (2008-2013)

	2008-2009	2009-2010	2010-2011	2012-2013	2012-2013
<b>Credit</b>	771	816	907	852	783
<b>PSAV/Other</b>	132	160	145	126	129
<b>Total</b>	<b>903</b>	<b>976</b>	<b>1052</b>	<b>978</b>	<b>912</b>

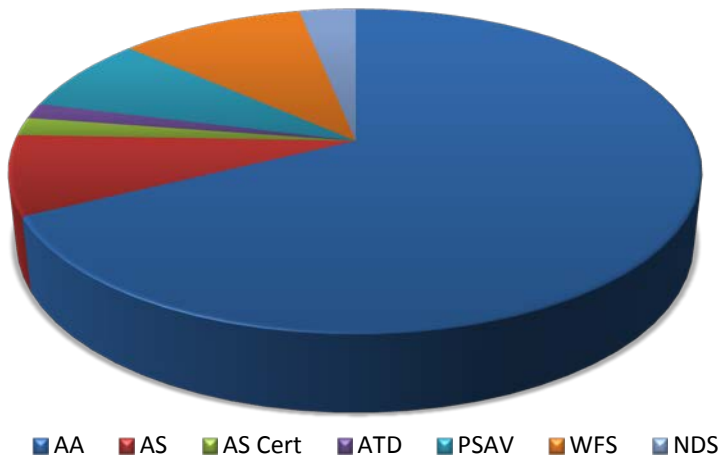


# Enrollment

---

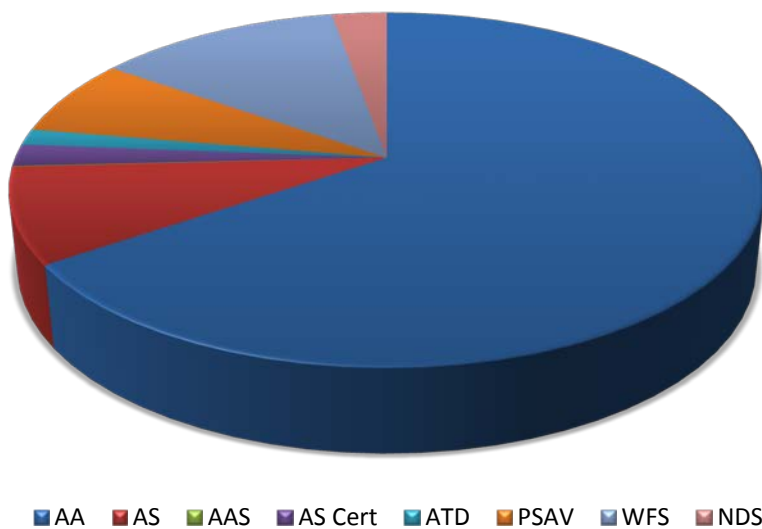
## Enrollment by Program (2012-2013)

Fall 2012



Program:		
AA	968	68%
AS	113	8%
AS Cert	26	2%
ATD	22	2%
PSAV	109	8%
WFS	147	10%
NDS	45	3%
<b>Total</b>	<b>1430</b>	

Spring 2013



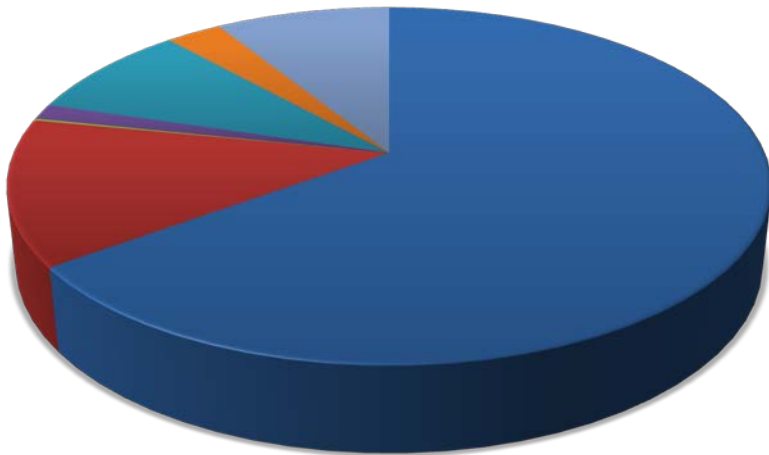
Program:		
AA	890	65%
AS	118	9%
AAS	1	0%
AS Cert	27	2%
ATD	20	1%
PSAV	96	7%
WFS	169	12%
NDS	38	3%
<b>Total</b>	<b>1359</b>	

# Enrollment

---

## Enrollment by Program (2012-2013)

Summer 2013



Program		
AA	368	65%
AS	75	13%
AAS	1	0%
ATD	8	1%
PSAV	49	9%
WFS	16	3%
NDS	50	9%
<b>Total</b>	<b>567</b>	

■ AA ■ AS ■ AAS ■ ATD ■ PSAV ■ WFS ■ NDS

### Legend of programs:

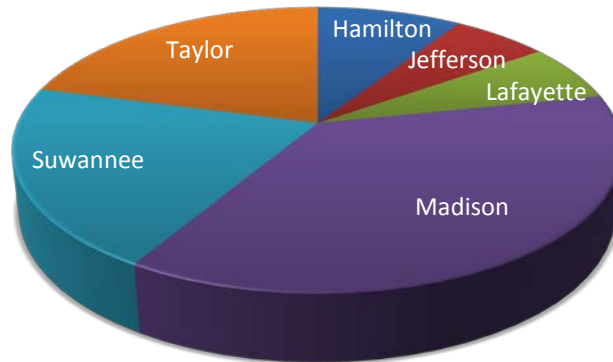
- AA: Associates in Arts
- AS: Associates in Science
- AAS: Associates in Applied Science
- AS Cert: Associates in Science Certificate
- ATD: Applied Technical Diploma
- EPI: Educator Preparation Institute
- PSAV: Post-Secondary Adult Vocational Certificate
- WFS: Workforce / Supplemental
- NDS: Non-Degree Seeking

# Enrollment

## County Enrollment by Term (2012-2013)

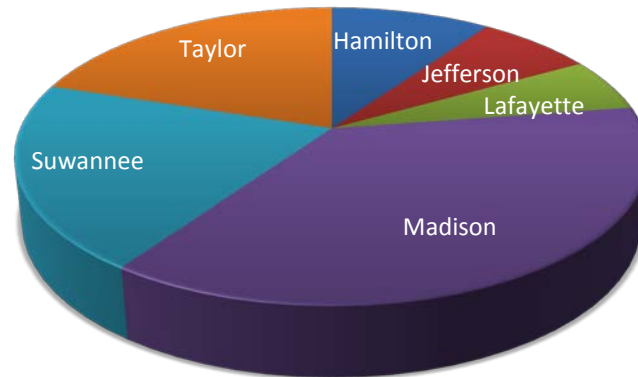
Fall 2012

County:		
Hamilton	115	8.0%
Jefferson	76	5.3%
Lafayette	82	5.7%
Madison	463	32.4%
Suwannee	258	18.0%
Taylor	262	18.3%
Other FL	146	10.2%
Out of State	28	2.0%
<b>Total</b>	<b>1430</b>	



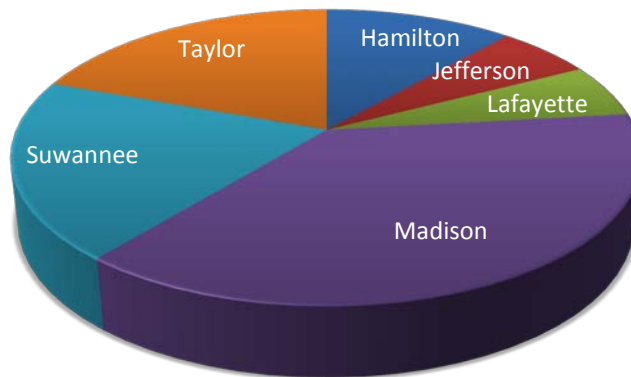
Spring 2013

County:		
Hamilton	116	8.5%
Jefferson	84	6.2%
Lafayette	69	5.1%
Madison	441	32.5%
Suwannee	241	17.7%
Taylor	238	17.5%
Other FL	149	11.0%
Out of State	21	1.5%
<b>Total</b>	<b>1359</b>	



Summer 2013

County:		
Hamilton	61	10.5%
Jefferson	31	5.3%
Lafayette	31	5.3%
Madison	200	34.5%
Suwannee	104	17.9%
Taylor	103	17.8%
Other FL	42	7.2%
Out of State	8	1.4%
<b>Total</b>	<b>580</b>	





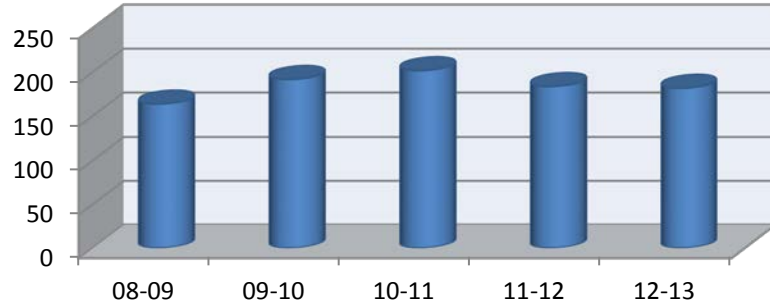
# Enrollment

---

## 5 Year County Enrollment (2008-2013)

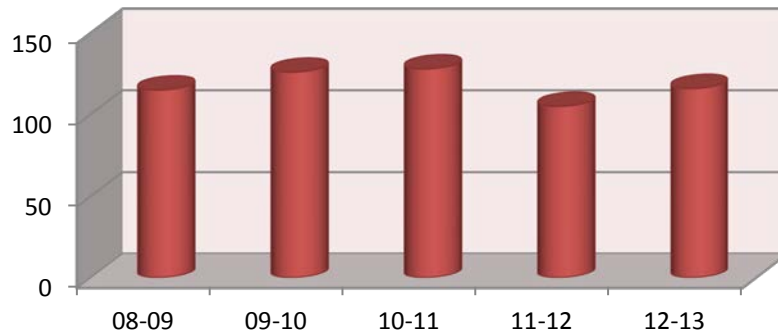
### Hamilton

08-09	164
09-10	192
10-11	202
11-12	184
12-13	182



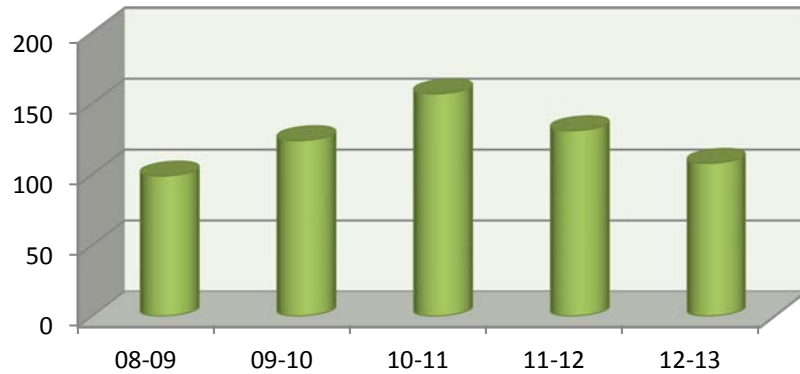
### Jefferson

08-09	115
09-10	126
10-11	128
11-12	105
12-13	116



### Lafayette

08-09	99
09-10	124
10-11	157
11-12	131
12-13	108

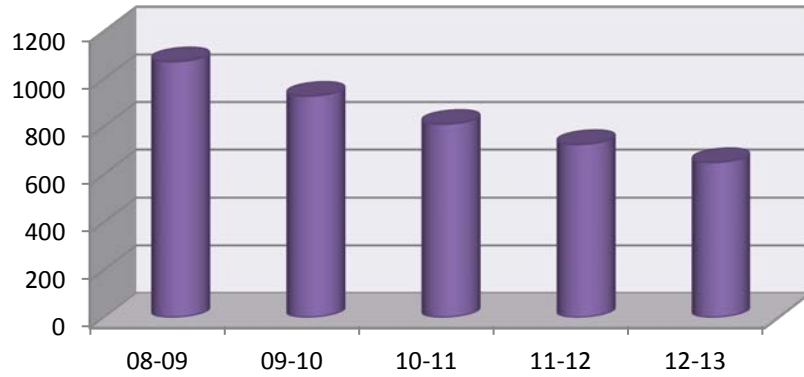


# Enrollment

## 5 Year County Enrollment (2008-2013)

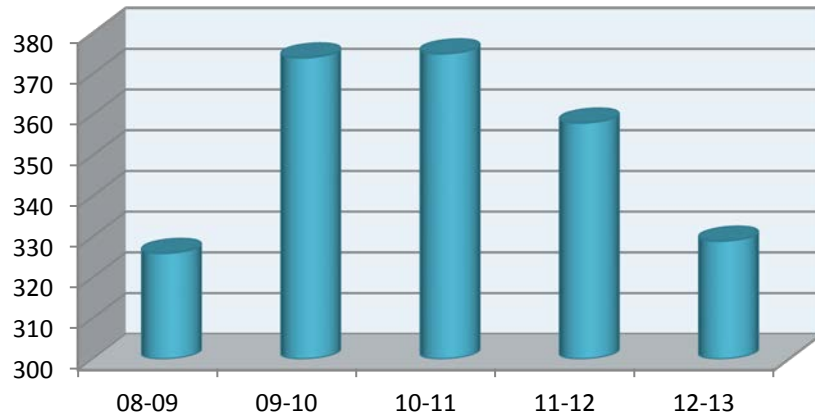
### Madison

08-09	1073
09-10	928
10-11	810
11-12	725
12-13	649



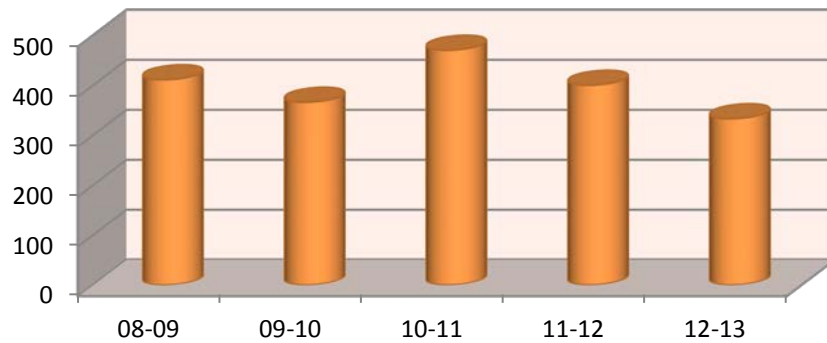
### Suwannee

08-09	326
09-10	374
10-11	375
11-12	358
12-13	329



### Taylor

08-09	412
09-10	367
10-11	471
11-12	401
12-13	334

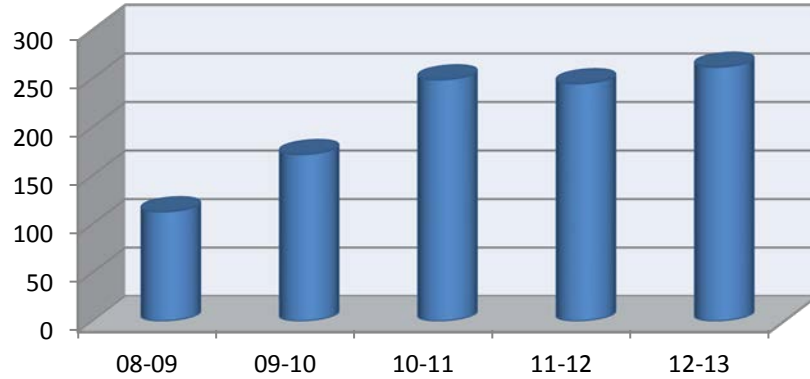


# Enrollment

## 5 Year County Enrollment (2008-2013)

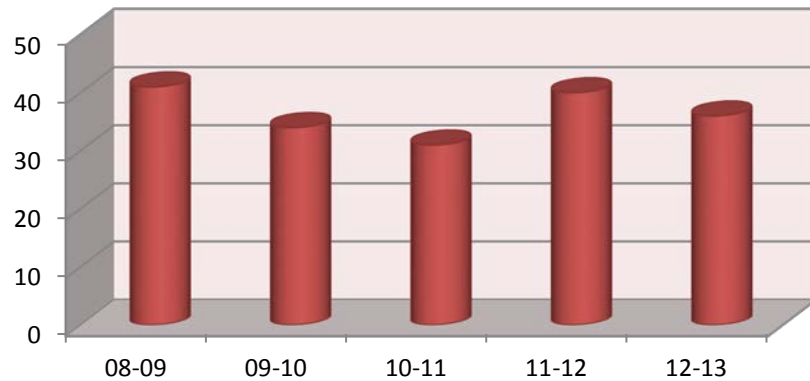
### Other Florida

<b>08-09</b>	113
<b>09-10</b>	172
<b>10-11</b>	249
<b>11-12</b>	245
<b>12-13</b>	262



### Out of State

<b>08-09</b>	41
<b>09-10</b>	34
<b>10-11</b>	31
<b>11-12</b>	40
<b>12-13</b>	36



## District High School Graduates Enrolled (2007-2012)

	2007-08	2008-09	2009-10	2010-11	2011-12
<b>District Grads Enrolled in NFCC</b>	25.3%	25.2%	25.7%	26.0%	26.0%
<b>FL Grads in their District CC</b>	33.2%	34.6%	34.6%	33.0%	33.5%

# Enrollment

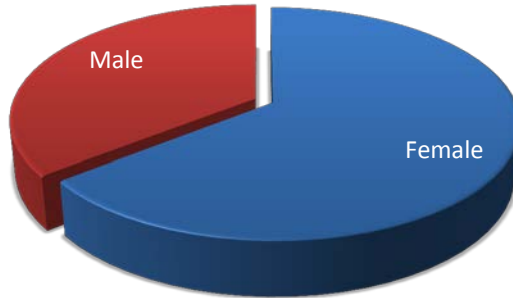
---

## Enrollment by Gender (2012-2013)

---

### Fall 2012

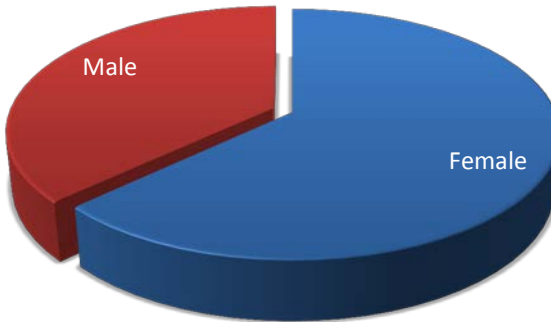
Female	928	65%
Male	502	35%



---

### Spring 2013

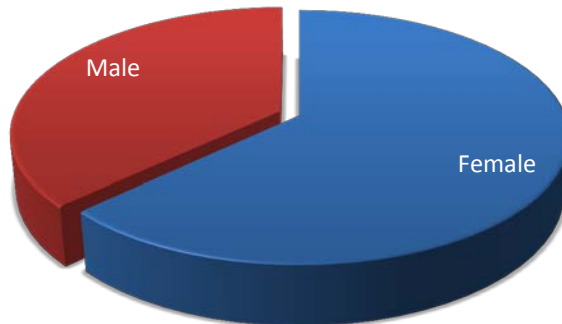
Female	854	63%
Male	505	37%



---

### Summer 2013

Female	396	68%
Male	184	32%



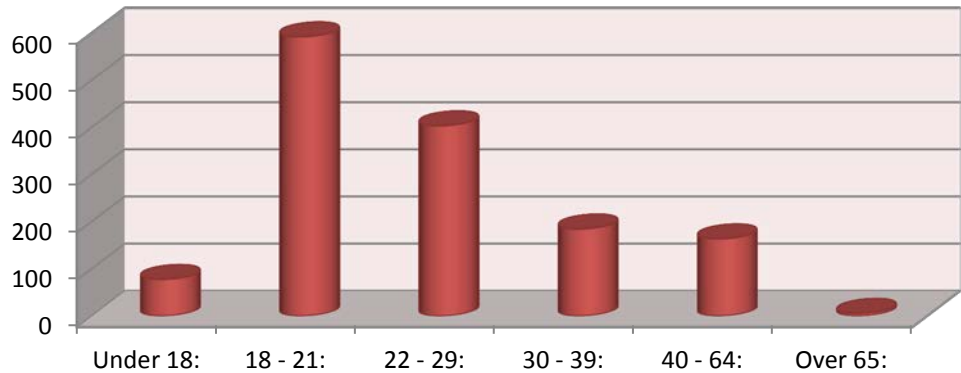
# Enrollment

---

## Enrollment by Age (2012-2013)

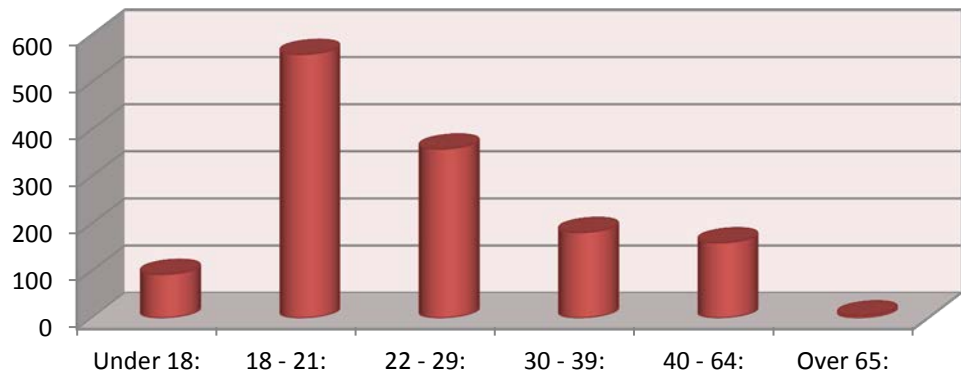
### Fall 2012

Under 18:	78
18 - 21:	593
22 - 29:	404
30 - 39:	185
40 - 64:	164
Over 65:	6
<b>Total:</b>	<b>1430</b>
<b>Average Age:</b>	<b>26</b>



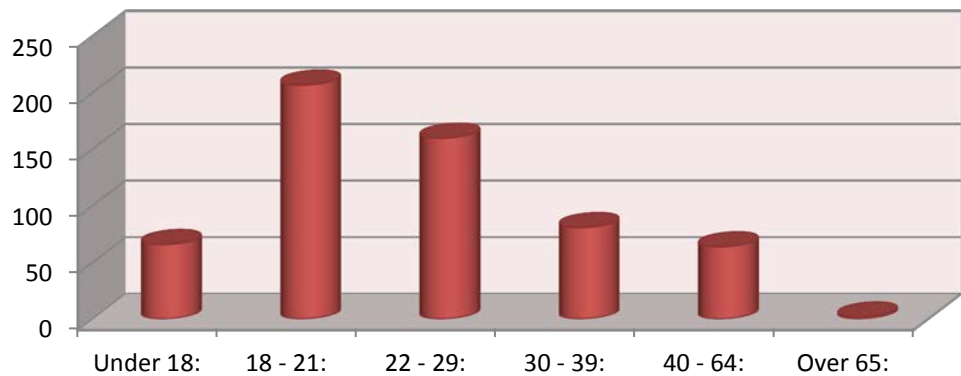
### Spring 2013

Under 18:	93
18 - 21:	560
22 - 29:	359
30 - 39:	182
40 - 64:	160
Over 65:	5
<b>Total:</b>	<b>1359</b>
<b>Average Age:</b>	<b>26</b>



### Summer 2013

Under 18:	66
18 - 21:	207
22 - 29:	160
30 - 39:	81
40 - 64:	64
Over 65:	2
<b>Total:</b>	<b>580</b>
<b>Average Age:</b>	<b>26</b>



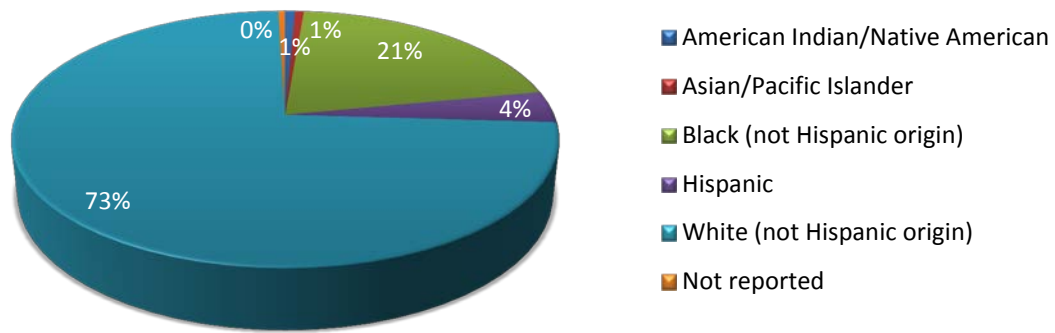


# Enrollment

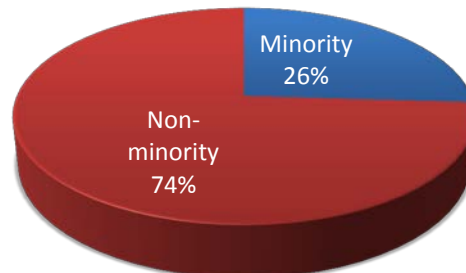
## Enrollment by Ethnicity (2012-2013)

FALL 2012

	#	%
American Indian/Native American	10	1%
Asian/Pacific Islander	9	1%
Black (not Hispanic origin)	295	21%
Hispanic	57	4%
White (not Hispanic origin)	1052	74%
Not reported	7	0%
<b>Total</b>	<b>1430</b>	



	#
Minority	371
Non-minority	1052

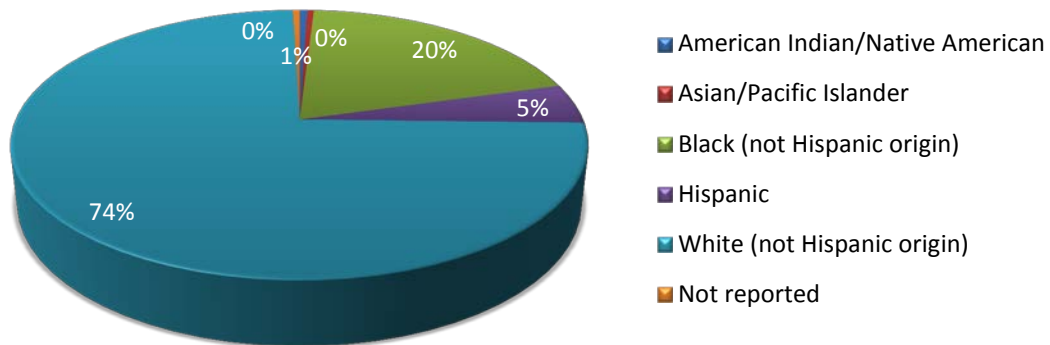


# Enrollment

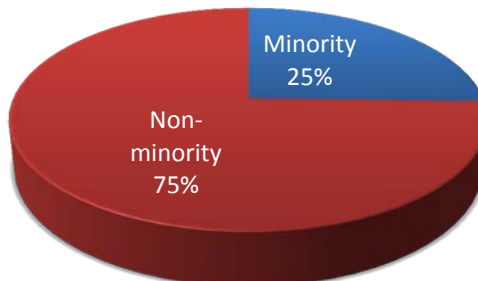
## Enrollment by Ethnicity (2012-2013)

SPRING 2013

	#	%
American Indian/Native American	7	1%
Asian/Pacific Islander	6	0%
Black (not Hispanic origin)	267	20%
Hispanic	65	5%
White (not Hispanic origin)	1008	74%
Not reported	6	0%
<b>Total</b>	<b>1359</b>	



	#
<b>Minority</b>	<b>345</b>
<b>Non-minority</b>	<b>1008</b>

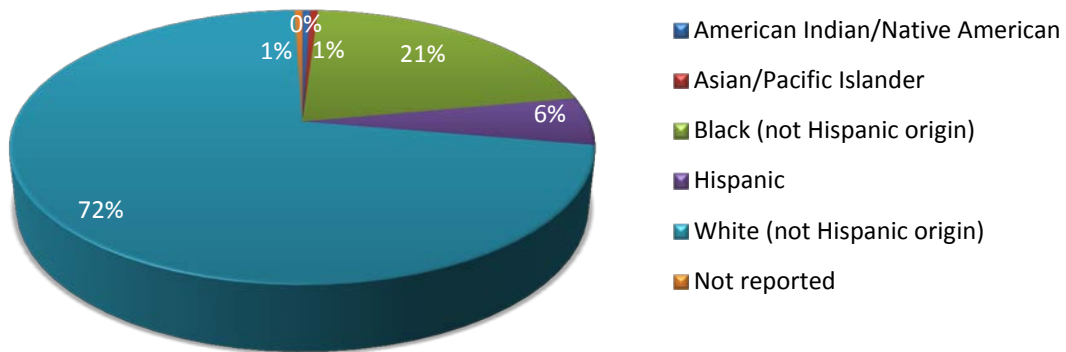


# Enrollment

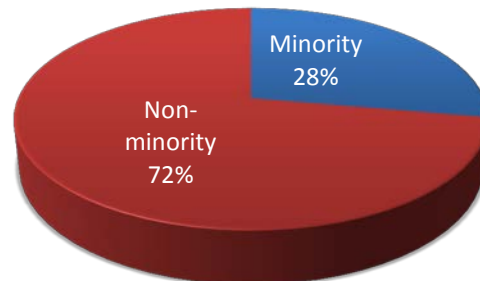
## Enrollment by Ethnicity (2012-2013)

SUMMER 2013

	#	%
American Indian/Native American	3	0.5%
Asian/Pacific Islander	3	1%
Black (not Hispanic origin)	122	21%
Hispanic	33	6%
White (not Hispanic origin)	416	72%
Not reported	3	1%
<b>Total</b>	<b>580</b>	



	#
Minority	161
Non-minority	416



## Enrollment

---

### Student Schedule by Day & Time (2012-2013)

#### Fall 2012

	Monday	Tuesday	Wednesday	Thursday	Friday	Saturday
8:00 - 9:15 a.m.	436	397	425	365	214	39
9:30 - 10:45 a.m.	296	263	328	263	64	0
11:00 - 12:15 p.m.	222	123	200	103	33	0
12:30 - 1:45 p.m.	197	189	232	142	53	31
2:00 - 4:00 p.m.	174	167	174	152	24	0
5:00 p.m. or later	154	168	137	133	0	0

#### Spring 2013

	Monday	Tuesday	Wednesday	Thursday	Friday	Saturday
8:00 - 9:15 a.m.	292	387	264	343	41	52
9:30 - 10:45 a.m.	255	257	270	257	78	0
11:00 - 12:15 p.m.	185	164	165	165	45	0
12:30 - 1:45 p.m.	98	186	128	311	23	34
2:00 - 4:00 p.m.	191	173	191	201	25	0
5:00 p.m. or later	170	162	127	163	0	0

### Instructor to Student Ratio (2008-2013)

	Students	Courses	Instructors	Ratio
08-09	2343	721	104	23
09-10	2317	634	105	22
10-11	2423	687	110	22
11-12	2189	620	102	21
12-13	2016	593	85	24

### Average Class Size (2012-2013)

	Credit	PSAV	College Prep
Fall	21	16	19
Spring	21	19	24
Summer	16	19	13



# STUDENT SUCCESS



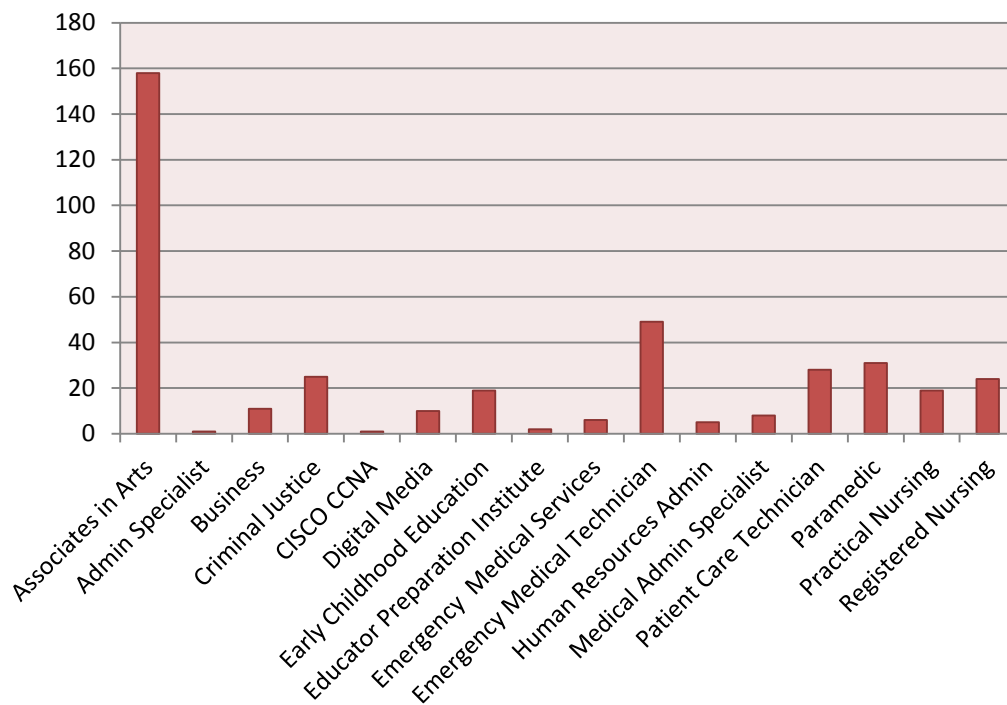
## Section 2: Student Success

### Degrees Awarded (2007–2012)

	08-09	09-10	10-11	11-12	12-13
<b>Associates in Arts</b>	159	137	166	142	158
<b>Associates in Science</b>	19	22	29	28	36
<b>Associates in Applied Science</b>	5	4	5	3	0
<b>ATD</b>	21	50	68	59	49
<b>College Credit Certificates</b>	0	31	20	6	56
<b>Certificates</b>	105	140	125	110	96
<b>Educator Preparation</b>	15	14	11	7	2
<b>Total</b>	324	398	424	355	397

### Graduates by Program (2012-2013)

Associates in Arts	158	Emergency Medical Technician	49
Administrative Specialist	1	Human Resources Admin	5
Business	11	Medical Admin Specialist	8
Criminal Justice	25	Patient Care Technician	28
Digital Media	10	Paramedic	31
Early Childhood Education	19	Practical Nursing	19
Educator Preparation Institute	2	Registered Nursing	24
Emergency Medical Services	6		



## Student Success

---

### First Time in College Retention & Success (2009 – 2013)

	Cohort	%Graduated	Retention Rate	Success Rate
<b>2013</b>	141	51.77%	62.41%	81.55%
<b>2012*</b>	125	47.20%	61.60%	76.80%
<b>2011*</b>	149	40.90%	56.38%	82.55%
<b>2010*</b>	152	43.42%	57.24%	83.55%
<b>2009*</b>	158	48.73%	62.66%	79.75%

\*2012 tracking period Fall 2009 through 2013

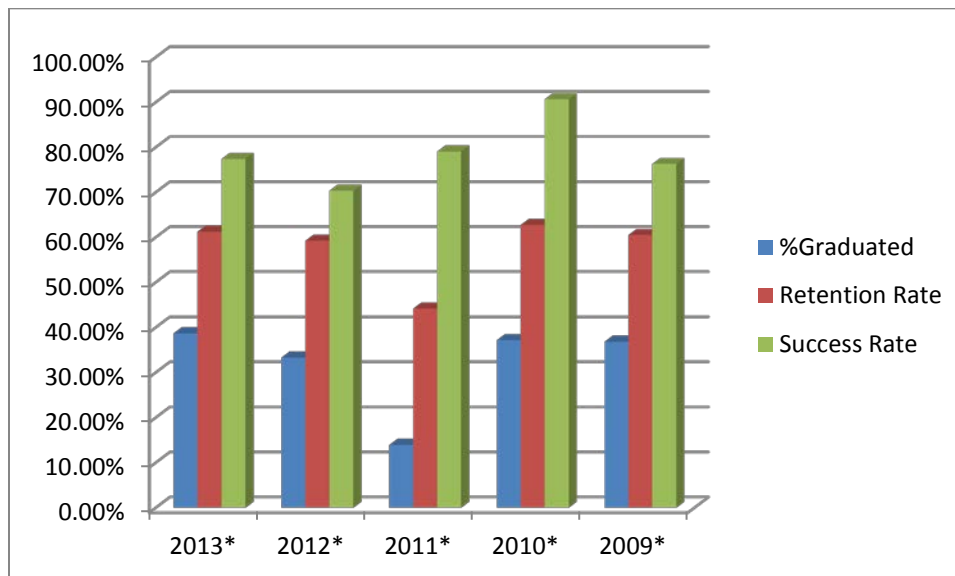
2012 tracking period Fall 2008 through 2012

2011 tracking period Fall 2007 through 2011

2010 tracking period Fall 2006 through 2010

2009 tracking period Fall 2005 through 2009

#### Accountability Outcome Measure 1 Part 2



## Student Success

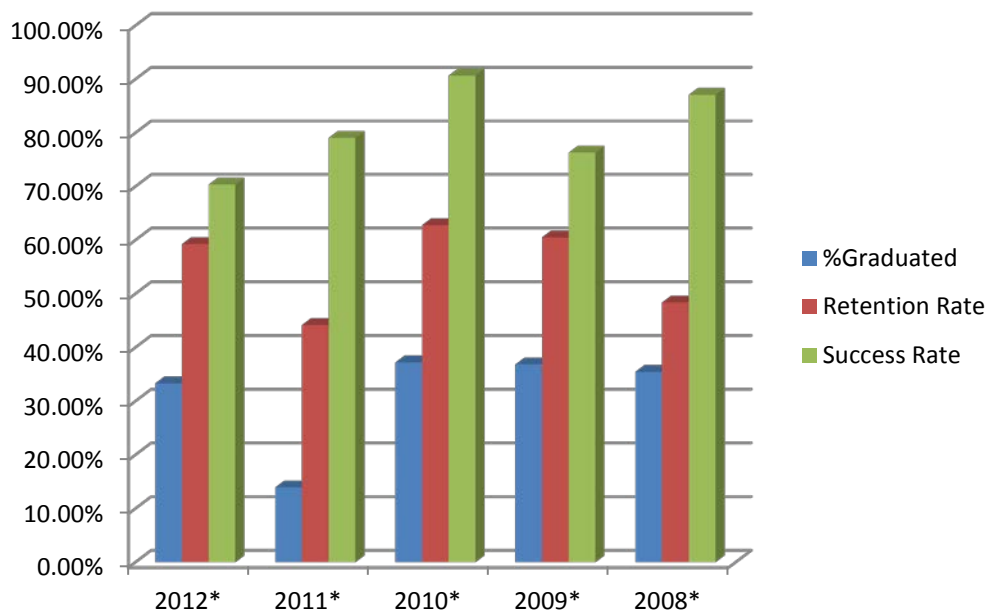
---

### College Preparatory Retention & Success (2009 – 2013)

	Cohort	%Graduated	Retention Rate	Success Rate
<b>2013*</b>	31	38.71%	61.29%	77.42%
<b>2012*</b>	27	33.33%	59.26%	70.37%
<b>2011*</b>	43	13.95%	44.19%	79.07%
<b>2010*</b>	43	37.21%	62.79%	90.70%
<b>2009*</b>	38	36.84%	60.53%	76.32%

\*2012 tracking period Fall 2009 through 2013  
 2012 tracking period Fall 2008 through 2012  
 2011 tracking period Fall 2007 through 2011  
 2010 tracking period Fall 2006 through 2010  
 2009 tracking period Fall 2005 through 2009

Accountability Outcome Measure 4 Part 2



## Student Success

### Vocational Placement (2008– 2011)

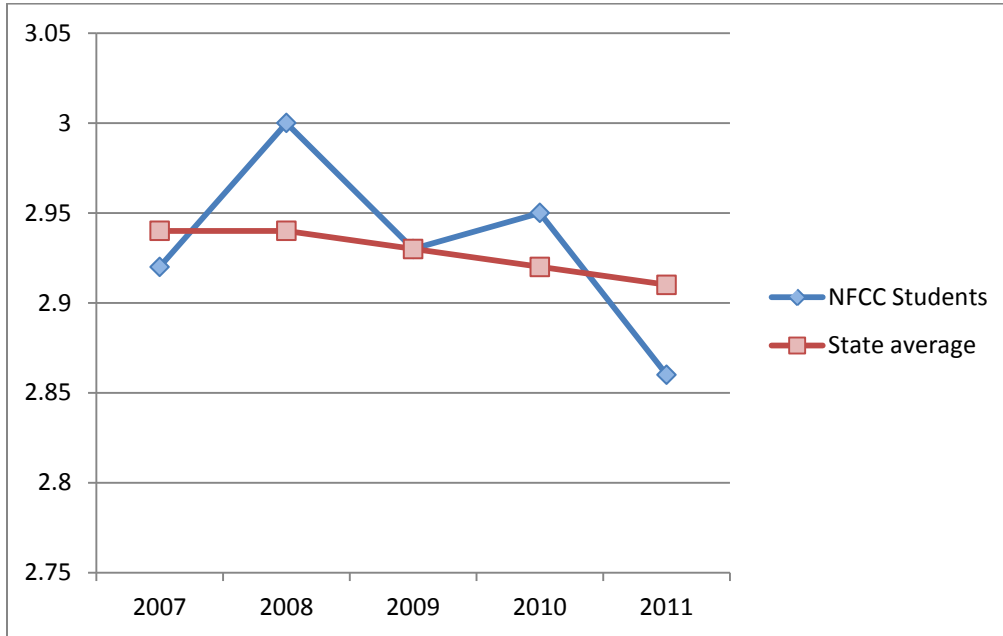
	2009-2010			2008-2009		
	Pool	Placed	%Placed	Pool	Placed	%Placed
<b>Administrative Assistant</b>	4	4	100%	2	2	100.00%
<b>Architectural Drafting</b>	-	-		4	4	100.00%
<b>Correctional Officer</b>	8	8	100%	18	17	94.44%
<b>Criminal Justice Technology</b>	2	2	100%	2	2	100.00%
<b>Early Childhood Education</b>	7	7	100%	3	2	66.67%
<b>Emergency Medical Technician</b>	13	13	100%	32	22	68.75%
<b>Emergency Medical Services AS Degree</b>	2	2	100%	3	3	100.00%
<b>Law Enforcement Officer</b>	6	6	100%	17	16	94.12%
<b>Mechanical Drafting</b>	-	-		4	2	50.00%
<b>Nursing</b>	1	1	100%	17	17	100.00%
<b>Office Management</b>	-	-		1	1	100.00%
<b>Paramedic</b>	5	5	100%	9	7	77.78%
<b>Patient Care Technician</b>	19	19	100%	32	30	93.75%
<b>Practical Nursing</b>	6	6	100%	18	18	100.00%
<b>X Corrections Officer to Law Enforcement Officer</b>	6	6	100%	-	-	-
<b>Administrative Assistant</b>	4	4	100%	2	2	100.00%

Accountability Outcome Measure 3 Part 2

## Student Success

### NFCC Transfer Success (2007-2011)

Mean cumulative grade-point averages for NFCC graduates who transfer to Florida public universities



	2007	2008	2009	2010	2011
<b>NFCC Students</b>	2.92	3.00	2.93	2.95	2.86
<b>State average</b>	2.94	2.94	2.93	2.92	2.91

Articulation Report Table 12

### Top Universities receiving NFCC Graduates

University	Avg. GPA
FSU – Tallahassee	2.87
FAMU – Tallahassee	2.68
UF – Gainesville	3.10
UCF – Orlando	2.69
UNF – Jacksonville	2.64
USF – Miami	2.96

Articulation Report Table 12

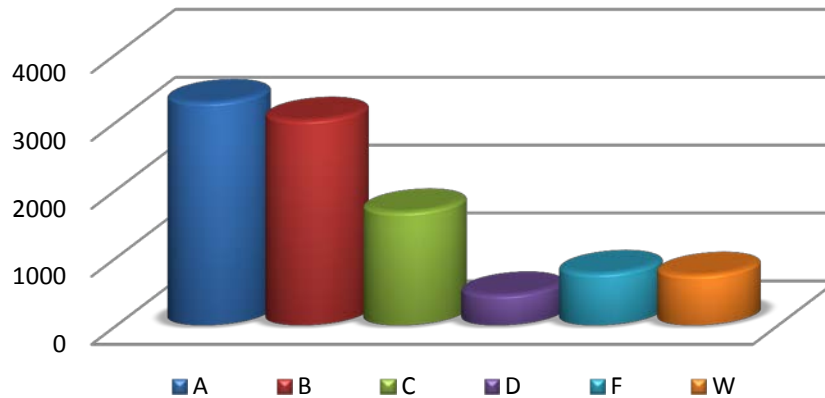


## Student Success

---

### Grade Distribution in all NFCC Courses (2012-2013)

A	B	C	D	F	W	Total
2909	2944	1525	315	723	524	8940



### Grade Distribution in NFCC College Credit Courses (2012-2013)

A	B	C	D	F	W	Total
2356	2334	1300	301	592	429	7312

### Grade Distribution in NFCC College Prep Courses (2012-2013)

A	B	C	D	F	W	Total
44	178	133	14	82	62	513

### Grade Distribution in NFCC PSAV Courses (2012-2013)

A	B	C	D	F	W	Total
509	432	91	0	47	34	1113

### Grade Distribution in NFCC Online Courses (2012-2013)

A	B	C	D	F	W	Total
564	575	356	112	214	158	1979



# DISTANCE LEARNING

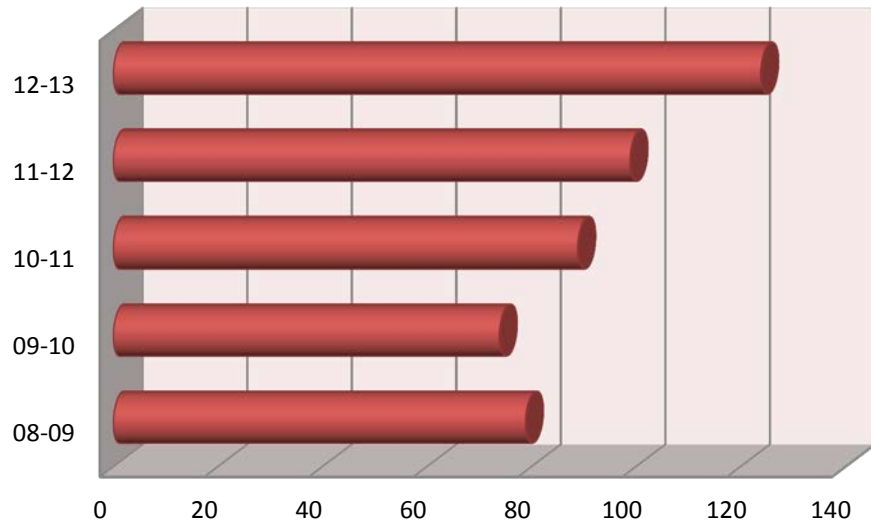


# Section 3: Distance Learning

---

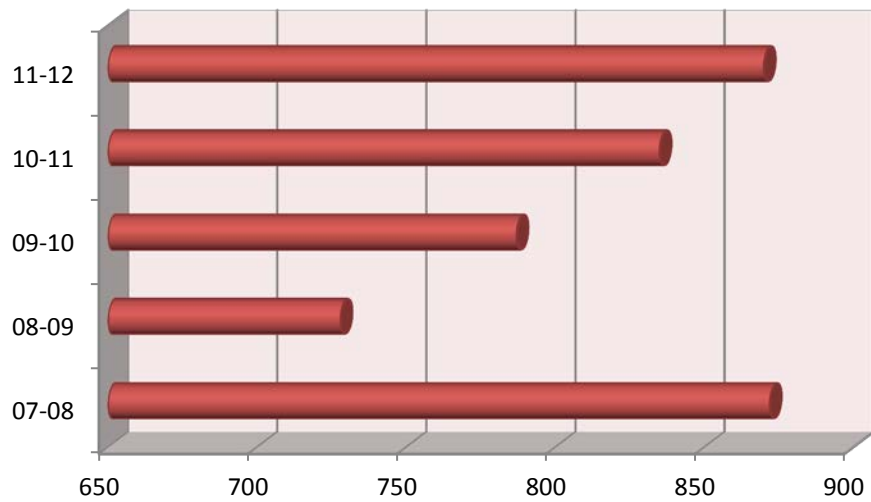
### Number of Online Courses (2008-2013)

Year	# of courses
08-09	79
09-10	74
10-11	89
11-12	99
12-13	124



### Number of Online Students (2008-2013)

Year	# of students
08-09	728
09-10	787
10-11	835
11-12	870
12-13	905

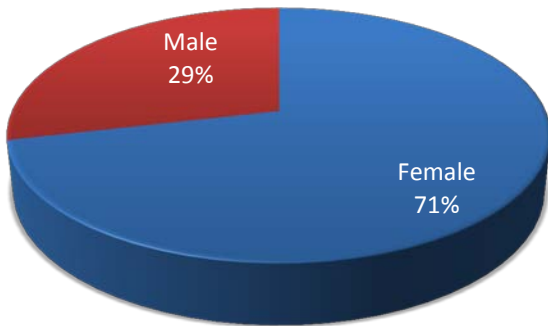


# Distance Learning

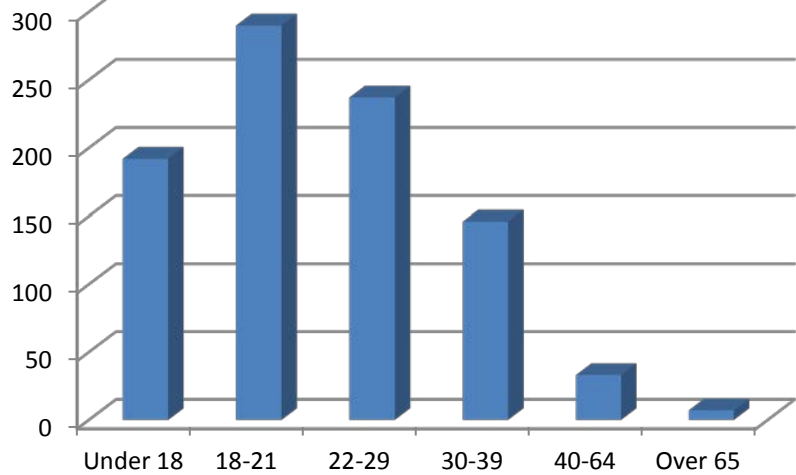
## Online Student Demographics (2012-2013)

### Gender

<b>Female</b>	646
<b>Male</b>	259



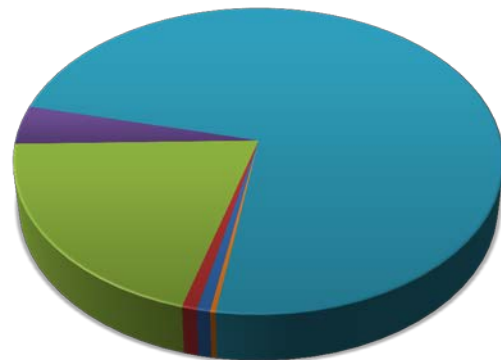
### Age



Under 18	18-21	22-29	30-39	40-64	Over 65
192	290	237	146	33	7

### Ethnicity

<b>American India/Alaskan Native:</b>	7
<b>Asian:</b>	8
<b>Black:</b>	183
<b>Hispanic:</b>	37
<b>White:</b>	667
<b>Not Reported:</b>	3



American India/Alaskan Native	Asian
Black	Hispanic
White	Not Reported





# DUAL ENROLLMENT

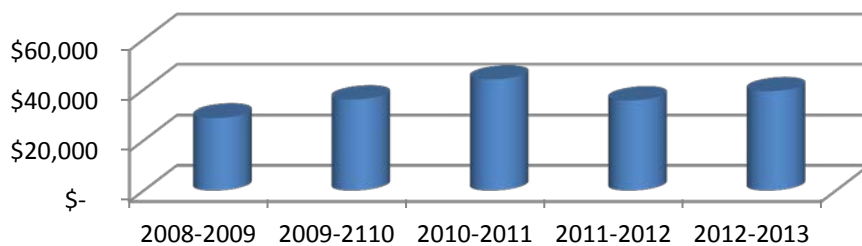


# Section 4: Dual Enrollment

## Number and cost of Dual Enrolled Student (2008-2013)

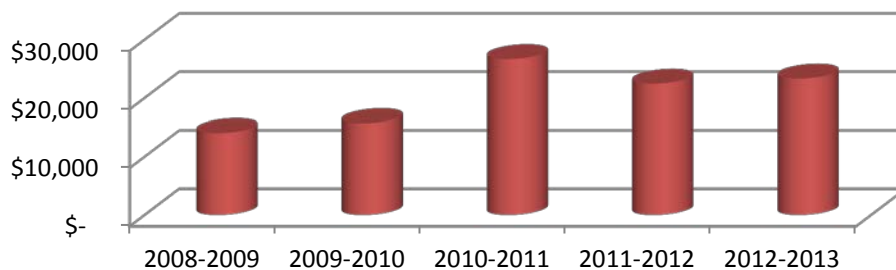
### Hamilton

	# of Students	Credit hours	County Value	Total NFCC DE Value	% Total DE Value
<b>2008-2009</b>	29	395	\$ 28,835	\$ 230,899	12%
<b>2009-2110</b>	44	438	\$ 36,004	\$ 222,105	16%
<b>2010-2011</b>	37	500	\$ 44,000	\$ 300,754	15%
<b>2011-2012</b>	30	381	\$ 35,624	\$ 299,668	12%
<b>2012-2013</b>	42	386	\$ 39,295	\$ 341,946	11%
<b>5 Yr. Total</b>	182	2100	\$ 183,758	\$ 1,395,372	



### Jefferson

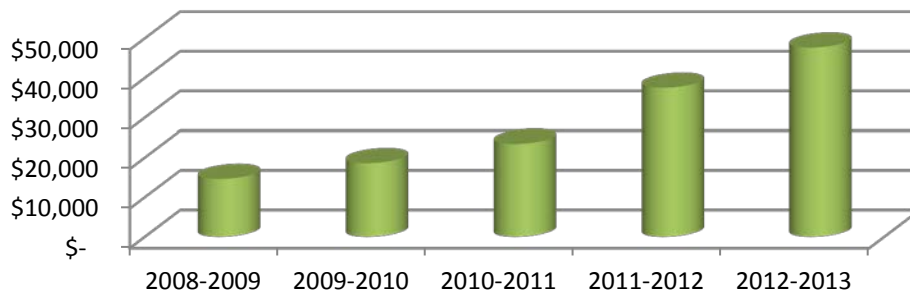
	# of Students	Credit hours	County Value	Total NFCC DE Value	% Total DE Value
<b>2008-2009</b>	16	192	\$ 14,016	\$ 230,899	6%
<b>2009-2010</b>	20	191	\$ 15,700	\$ 222,105	7%
<b>2010-2011</b>	40	303	\$ 26,664	\$ 300,754	9%
<b>2011-2012</b>	22	240	\$ 22,440	\$ 299,668	7%
<b>2012-2013</b>	21	229	\$ 23,312	\$ 341,946	7%
<b>5 Yr. Total</b>	119	1155	\$ 102,132	\$ 1,395,372	



## Dual Enrollment

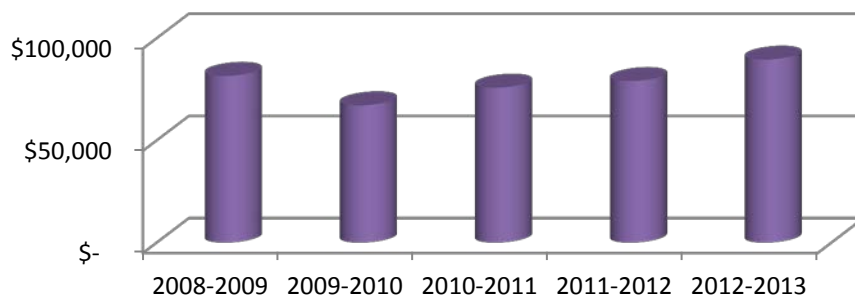
### Lafayette

	# of Students	Credit hours	County Value	Total NFCC DE Value	% Total DE Value
<b>2008-2009</b>	19	200	\$ 14,600	\$ 230,899	6%
<b>2009-2010</b>	27	226	\$ 18,577	\$ 222,105	8%
<b>2010-2011</b>	33	266	\$ 23,408	\$ 300,754	8%
<b>2011-2012</b>	40	401	\$ 37,494	\$ 299,668	13%
<b>2012-2013</b>	46	468	\$ 47,642	\$ 341,946	14%
<b>5 Yr. Total</b>	165	1561	\$ 141,721	\$ 1,395,372	



### Madison

	# of Students	Credit hours	County Value	Total NFCC DE Value	% Total DE Value
<b>2008-2009</b>	85	1117	\$ 81,541	\$ 230,899	35%
<b>2009-2010</b>	73	817	\$ 67,157	\$ 222,105	30%
<b>2010-2011</b>	65	861	\$ 75,768	\$ 300,754	25%
<b>2011-2012</b>	67	845	\$ 79,008	\$ 299,668	26%
<b>2012-2013</b>	79	879	\$ 89,482	\$ 341,946	26%
<b>5 Yr. Total</b>	369	4519	\$ 392,956	\$ 1,395,372	

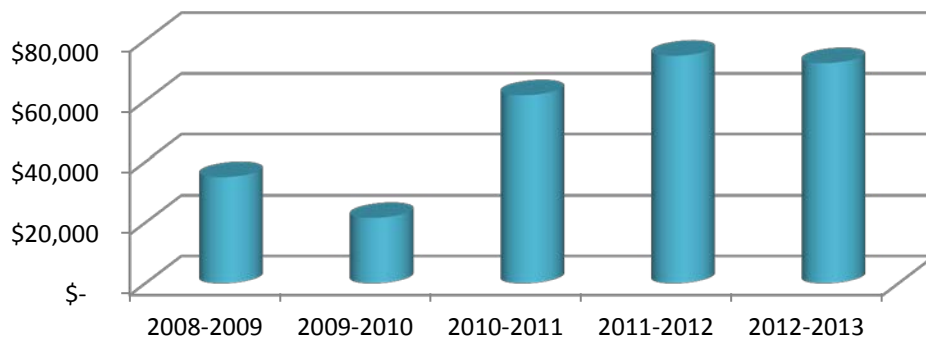




## Dual Enrollment

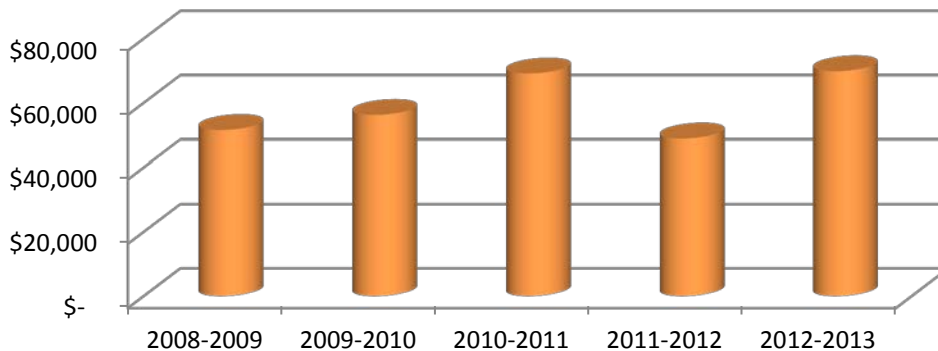
### Suwannee

	# of Students	Credit hours	County Value	Total NFCC DE Value	% Total DE Value
<b>2008-2009</b>	44	479	\$ 34,967	\$ 230,899	15%
<b>2009-2010</b>	32	262	\$ 21,536	\$ 222,105	10%
<b>2010-2011</b>	64	702	\$ 61,776	\$ 300,754	21%
<b>2011-2012</b>	78	800	\$ 74,800	\$ 299,668	25%
<b>2012-2013</b>	68	711	\$ 72,380	\$ 341,946	21%
<b>5 Yr. Total</b>	286	2954	\$ 265,459	\$ 1,395,372	



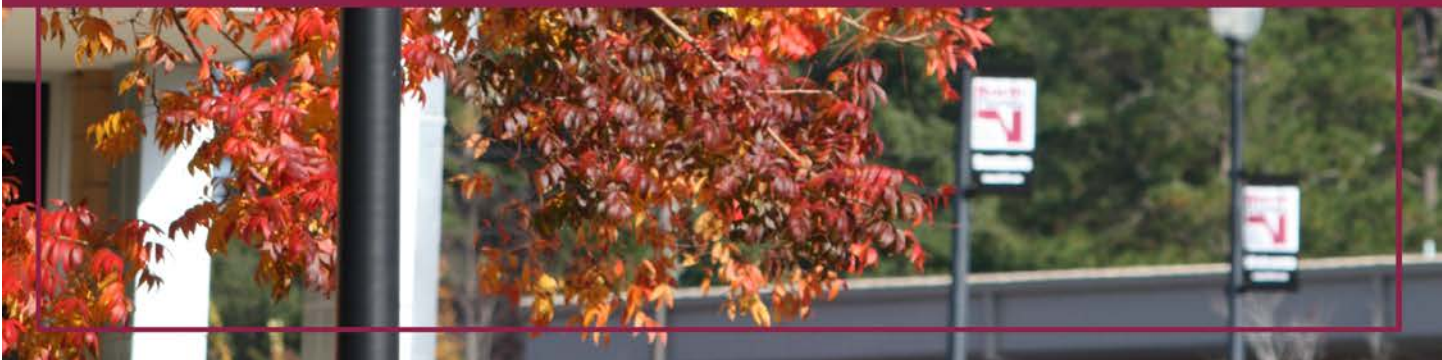
### Taylor

	# of Students	Credit hours	County Value	Total NFCC DE Value	% Total DE Value
<b>2008-2009</b>	56	706	\$ 51,538	\$ 230,899	22%
<b>2009-2010</b>	69	684	\$ 56,225	\$ 222,105	25%
<b>2010-2011</b>	67	786	\$ 69,138	\$ 300,754	23%
<b>2011-2012</b>	46	523	\$ 48,901	\$ 299,668	16%
<b>2012-2013</b>	53	686	\$ 69,835	\$ 341,946	20%
<b>5 Yr. Total</b>	291	3385	\$ 295,637	\$ 1,395,372	





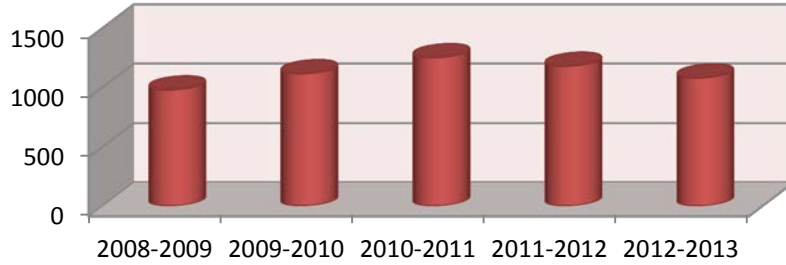
# FINANCIAL AID



# Section 5: Financial Aid

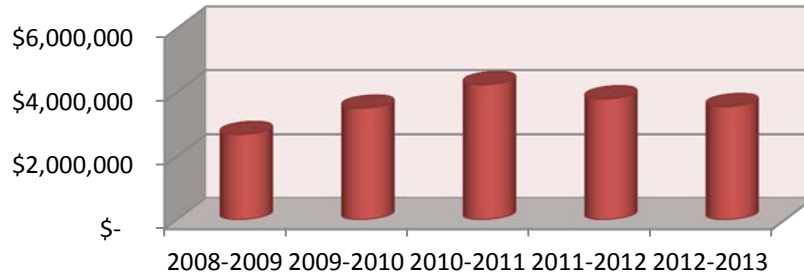
## Number of Financial Aid Awards (2008-2013)

<b>2008-2009</b>	980
<b>2009-2010</b>	1117
<b>2010-2011</b>	1253
<b>2011-2012</b>	1181
<b>2012-2013</b>	1081



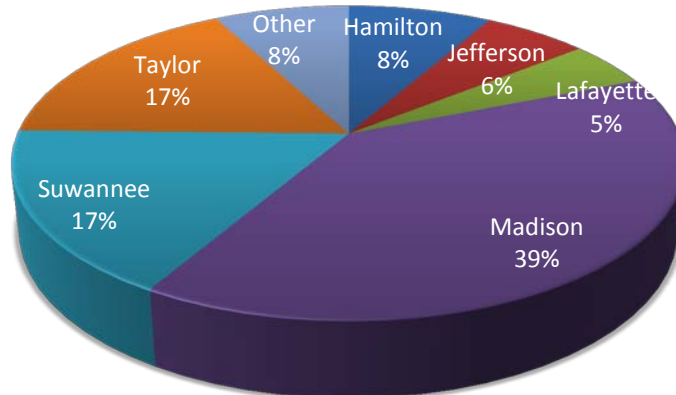
## Dollar Amount of Financial Aid Awards (2008-2013)

<b>2008-2009</b>	\$ 2,691,770
<b>2009-2010</b>	\$ 3,501,192
<b>2010-2011</b>	\$ 4,243,146
<b>2011-2012</b>	\$ 3,794,543
<b>2012-2013</b>	\$ 3,549,951



## Distribution by County (2012-2013)

<b>Hamilton</b>	\$ 292,243
<b>Jefferson</b>	\$ 212,836
<b>Lafayette</b>	\$ 167,442
<b>Madison</b>	\$ 1,401,654
<b>Suwannee</b>	\$ 600,683
<b>Taylor</b>	\$ 600,042
<b>Other</b>	\$ 275,052



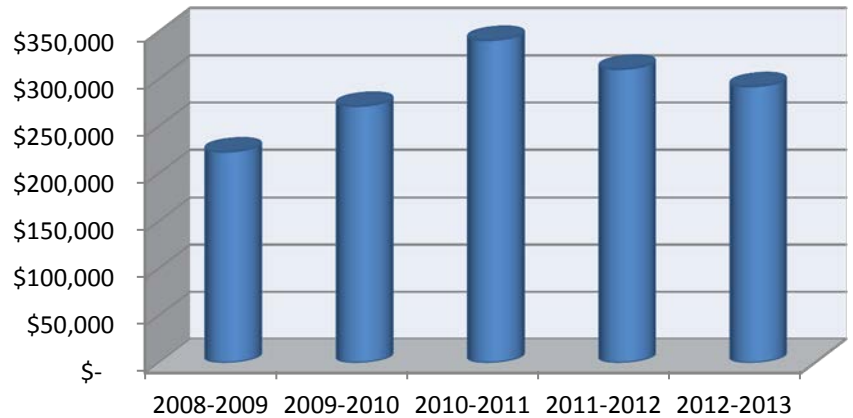


# Financial Aid

## Awards by County (In-District Only) 2012-2013

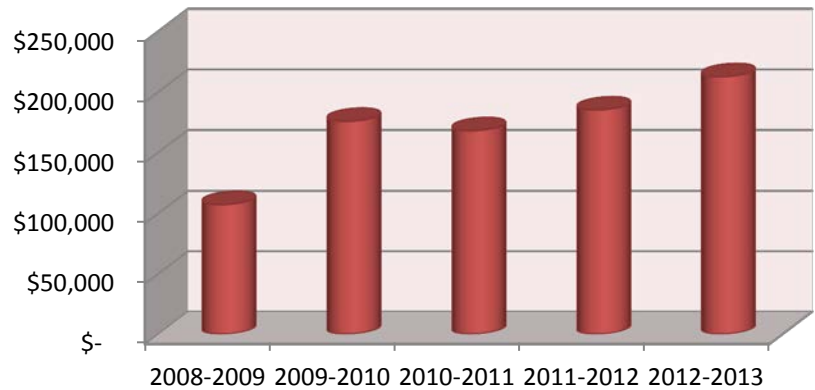
### Hamilton

	# of Students	Awards Paid
<b>2008-2009</b>	77	\$ 223,123
<b>2009-2010</b>	91	\$ 271,452
<b>2010-2011</b>	100	\$ 341,311
<b>2011-2012</b>	92	\$ 310,662
<b>2012-2013</b>	92	\$ 292,243



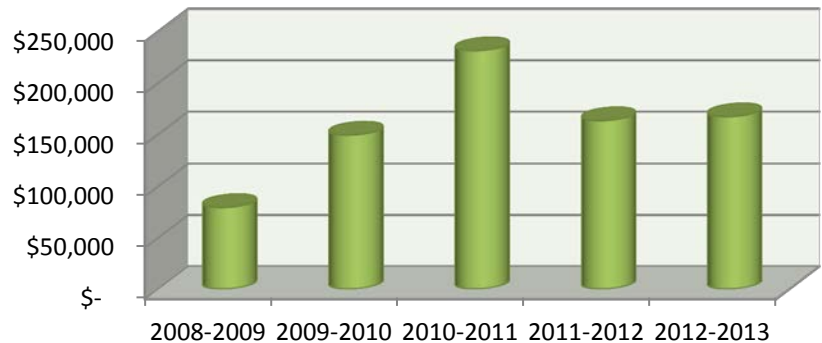
### Jefferson

	# of Students	Awards Paid
<b>2008-2009</b>	49	\$ 107,554
<b>2009-2010</b>	60	\$ 175,920
<b>2010-2011</b>	58	\$ 168,150
<b>2011-2012</b>	66	\$ 185,296
<b>2012-2013</b>	70	\$ 212,836



### Lafayette

	# of Students	Awards Paid
<b>2008-2009</b>	32	\$ 79,692
<b>2009-2010</b>	46	\$ 149,573
<b>2010-2011</b>	68	\$ 231,694
<b>2011-2012</b>	51	\$ 163,660
<b>2012-2013</b>	46	\$ 167,442

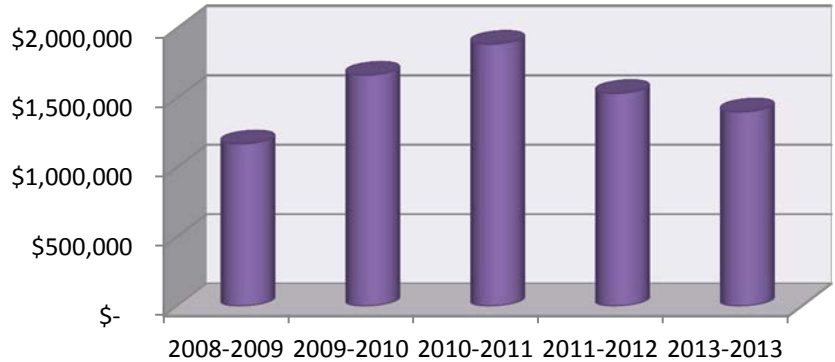


# Financial Aid

## Awards by County

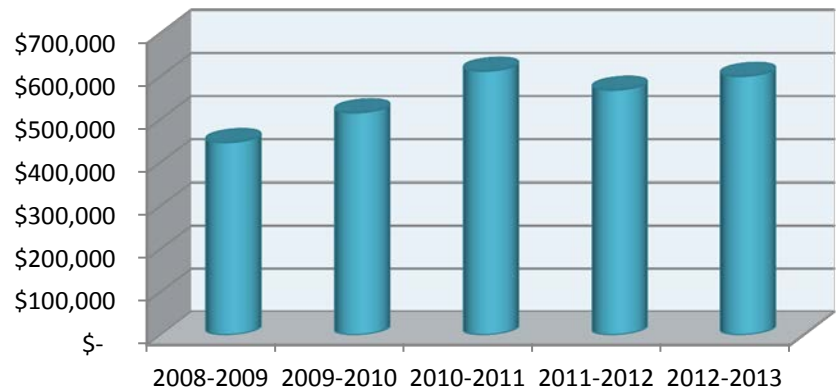
### Madison

	# of Students	Awards Paid
<b>2008-2009</b>	428	\$ 1,171,335
<b>2009-2010</b>	516	\$ 1,666,185
<b>2010-2011</b>	539	\$ 1,889,842
<b>2011-2012</b>	501	\$ 1,534,922
<b>2013-2013</b>	427	\$ 1,401,654



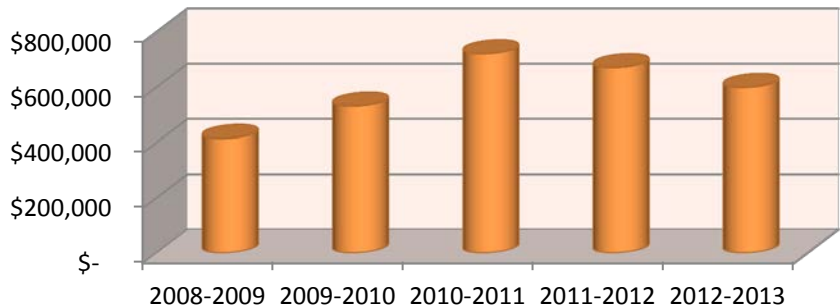
### Suwannee

	# of Students	Awards Paid
<b>2008-2009</b>	154	\$ 446,688
<b>2009-2010</b>	164	\$ 515,958
<b>2010-2011</b>	177	\$ 612,692
<b>2011-2012</b>	164	\$ 568,508
<b>2012-2013</b>	174	\$ 600,683



### Taylor

	# of Students	Awards Paid
<b>2008-2009</b>	166	\$ 415,456
<b>2009-2010</b>	169	\$ 532,456
<b>2010-2011</b>	216	\$ 722,461
<b>2011-2012</b>	208	\$ 672,185
<b>2012-2013</b>	191	\$ 600,042





# LIBRARY

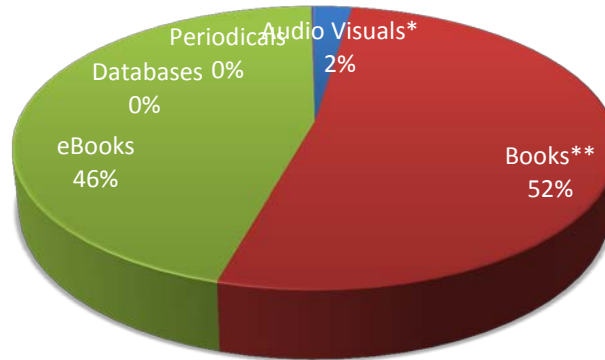


# Section 6: NFCC Library

---

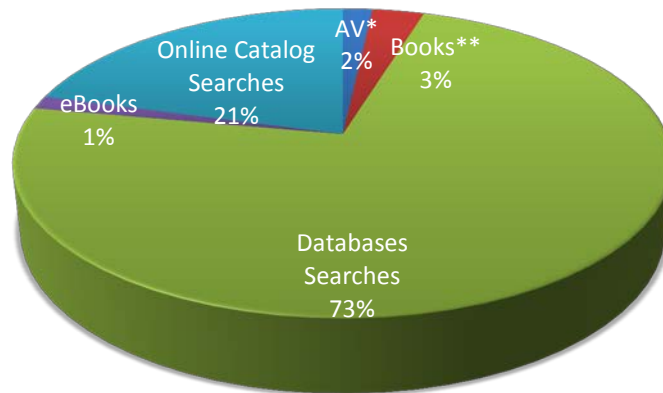
## 2012-2013 Collections

<b>Audio Visuals*</b>	1,575
<b>Books**</b>	34,496
<b>eBooks</b>	30,119
<b>Electronic Databases</b>	119
<b>Periodicals</b>	35



## 2012-2013 Circulation Statistics

<b>Audio Visuals*</b>	2,170
<b>Books**</b>	3,802
<b>Databases Searches</b>	91,446
<b>eBooks</b>	1,715
<b>Online Catalog Searches</b>	25,955
<b>Periodicals</b>	2,170



\*Audio visuals include audiocassettes, DVDs, CDs, and videotapes

\*\*Books includes titles from circulation and reference collections





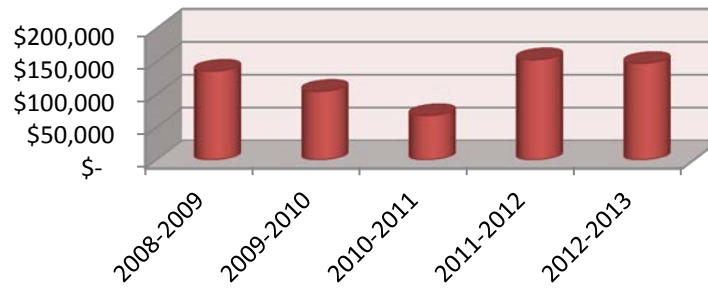
# FOUNDATION



# Section 7: NFCC Foundation

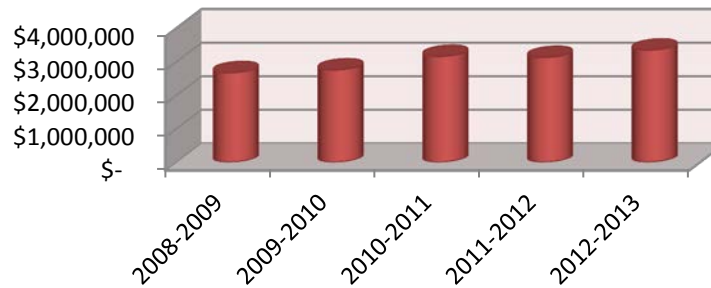
## Scholarships Awarded (2008-2013)

2008-2009	2009-2010	2010-2011	2011-2012	2012-2013
\$ 135,448	\$ 104,843	\$ 67,830	\$ 153,013	\$ 147,419



## Foundation Assets (2008-2013)

2008-2009	2009-2010	2010-2011	2011-2012	2012-2013
\$ 2,679,205	\$ 2,760,800	\$ 3,164,631	\$ 3,132,899	\$ 3,353,846







# PERSONNEL

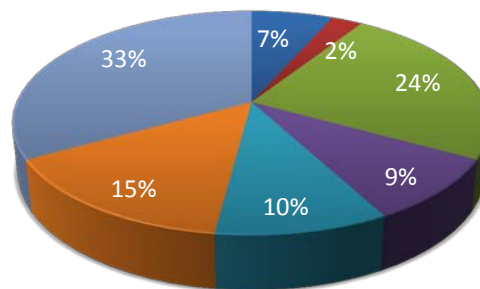


# Section 8: Personnel

## Full & Part-Time Instructional Staff (2012-2013)

### By Degree

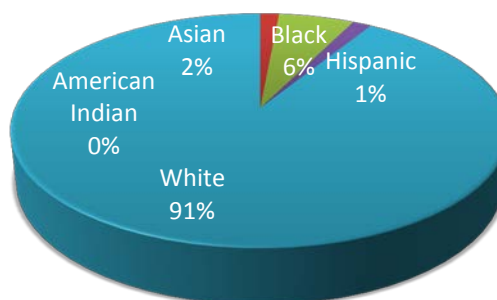
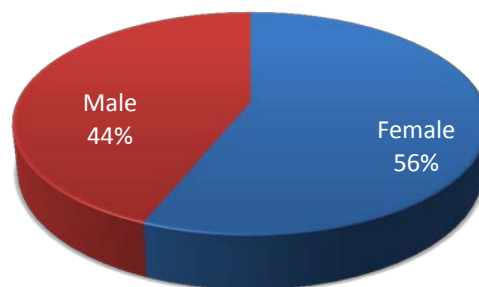
Doctorate	8
Advanced Specialist	3
Masters	29
Bachelors	11
Associates	12
Other	18
Unknown	40



- Doctorate
- Advanced Specialist
- Masters
- Bachelors
- Associates
- Other
- Unknown

### By Gender & Ethnicity

	Female	Male
American Indian	0	1
Asian	0	1
Black	4	5
Hispanic	1	2
White	63	44





# FINANCES

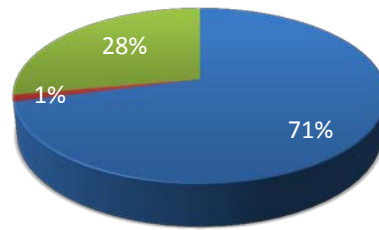




# Section 9: Finances

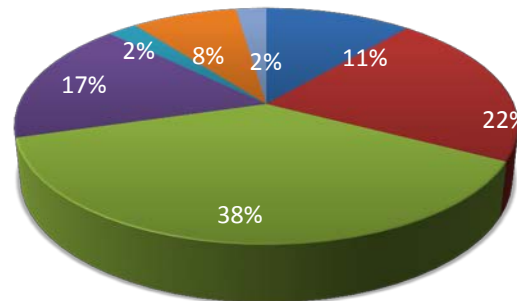
## General Fund Budget (2012-2013)

By Object	
Personnel Costs	\$ 6,704,704
Capital Outlay	\$ 115,356
Current Expenses	\$ 2,637,403
<b>Total</b>	<b>\$ 9,457,463</b>



■ Personnel Costs   ■ Capital Outlay   ■ Current Expenses

By Organizational Unit	
Academic Support - Other	\$ 1,063,169
Institutional Support	\$ 2,025,894
Instruction	\$ 3,576,017
Plant Operations	\$ 1,592,401
Public Services	\$ 214,766
Student Support	\$ 764,735
Transfer Contingencies	\$ 220,481
<b>Total</b>	<b>\$ 9,457,463</b>

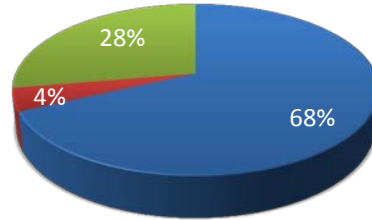


■ Academic Support - Other   ■ Institutional Support  
 ■ Instruction   ■ Plant Operations  
 ■ Public Services   ■ Student Support  
 ■ Transfer Contingencies

# Finances

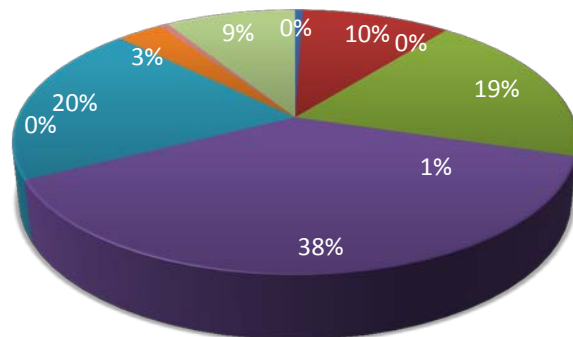
## General Fund Expenditures (2012-2013)

By Object	
<b>Personnel Costs</b>	\$ 5,733,813
<b>Capital Outlay</b>	\$ 363,021
<b>Current Expenses</b>	\$ 2,337,097
<b>Total</b>	\$ 8,433,931



■ Personnel Costs   
 ■ Capital Outlay   
 ■ Current Expenses

By Organizational Unit	
<b>Academic Support - SPD</b>	\$ 42,885
<b>Academic Support - Other</b>	\$ 861,074
<b>Institutional Support</b>	\$ 1,597,249
<b>Instruction</b>	\$ 3,196,376
<b>Plant Operations</b>	\$ 1,668,964
<b>Public Services</b>	\$ 265,299
<b>Research</b>	\$ -
<b>Student Aid</b>	\$ 49,110
<b>Student Support</b>	\$ 750,486
<b>Transfer Contingencies</b>	\$ 2,488
<b>Total</b>	\$ 8,433,931

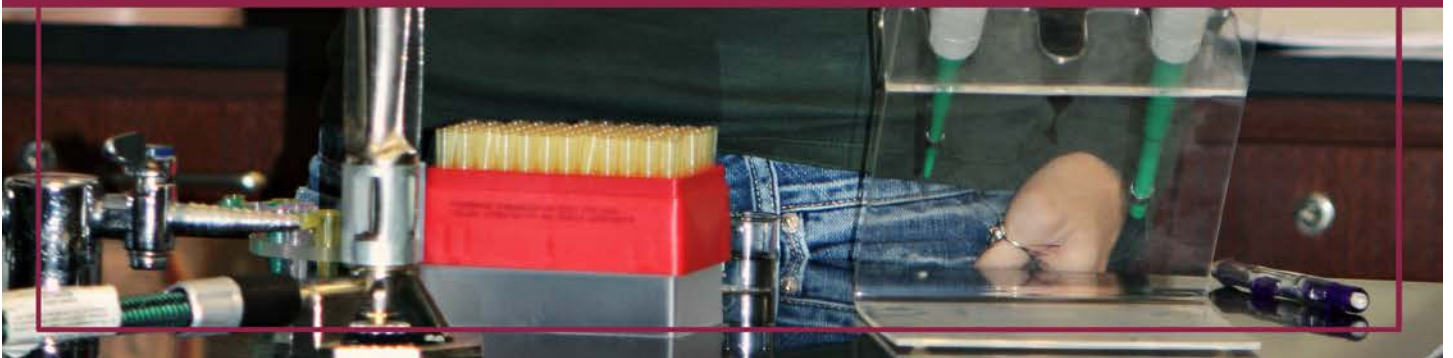


■ Academic Support - SPD   
 ■ Academic Support - Other   
 ■ Institutional Support  
■ Instruction   
 ■ Plant Operations   
 ■ Public Services  
■ Research   
 ■ Student Aid   
 ■ Student Support  
■ Transfer Contingencies





# DISTRICT DATA



# Section 9: District Data

## Hamilton County (2010 Census Data)

	County	FL
Population, 2010	14,799	18,801,310
Persons under 18, 2000 to 2010	21%	21.9%
White, 2010	59.8%	75%
Black, 2010	34.5%	16%
American Indian & Alaska Native, 2010	0.6%	0.4%
Asian, 2010	0.5%	2.4%
Native Hawaiian and Other Pacific Islander, 2010		0.1%
Two more races, 2010	1.7%	2.4%
Hispanic or Latino, 2010	8.8%	22.5%
White not Hispanic, 2010	54.9%	57.9%
High School Graduates, % of persons 25+ 2005-2009	70.7%	84.9%
Bachelor's degree or higher, % of persons 25+ 2005-2009	8.5%	25.6%
Per capita money income in past 12 months, 2005-2009	\$14,716	\$26,503
Person's below poverty level, 2009	28.5%	15.0%
Land area, square miles	514.86	53926.82



## District Data

### Jefferson County (2010 Census Data)

	County	FL
Population, 2010	14,761	18,801,310
Persons under 18, 2000 to 2010	19%	21.9%
White, 2010	60.40%	75%
Black, 2010	36.20%	16%
American Indian & Alaska Native, 2010	0.30%	0.40%
Asian, 2010	0.40%	2.40%
Native Hawaiian and Other Pacific Islander, 2010		0.10%
Two more races, 2010	1.30%	2.40%
Hispanic or Latino, 2010	3.70%	22.50%
White not Hispanic, 2010	87.70%	57.90%
High School Graduates, % of persons 25+ 2005-2009	81.60%	84.90%
Bachelor's degree or higher, % of persons 25+ 2005-2009	17.30%	25.60%
Per capita money income in past 12 months, 2005-2009	\$20,323	\$26,503.00
Person's below poverty level, 2009	19.10%	15%
Land area, square miles	597.74	53926.82



## District Data

---

### Lafayette County (2010 Census Data)

	County	FL
Population, 2010	8,870	18,801,310
Persons under 18, 2000 to 2010	19.7%	21.9%
White, 2010	77.4%	75.0%
Black, 2010	15.9%	16.0%
American Indian & Alaska Native, 2010	0.4%	0.4%
Asian, 2010	0.1%	2.4%
Native Hawaiian and Other Pacific Islander, 2010		0.1%
Two more races, 2010	1.4%	2.4%
Hispanic or Latino, 2010	12.1%	22.5%
White not Hispanic, 2010	70.6%	57.9%
High School Graduates, % of persons 25+ 2005-2009	76.2%	84.9%
Bachelor's degree or higher, % of persons 25+ 2005-2009	6.7%	25.6%
Per capita money income in past 12 months, 2005-2009	\$16,575	\$26,503.00
Person's below poverty level, 2009	34.6%	15.0%
Land area, square miles	542.84	53926.82



## District Data

### Madison County (2010 Census Data)

	County	FL
Population, 2010	19,224	18,801,310
Persons under 18, 2000 to 2010	22.3%	21.9%
White, 2010	57.6%	75%
Black, 2010	38.8%	16%
American Indian & Alaska Native, 2010	0.5%	0.4%
Asian, 2010	0.2%	2.4%
Native Hawaiian and Other Pacific Islander, 2010		0.1%
Two more races, 2010	1.3%	2.4%
Hispanic or Latino, 2010	4.7%	22.5%
White not Hispanic, 2010	55.0%	57.9%
High School Graduates, % of persons 25+ 2005-2009	74.4%	84.9%
Bachelor's degree or higher, % of persons 25+ 2005-2009	11.1%	25.6%
Per capita money income in past 12 months, 2005-2009	\$16,486	\$26,503.00
Person's below poverty level, 2009	26.2%	15.0%
Land area, square miles	691.79	53926.82



## District Data

---

### Suwannee County (2010 Census Data)

	<b>County</b>	<b>FL</b>
<b>Population, 2010</b>	41,551	18,801,310
<b>Persons under 18, 2000 to 2010</b>	22.7%	21.9%
<b>White, 2010</b>	82.5%	75%
<b>Black, 2010</b>	11.4%	16%
<b>American Indian &amp; Alaska Native, 2010</b>	0.5%	0.4%
<b>Asian, 2010</b>	0.5%	2.4%
<b>Native Hawaiian and Other Pacific Islander, 2010</b>		0.1%
<b>Two more races, 2010</b>	1.9%	2.4%
<b>Hispanic or Latino, 2010</b>	8.7%	22.5%
<b>White not Hispanic, 2010</b>	77.7%	57.9%
<b>High School Graduates, % of persons 25+ 2005-2009</b>	77.6%	84.9%
<b>Bachelor's degree or higher, % of persons 25+ 2005-2009</b>	8.8%	25.6%
<b>Per capita money income in past 12 months, 2005-2009</b>	\$17,798	\$26,503.00
<b>Person's below poverty level, 2009</b>	19.7%	15.0%
<b>Land area, square miles</b>	687.64	53926.82

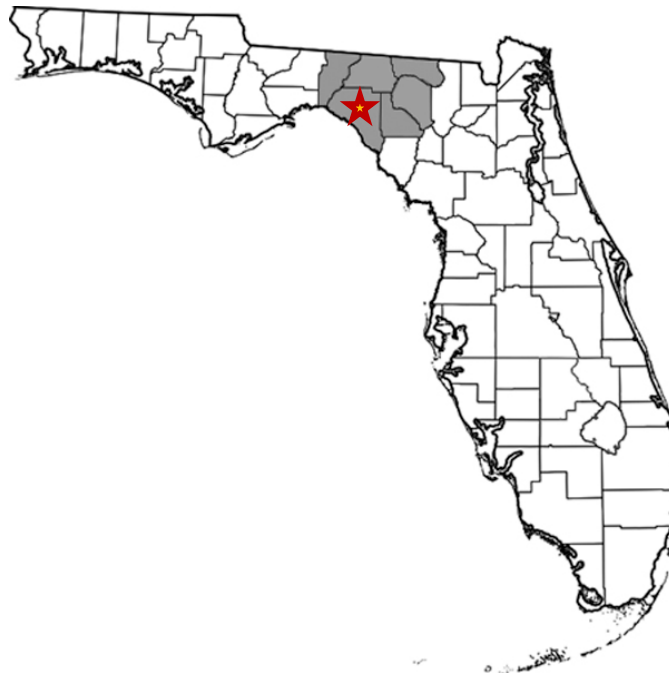




## District Data

### Taylor County (2010 Census Data)

	County	FL
Population, 2010	22,570	18,801,310
Persons under 18, 2000 to 2010	20.6%	21.9%
White, 2010	75.2%	75%
Black, 2010	20.7%	16%
American Indian & Alaska Native, 2010	0.8%	0.4%
Asian, 2010	0.7%	2.4%
Native Hawaiian and Other Pacific Islander, 2010		0.1%
Two more races, 2010	1.7%	2.4%
Hispanic or Latino, 2010	3.4%	22.5%
White not Hispanic, 2010	73.0%	57.9%
High School Graduates, % of persons 25+ 2005-2009	79.9%	84.9%
Bachelor's degree or higher, % of persons 25+ 2005-2009	10.7%	25.6%
Per capita money income in past 12 months, 2005-2009	\$17,248	\$26,503.00
Person's below poverty level, 2009	23.8%	15.0%
Land area, square miles	1,041.91	53,926.82





# Glossary of Terms

**Academic Year** – The fall, spring, and summer terms of overlapping calendar years. For example, fall 2006, spring 2007, and summer 2007 comprise the 2006-2007 academic year. This differs from the reporting year, which begins with summer and ends with spring.

**Accreditation** – Certification by an official review board that specific requirements have been met. NFCC is accredited by the Southern Association of Colleges and Schools (SACS).

**Adult Basic Education (ABE)** – Education for adults to help them attain basic or functional literacy skills.

**Advanced & Professional (A&P)** – A program area with courses designed to provide the first two years of course work leading to an advanced or professional degree (bachelors, masters, etc.). It includes general education and specialized lower-division courses necessary to transfer into a degree program.

**Associate in Arts (AA)** – A program of instruction that consists of courses offered to freshmen and sophomores. This degree will transfer to the state university system and is awarded when a student completes 60 hours of college credit along with specified performance requirements.

**Associate in Applied Science (AAS)** – A program of instruction with courses to prepare students for entry into employment. These courses are usually not transferrable to a baccalaureate program.

**Associate in Science (AS)** – A program of instruction with courses to prepare students for entry into employment or college transfer. These courses are more likely transferrable to a baccalaureate program than the AAS.

**College Credit** – The type of credit assigned to courses that are part of an organized and specified college degree or program.

**Credit Hour** – The number of contact hours for a course.

**Dual Enrollment** – Enrollment in two institutions at the same time, such as a college and high school, which allows students to earn both high school and college credit simultaneously.

**Duplicated Headcount** – A headcount measure by which students may be counted in more than one category. This measure usually describes the number of seats taken across multiple courses.

**First Time in College (FTIC)** – A student attending college for the first time with no prior credit toward a degree or formal award.

**Full-time equivalency (FTE)** – A measure to describe various cohorts of students based on the number of student credit hours generated. FTE is computed by dividing the total number of credit or clock hours by 30.

**Full-time Student** – A student who is registered for 12 or more credit hours in the fall and spring semesters or four or more credit hours in the summer semester.

**General Education Development (GED)Test** – A measure designed to provide an opportunity for adults who have not graduated from high school to earn a State of Florida High School diploma by measuring the major academic skills and knowledge associated with a high school program of study.

**Part-time Student** – A student who is registered for less than 12 credit hours in the fall and spring terms or fewer than four credit hours in the summer term.

**Postsecondary Adult Vocational Program (PSAV)** – Job preparatory programs through which a student may receive a vocational certificate upon completion of instruction.

**Postsecondary Vocational (PSV)** – Vocational education for students who have left or completed high school and who are enrolled in an organized program of study for which credit is given toward an associate degree.

**Reporting Year** – The summer, fall, and spring terms of overlapping calendar years. For example, summer 2006, fall 2007, and spring 2007 comprise the 2006-2007 reporting year. This differs from the academic year, which begins with fall and ends with summer.

**Returning Students** – Students enrolled for the current term who were also enrolled in a prior term at the College.

**Unduplicated Headcount** – A headcount measure by which students are counted in only one category.

**Vocational Certificate** – The award for satisfactory completion of a program of study designed to prepare students for entry into an occupation.

**Workforce Education Program** – Training and/or retraining for adults who are out of school and already in the workforce.