

# NFCC

**North Florida**  
COMMUNITY COLLEGE



## FACTBOOK 2010-2011

*Small College. Big Possibilities.*



# NFCC

*Small College. Big Possibilities.*

Our mission is to provide innovative solutions and quality support services to help members of our College community effectively achieve their goals. The 2009-2010 NFCC Fact Book provides information about North Florida Community College and includes student, financial, and personnel data. We have made every effort to ensure timely and accurate information. We hope you will use this publication on a continual basis. We welcome feedback and suggestions, and our measure of success is the degree to which people find this publication informative and useful.

# Table of Contents

---

## **Enrollment**

Student Headcount.....	5
By Program.....	6
By County .....	10
By Gender.....	12
By Age .....	13
By Ethnicity.....	14
By Time of Day .....	17
Instructor/Student Ratio.....	17

## **Student Success**

Degrees Awarded .....	19
Graduates by Program.....	19
First Time in College Retentions.....	20
College Preparatory Retentions.....	21
Vocational Placement.....	22
Student Transfer Data .....	23
Grade Distribution .....	23

## **Distance Learning**

Total Courses and Students .....	26
Student Demographics .....	27

## **Dual Enrollment**

Enrollment & Cost by County.....	29
----------------------------------	----

## **Financial Aid**

Total Distribution .....	33
Awards by County .....	34

## **Other Information**

NFCC Library .....	37
NFCC Foundation .....	39
Personnel .....	41
Finances .....	43
District Data (2010 Census).....	46
Glossary of Terms .....	52

A photograph of a large, dark red sign with white text that reads "NORTH FLORIDA COMMUNITY COLLEGE". The sign is mounted on a grey stone wall. In the background, there are trees with green and yellow leaves and a building with windows. In the foreground, there is a grassy area with a concrete path and a bed of white flowers.

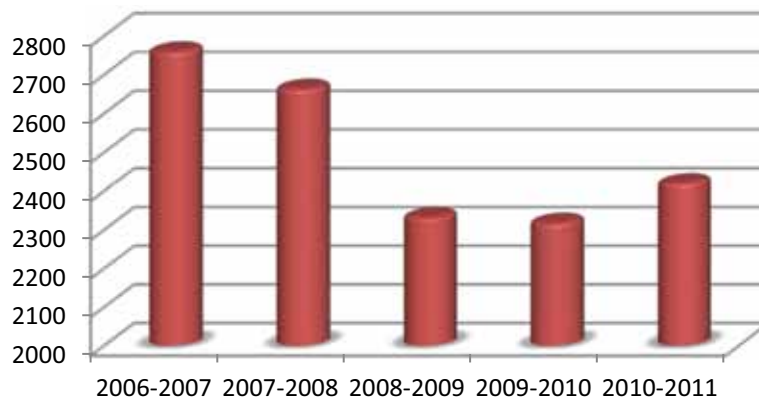
NORTH FLORIDA  
COMMUNITY COLLEGE

**ENROLLMENT**

# Section 1: Enrollment

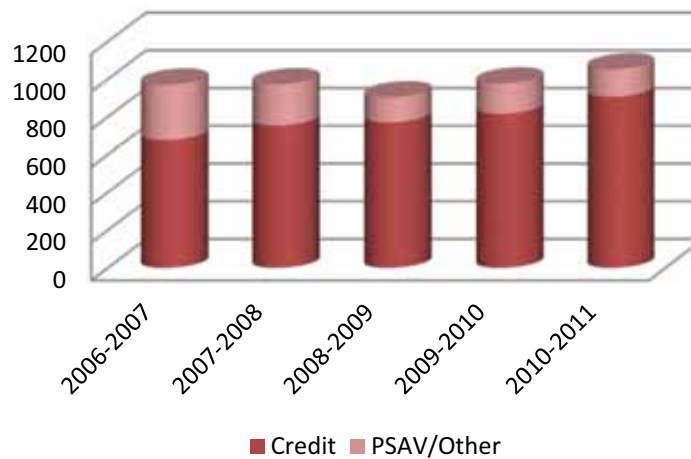
## Total Student Headcount (2006-2011)

2006-2007	2007-2008	2008-2009	2009-2010	2010-2011
2759	2663	2332	2317	2419



## Total Student FTE (2006-2011)

	2006-2007	2007-2008	2008-2009	2009-2010	2010-2011
<b>Credit</b>	677	754	771	816	907
<b>PSAV/Other</b>	293	218	132	160	145
<b>Total</b>	<b>970</b>	<b>972</b>	<b>903</b>	<b>976</b>	<b>1052</b>

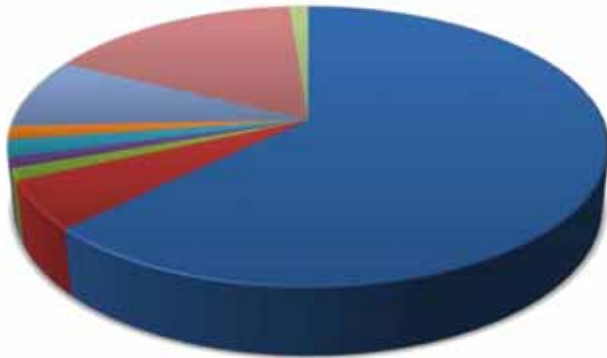


# Enrollment

---

## Enrollment by Program (2010-2011)

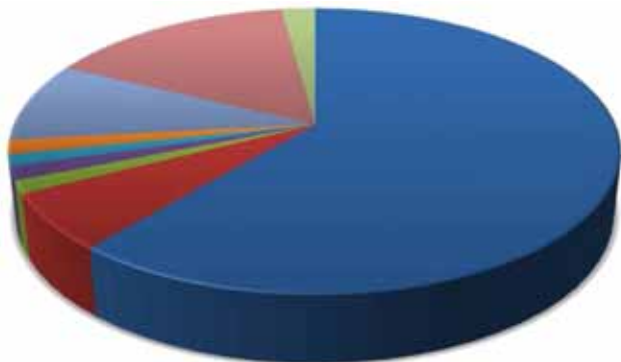
### Fall 2010



■ AA ■ AS ■ AAS ■ AS Cert ■ ATD ■ EPI ■ PSAV ■ WFS ■ NDS

Program:		
AA	1083	63%
AS	95	6%
AAS	23	1%
AS Cert	21	1%
ATD	34	2%
EPI	27	2%
PSAV	141	8%
WFS	282	16%
NDS	21	1%
<b>Total</b>	<b>1727</b>	

### Spring 2011



■ AA ■ AS ■ AAS ■ AS Cert ■ ATD ■ EPI ■ PSAV ■ WFS ■ NDS

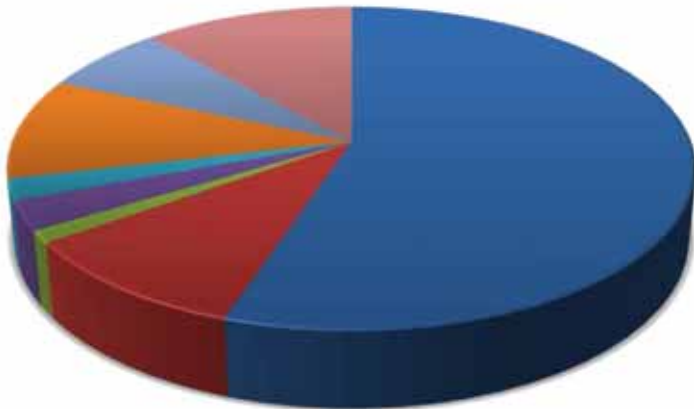
Program:		
AA	814	59%
AAS	15	1%
AS	200	15%
AS Cert	25	2%
ATD	19	1%
EPI	15	1%
PSAV	122	9%
WFS	136	10%
NDS	25	2%
<b>Total</b>	<b>1371</b>	

# Enrollment

---

## Enrollment by Program (2010-2011)

### Summer 2011



Program		
AA	447	55%
AS	81	10%
AAS	10	1%
AS Cert	24	3%
ATD	17	2%
PSAV	82	10%
WFS	56	7%
NDS	94	12%
<b>Total</b>	<b>811</b>	

■ AA ■ AS ■ AAS ■ AS Cert ■ ATD ■ PSAV ■ WFS ■ NDS

### Legend of programs:

- AA: Associates in Arts
- AS: Associates in Science
- AAS: Associates in Applied Science
- AS Cert: Associates in Science Certificate
- ATD: Applied Technical Diploma
- EPI: Educator Preparation Institute
- PSAV: Post-Secondary Adult Vocational Certificate
- WFS: Workforce / Supplemental
- NDS: Non-Degree Seeking

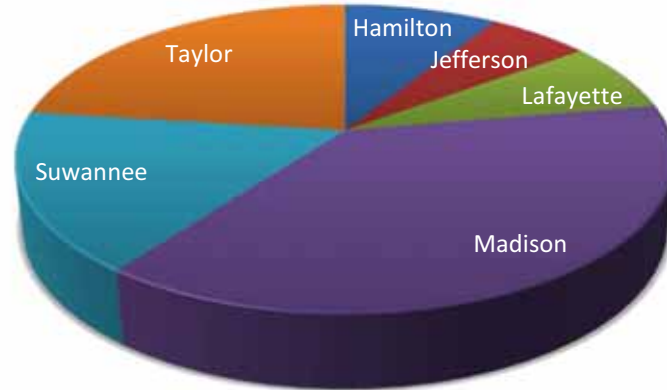
# Enrollment

---

## County Enrollment by Term (2010-2011)

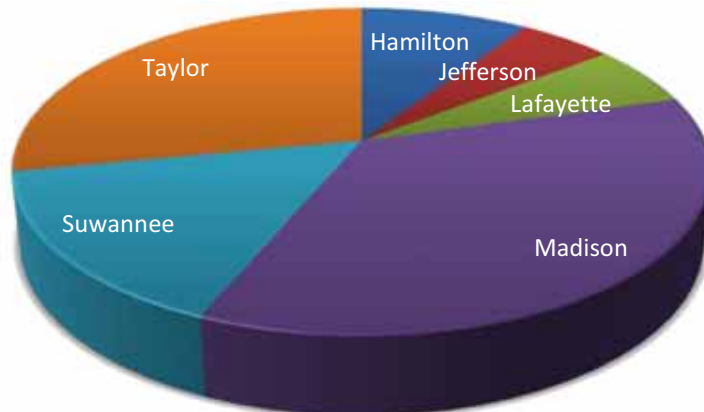
### Fall 2010

Hamilton	141	8%
Jefferson	92	5%
Lafayette	115	7%
Madison	593	34%
Suwannee	261	15%
Taylor	360	21%
Other FL	140	8%
Out of State	25	1%
<b>Total</b>	<b>1727</b>	



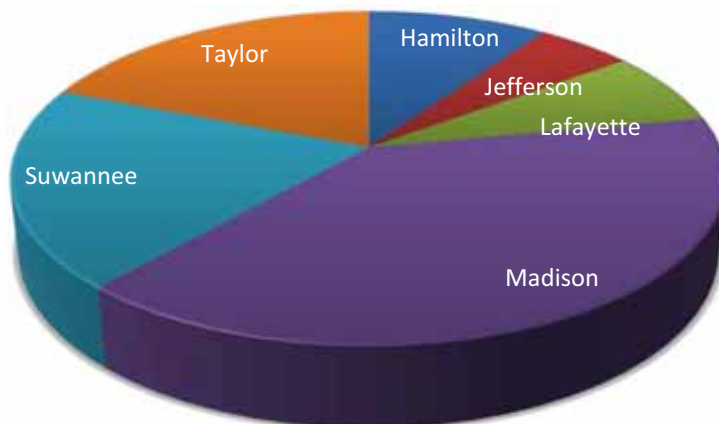
### Spring 2011

Hamilton	147	9%
Jefferson	82	5%
Lafayette	96	6%
Madison	567	35%
Suwannee	247	15%
Taylor	443	28%
Other FL	3	0.2%
Out of State	13	1%
<b>Total</b>	<b>1598</b>	



### Summer 2011

Hamilton	71	9%
Jefferson	38	5%
Lafayette	53	7%
Madison	290	36%
Suwannee	143	18%
Taylor	140	17%
Other FL	56	7%
Out of State	20	2%
<b>Total</b>	<b>811</b>	



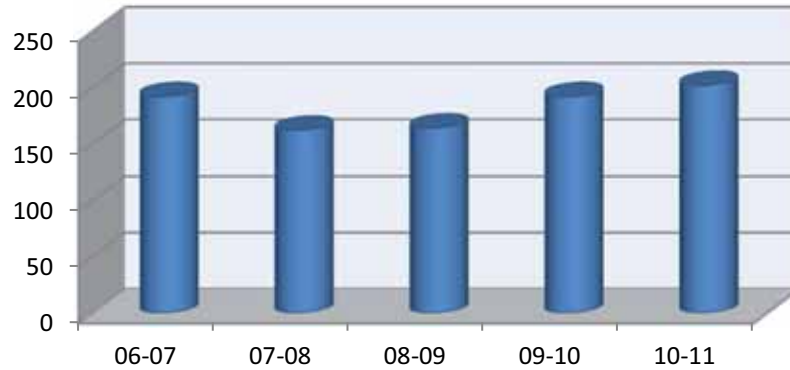


# Enrollment

## 5 Year County Enrollment (2006-2011)

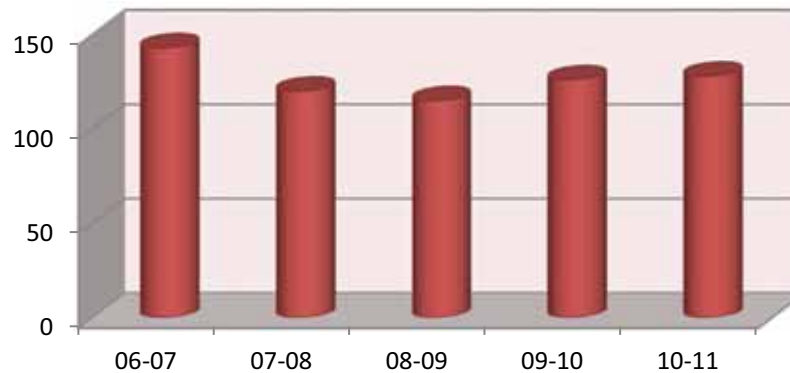
### Hamilton

06-07	192
07-08	162
08-09	164
09-10	192
10-11	202



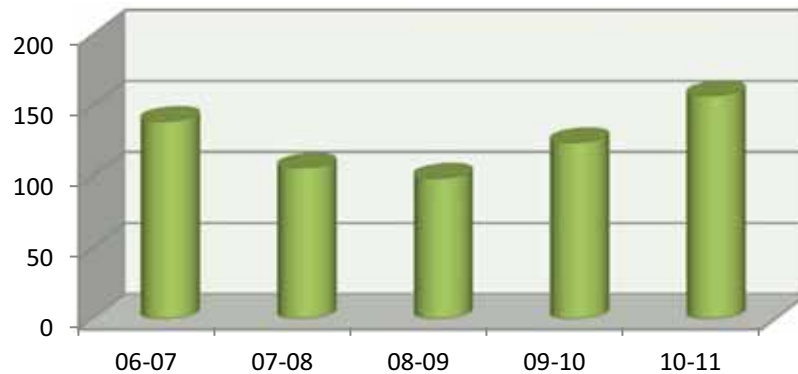
### Jefferson

06-07	143
07-08	120
08-09	115
09-10	126
10-11	128



### Lafayette

06-07	139
07-08	106
08-09	99
09-10	124
10-11	157

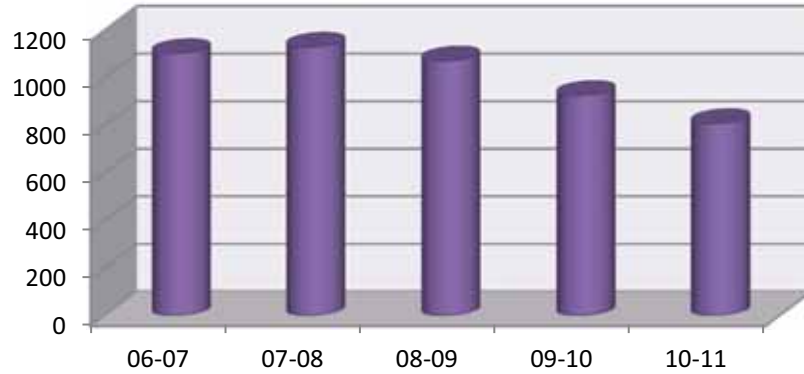


# Enrollment

## 5 Year County Enrollment (2006-2011)

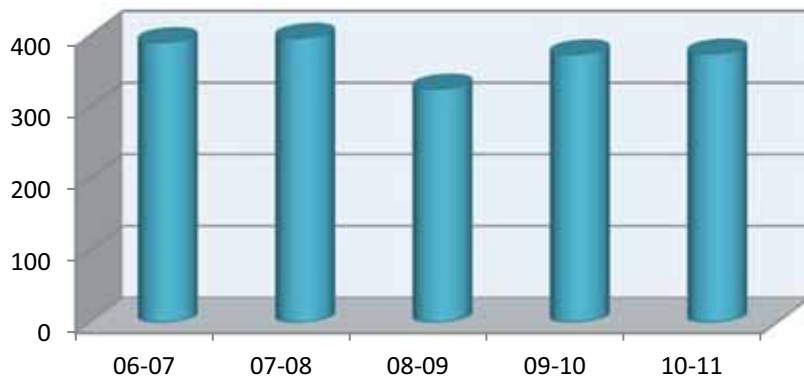
### Madison

06-07	1104
07-08	1131
08-09	1073
09-10	928
10-11	810



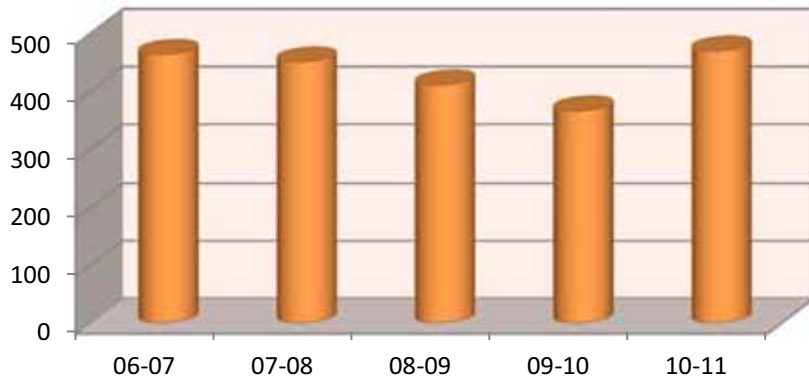
### Suwannee

06-07	391
07-08	397
08-09	326
09-10	374
10-11	375



### Taylor

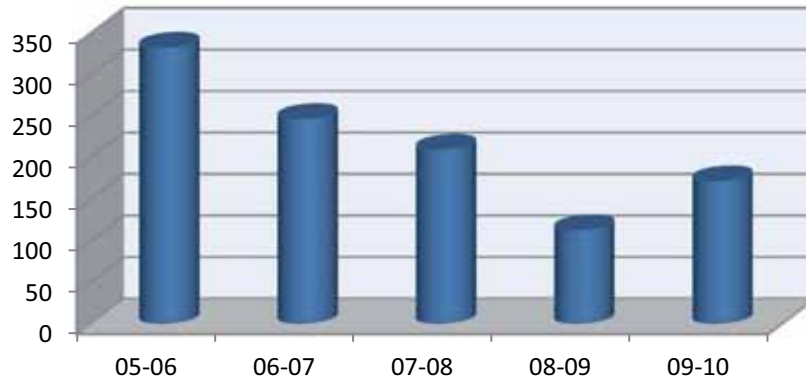
06-07	465
07-08	452
08-09	412
09-10	367
10-11	471



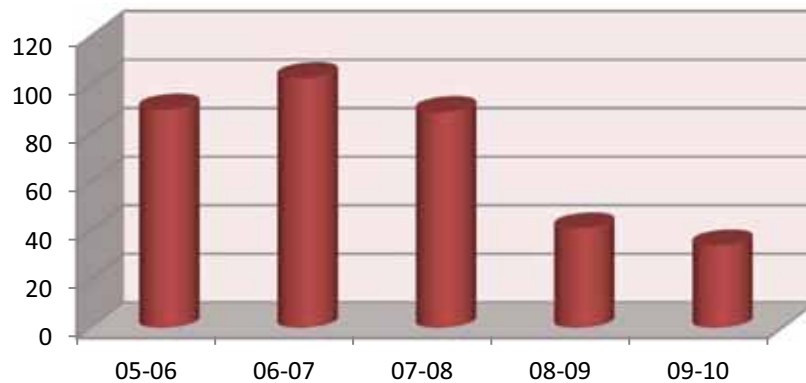
# Enrollment

## 5 Year County Enrollment (2006-2011)

<b>Other Florida</b>	
06-07	247
07-08	210
08-09	113
09-10	172
10-11	249



<b>Out of State</b>	
06-07	103
07-08	89
08-09	41
09-10	34
10-11	31



## District High School Graduates Enrolled (2006-2011)

	2005-06	2006-07	2007-08	2008-09	2009-10
<b>District Grads Enrolled in NFCC</b>	26.5%	26.0%	25.3%	25.2%	25.7%
<b>FL Grads in their District CC</b>	31.2%	31.6%	33.2%	34.6%	34.6%

# Enrollment

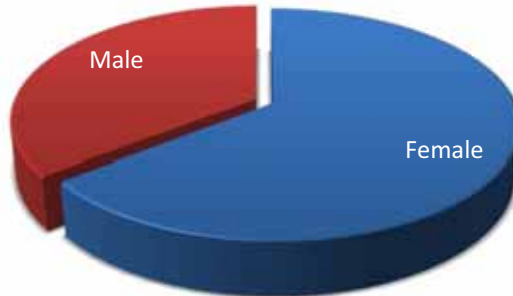
---

## Enrollment by Gender (2010-2011)

---

### Fall 2010

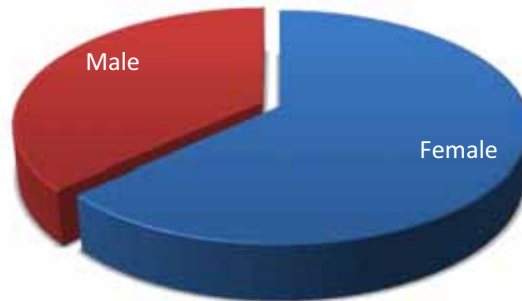
<b>Female</b>	1098	64%
<b>Male</b>	629	36%



---

### Spring 2011

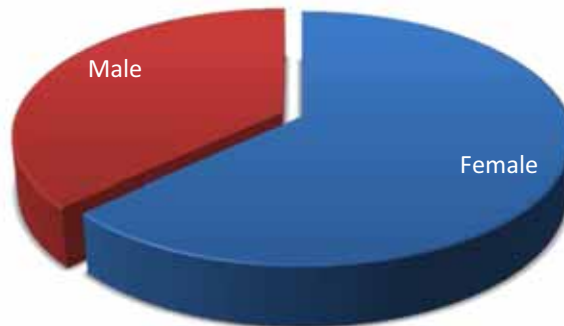
<b>Female</b>	991	62%
<b>Male</b>	607	38%



---

### Summer 2011

<b>Female</b>	509	63%
<b>Male</b>	302	37%



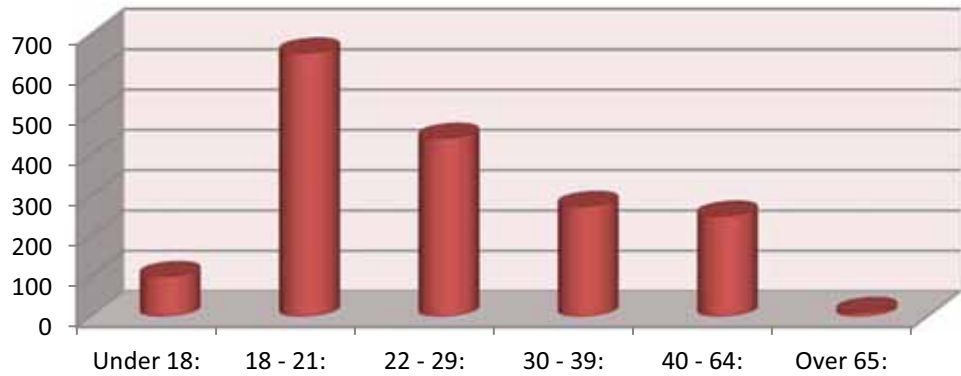
# Enrollment

---

## Enrollment by Age (2010-2011)

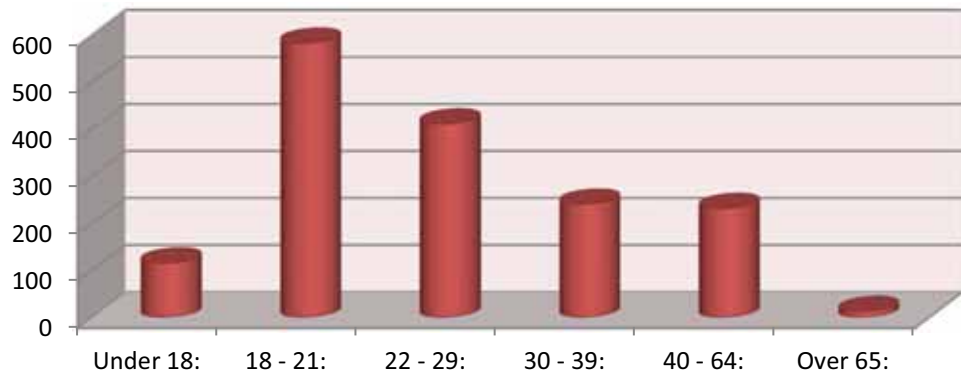
### Fall 2010

<b>Under 18:</b>	99
<b>18 - 21:</b>	654
<b>22 - 29:</b>	442
<b>30 - 39:</b>	273
<b>40 - 64:</b>	249
<b>Over 65:</b>	10
<b>Total:</b>	1727
<b>Average Age:</b>	27



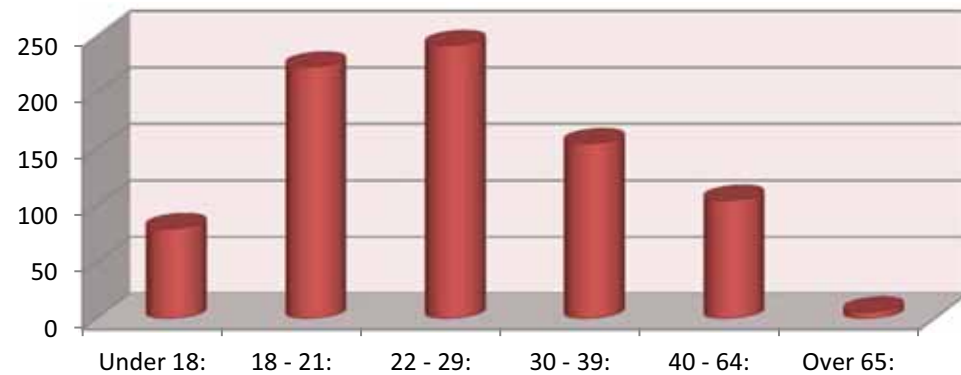
### Spring 2011

<b>Under 18:</b>	116
<b>18 - 21:</b>	584
<b>22 - 29:</b>	412
<b>30 - 39:</b>	241
<b>40 - 64:</b>	232
<b>Over 65:</b>	13
<b>Total:</b>	1598
<b>Average Age:</b>	26



### Summer 2011

<b>Under 18:</b>	80
<b>18 - 21:</b>	223
<b>22 - 29:</b>	242
<b>30 - 39:</b>	155
<b>40 - 64:</b>	105
<b>Over 65:</b>	6
<b>Total:</b>	811
<b>Average Age:</b>	27

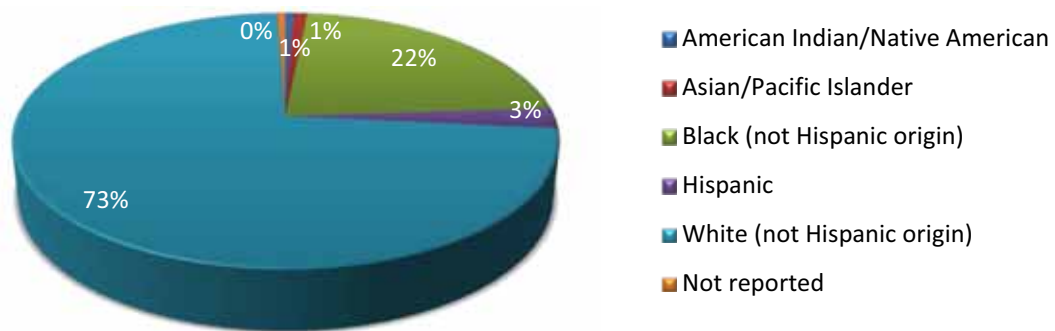


# Enrollment

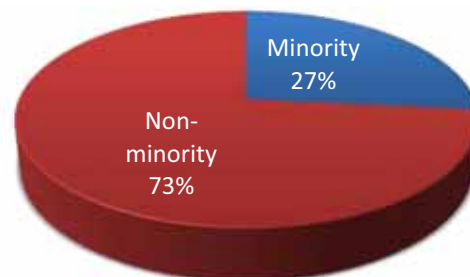
## Enrollment by Ethnicity (2010-2011)

### FALL 2010

	#	%
American Indian/Native American	11	1%
Asian/Pacific Islander	16	1%
Black (not Hispanic origin)	386	22%
Hispanic	45	3%
White (not Hispanic origin)	1259	73%
Not reported	10	1%
<b>Total:</b>	<b>1727</b>	



	#
Minority	458
Non-minority	1259

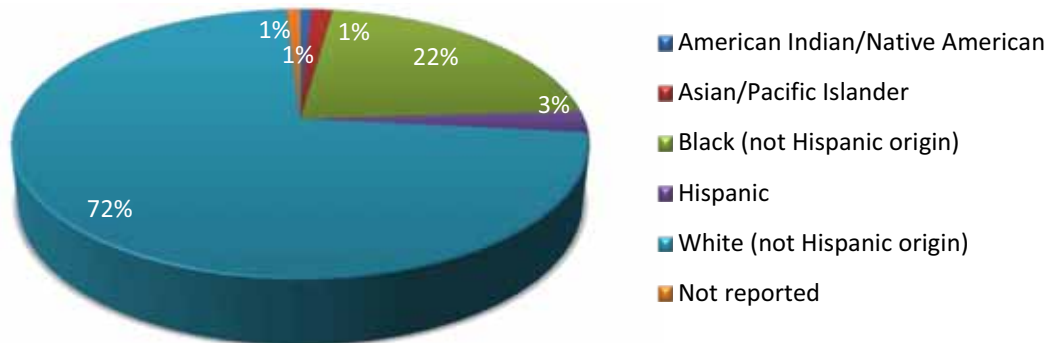


# Enrollment

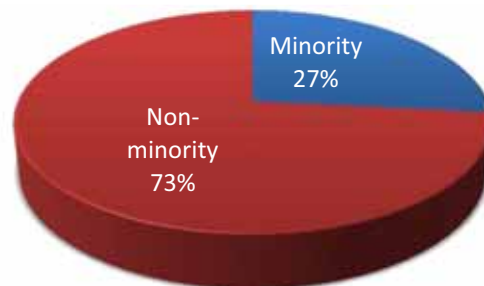
## Enrollment by Ethnicity (2010-2011)

### SPRING 2011

	#	%
American Indian/Native American	12	1%
Asian/Pacific Islander	23	1%
Black (not Hispanic origin)	349	22%
Hispanic	41	3%
White (not Hispanic origin)	1158	72%
Not reported	15	1%
<b>Total</b>	<b>1598</b>	



	#
Minority	425
Non-minority	1158

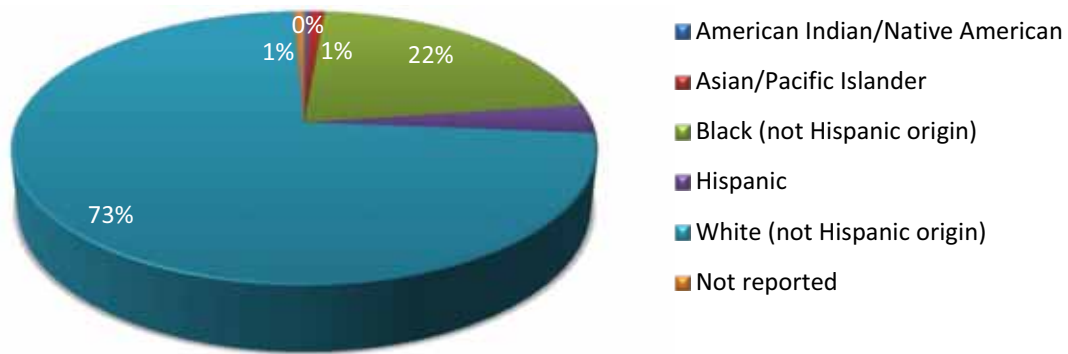


# Enrollment

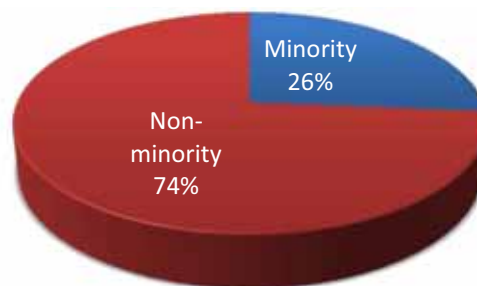
## Enrollment by Ethnicity (2010-2011)

### SUMMER 2011

	#	%
American Indian/Native American	3	0.4%
Asian/Pacific Islander	8	1%
Black (not Hispanic origin)	174	21%
Hispanic	28	3%
White (not Hispanic origin)	593	73%
Not reported	5	1%
<b>Total</b>	<b>811</b>	



	#
Minority	213
Non-minority	593





## Enrollment

---

### Student Schedule by Day & Time (2010-2011)

<b>FALL 2010</b>	<b>Monday</b>	<b>Tuesday</b>	<b>Wednesday</b>	<b>Thursday</b>	<b>Friday</b>	<b>Saturday</b>
8:00 - 9:15 a.m.	385	531	522	479	281	106
9:30 - 10:45 a.m.	266	307	279	276	30	29
11:00 - 12:15 p.m.	194	211	194	211	14	29
12:30 - 1:45 p.m.	247	241	249	341	94	0
2:00 - 4:00 p.m.	212	159	226	132	2	29
5:00 p.m. or later	295	337	226	283	37	0

<b>SPRING 2011</b>	<b>Monday</b>	<b>Tuesday</b>	<b>Wednesday</b>	<b>Thursday</b>	<b>Friday</b>	<b>Saturday</b>
8:00 - 9:15 a.m.	463	486	458	491	204	74
9:30 - 10:45 a.m.	306	214	293	214	21	0
11:00 - 12:15 p.m.	182	234	153	234	12	0
12:30 - 1:45 p.m.	268	218	233	193	61	32
2:00 - 4:00 p.m.	168	112	183	102	2	0
5:00 p.m. or later	262	321	285	202	21	23

### Instructor to Student Ratio (2010-2011)

	<b>Students</b>	<b>Courses</b>	<b>Instructors</b>	<b>Ratio</b>
06-07	2784	976	133	21
07-08	2665	876	112	24
08-09	2343	721	104	23
09-10	2317	634	105	22
10-11	2423	687	110	22

### Average Class Size (2010-2011)

	<b>Credit</b>	<b>PSAV</b>
Fall 2010	23	17
Spring 2011	20	13
Summer 2011	20	14



**STUDENT SUCCESS**

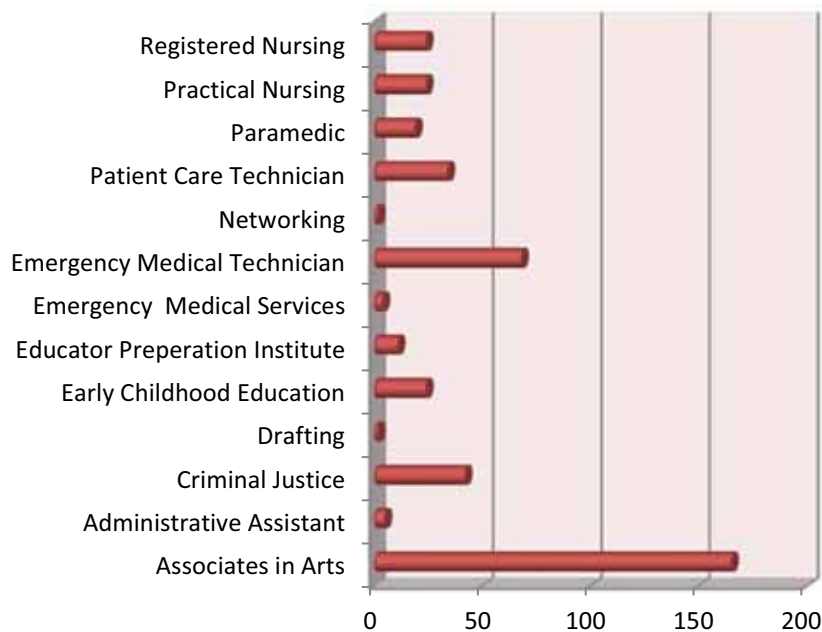
# Section 2: Student Success

## Degrees Awarded (2006–2011)

	06-07	07-08	08-09	09-10	10-11
Associates in Arts	139	114	159	137	166
Associates in Science	0	21	19	22	29
Associates in Applied Science	8	6	5	4	5
ATD	13	27	21	50	68
College Credit Certificates	4	12	0	31	20
Certificates	122	116	105	140	125
Educator Preparation	25	23	15	14	11
<b>Total</b>	<b>311</b>	<b>319</b>	<b>324</b>	<b>398</b>	<b>424</b>

## Graduates by Program (2010-2011)

Associates in Arts	<b>165</b>	Emergency Medical Tech	<b>68</b>
Administrative Assistant	<b>5</b>	Networking	<b>2</b>
Criminal Justice	<b>42</b>	Paramedic	<b>19</b>
Drafting	<b>2</b>	Patient Care Technician	<b>34</b>
Early Childhood Education (AS & Cert.)	<b>24</b>	Practical Nursing	<b>24</b>
Educator Preparation Institute	<b>11</b>	Registered Nursing	<b>24</b>
Emergency Medical Services	<b>4</b>	<b>Total</b>	<b>424</b>



## Student Success

### First Time in College Retention & Success (2007 – 2011)

	Cohort	%Graduated	Retention Rate	Success Rate
<b>2011*</b>	149	40.90%	56.38%	82.55%
<b>2010*</b>	152	43.42%	57.24%	83.55%
<b>2009*</b>	158	48.73%	62.66%	79.75%
<b>2008*</b>	133	35.34%	46.62%	81.20%
<b>2007*</b>	145	46.21%	57.24%	82.07%

\*2011 tracking period Fall 2007 through 2011

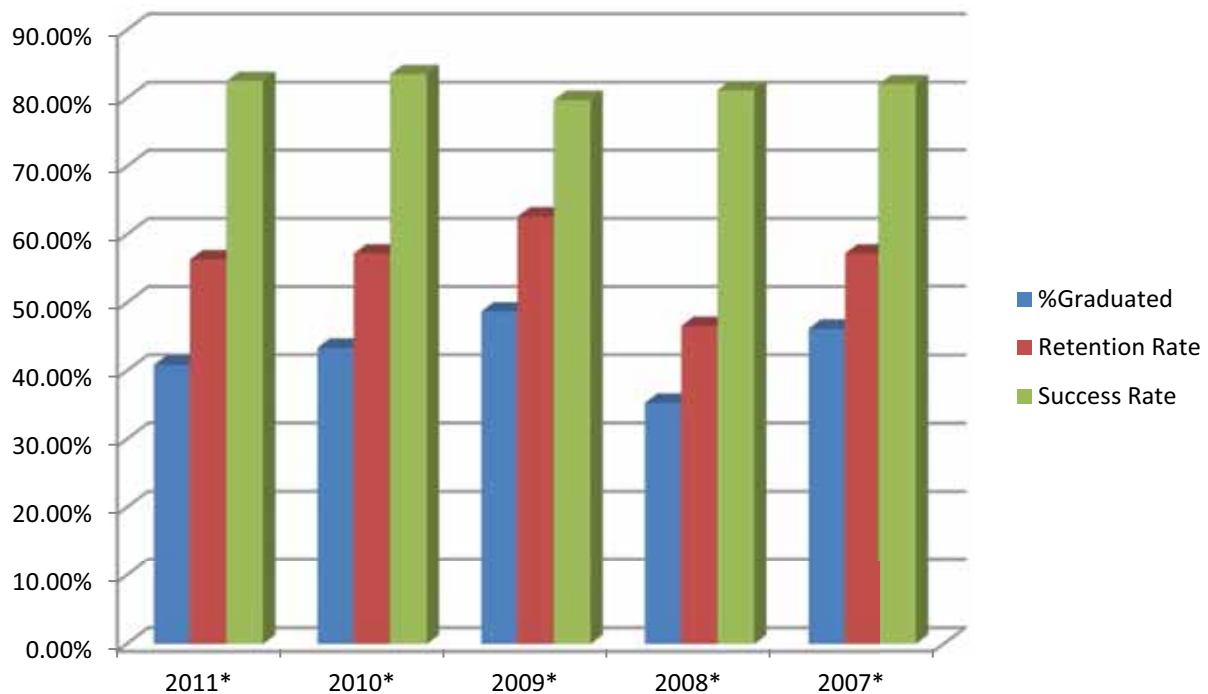
2010 tracking period Fall 2006 through 2010

2009 tracking period Fall 2005 through 2009

2008 tracking period Fall 2005 through 2008

2007 tracking period Fall 2003 through 2007

#### Accountability Outcome Measure 1 Part 2



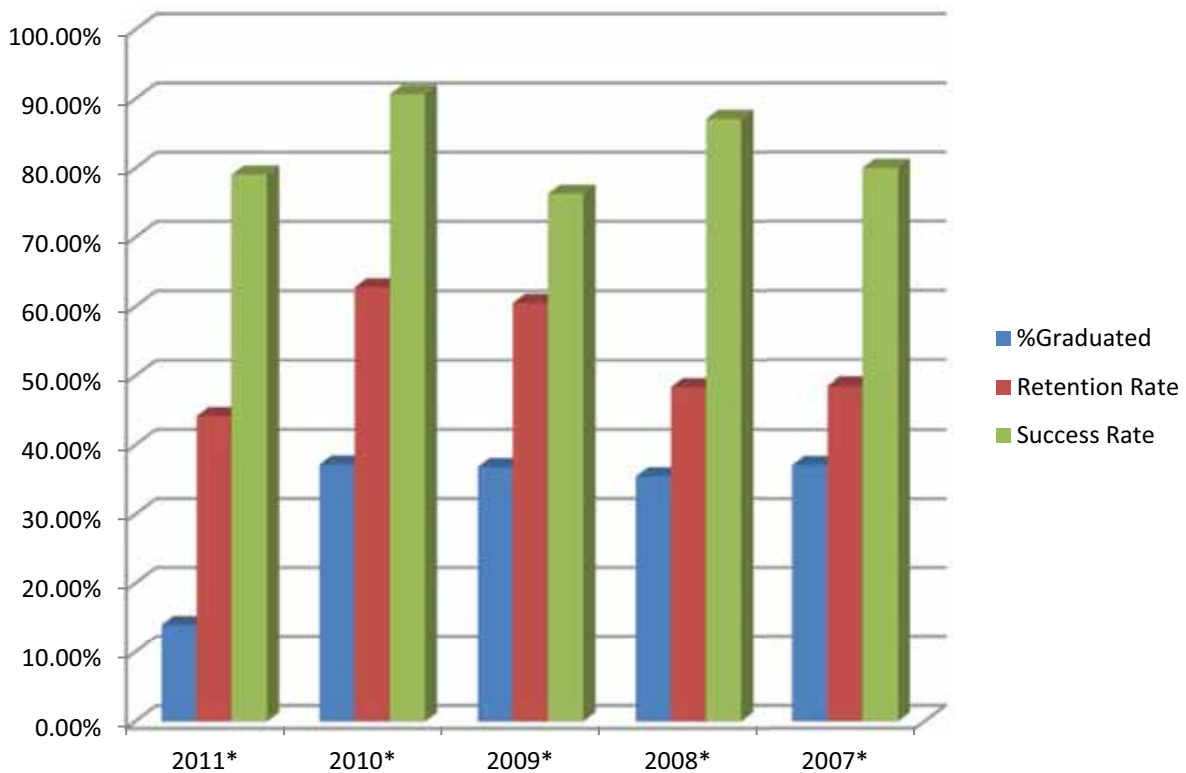
# Student Success

## College Preparatory Retention & Success (2007 – 2011)

	Cohort	%Graduated	Retention Rate	Success Rate
<b>2011*</b>	43	13.95%	44.19%	79.07%
<b>2010*</b>	43	37.21%	62.79%	90.70%
<b>2009*</b>	38	36.84%	60.53%	76.32%
<b>2008*</b>	31	35.48%	48.39%	87.10%
<b>2007*</b>	35	37.14%	48.57%	80.00%

\*2011 tracking period Fall 2007 through 2011  
 2010 tracking period Fall 2006 through 2010  
 2009 tracking period Fall 2005 through 2009  
 2008 tracking period Fall 2005 through 2008  
 2007 tracking period Fall 2003 through 2007

Accountability Outcome Measure 4 Part 2



## Student Success

---

### Vocational Placement (2007 – 2009)

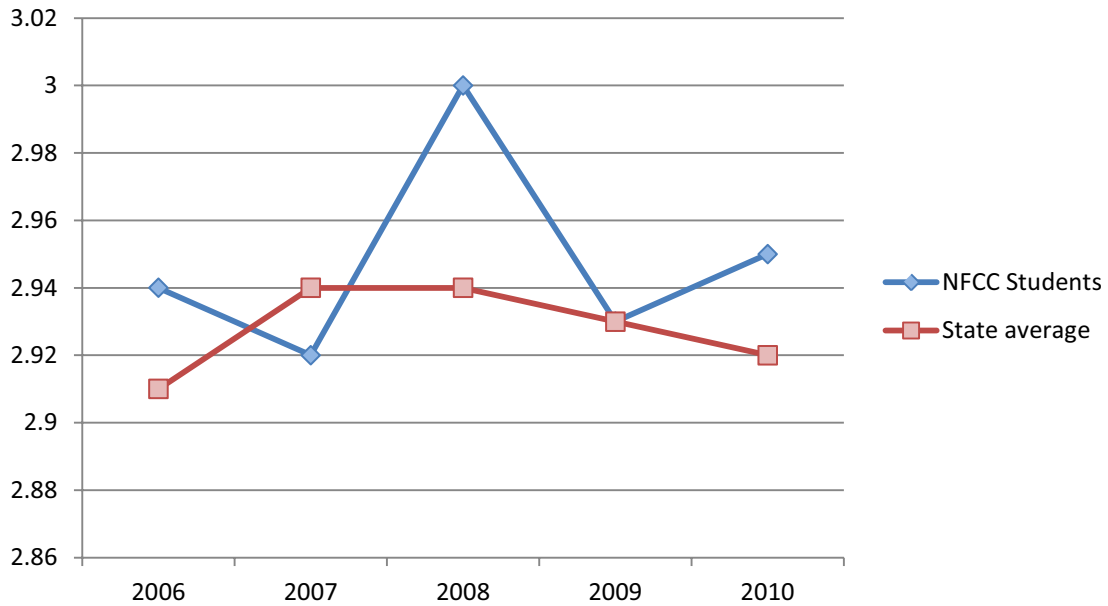
	2007-2008			2008-2009		
	Pool	Placed	%Placed	Pool	Placed	%Placed
<b>Architectural Drafting</b>	1	1	100.00%	7	6	85.70%
<b>Correctional Officer</b>	17	16	94.12%	23	17	73.91%
<b>Criminal Justice Technology</b>	3	3	100.00%	4	4	100.00%
<b>Early Childhood Education</b>	6	6	100.00%	5	5	100.00%
<b>Emergency Medical Technician</b>	16	13	81.25%	-	-	-
<b>Emergency Medical Services AS Degree</b>	-	-	-	1	1	100.00%
<b>Law Enforcement Officer</b>	14	12	85.71%	17	13	76.47%
<b>Legal Secretary</b>	-	-	-	-	-	-
<b>Nursing</b>	20	20	100.00%	16	16	100.00%
<b>Office Management</b>	1	1	100.00%	-	-	-
<b>Paramedic</b>	4	4	100.00%	2	2	100.00%
<b>Patient Care Technician</b>	19	17	89.47%	29	29	100.00%
<b>Practical Nursing</b>	20	20	100.00%	14	14	100.00%
<b>X Corrections Officer to Law Enforcement Officer</b>	10	10	100.00%	12	12	100.00%

Accountability Outcome Measure 3 Part 2

## Student Success

### NFCC Transfer Success (2003-2008)

Mean cumulative grade-point averages for NFCC graduates who transfer to Florida public universities



	2006	2007	2008	2009	2010
<b>NFCC Students</b>	2.94	2.92	3.00	2.93	2.95
<b>State average</b>	2.91	2.94	2.94	2.93	2.92

Articulation Report Table 12

### Top Universities receiving NFCC Graduates

University	Avg. GPA
FSU – Tallahassee	3.07
FAMU – Tallahassee	2.69
UF – Gainesville	2.90
UCF – Orlando	3.26
UNF – Jacksonville	2.85
USF – Miami	3.12

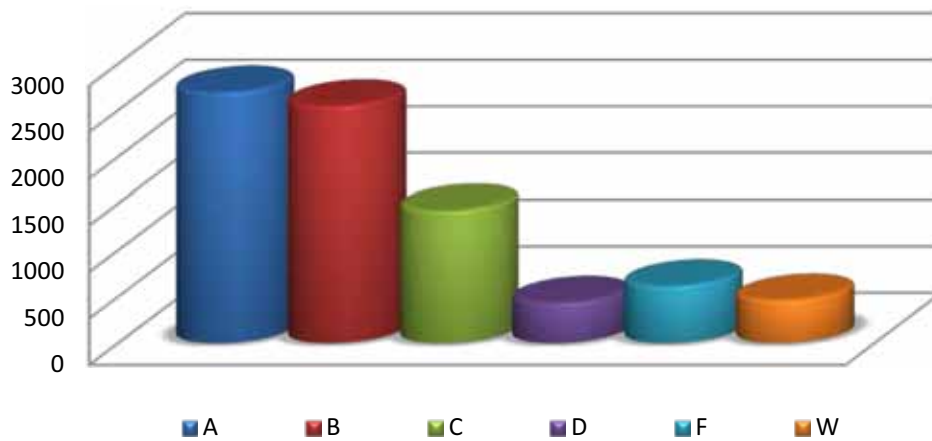
Articulation Report Table 12

## Student Success

---

### Grade Distribution in all NFCC Courses (2010-2011)

A	B	C	D	F	W	Total
3314	3018	1433	406	576	672	9419



### Grade Distribution in NFCC College Prep Courses (2010-2011)

A	B	C	D	F	W	Total
2348	2323	1202	337	521	519	7250

### Grade Distribution in NFCC College Prep Courses (2010-2011)

A	B	C	D	F	W	Total
110	195	109	63	22	118	617

### Grade Distribution in NFCC PSAV Courses (2010-2011)

A	B	C	D	F	W	Total
755	493	118	6	29	31	1432

### Grade Distribution in NFCC Online Courses (2010-2011)

A	B	C	D	F	W	Total
515	491	248	79	210	189	1732





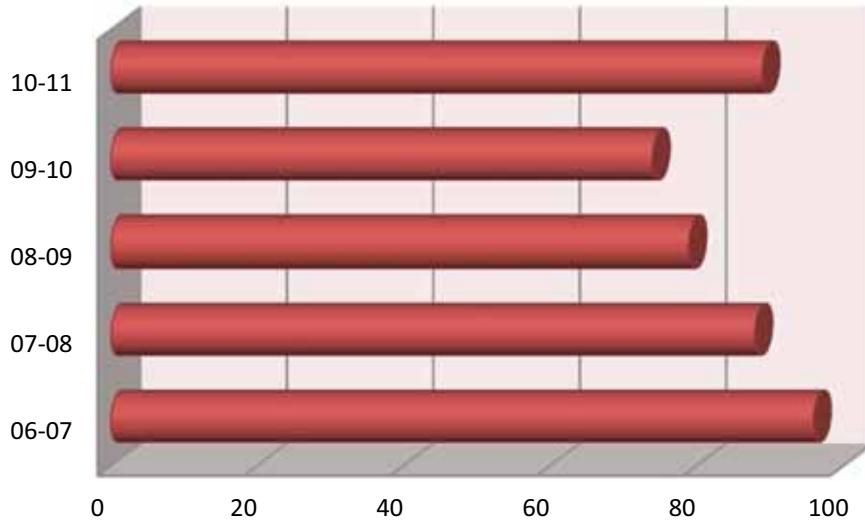
**DISTANCE LEARNING**

# Section 3: Distance Learning

---

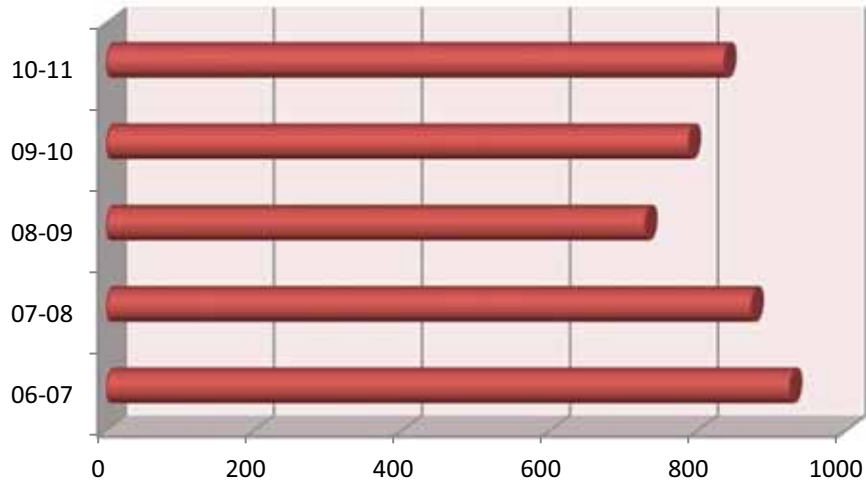
### Number of Online Courses (2006-2011)

Year	# of courses
06-07	96
07-08	88
08-09	79
09-10	74
10-11	89



### Number of Online Students (2006-2011)

Year	# of students
06-07	924
07-08	872
08-09	728
09-10	787
10-11	835



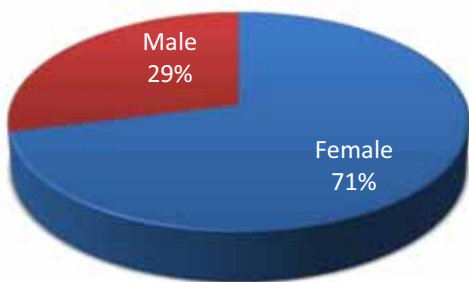
# Distance Learning

---

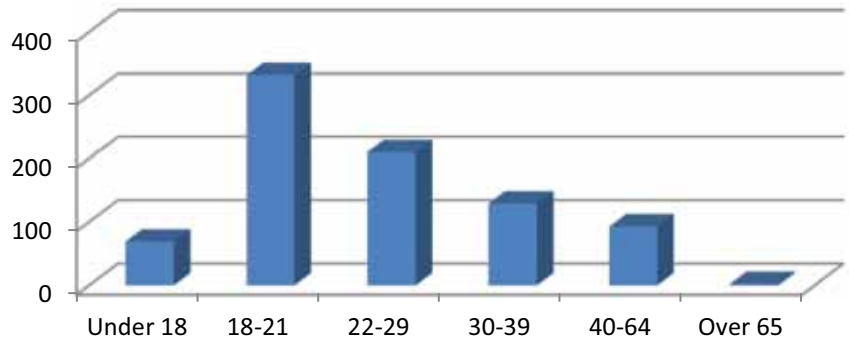
## Online Student Demographics (2010-2011)

### Gender

<b>Female</b>	<b>593</b>
<b>Male</b>	<b>242</b>



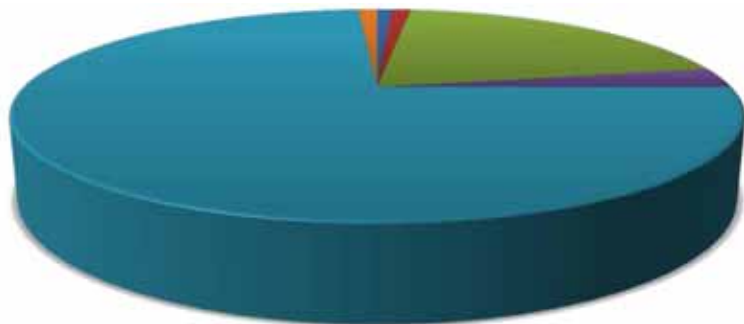
### Age



Under 18	18-21	22-29	30-39	40-64	Over 65
69	332	210	129	93	2

### Ethnicity

American India/Alaskan Native:	<b>7</b>
Asian:	<b>9</b>
Black:	<b>167</b>
Hispanic:	<b>26</b>
White:	<b>617</b>
Not Reported:	<b>9</b>



■ American India/Alaskan Native	■ Asian
■ Black	■ Hispanic
■ White	■ Not Reported



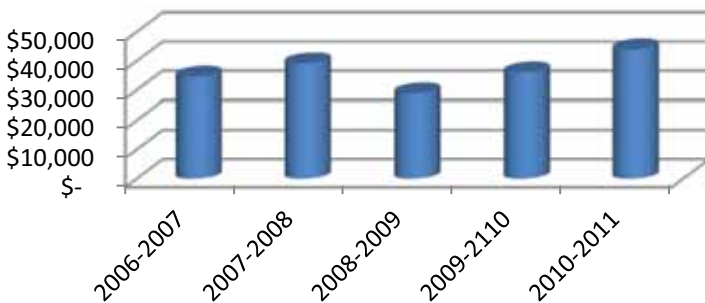
**DUAL ENROLLMENT**

# Section 4: Dual Enrollment

## Number and cost of Dual Enrolled Student (2006-2011)

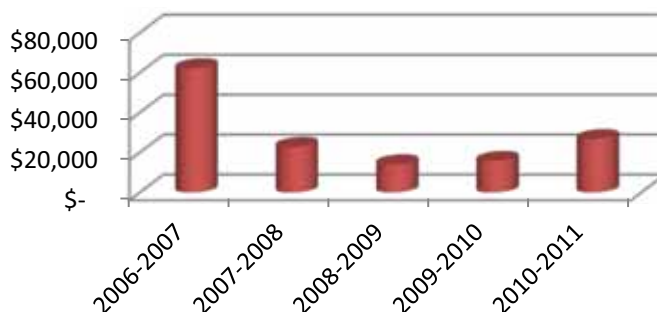
### Hamilton

	# of Students	Credit hours	County Value	Total NFCC DE Value	% Total DE Value
<b>2006-2007</b>	30	526	\$ 34,606	\$ 241,481	14%
<b>2007-2008</b>	28	595	\$ 39,151	\$ 210,296	19%
<b>2008-2009</b>	29	395	\$ 28,835	\$ 230,899	12%
<b>2009-2110</b>	44	438	\$ 36,004	\$ 222,105	16%
<b>2010-2011</b>	37	500	\$ 44,000	\$ 300,754	15%
<b>5 Yr. Total</b>	168	2454	\$ 182,596	\$ 1,205,535	



### Jefferson

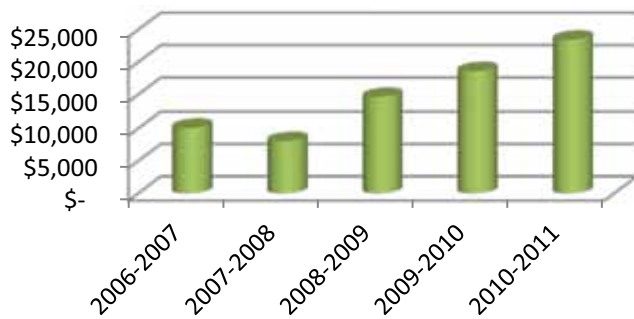
	# of Students	Credit hours	County Value	Total NFCC DE Value	% Total DE Value
<b>2006-2007</b>	49	944	\$ 62,115	\$ 241,481	26%
<b>2007-2008</b>	26	364	\$ 22,766	\$ 210,296	11%
<b>2008-2009</b>	16	192	\$ 14,016	\$ 230,899	6%
<b>2009-2010</b>	20	191	\$ 15,700	\$ 222,105	7%
<b>2010-2011</b>	40	303	\$ 26,664	\$ 300,754	9%
<b>5 Yr. Total</b>	151	1994	\$ 141,261	\$ 682,676	



## Dual Enrollment

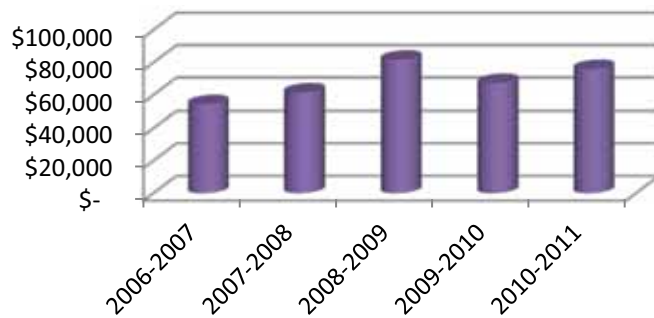
### Lafayette

	# of Students	Credit hours	County Value	Total NFCC DE Value	% Total DE Value
<b>2006-2007</b>	24	153	\$ 10,067	\$ 241,481	4%
<b>2007-2008</b>	13	122	\$ 8,027	\$ 210,296	4%
<b>2008-2009</b>	19	200	\$ 14,600	\$ 230,899	6%
<b>2009-2010</b>	27	226	\$ 18,577	\$ 222,105	8%
<b>2010-2011</b>	33	266	\$ 23,408	\$ 300,754	8%
<b>5 Yr. Total</b>	116	967	\$ 74,679	\$ 682,676	



### Madison

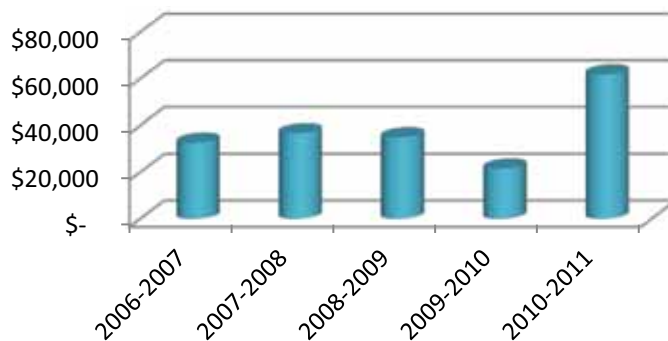
	# of Students	Credit hours	County Value	Total NFCC DE Value	% Total DE Value
<b>2006-2007</b>	80	821	\$ 54,022	\$ 241,481	22%
<b>2007-2008</b>	83	932	\$ 61,325	\$ 210,296	29%
<b>2008-2009</b>	85	1117	\$ 81,541	\$ 230,899	35%
<b>2009-2010</b>	73	817	\$ 67,157	\$ 222,105	30%
<b>2010-2011</b>	65	861	\$ 75,768	\$ 300,754	25%
<b>5 Yr. Total</b>	386	4548	\$ 339,813	\$ 682,676	



## Dual Enrollment

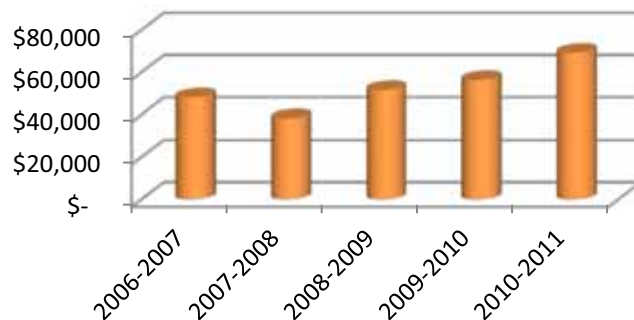
### Suwannee

	# of Students	Credit hours	County Value	Total NFCC DE Value	% Total DE Value
<b>2006-2007</b>	52	496	\$ 32,637	\$ 241,481	14%
<b>2007-2008</b>	51	558	\$ 36,716	\$ 210,296	17%
<b>2008-2009</b>	44	479	\$ 34,967	\$ 230,899	15%
<b>2009-2010</b>	32	262	\$ 21,536	\$ 222,105	10%
<b>2010-2011</b>	64	702	\$ 61,776	\$ 300,754	21%
<b>5 Yr. Total</b>	243	2497	\$ 187,632	\$ 682,676	



### Taylor

	# of Students	Credit hours	County Value	Total NFCC DE Value	% Total DE Value
<b>2006-2007</b>	55	730	\$ 48,034	\$ 241,481	20%
<b>2007-2008</b>	52	580	\$ 38,164	\$ 210,296	18%
<b>2008-2009</b>	56	706	\$ 51,538	\$ 230,899	22%
<b>2009-2010</b>	69	684	\$ 56,225	\$ 222,105	25%
<b>2010-2011</b>	67	786	\$ 69,138	\$ 300,754	23%
<b>5 Yr. Total</b>	299	3486	\$ 263,099	\$ 682,676	





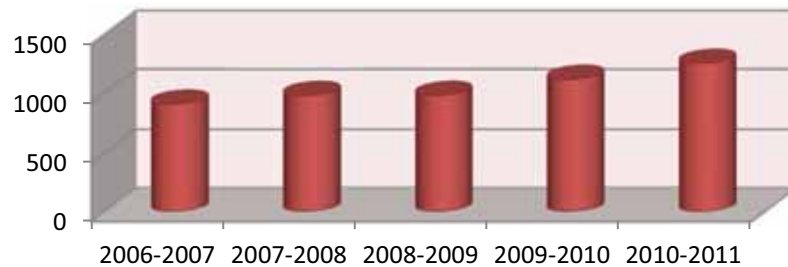
**FINANCIAL AID**



# Section 5: Financial Aid

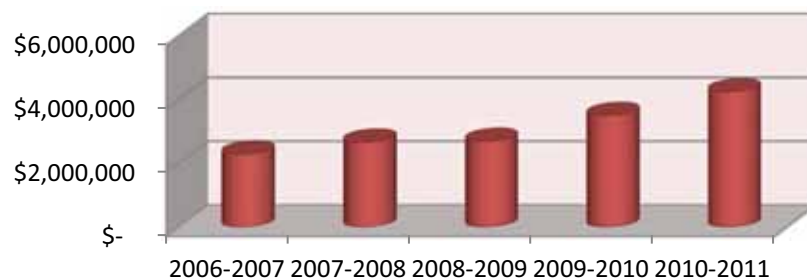
## Number of Financial Aid Awards (2006-2011)

<b>2006-2007</b>	905
<b>2007-2008</b>	979
<b>2008-2009</b>	980
<b>2009-2010</b>	1117
<b>2010-2011</b>	1253



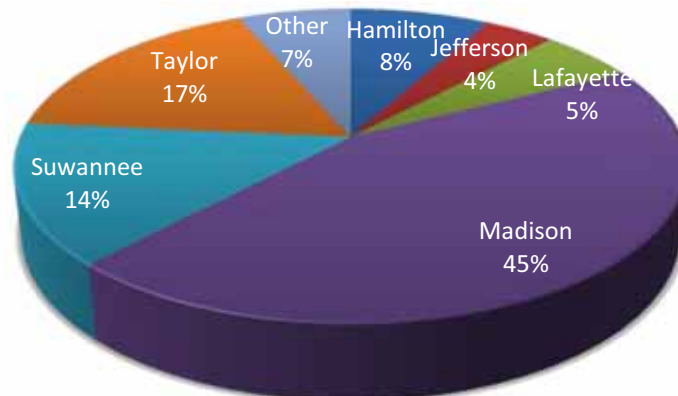
## Dollar Amount of Financial Aid Awards (2006-2011)

<b>2006-2007</b>	\$ 2,290,129
<b>2007-2008</b>	\$ 2,664,624
<b>2008-2009</b>	\$ 2,691,770
<b>2009-2010</b>	\$ 3,501,192
<b>2010-2011</b>	\$ 4,243,147



## Distribution by County (2010-2011)

<b>Hamilton</b>	\$ 341,311
<b>Jefferson</b>	\$ 168,150
<b>Lafayette</b>	\$ 231,694
<b>Madison</b>	\$ 1,889,842
<b>Suwannee</b>	\$ 612,692
<b>Taylor</b>	\$ 722,461
<b>Other</b>	\$ 276,997

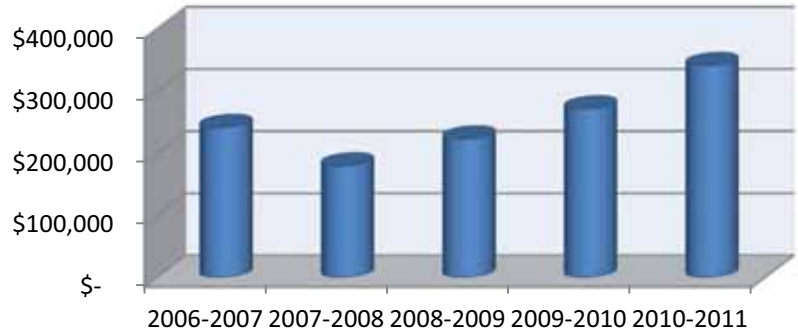


# Financial Aid

## Awards by County (In-District Only)

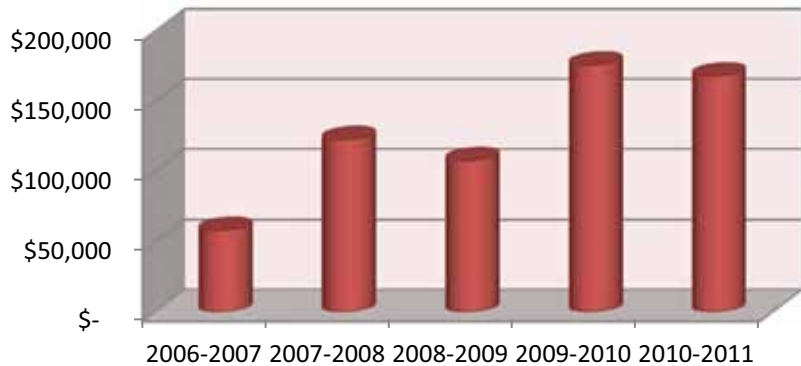
### Hamilton

	# of Students	Awards Paid
2006-2007	74	\$ 241,536
2007-2008	66	\$ 179,772
2008-2009	77	\$ 223,123
2009-2010	91	\$ 271,452
2010-2011	100	\$ 341,311



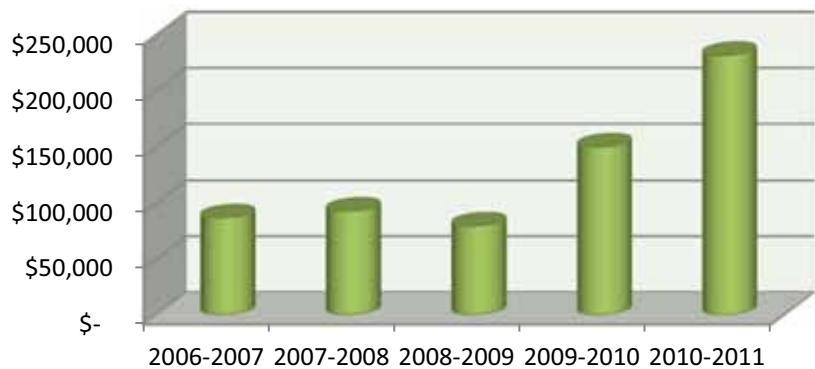
### Jefferson

	# of Students	Awards Paid
2006-2007	35	\$ 58,354
2007-2008	49	\$ 122,667
2008-2009	49	\$ 107,554
2009-2010	60	\$ 175,920
2010-2011	58	\$ 168,150



### Lafayette

	# of Students	Awards Paid
2006-2007	41	\$ 86,913
2007-2008	42	\$ 93,005
2008-2009	32	\$ 79,692
2009-2010	46	\$ 149,573
2010-2011	68	\$ 231,694

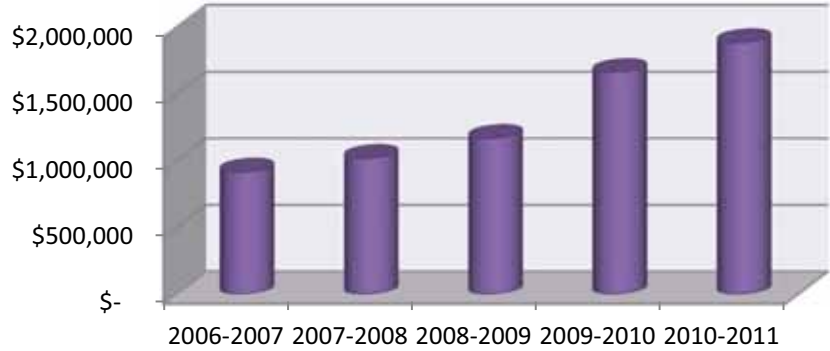


# Financial Aid

## Awards by County

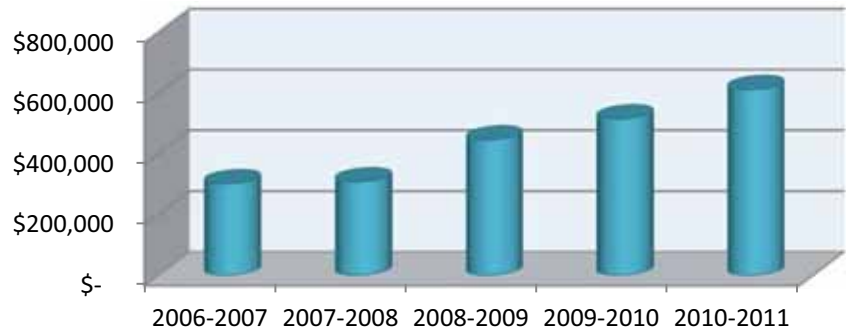
### Madison

	# of Students	Awards Paid
2006-2007	388	\$ 919,160
2007-2008	395	\$ 1,021,526
2008-2009	428	\$ 1,171,335
2009-2010	516	\$ 1,666,185
2010-2011	539	\$ 1,889,842



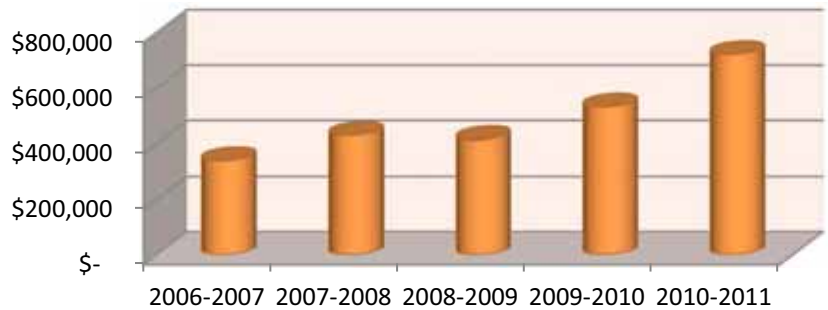
### Suwannee

	# of Students	Awards Paid
2006-2007	129	\$ 302,995
2007-2008	129	\$ 309,210
2008-2009	154	\$ 446,688
2009-2010	164	\$ 515,958
2010-2011	177	\$ 612,692



### Taylor

	# of Students	Awards Paid
2006-2007	156	\$ 341,690
2007-2008	179	\$ 429,934
2008-2009	166	\$ 415,456
2009-2010	169	\$ 532,456
2010-2011	216	\$ 722,461



HAMILTON LIBRARY



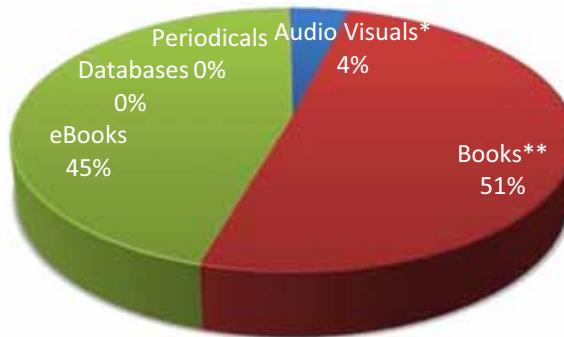
**NFCC LIBRARY**

# Section 6: NFCC Library

---

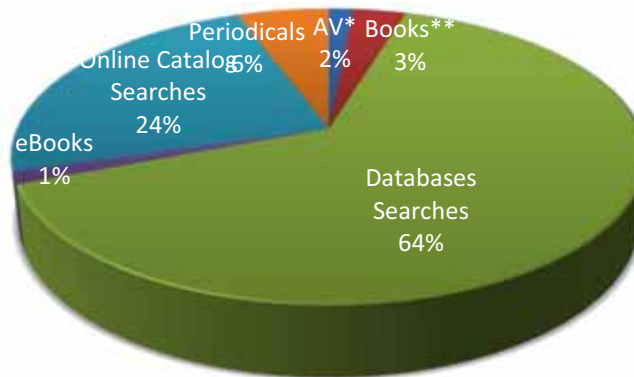
## 2010-2011 Collections

<b>Audio Visuals*</b>	2,628
<b>Books**</b>	33,836
<b>eBooks</b>	30,327
<b>Electronic Databases</b>	135
<b>Periodicals</b>	25



## 2010-2011 Circulation Statistics

<b>Audio Visuals*</b>	1,954
<b>Books**</b>	4,109
<b>Databases Searches</b>	82,972
<b>eBooks</b>	1,714
<b>Online Catalog Searches</b>	30,898
<b>Periodicals</b>	7,208



\*Audio visuals include audiocassettes, DVDs, CDs, and video tapes

\*\*Books includes titles from circulation and reference collections

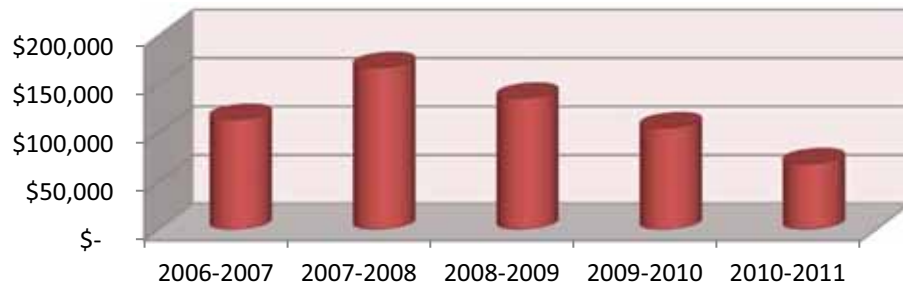


**NFCC FOUNDATION**

# Section 7: NFCC Foundation

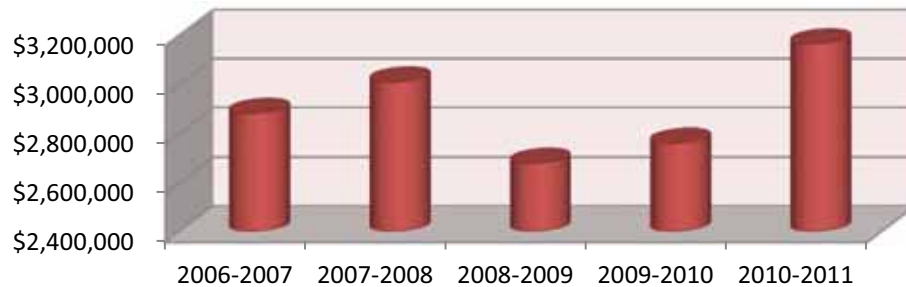
## Scholarships Awarded (2006-2011)

2006-2007	2007-2008	2008-2009	2009-2010	2010-2011
\$ 113,529	\$ 167,085	\$ 135,448	\$ 104,843	\$ 67,830



## Foundation Assets (2006-2011)

2006-2007	2007-2008	2008-2009	2009-2010	2010-2011
\$ 2,880,106	\$ 3,008,821	\$ 2,679,205	\$ 2,760,800	\$ 3,164,631





**PERSONNEL**

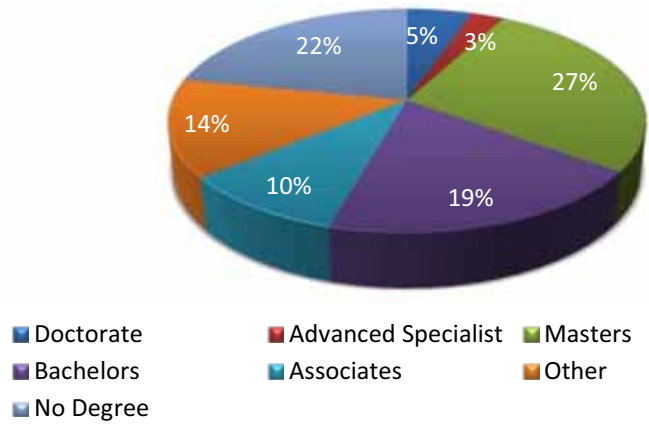


# Section 8: Personnel

## Full-Time Employees (2010-2011)

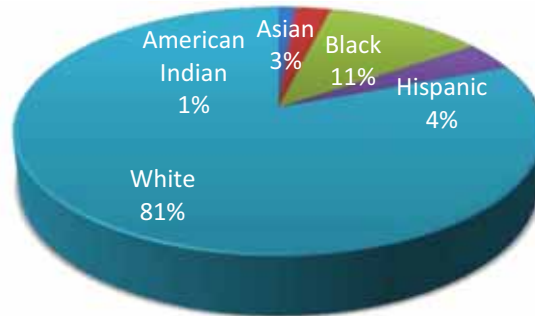
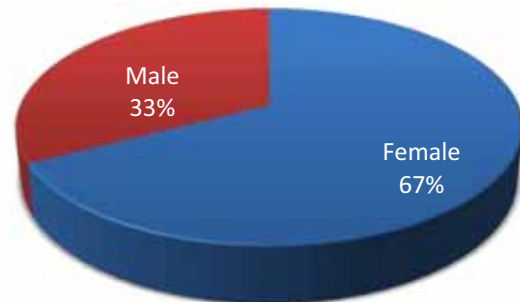
### By Degree

Doctorate	6
Advanced Specialist	3
Masters	31
Bachelors	22
Associates	11
Other	16
No Degree	25



### By Gender & Ethnicity

	Female	Male
American Indian	1	2
Asian	2	1
Black	9	2
Hispanic	3	2



WELCOME NEW  
Sentinels!

GO!

Let the journey  
begin.



COMMUNITY COLLEGE

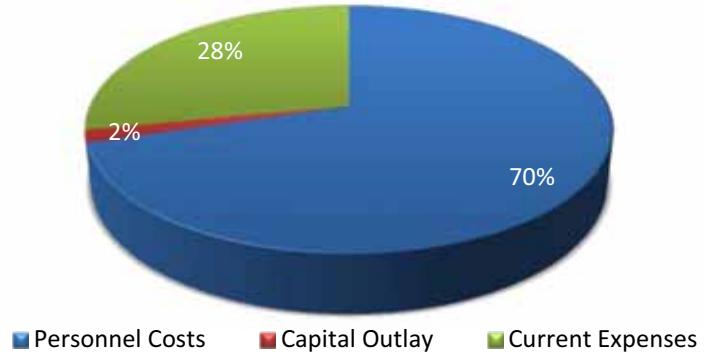
**FINANCES**

# Section 9: Finances

## General Fund Budget (2010-2011)

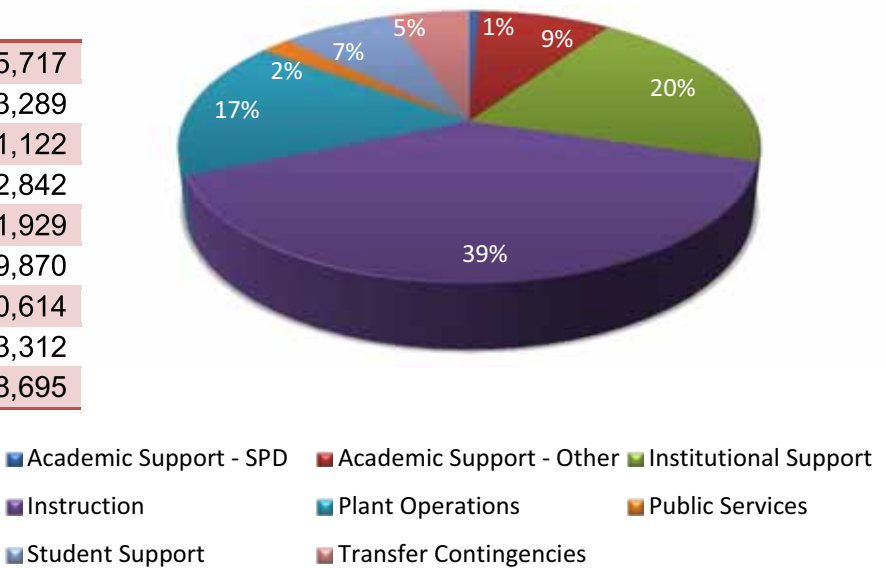
### By Object

<b>Personnel Costs</b>	\$ 6,077,830
<b>Capital Outlay</b>	\$ 142,335
<b>Current Expenses</b>	\$ 2,428,530
<b>Total</b>	\$ 8,648,695



### By Organizational Unit

<b>Academic Support - SPD</b>	\$ 55,717
<b>Academic Support - Other</b>	\$ 763,289
<b>Institutional Support</b>	\$ 1,751,122
<b>Instruction</b>	\$ 3,362,842
<b>Plant Operations</b>	\$ 1,441,929
<b>Public Services</b>	\$ 169,870
<b>Student Support</b>	\$ 640,614
<b>Transfer Contingencies</b>	\$ 463,312
<b>Total</b>	\$ 8,648,695

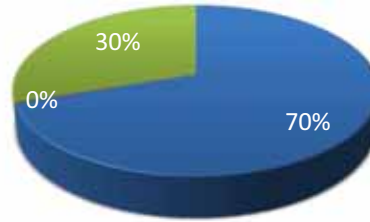


# Finances

## General Fund Expenditures (2010-2011)

### By Object

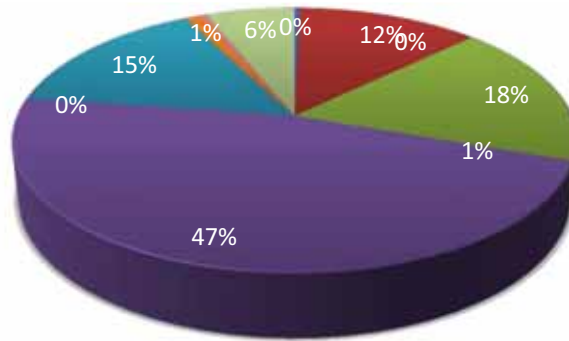
<b>Personnel Costs</b>	\$ 5,783,839
<b>Capital Outlay</b>	\$ 716,098
<b>Current Expenses</b>	\$ 2,583,672
<b>Total</b>	\$ 9,083,609



■ Personnel Costs   ■ Capital Outlay   ■ Current Expenses

### By Organizational Unit

<b>Academic Support - SPD</b>	\$ 33,634
<b>Academic Support - Other</b>	\$ 1,131,477
<b>Institutional Support</b>	\$ 1,593,586
<b>Instruction</b>	\$ 4,256,721
<b>Plant Operations</b>	\$ 1,381,541
<b>Public Services</b>	\$ 93,802
<b>Research</b>	\$ -
<b>Student Aid</b>	\$ 44,375
<b>Student Support</b>	\$ 546,313
<b>Transfer Contingencies</b>	\$ 2,160
<b>Total</b>	\$ 9,083,609



■ Academic Support - SPD   ■ Academic Support - Other   ■ Institutional Support  
 ■ Instruction   ■ Plant Operations   ■ Public Services  
 ■ Research   ■ Student Aid   ■ Student Support  
 ■ Transfer Contingencies



**DISTRICT DATA**

## Section 9: District Data

### Hamilton County (2010 Census Data)

	County	FL
Population, 2010	14,799	18,801,310
Persons under 18, 2000 to 2010	21%	21.9%
White, 2010	59.8%	75%
Black, 2010	34.5%	16%
American Indian & Alaska Native, 2010	0.6%	0.4%
Asian, 2010	0.5%	2.4%
Native Hawaiian and Other Pacific Islander, 2010		0.1%
Two more races, 2010	1.7%	2.4%
Hispanic or Latino, 2010	8.8%	22.5%
White not Hispanic, 2010	54.9%	57.9%
High School Graduates, % of persons 25+ 2005-2009	70.7%	84.9%
Bachelor's degree or higher, % of persons 25+ 2005-2009	8.5%	25.6%
Per capita money income in past 12 months, 2005-2009	\$14,716	\$26,503
Person's below poverty level, 2009	28.5%	15.0%
Land area, square miles	514.86	53926.82



## District Data

### Jefferson County (2010 Census Data)

	County	FL
Population, 2010	14,761	18,801,310
Persons under 18, 2000 to 2010	19%	21.9%
White, 2010	60.40%	75%
Black, 2010	36.20%	16%
American Indian & Alaska Native, 2010	0.30%	0.40%
Asian, 2010	0.40%	2.40%
Native Hawaiian and Other Pacific Islander, 2010		0.10%
Two more races, 2010	1.30%	2.40%
Hispanic or Latino, 2010	3.70%	22.50%
White not Hispanic, 2010	87.70%	57.90%
High School Graduates, % of persons 25+ 2005-2009	81.60%	84.90%
Bachelor's degree or higher, % of persons 25+ 2005-2009	17.30%	25.60%
Per capita money income in past 12 months, 2005-2009	\$20,323	\$26,503.00
Person's below poverty level, 2009	19.10%	15%
Land area, square miles	597.74	53926.82



## District Data

---

### Lafayette County (2010 Census Data)

	County	FL
Population, 2010	8,870	18,801,310
Persons under 18, 2000 to 2010	19.7%	21.9%
White, 2010	77.4%	75.0%
Black, 2010	15.9%	16.0%
American Indian & Alaska Native, 2010	0.4%	0.4%
Asian, 2010	0.1%	2.4%
Native Hawaiian and Other Pacific Islander, 2010		0.1%
Two more races, 2010	1.4%	2.4%
Hispanic or Latino, 2010	12.1%	22.5%
White not Hispanic, 2010	70.6%	57.9%
High School Graduates, % of persons 25+ 2005-2009	76.2%	84.9%
Bachelor's degree or higher, % of persons 25+ 2005-2009	6.7%	25.6%
Per capita money income in past 12 months, 2005-2009	\$16,575	\$26,503.00
Person's below poverty level, 2009	34.6%	15.0%
Land area, square miles	542.84	53926.82





## District Data

### Madison County (2010 Census Data)

	County	FL
Population, 2010	19,224	18,801,310
Persons under 18, 2000 to 2010	22.3%	21.9%
White, 2010	57.6%	75%
Black, 2010	38.8%	16%
American Indian & Alaska Native, 2010	0.5%	0.4%
Asian, 2010	0.2%	2.4%
Native Hawaiian and Other Pacific Islander, 2010		0.1%
Two more races, 2010	1.3%	2.4%
Hispanic or Latino, 2010	4.7%	22.5%
White not Hispanic, 2010	55.0%	57.9%
High School Graduates, % of persons 25+ 2005-2009	74.4%	84.9%
Bachelor's degree or higher, % of persons 25+ 2005-2009	11.1%	25.6%
Per capita money income in past 12 months, 2005-2009	\$16,486	\$26,503.00
Person's below poverty level, 2009	26.2%	15.0%
Land area, square miles	691.79	53926.82



## District Data

---

### Suwannee County (2010 Census Data)

	<b>County</b>	<b>FL</b>
<b>Population, 2010</b>	41,551	18,801,310
<b>Persons under 18, 2000 to 2010</b>	22.7%	21.9%
<b>White, 2010</b>	82.5%	75%
<b>Black, 2010</b>	11.4%	16%
<b>American Indian &amp; Alaska Native, 2010</b>	0.5%	0.4%
<b>Asian, 2010</b>	0.5%	2.4%
<b>Native Hawaiian and Other Pacific Islander, 2010</b>		0.1%
<b>Two more races, 2010</b>	1.9%	2.4%
<b>Hispanic or Latino, 2010</b>	8.7%	22.5%
<b>White not Hispanic, 2010</b>	77.7%	57.9%
<b>High School Graduates, % of persons 25+ 2005-2009</b>	77.6%	84.9%
<b>Bachelor's degree or higher, % of persons 25+ 2005-2009</b>	8.8%	25.6%
<b>Per capita money income in past 12 months, 2005-2009</b>	\$17,798	\$26,503.00
<b>Person's below poverty level, 2009</b>	19.7%	15.0%
<b>Land area, square miles</b>	687.64	53926.82



## District Data

### Taylor County (2010 Census Data)

	County	FL
Population, 2010	22,570	18,801,310
Persons under 18, 2000 to 2010	20.6%	21.9%
White, 2010	75.2%	75%
Black, 2010	20.7%	16%
American Indian & Alaska Native, 2010	0.8%	0.4%
Asian, 2010	0.7%	2.4%
Native Hawaiian and Other Pacific Islander, 2010		0.1%
Two more races, 2010	1.7%	2.4%
Hispanic or Latino, 2010	3.4%	22.5%
White not Hispanic, 2010	73.0%	57.9%
High School Graduates, % of persons 25+ 2005-2009	79.9%	84.9%
Bachelor's degree or higher, % of persons 25+ 2005-2009	10.7%	25.6%
Per capita money income in past 12 months, 2005-2009	\$17,248	\$26,503.00
Person's below poverty level, 2009	23.8%	15.0%
Land area, square miles	1,041.91	53,926.82



# Glossary of Terms

**Academic Year** – The fall, spring, and summer terms of overlapping calendar years. For example, fall 2006, spring 2007, and summer 2007 comprise the 2006-2007 academic year. This differs from the reporting year, which begins with summer and ends with spring.

**Accreditation** – Certification by an official review board that specific requirements have been met. NFCC is accredited by the Southern Association of Colleges and Schools (SACS).

**Adult Basic Education (ABE)** – Education for adults to help them attain basic or functional literacy skills.

**Advanced & Professional (A&P)** – A program area with courses designed to provide the first two years of course work leading to an advanced or professional degree (bachelors, masters, etc.). It includes general education and specialized lower-division courses necessary to transfer into a degree program.

**Associate in Arts (AA)** – A program of instruction that consists of courses offered to freshmen and sophomores. This degree will transfer to the state university system and is awarded when a student completes 60 hours of college credit along with specified performance requirements.

**Associate in Applied Science (AAS)** – A program of instruction with courses to prepare students for entry into employment. These courses are usually not transferrable to a baccalaureate program.

**Associate in Science (AS)** – A program of instruction with courses to prepare students for entry into employment or college transfer. These courses are more likely transferrable to a baccalaureate program than the AAS.

**College Credit** – The type of credit assigned to courses that are part of an organized and specified college degree or program.

**Credit Hour** – The number of contact hours for a course.

**Dual Enrollment** – Enrollment in two institutions at the same time, such as a college and high school, which allows students to earn both high school and college credit simultaneously.

**Duplicated Headcount** – A headcount measure by which students may be counted in more than one category. This measure usually describes the number of seats taken across multiple courses.

**First Time in College (FTIC)** – A student attending college for the first time with no prior credit toward a degree or formal award.

**Full-time equivalency (FTE)** – A measure to describe various cohorts of students based on the number of student credit hours generated. FTE is computed by dividing the total number of credit or clock hours by 30.

**Full-time Student** – A student who is registered for 12 or more credit hours in the fall and spring semesters or four or more credit hours in the summer semester.

**General Education Development (GED)Test** – A measure designed to provide an opportunity for adults who have not graduated from high school to earn a State of Florida High School diploma by measuring the major academic skills and knowledge associated with a high school program of study.

**Part-time Student** – A student who is registered for less than 12 credit hours in the fall and spring terms or fewer than four credit hours in the summer term.

**Postsecondary Adult Vocational Program (PSAV)** – Job preparatory programs through which a student may receive a vocational certificate upon completion of instruction.

**Postsecondary Vocational (PSV)** – Vocational education for students who have left or completed high school and who are enrolled in an organized program of study for which credit is given toward an associate degree.

**Reporting Year** – The summer, fall, and spring terms of overlapping calendar years. For example, summer 2006, fall 2007, and spring 2007 comprise the 2006-2007 reporting year. This differs from the academic year, which begins with fall and ends with summer.

**Returning Students** – Students enrolled for the current term who were also enrolled in a prior term at the College.

**Unduplicated Headcount** – A headcount measure by which students are counted in only one category.

**Vocational Certificate** – The award for satisfactory completion of a program of study designed to prepare students for entry into an occupation.

**Workforce Education Program** – Training and/or retraining for adults who are out of school and already in the workforce.