

North Florida Community College



FACT BOOK

2006-2007

Prepared by
The NFCC Office of
Institutional Effectiveness, Research, & Planning

Construction of the new NFCC Science Building, pictured above, was completed in summer 2007. The 14,000 square foot building is equipped with the latest in technology.

Forward



The 2007 NFCC Fact Book is a compilation of information about North Florida Community College including student, financial, and personnel data. Information was gathered from a variety of sources such as state publications and agencies and the NFCC database. Every effort has been made to ensure timely and accurate information.

We hope you will use this publication on a continual basis and welcome feedback and suggestions towards this effort. The degree to which people find the Fact Book informative and useful will be its principal measure of success.

Our sincere thanks are extended to the many people throughout the College who have offered their time, assistance, and patience toward this effort.

The Office of Institutional Effectiveness, Research, Planning & Technology

<http://www.nfcc.edu/institiresearch/home.html>

Table of Contents



Enrollment

Student Data	3
By Degree.....	4
By County.....	6
By Gender	7
By Race.....	8
By Time of Day	11

Student Success

Degrees Awarded.....	12
Student Transfer Data.....	13
Grade Distribution	14

Distance Learning

Total Courses and Students	15
Student Demographics	16

Dual Enrollment

Student Information	17
---------------------------	----

Financial Aid

Total Distribution	19
Awards by County.....	20

Other Information

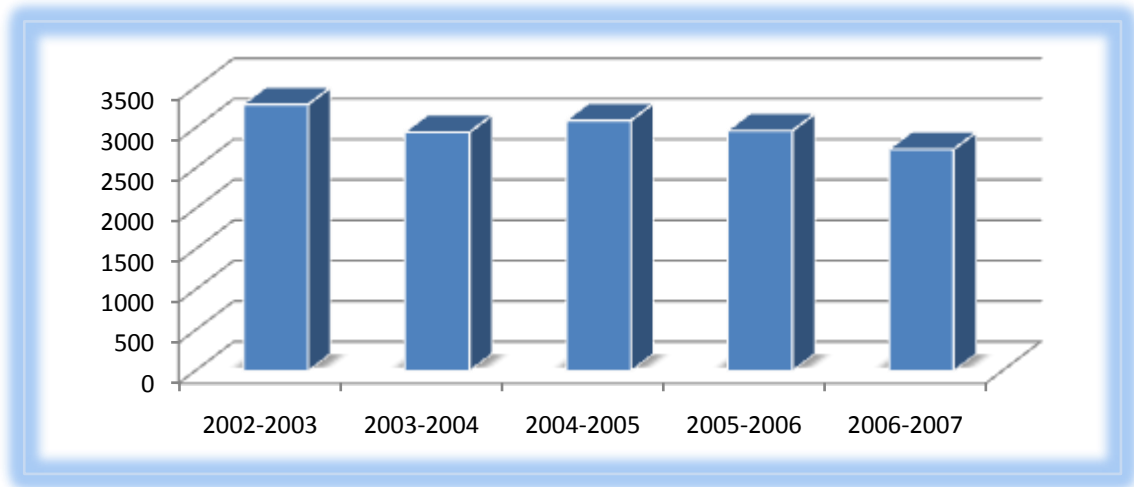
NFCC Library.....	22
NFCC Foundation	23
Personnel	24
Finances	25
Census Data for Service Counties	27
Glossary of Terms	30

Enrollment



Total Students Enrolled by Headcount (2002-2007)

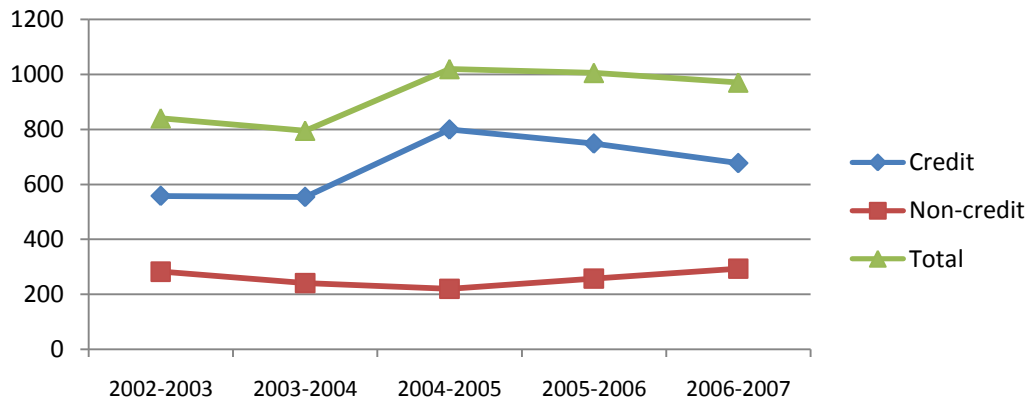
2002-2003	2003-2004	2004-2005	2005-2006	2006-2007
3291	2947	3093	2966	2759



Total Students Enrolled by FTE (2002-2007)

FTE (full-time equivalent) is computed by dividing the total the number of credit or clock hours by 30.

	2002-2003	2003-2004	2004-2005	2005-2006	2006-2007
Credit	558	554	799	748	677
Non-Credit	282	241	220	257	293
Total	840	795	1019	1005	970



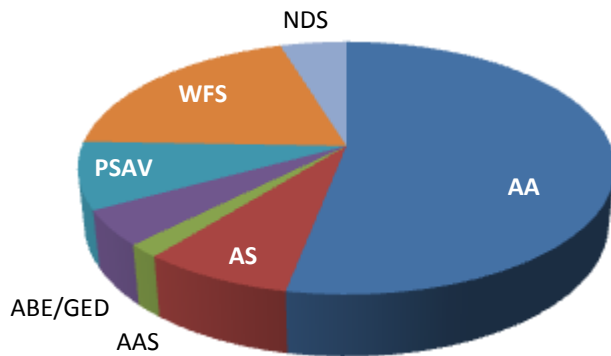
Average class size is 20 students

Enrollment



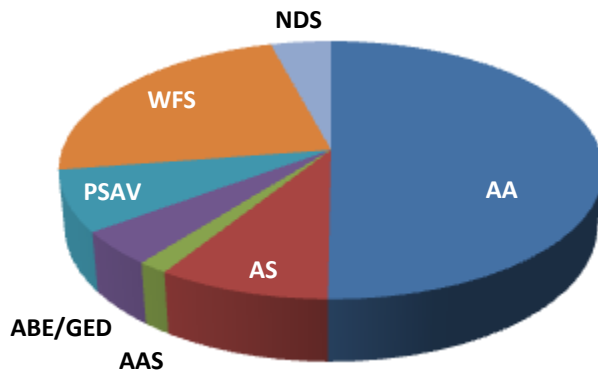
By Degree or Program (2006-2007)

Fall 2006



Degree:		
AA	940	53%
AS	137	8%
AAS	30	2%
ABE/GED	80	5%
PSAV	152	9%
WFS	349	20%
NDS	84	5%
Total	1772	

Spring 2007



Degree:		
AA	831	47%
AS	147	8%
AAS	26	1%
ABE/GED	71	4%
PSAV	127	7%
WFS	386	22%
NDS	69	4%
Total	1657	

Legend of degree or program:

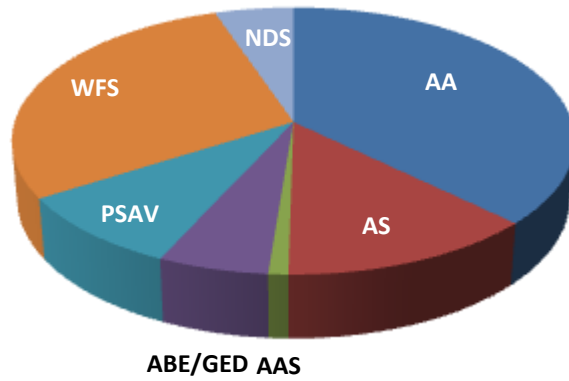
- AA: Associate in Arts
- AS: Associate in Science
- AAS: Associate in Applied Science
- ABE/GED: Adult Basic Education / General Education Diploma
- PSAV: Post-Secondary Adult Vocational Certificate
- WFS: Workforce / Supplemental
- NDS: Non-Degree Seeking (including dual-enrolled)

Enrollment



By Degree or Program (2006-2007)

Summer 2007



Degree:		
AA	374	37%
AS	130	13%
AAS	10	1%
ABE/GED	56	6%
PSAV	91	9%
WFS	290	29%
NDS	52	5%
Total	1003	



NFCC Emergency Medical Technician (EMT) students learn how to administer CPR.

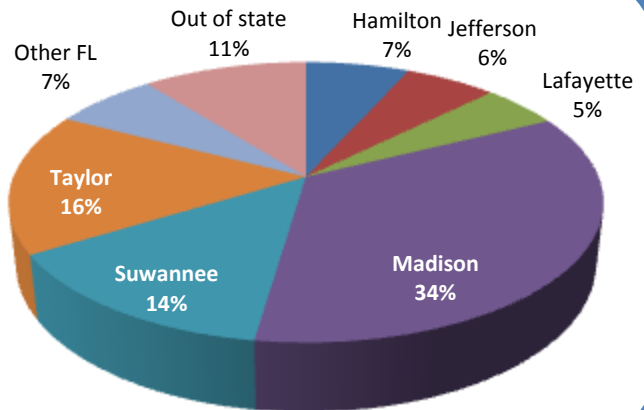
Enrollment



By County (2006-2007)

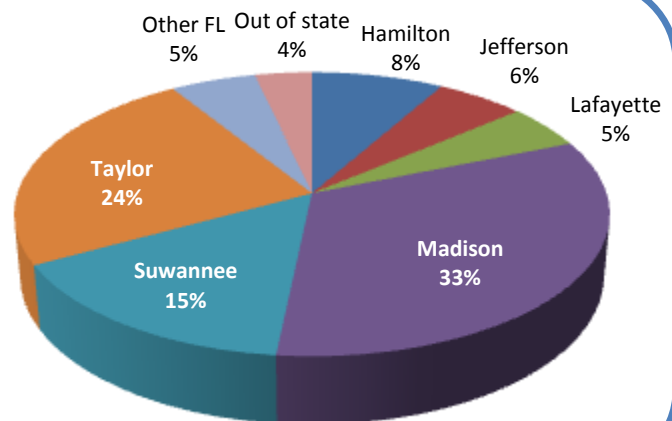
Fall 2006

Hamilton:	119	7%
Jefferson:	105	6%
Lafayette:	89	5%
Madison:	614	35%
Suwannee:	247	14%
Taylor:	290	16%
Other FL:	119	7%
Out of state:	189	11%
Total:	1772	



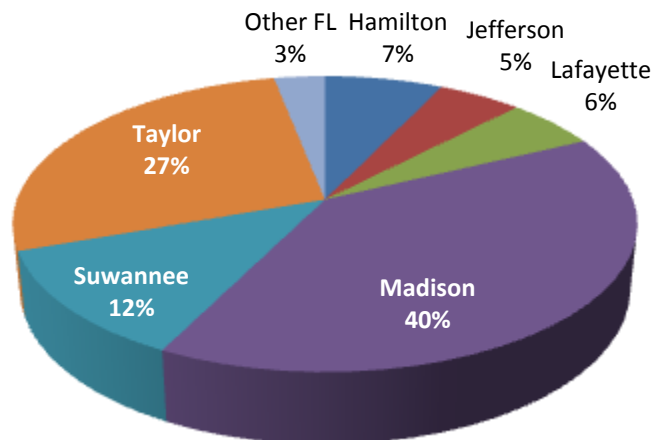
Spring 2007

Hamilton:	137	8%
Jefferson:	92	5%
Lafayette:	83	5%
Madison:	544	31%
Suwannee:	254	14%
Taylor:	399	23%
Other FL:	89	5%
Out of state:	59	3%
Total:	1657	



Summer 2007

Hamilton:	72	7%
Jefferson:	51	5%
Lafayette:	56	6%
Madison:	397	40%
Suwannee:	121	12%
Taylor:	275	27%
Other FL:	31	3%
Out of state:	0	0%
Total:	1003	



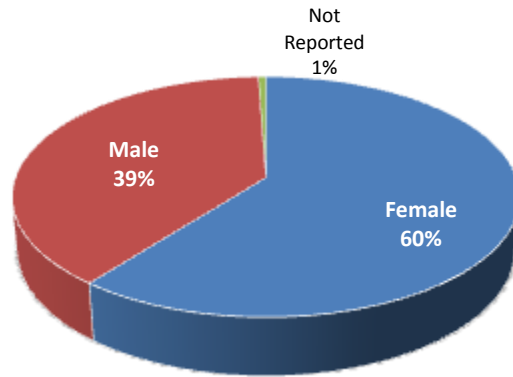
Enrollment



By Gender (2006-2007)

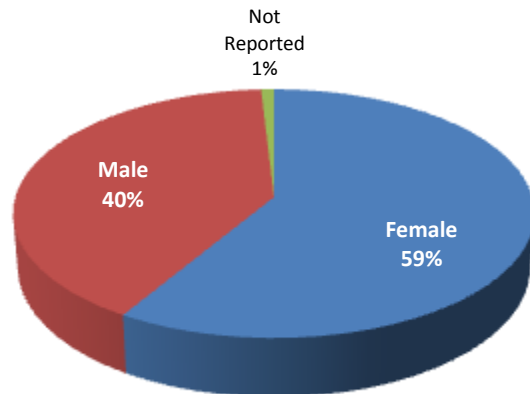
Fall 2006

Female	Male	Not Reported
1073	689	10
61%	39%	1%



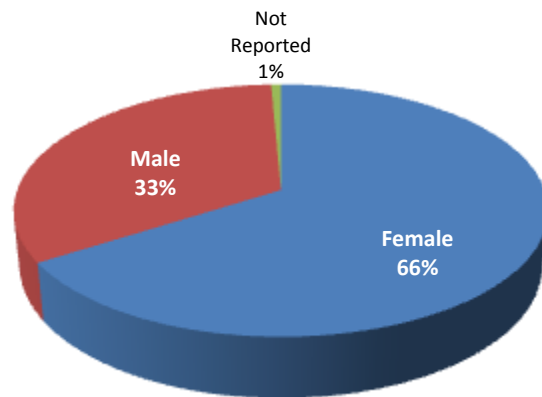
Spring 2007

Female	Male	Not Reported
972	670	15
55%	38%	1%



Summer 2007

Female	Male	Not Reported
661	335	7
66%	33%	1%



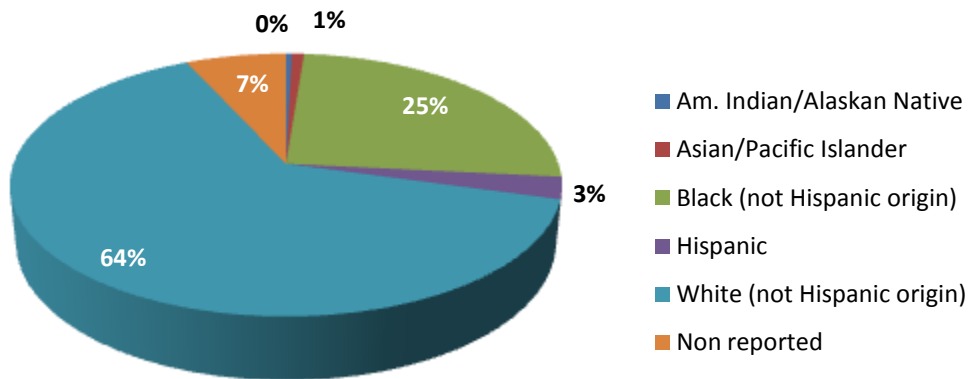
Enrollment



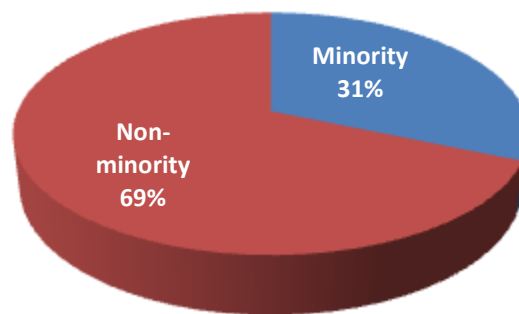
By Race (2006-2007)

Fall 2006

	#	%
Am. Indian/Alaskan Native:	7	> 1%
Asian/Pacific Islander:	15	1%
Black (not Hispanic origin):	449	25%
Hispanic:	48	3%
White (not Hispanic origin):	1131	64%
Non reported:	122	7%
Total:	1772	



Total minorities: 519
 % of minorities: 31%



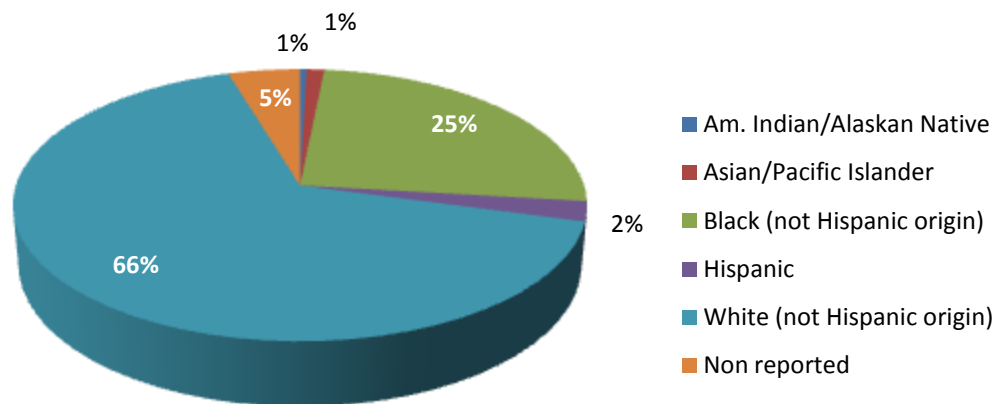
Enrollment



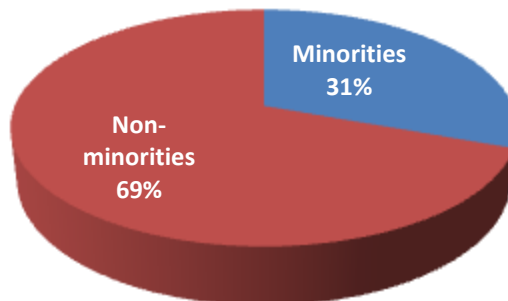
By Race (2006-2007)

Spring 2007

	#	%
Am. Indian/Alaskan Native	7	>1%
Asian/Pacific Islander	19	1%
Black (not Hispanic origin)	419	24%
Hispanic	39	2%
White (not Hispanic origin)	1096	62%
Non reported	77	4%
Total:	1657	



Total minorities: 484
 % of minorities: 31%



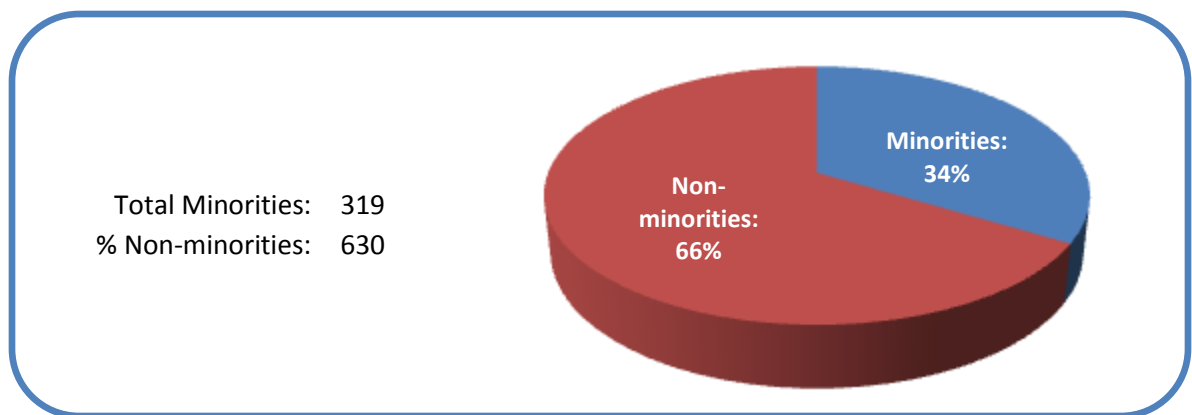
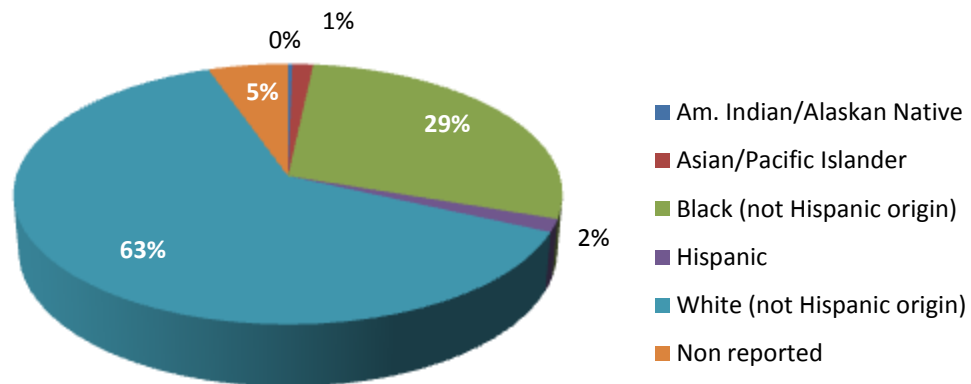
Enrollment



By Race (2006-2007)

Summer 2007

	#	%
Am. Indian/Alaskan Native	3	>1%
Asian/Pacific Islander	14	1%
Black (not Hispanic origin)	286	29%
Hispanic	16	2%
White (not Hispanic origin)	630	63%
Non reported	54	5%
Total:	1003	



Enrollment



Student Schedule by Time of Day

Fall 2006

Time	Monday	Tuesday	Wednesday	Thursday	Friday	Saturday
8:00 – 9:15 a.m.	432	450	421	440	113	80
9:30 – 10:45 a.m.	387	339	387	339	36	0
11:00 – 12:15 p.m.	308	405	308	385	48	0
12:30 – 1:45 p.m.	314	267	294	288	85	0
2:00 – 3:15 p.m.	168	256	152	261	42	0
5:00 p.m. or later	389	463	295	408	0	0

Instructor to student ratio: 15.96



Spring 2007

Time	Monday	Tuesday	Wednesday	Thursday	Friday	Saturday
8:00 – 9:15 a.m.	385	414	380	465	190	103
9:30 – 10:45 a.m.	312	332	312	332	38	0
11:00 – 12:15 p.m.	529	703	529	683	127	0
12:30 – 1:45 p.m.	222	283	250	288	38	10
2:00 – 3:15 p.m.	96	113	92	115	26	11
5:00 p.m. or later	283	304	211	352	4	4

Instructor to student ratio: 16.57

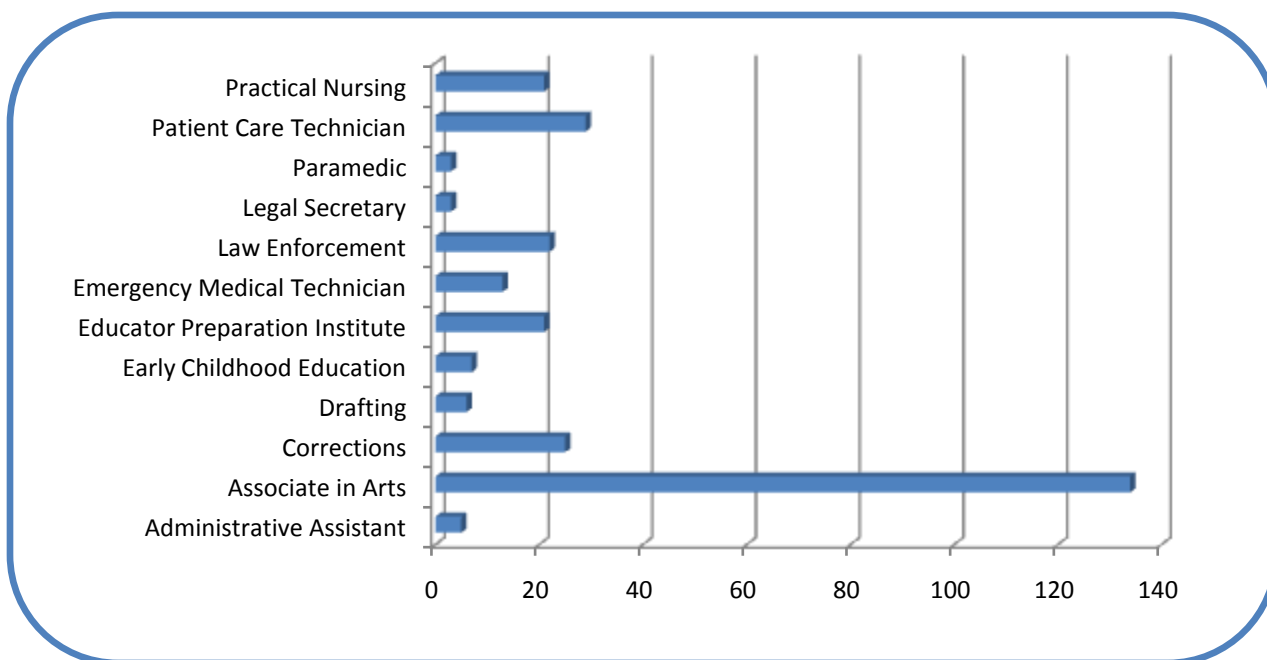
Academic Success



Number of Degrees Awarded (2002-2007)

	2002-2003	2003-2004	2004-2005	2005-2006	2006-2007
Associate in Arts	121	135	157	118	134
Associate in Science	4	4	7	2	0
Associate in Applied Science	9	13	15	5	7
Certificate	203	205	181	140	148
TOTAL	337	357	360	265	289

Graduates by Program (2006-2007)



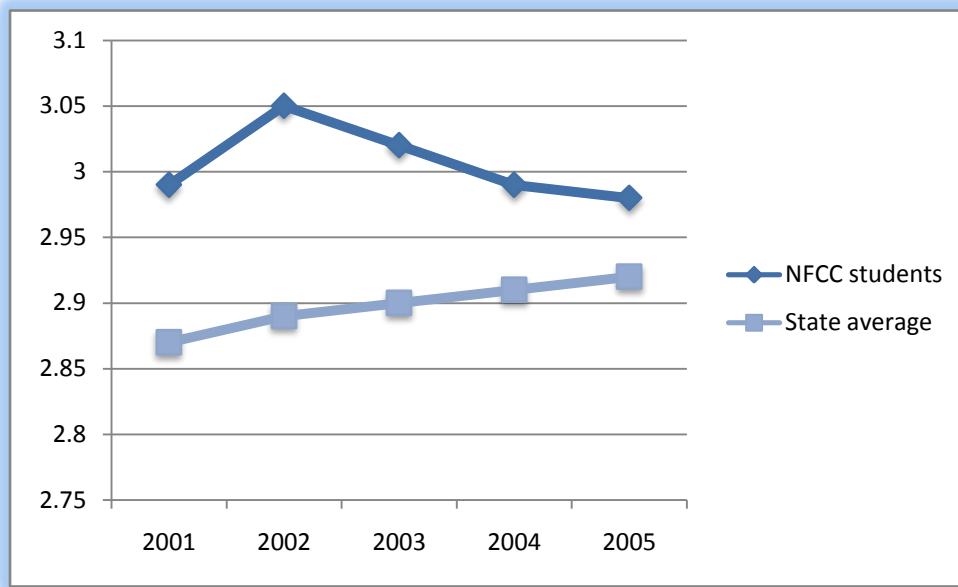
Administrative Assistant	5	Emergency Medical Technician	13
Associate in Arts	134	Law Enforcement	22
Corrections	25	Legal Secretary	3
Drafting	6	Paramedic	3
Early Childhood Education	7	Patient Care Technician	29
Educator Preparation Institute	21	Practical Nursing	21

Academic Success



NFCC Transfer Success (2001-2005)

Mean cumulative grade-point averages for NFCC graduates who transfer to Florida public universities:



	2001	2002	2003	2004	2005
NFCC students	2.99	3.05	3.02	2.99	2.98
State average	2.87	2.89	2.90	2.91	2.92

Data retrieved from <http://www.fldoe.org/arm/cctcmis/pubs/articulation/artic2005>

NFCC students consistently maintain a grade point average higher than the state average when they transfer to universities in Florida

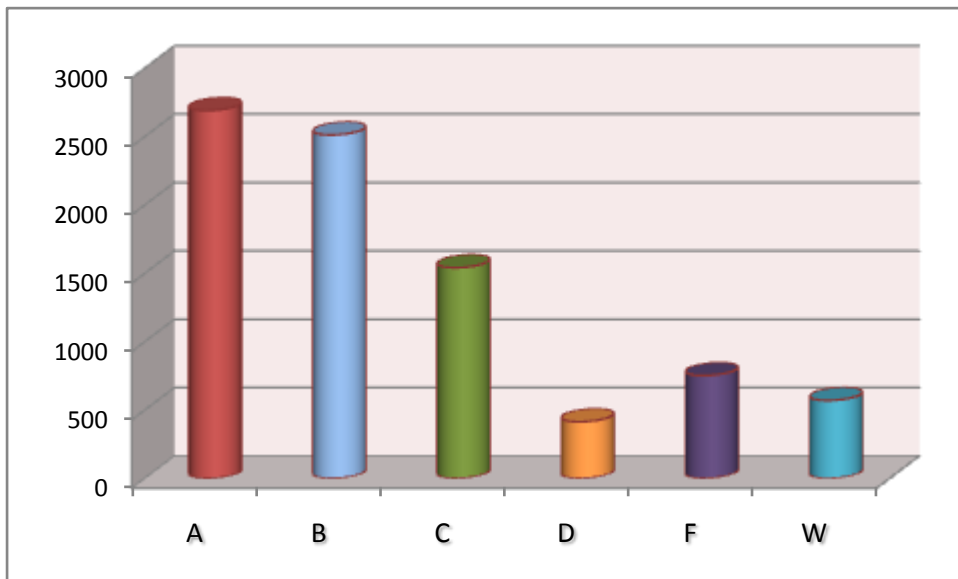


Academic Success



Grade Distribution in NFCC Courses (2006-2007)

A	B	C	D	F	W	Total
2690	2512	1541	414	752	570	8479



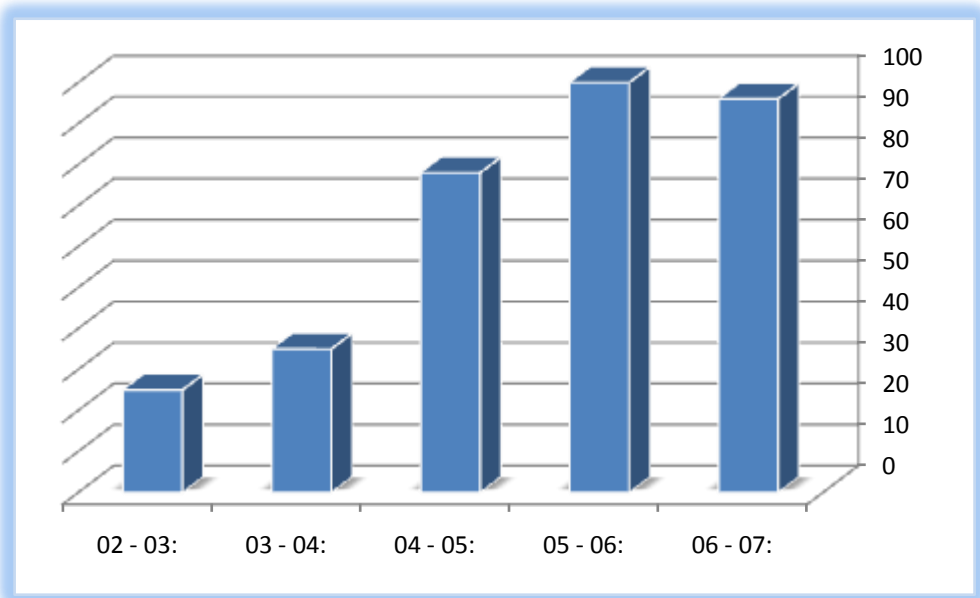
Students frequently gather on campus to study together or to just hang out with friends.

Distance Learning



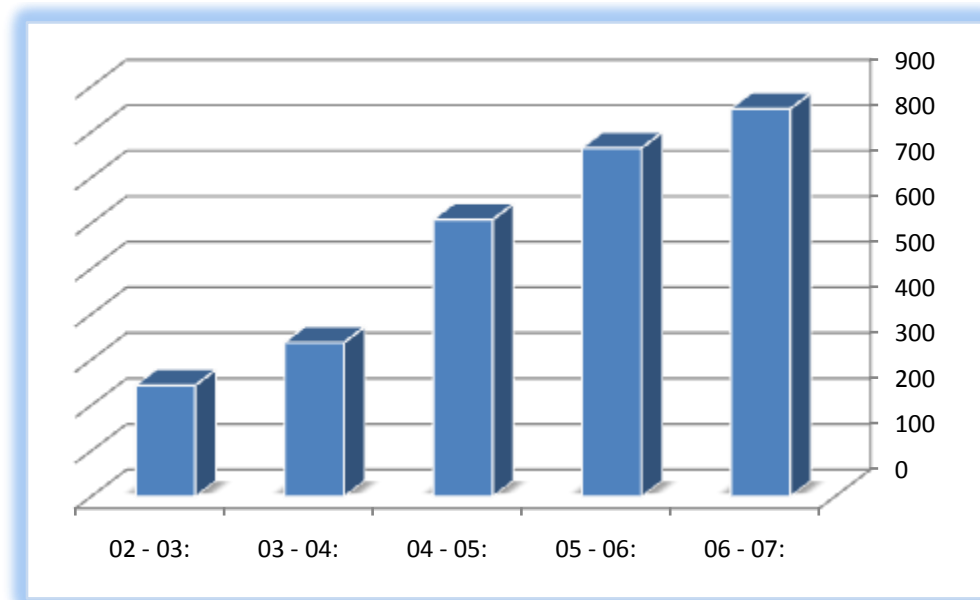
Number of Online Courses (2002-2007):

Year	# of courses
06 - 07:	96
05 - 06:	100
04 - 05:	78
03 - 04:	35
02 - 03:	25



Number of Online Students (2002-2007):

Year	# of students
06 - 07:	851
05 - 06:	765
04 - 05:	608
03 - 04:	338
02 - 03:	244

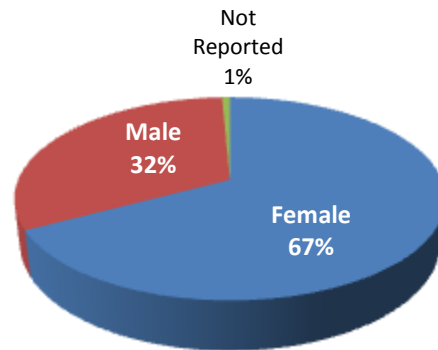


Distance Learning

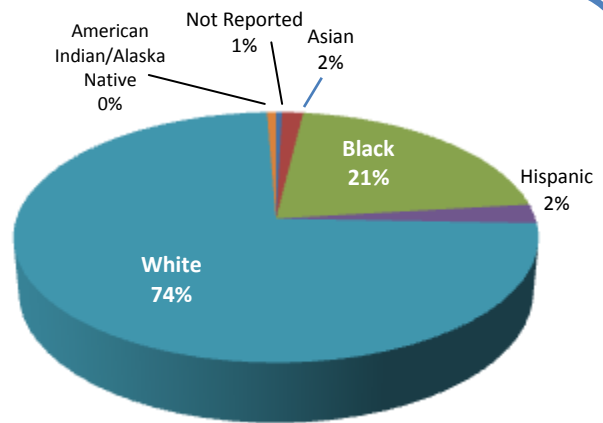


Online Student Demographics (2006-2007)

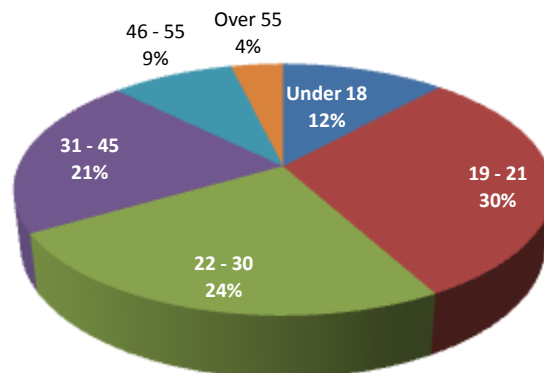
Gender:	
Female	745
Male	356
Not Reported	8



Race:	
American Indian/Alaskan Native	4
Asian	14
Black	198
Hispanic	23
White	689
Not Reported	6



Age:	
Under 18	221
19 - 21	568
22 - 30	462
31 - 45	391
46 - 55	166
Over 55	70

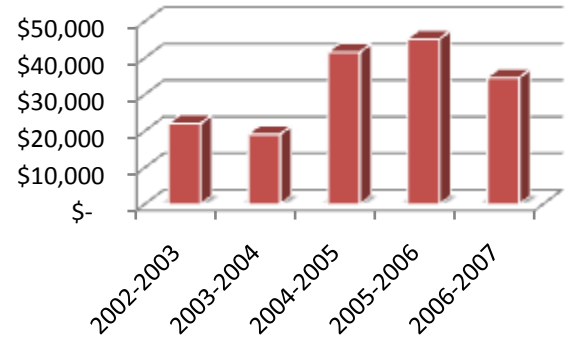


Dual Enrollment

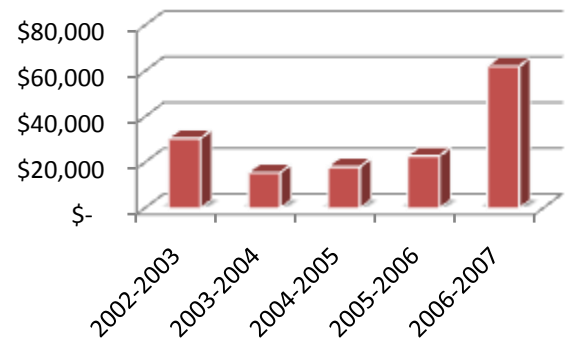


Number and Cost of Dual Enrolled Students (2002-2007)

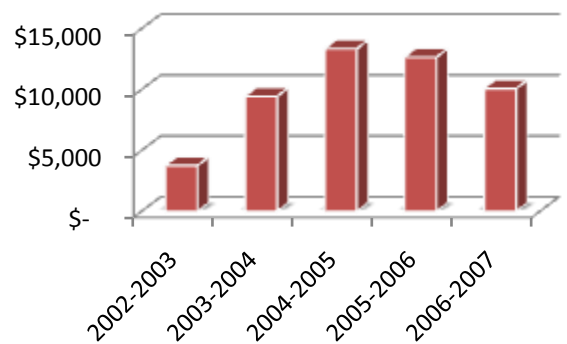
Hamilton					
	No of students	Credit hours	County Value	Total NFCC DE Value	% Total DE Value
2002-2003	29	441	\$22,038	\$182,127	12%
2003-2004	29	365	\$19,126	\$156,797	12%
2004-2005	39	717	\$41,586	\$235,064	18%
2005-2006	39	729	\$45,198	\$215,012	21%
2006-2007	30	526	\$34,606	\$241,481	14%
5-yr. total:	166		\$162,554	\$1,030,481	16%



Jefferson					
	No of students	Credit hours	County Value	Total NFCC DE Value	% Total DE Value
2002-2003	97	611	\$30,568	\$182,127	17%
2003-2004	19	297	\$15,563	\$156,797	10%
2004-2005	24	312	\$18,096	\$235,064	8%
2005-2006	32	369	\$22,878	\$215,012	11%
2006-2007	49	944	\$62,115	\$241,481	26%
5-yr. total:	221		\$149,220	\$1,030,481	14%



Lafayette					
	No of students	Credit hours	County Value	Total NFCC DE Value	% Total DE Value
2002-2003	13	75	\$3,752	\$182,127	2%
2003-2004	13	180	\$9,432	\$156,797	6%
2004-2005	18	230	\$13,340	\$235,064	6%
2005-2006	19	204	\$12,648	\$215,012	6%
2006-2007	24	153	\$10,067	\$241,481	4%
5-yr. total:	87		\$49,239	\$1,030,481	5%

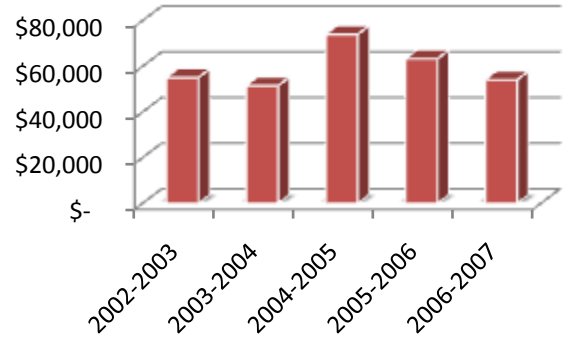


Dual Enrollment

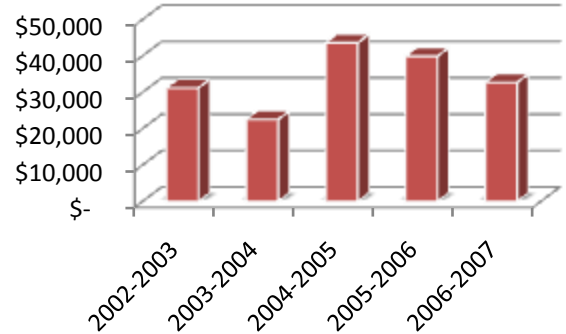


Number and Cost of Dual Enrolled Students (2002-2007)

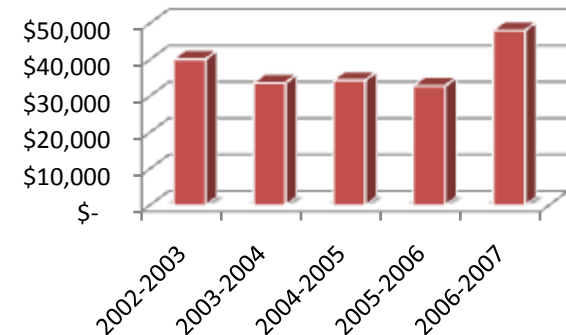
Madison					
	No of students	Credit hours	County Value	Total NFCC DE Value	% Total DE Value
2002-2003	89	1100	\$55,050	\$182,127	30%
2003-2004	76	982	\$51,448	\$156,797	33%
2004-2005	100	1275	\$73,950	\$235,064	31%
2005-2006	85	1020	\$63,240	\$215,012	29%
2006-2007	80	821	\$54,022	\$241,481	22%
5-yr. total:	429		\$297,710	\$1,030,481	29%



Suwannee					
	No of students	Credit hours	County Value	Total NFCC DE Value	% Total DE Value
2002-2003	63	623	\$31,169	\$182,127	17%
2003-2004	50	429	\$22,480	\$156,797	14%
2004-2005	72	751	\$43,558	\$235,064	19%
2005-2006	63	643	\$39,866	\$215,012	19%
2006-2007	52	496	\$32,637	\$241,481	14%
5-yr. total:	300		\$169,710	\$1,030,481	16%



Taylor					
	No of students	Credit hours	County Value	Total NFCC DE Value	% Total DE Value
2002-2003	54	803	\$40,174	\$182,127	22%
2003-2004	46	642	\$33,641	\$156,797	21%
2004-2005	48	593	\$34,390	\$235,064	15%
2005-2006	52	529	\$32,794	\$215,012	15%
2006-2007	55	730	\$48,034	\$241,481	20%
5-yr. total:	255		\$189,033	\$1,030,481	18%

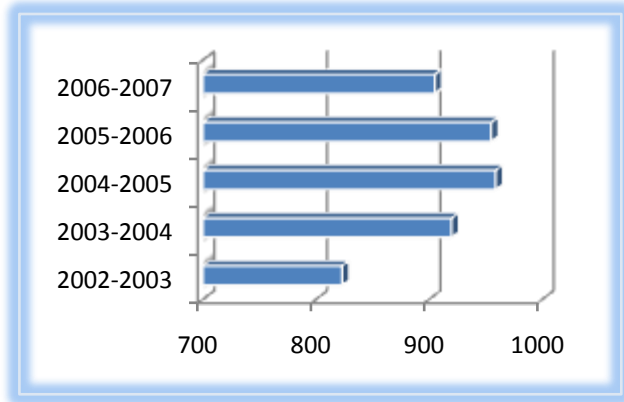


Financial Aid



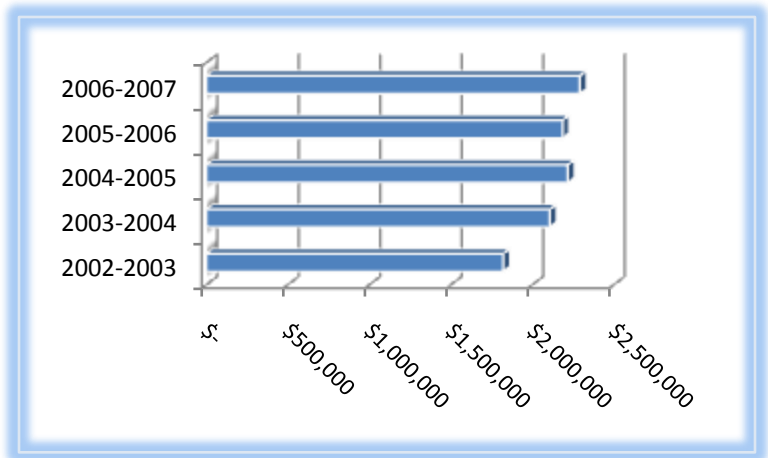
Number of Financial Aid Awards (2002-2007)

2002-2003	823
2003-2004	920
2004-2005	959
2005-2006	955
2006-2007	905



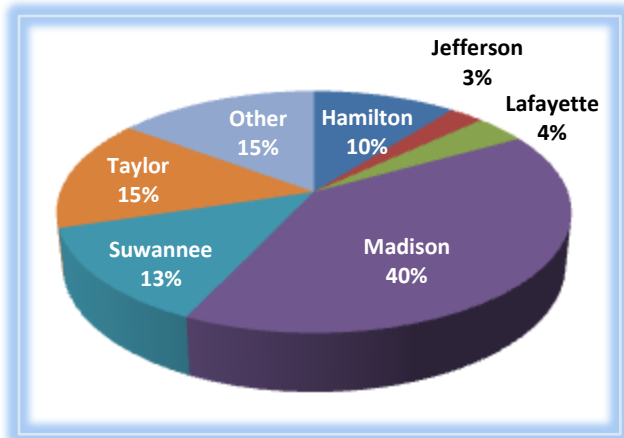
Dollar Amount of Financial Aid Awards (2002-2007)

2002-2003	\$ 1,822,456
2003-2004	\$ 2,107,221
2004-2005	\$ 2,218,090
2005-2006	\$ 2,184,731
2006-2007	\$ 2,290,129



Distribution by County (2006-2007)

Hamilton	\$ 241,536
Jefferson	\$ 58,354
Lafayette	\$ 86,913
Madison	\$ 919,160
Suwannee	\$ 302,995
Taylor	\$ 341,690
Other	\$ 339,481

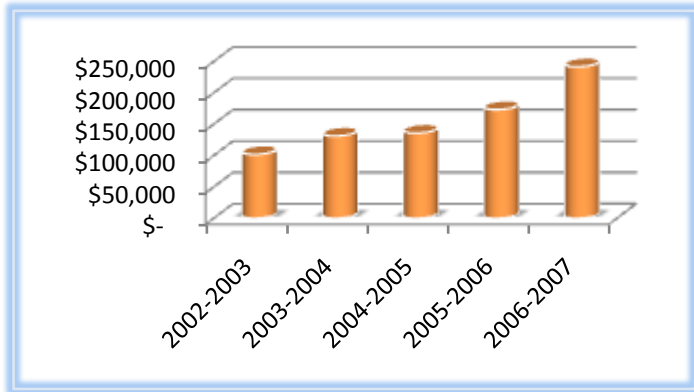


Financial Aid

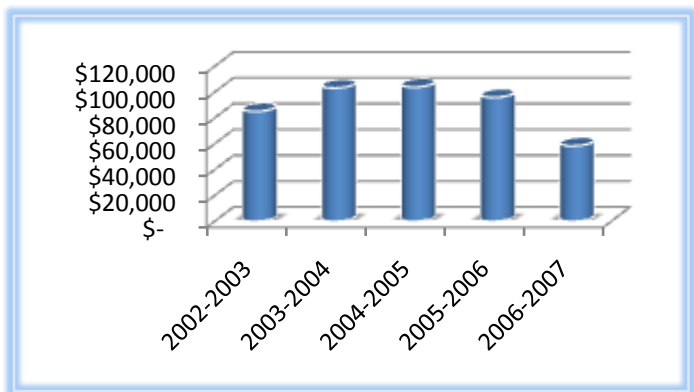


Awards by County (2006-2007)

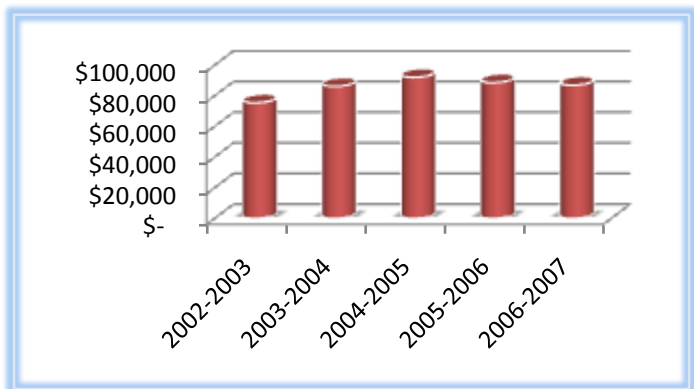
Hamilton	# of Students	Awards Paid
2002-2003	54	\$ 101,677
2003-2004	60	\$ 131,129
2004-2005	70	\$ 135,751
2005-2006	75	\$ 173,138
2006-2007	74	\$ 241,536
Total:		\$ 783,231



Jefferson	# of Students	Awards Paid
2002-2003	44	\$ 85,064
2003-2004	55	\$ 103,182
2004-2005	60	\$ 103,889
2005-2006	53	\$ 95,896
2006-2007	35	\$ 58,354
Total:		\$ 446,385



Lafayette	# of Students	Awards Paid
2002-2003	32	\$ 75,458
2003-2004	37	\$ 86,191
2004-2005	36	\$ 92,053
2005-2006	38	\$ 88,644
2006-2007	41	\$ 86,913
Total:		\$ 429,259

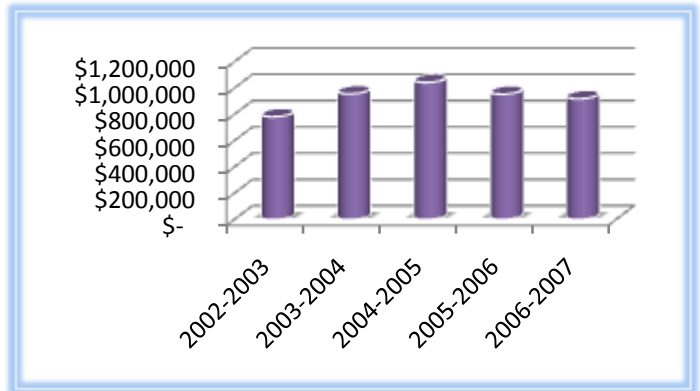


Financial Aid

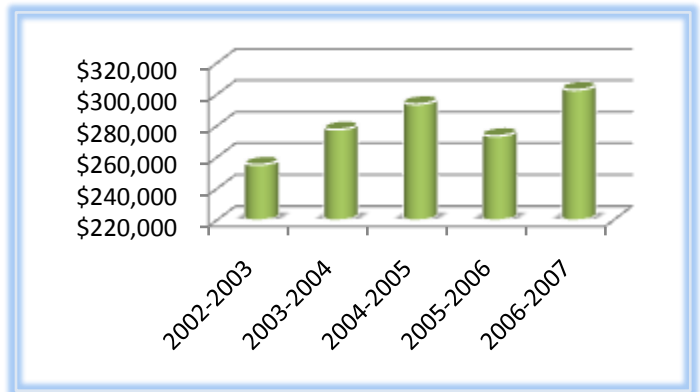


Awards by County (2006-2007)

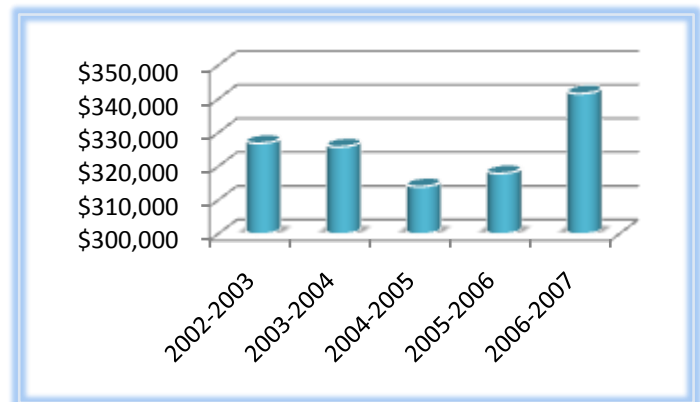
Madison	# of Students	Awards Paid
2002-2003	348	\$ 781,988
2003-2004	398	\$ 956,749
2004-2005	415	\$ 1,042,649
2005-2006	412	\$ 953,914
2006-2007	388	\$ 919,160
Total:		\$ 4,654,460



Suwannee	# of Students	Awards Paid
2002-2003	132	\$ 255,358
2003-2004	123	\$ 277,766
2004-2005	135	\$ 293,970
2005-2006	133	\$ 273,655
2006-2007	129	\$ 302,995
Total:		\$ 1,403,744



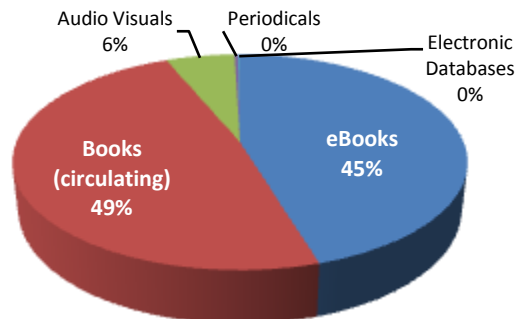
Taylor	# of Students	Awards Paid
2002-2003	141	\$ 326,931
2003-2004	142	\$ 325,879
2004-2005	140	\$ 314,078
2005-2006	163	\$ 317,984
2006-2007	156	\$ 341,690
Total:		\$ 1,626,562





2006-2007 Collections:

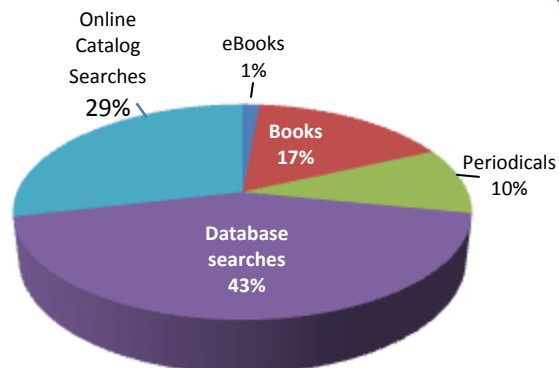
eBooks	30,330
Books (circulating)	32,395
Audio Visuals*	3,923
Periodicals	222
Electronic Databases	88
Total:	66,958



*Audio visuals include audiocassettes, DVDs, CDs, filmstrips, slides, and video tapes.

2006-2007 Circulation Statistics:

eBooks	1,624
Books	18,820
Periodicals	11,291
Database searches	48,815
Online Catalog Searches	32,289



Fiscal Acquisitions by Library of Congress Classification

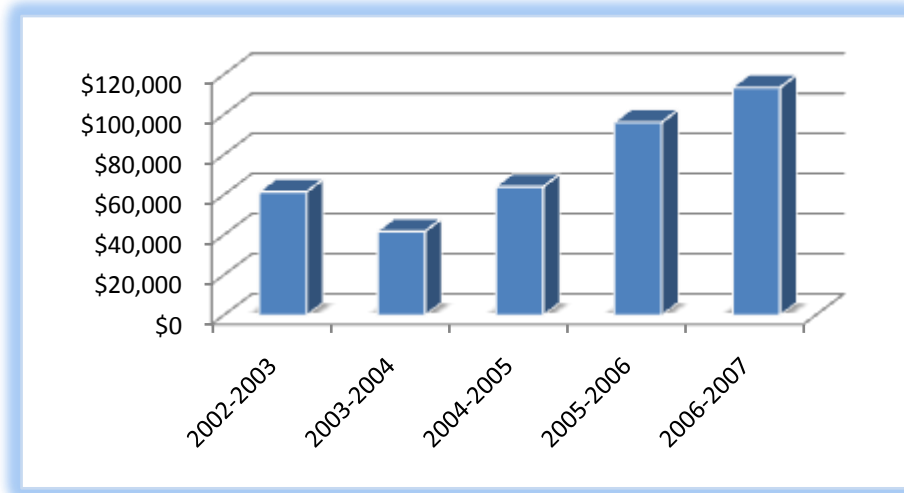
General Works	4	Music	108
Philosophy, Psychology Religion	119	Fine Arts	100
Auxiliary Sciences of History	15	Literature	190
History: General and Old World	140	Science	106
History: America	164	Medicine	78
Geography, Anthropology, Recreation	48	Agriculture	30
Social Sciences	185	Technology	78
Political Sciences	16	Military Science	14
Law	18	Naval Science	5
Education	46	Bibliographies, Library Science	19

NFCC Foundation



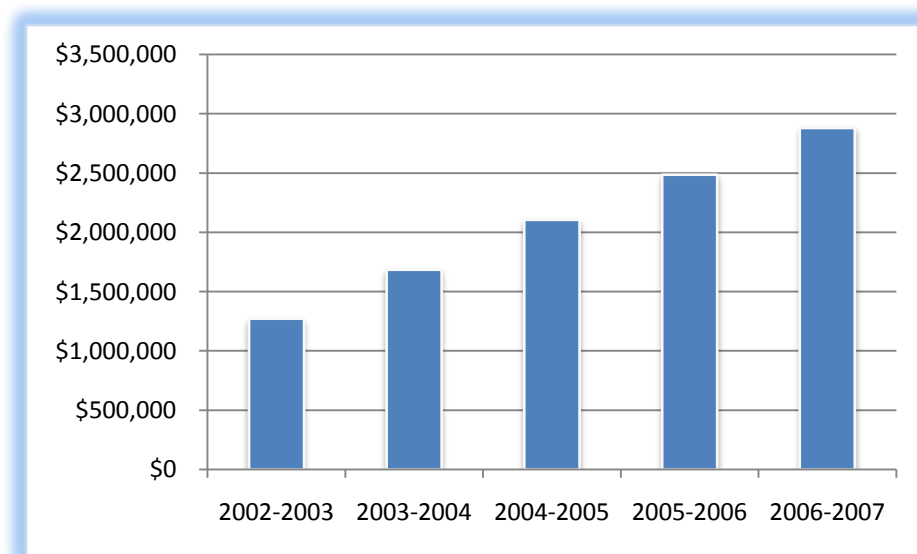
Scholarships Awarded (2002-2007):

2002-2003	2003-2004	2004-2005	2005-2006	2006-2007
\$61,532	\$41,804	\$64,118	\$96,184	\$113,529



Foundation Assets (2002-2007):

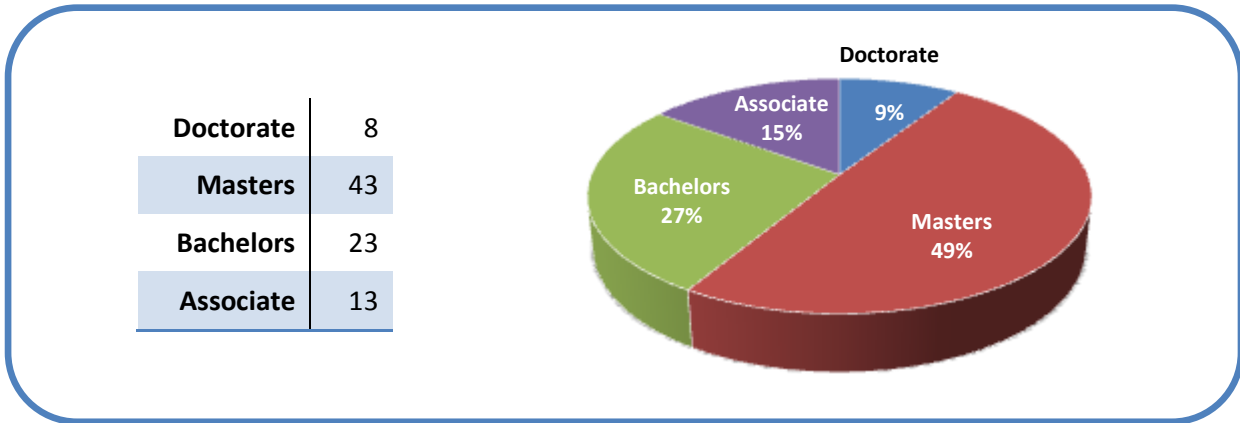
2002-2003	2003-2004	2004-2005	2005-2006	2006-2007
\$1,272,527	\$1,686,443	\$2,106,447	\$2,486,030	\$2,880,106



Personnel

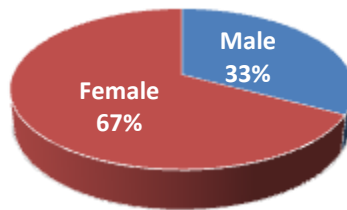


Full-Time Employees With Degrees (2006-2007)

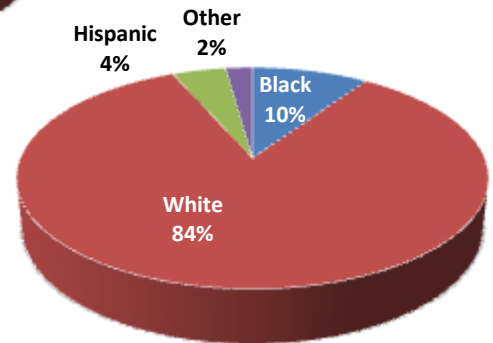


	Male	Female
Black	6	7
White	35	80
Hispanic	2	4
Other	2	1

Gender



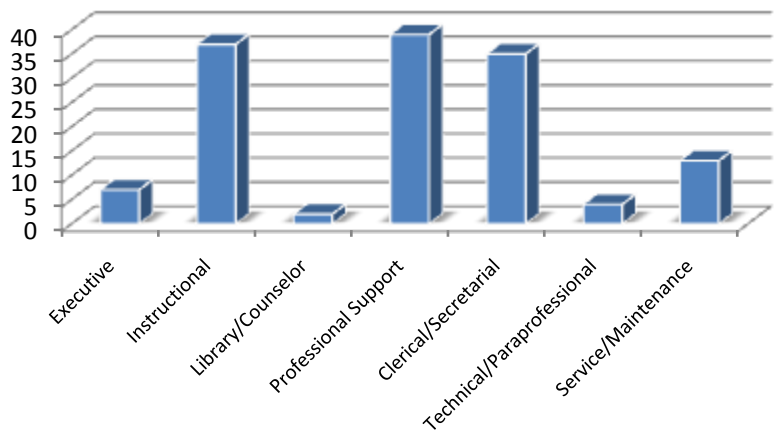
Race



57 (42%) of current NFCC employees are graduates of North Florida Community College!

Full-time Employees Occupational Activity:

Executive	7
Instructional	37
Library/Counselor	2
Professional Support	39
Clerical/Secretarial	35
Technical/Paraprofessional	4
Service/Maintenance	13

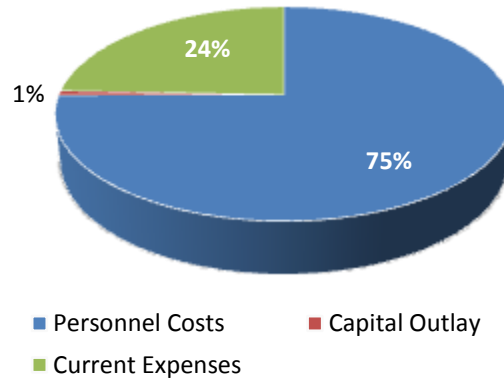


Finances

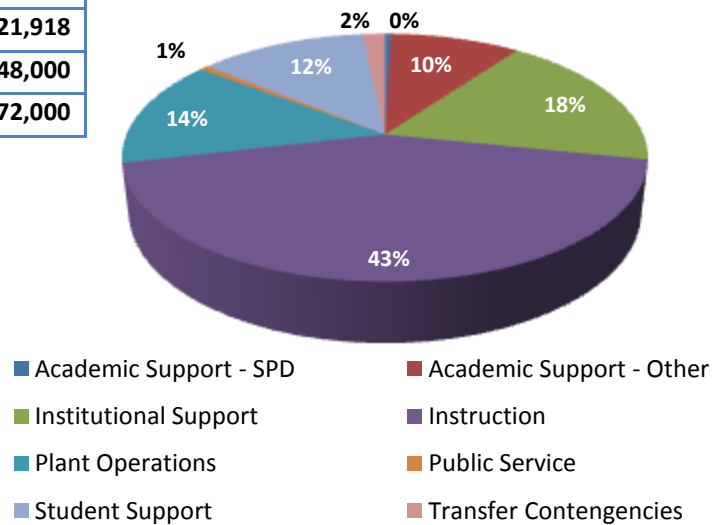


General Fund Budget (2007-2008):

By Object:	
Personnel Costs	\$6,797,131
Capital Outlay	\$61,992
Current Expenses	\$2,212,877
Total:	\$9,072,000



By Organizational Unit:	
Academic Support - SPD	\$41,708
Academic Support - Other	\$865,961
Institutional Support	\$1,653,591
Instruction	\$3,910,652
Plant Operations	\$1,274,179
Public Service	\$55,991
Student Support	\$1,121,918
Transfer Contingencies	\$148,000
Total:	\$9,072,000

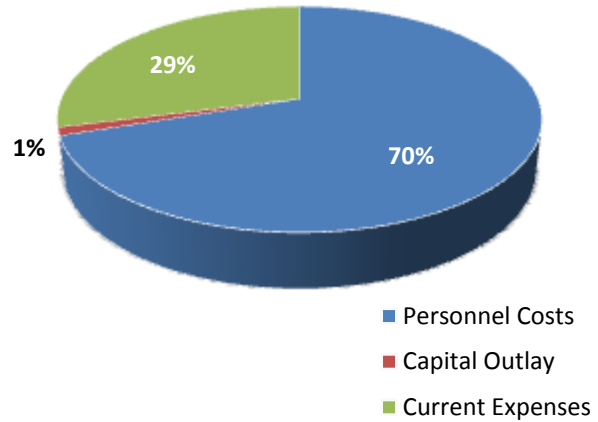


Finances

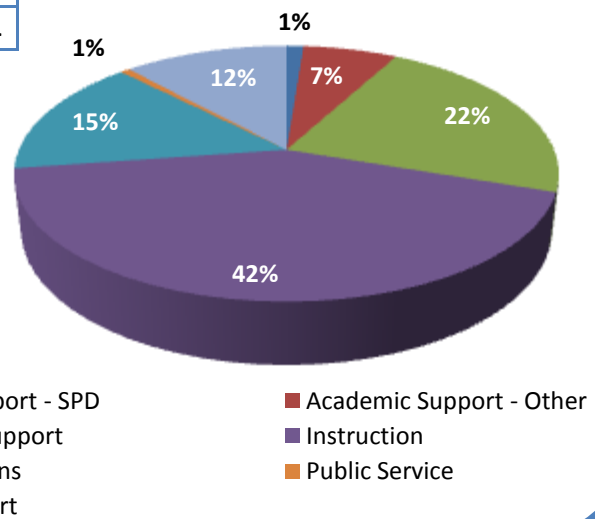


General Fund Budget Expenditures (2006-2007)

By Object:	
Personnel Costs:	\$6,173,202
Capital Outlay:	\$102,555
Current Expenses:	\$2,563,054
	\$8,838,811



By Organizational Unit:	
Academic Support - SPD	\$107,084
Academic Support - Other	\$592,360
Institutional Support	\$1,974,251
Instruction	\$3,749,449
Plant Operations	\$1,323,156
Public Service	\$57,089
Student Support	\$1,035,422
Total:	\$8,838,811

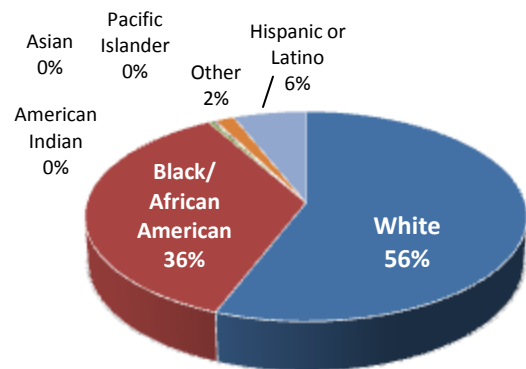
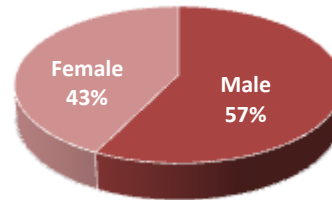


Census Data



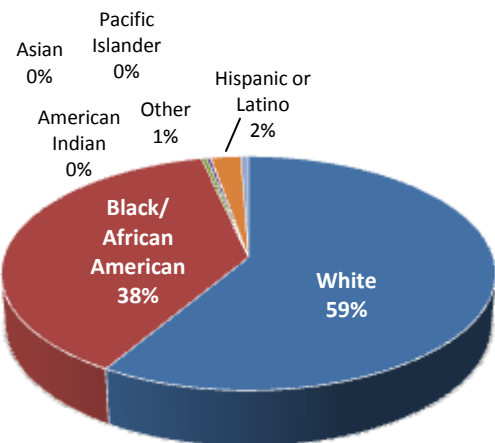
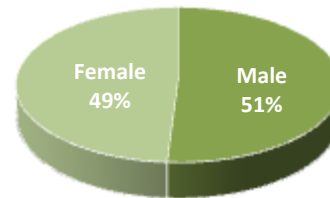
Hamilton County:

2000 Census Population:	13,327
Male:	7657
Female:	5670
White:	7835
Black/African American:	5027
American Indian:	56
Asian:	26
Pacific Islander:	2
Hispanic or Latino:	847
Other:	225
Median Family Income:	\$30,677
Of the Population Over Age 25:	
High School Graduate:	5507
Bachelor Degree or Higher:	636



Jefferson County:

2000 Census Population:	12,902
Male:	6581
Female:	6321
White:	7647
Black/African American:	4947
American Indian:	50
Asian:	39
Pacific Islander:	5
Hispanic or Latino:	290
Other:	73
Median Family Income:	\$40,407
Of the Population Over Age 25:	
High School Graduate:	6520
Bachelor Degree or Higher:	1506



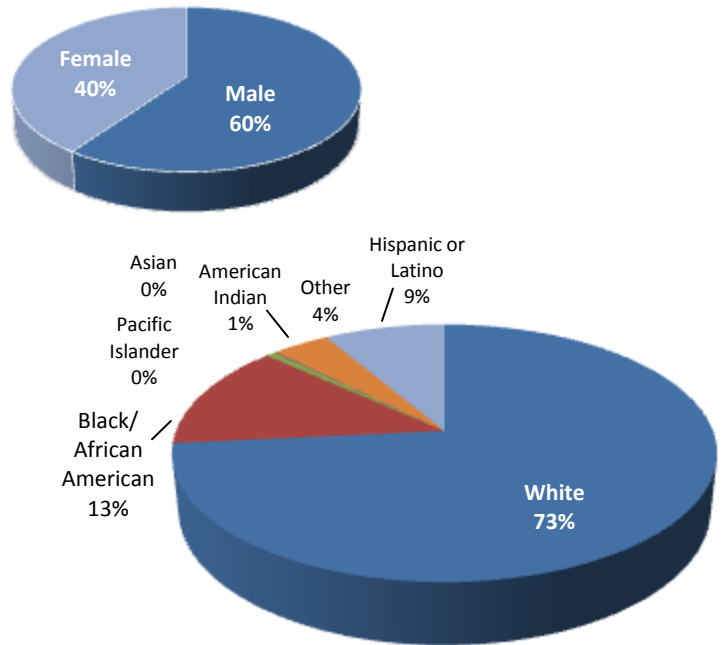
Census data retrieved from <http://factfinder.census.gov>. Data from 2000 is the most current.

Census Data



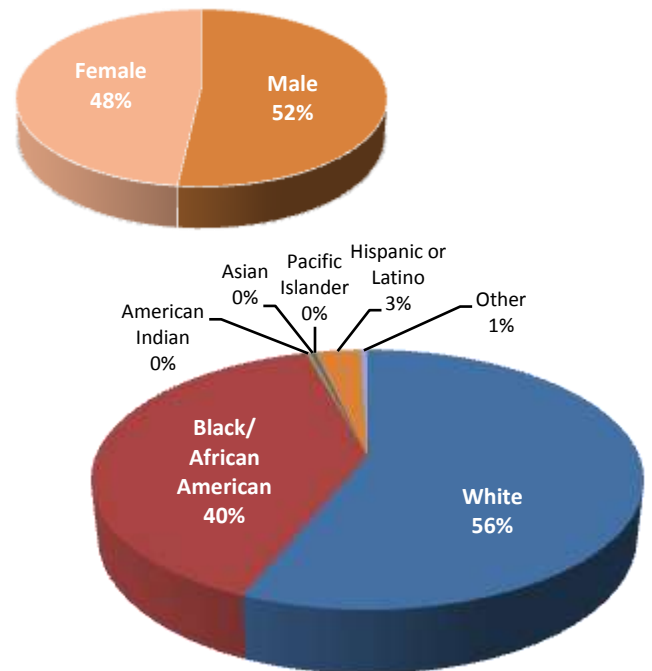
Lafayette County:

2000 Census Population:	7,022
Male:	4200
Female:	2822
White:	5566
African American:	1009
American Indian:	50
Asian:	9
Pacific Islander:	1
Hispanic:	642
Other:	302
Median Family Income:	\$35,202
Of the Population Over Age 25:	
High School Graduate:	3237
Bachelor Degree or higher:	340



Madison County:

2000 Census Population:	18,733
Male:	9710
Female:	9023
White:	10769
Black/African American:	7549
American Indian:	60
Asian:	60
Pacific Islander:	4
Hispanic or Latino:	600
Other:	96
Median Family Income:	\$31,753
Of the Population Over Age 25:	
High School Graduate:	8269
Bachelor Degree or Higher:	1252



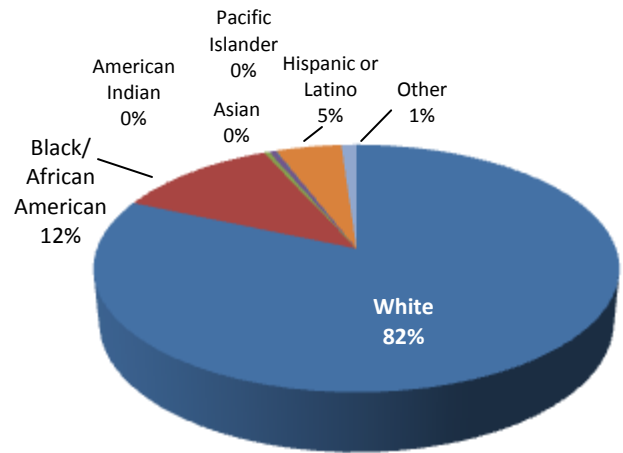
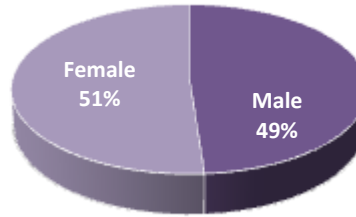
Census data retrieved from <http://factfinder.census.gov>. Data from 2000 is the most current.

Census Data



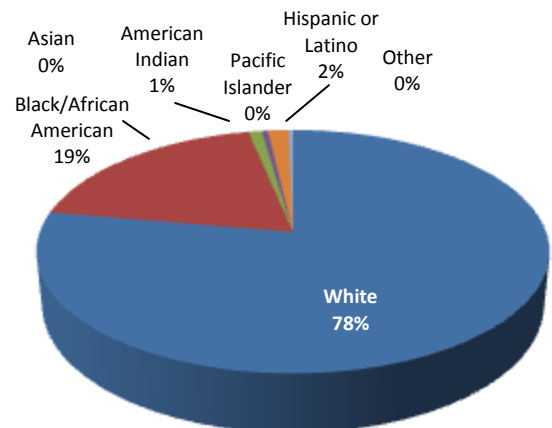
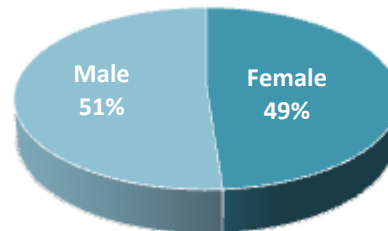
Suwannee County:

2006 Estimated Population:	34,844
Male:	17012
Female:	17832
White:	29455
Black/African American:	4221
American Indian:	137
Asian:	179
Pacific Islander:	13
Hispanic or Latino:	1703
Other:	391
Median Family Income:	\$34,032
Of the Population Over Age 25:	
High School Graduate:	17206
Bachelor Degree or Higher:	2462



Taylor County:

2006 Estimated Population:	19,256
Male:	9833
Female:	9423
White:	14988
Black/African American:	3666
American Indian:	188
Asian:	85
Pacific Islander:	3
Hispanic or Latino:	295
Other:	61
Median Family Income:	\$35,061
Of the Population Over Age 25:	
High School Graduate:	9041
Bachelor Degree or Higher:	1147



Census data retrieved from <http://factfinder.census.gov>. Data from 2000 is the most current.

Glossary of Terms



Academic Year – The fall, spring, and summer terms of overlapping calendar years. For example, fall 2006, spring 2007, and summer 2007 comprise the 2006-2007 academic year. This differs from the reporting year which begins with summer and ends with spring.

Accreditation – Certification by an official review board that specific requirements have been met. NFCC is accredited by the Southern Association of Colleges and Schools (SACS).

Adult Basic Education (ABE) – Education for adults to help them attain basic or functional literacy skills.

Advanced & Professional (A&P) – A program area with courses designed to provide the first two years of course work leading to an advanced or professional degree (bachelors, masters, etc.). It includes general education and specialized lower-division courses necessary to transfer into a degree program.

Associate in Arts (AA) – A program of instruction that consists of courses offered to freshmen and sophomores. This degree will transfer to the state university system and is awarded when a student completes 60 hours of college credit along with specified performance requirements.

Associate in Applied Science (AAS) – A program of instruction with courses to prepare students for entry into employment. These courses are usually not transferrable to a baccalaureate program.

Associate in Science (AS) – A program of instruction with courses to prepare students for entry into employment or college transfer. These courses are more likely transferrable to a baccalaureate program than the AAS.

College Credit – The type of credit assigned to courses that are part of an organized and specified college degree or program.

Credit Hour – The number of contact hours for a course.

Dual Enrollment – Enrollment in two institutions at the same time, such as a college and high school, which allows students to earn both high school and college credit simultaneously.

Duplicated Headcount – A headcount measure by which students may be counted in more than one category. This measure usually describes the number of seats taken across multiple courses.

First Time in College (FTIC) – A student attending college for the first time with no prior credit toward a degree or formal award.

Full-time equivalency (FTE) – A measure to describe various cohorts of students based on the number of student credit hours generated. FTE is computed by dividing the total number of credit or clock hours by 30.

Full-time Student – A student who is registered for 12 or more credit hours in the fall and spring semesters or four or more credit hours in the summer semester.

General Education Development (GED) Test – A measure designed to provide an opportunity for adults who have not graduated from high school to earn a State of Florida High School diploma by measuring the major academic skills and knowledge associated with a high school program of study.

Part-time Student – A student who is registered for less than 12 credit hours in the fall and spring terms or fewer than four credit hours in the summer term.

Postsecondary Adult Vocational Program (PSAV) – Job preparatory programs through which a student may receive a vocational certificate upon completion of instruction.

Postsecondary Vocational (PSV) – Vocational education for students who have left or completed high school and who are enrolled in an organized program of study for which credit is given toward an associate degree.

Reporting Year – The summer, fall, and spring terms of overlapping calendar years. For example, summer 2006, fall 2007, and spring 2007 comprise the 2006-2007 reporting year. This differs from the academic year which begins with fall and ends with summer.

Returning Students – Students enrolled for the current term who were also enrolled in a prior term at the College.

Unduplicated Headcount – A headcount measure by which students are counted in only one category.

Vocational Certificate – The award for satisfactory completion of a program of study designed to prepare students for entry into an occupation.

Workforce Education Program – Training and/or retraining for adults who are out of school and already in the workforce.

FACT BOOK 2006-2007

Compiled by the NFCC Office of Institutional Effectiveness, Research & Planning

Morris G. Steen, Jr.

President

325 NW Turner Davis Drive
Madison, FL 32340

850-973-2288
www.nfcc.edu



Portable buildings are a sign of progress on campus. The NFCC Student Success Center is temporarily housed in a portable building while renovations of the previous science annex and math building are underway.

NFCC is accredited by the Commission on Colleges of the Southern Association of Colleges and Schools to award the associate degree.