



NORTH FLORIDA COMMUNITY COLLEGE



2013-2014

Fact Book





NFCC

Preface



NORTH FLORIDA COMMUNITY COLLEGE

2013-2014 Academic Year Fact Book

325 NW TURNER DAVIS DRIVE
MADISON, FL 32340
850-973-2288
www.nfcc.edu

President

John Grosskopf
GrosskopfJ@nfcc.edu
Phone 850-973-1601
Fax 850-973-1602

Office of Institutional Effectiveness, Research, and Accreditation

Susan Taylor
TaylorS@nfcc.edu
Phone 850-973-1679
Fax 850-973-1684

Cheri Green
GreenC@nfcc.edu
Phone 850-973-1678
Fax 850-973-1684

NFCC Board of Trustees

Michael R. Williams, Chair, Madison County
Ricky N. Lyons, Lafayette County
Ann "Sharon" Benoit, Madison County
Sandra Haas, Suwannee County
Dawn Gunter, Taylor County
Brantly Helvenston, Suwannee County
William "Billy" Washington, Madison County
Lloyd "Gary" Wright, Jefferson County

Purpose

The 2013-2014 North Florida Community College Fact Book provides information about NFCC and includes student, financial, and personnel data. The Office of Institutional Effectiveness, Research, and Accreditation has made every effort to ensure delivery of timely and accurate information. We hope you will use this publication on a continual basis. We welcome feedback and suggestions, and our measure of success is the degree to which people find this publication informative and useful.

Data has been compiled from IPEDS, State Accountability Reports, FLDOE Articulation Reports, U.S. Census Bureau, internal databases, and external higher education and economic websites. Data included from sources other than NFCC's internal databases are cited within this document underneath the relevant data/charts.

Every effort has been made to portray an accurate snapshot of North Florida Community College. However, if you have any questions or concerns about the facts and/or data within this document, please contact NFCC's Office of Institutional Effectiveness, Research, and Accreditation.

North Florida Community College is dedicated to the concept of equal opportunity and access. In accordance with Federal and State laws, and College policy, NFCC does not discriminate in any of its policies, procedures, or practices on the basis of age, color, sex, religion, national origin, race, creed, marital status, genetic information, or physical/mental disability. Inquiries regarding equity issues of any nature may be directed to Denise Bell, Equity Coordinator, 325 NW Turner Davis Drive, Madison, Florida 32340, call 850-973-9481 or email Belld@nfcc.edu.

Vision

To be our communities' first choice for education and cultural enrichment.

Mission

An exceptional college dedicated to an individualized and supportive academic atmosphere, accessible education, lifelong learning opportunities, and professional growth for our students and communities.

Values

Positive Attitude | Accountability | Commitment | Excellence | Respect

2012-2017 Strategic Plan

North Florida Community College is committed to excellence in teaching and learning and has identified the following institutional values upon which to base these efforts:

- **Positive Attitude** – approach situations in an optimistic manner.
- **Accountability** – demonstrate quality standards are being upheld.
- **Commitment** – promise to provide the best service to our students and community.
- **Excellence** – adhere to the highest standards of teaching, learning, and professionalism.
- **Respect** – treat all individuals with fairness and dignity.

Goal #1: Improve performance accountability:

Create and maintain a sustainable and data-driven decision-making campus environment.

- **Objective 1.** Complete comprehensive program reviews. (Comprehensive Program Reviews)
 - a) Conduct comprehensive program reviews for all academic and non-academic departments.
 - b) Analyze student learning outcome assessment data and document continual improvement of instruction.
 - c) Conduct market surveys to ensure program offerings meet the educational needs of our students and district.
- **Objective 2.** Strengthen employee development. (Employee Development)
 - a) Provide leadership, development opportunities, and resources for staff and faculty to work effectively.
 - b) Align campus committee and work team assignments with identified employee interests and strengths.
 - c) Analyze predicted employment changes and develop a succession plan.
 - d) Develop an alluring employee recruitment package.
 - e) Create and implement a comprehensive employee orientation.

Goal #2: Strengthen communication:

Strengthen information sharing procedures at North Florida Community College.

- **Objective 1.** Design and implement a plan to ensure information is effectively shared. (Campus Communication)
 - a) Create and implement a protocol to ensure internal and external communication.

- b) Identify and improve procedures and/or process to address employee concerns.
- **Objective 2.** Align institutional policies with comprehensive procedures. (Policies and Procedures)
 - a) Review all existing institutional policies for consistency.
 - b) Identify and develop procedures for each policy.
 - c) Develop operations manuals for department activities.
- **Objective 3.** Ensure students, faculty, and staff are knowledgeable about safety procedures on campus. (Safety)
 - a) Provide training to share the safety procedures and available resources.
 - b) Conduct drills to practice the safety procedures.
- **Objective 4.** Create a comprehensive campaign to brand the NFCC image. (Image)
 - a) Capture and publish stories about the impact of NFCC on students, alumni, employees, and the district.
 - b) Evaluate the mission and vision to ensure they reflect institutional values.

Goal #3: Increase resource acquisition and allocation:

Ensure campus funding acquisition, expenditures, and resource allocation are aligned with strategic plan.

- **Objective 1.** Increase funding and implement transparency related to financial resources. (Financial Resources)
 - a) Increase external funding through grants, donors, endowments, alumni, and other resources.
 - b) Implement a transparent process for budget planning and disbursement of funds.
 - c) Review foundation policies and procedures to best provide financial support to the widest range of students.
 - d) Promote self-sufficiency for auxiliary enterprises on campus.
- **Objective 2.** Create and implement a comprehensive technology plan. (Technology)
 - a) Evaluate technology needs of students and employees.
 - b) Analyze and plan for future technology needs of students and employees.
 - c) Align technology purchase decisions with identifiable needs of students and employees.
- **Objective 3.** Create and implement a campus efficiency plan. (Sustainability)
 - a) Increase awareness of sustainability through professional development workshops.
 - b) Ensure all departments on campus include a sustainability goal in their institutional effectiveness plans.

Goal #4: Provide a holistic campus experience:

Provide a holistic campus experience for students, faculty, and staff.

- **Objective 1.** Develop an intentional and seamless recruitment, advising, and retention system. (Advising and Retention)
 - a) Analyze the existing advising, recruitment, and retention activities on campus and align them into a seamless delivery of services.
 - b) Create a one-stop center for advising, recruitment, and retention.
 - c) Analyze the scheduling needs of students, including time and location based on all student types.
 - d) Increase graduation rates.
- **Objective 2.** Assess campus enrichment and support resources. (Resources)
 - a) Conduct satisfaction, usage, and needs surveys.
 - b) Integrate services to reflect optimal utilization and creativity.

Table of Contents

| | |
|--|----|
| Preface..... | II |
| Purpose | IV |
| Vision..... | V |
| Mission | V |
| Values..... | V |
| 2012-2017 Strategic Plan | V |
| College Profile..... | 1 |
| Campus Location..... | 3 |
| Website..... | 3 |
| Established | 3 |
| Accreditation | 3 |
| Type of Institution | 3 |
| Degrees Offered | 3 |
| Other Awards..... | 4 |
| Tuition..... | 6 |
| Financial Aid | 7 |
| History | 9 |
| NFCC Offerings | 10 |
| Memberships | 10 |
| Location | 11 |
| The Campus | 11 |
| Campus Life | 17 |
| Student Clubs and Organizations..... | 19 |
| Community Theatre | 19 |
| Performing Artist Series | 19 |
| Community Education | 20 |
| Education to Go (ed2go) Online Non-Credit Classes..... | 20 |
| Campus Security | 21 |
| The Student Population..... | 23 |
| Total Student Headcount | 25 |
| Enrollment by Program | 26 |
| County Enrollment by Term | 28 |
| 5 Year County Enrollment..... | 29 |
| District High School Graduates Enrolled | 32 |
| Enrollment by Gender | 33 |
| Enrollment by Age | 34 |
| Enrollment by Ethnicity | 35 |
| Enrollment Schedule by Day and Time | 38 |
| Instructor to Student Ratio | 39 |
| Average Class Size..... | 39 |
| Student Success | 41 |
| Degrees Awarded | 43 |
| Graduates by Program..... | 44 |
| First Time in College Retention & Success | 45 |
| College Preparatory Retention & Success | 46 |
| Vocational Placement | 47 |
| Economic Success Measures | 48 |
| NFCC Transfer Success | 50 |
| Top Universities Receiving NFCC Graduates | 50 |
| Grade Distribution..... | 51 |
| Distance Learning | 53 |
| Number of Online Courses..... | 55 |

| | |
|--|-----|
| Number of Online Students..... | 55 |
| Online Student Demographics | 56 |
| Dual Enrollment..... | 57 |
| Number and Cost of Dual Enrolled Student | 59 |
| Financial Aid..... | 65 |
| Number of Financial Aid Awards..... | 67 |
| Dollar Amount of Financial Aid Awards | 67 |
| Distribution by County..... | 67 |
| Awards by County..... | 68 |
| The Library | 71 |
| Collections | 73 |
| Circulation Statistics..... | 73 |
| Interlibrary Loan Statistics..... | 74 |
| Orientation Sessions..... | 74 |
| The Foundation | 75 |
| Scholarships Awarded | 77 |
| Foundation Assets` | 77 |
| Faculty and Staff | 79 |
| Full-Time Faculty | 81 |
| Full-Time Staff | 82 |
| Full-Time Faculty and Staff | 83 |
| Finances..... | 85 |
| General Fund Budget..... | 87 |
| General Fund Expenditures | 88 |
| Percent Distribution of Core Revenues..... | 89 |
| Core Revenues per FTE Enrollment..... | 89 |
| Percent Distribution of Core Expenses | 90 |
| Core Expenses per FTE Enrollment | 90 |
| The District..... | 91 |
| Hamilton County | 93 |
| Jefferson County..... | 94 |
| Lafayette County..... | 95 |
| Madison County..... | 96 |
| Suwannee County | 97 |
| Taylor County | 98 |
| Economic Impact..... | 99 |
| Perspective..... | 102 |
| Student Perspective..... | 103 |
| Taxpayer Perspective | 103 |
| Taxpayer Perspective | 104 |
| College Rankings | 105 |
| Washington Monthly 2013 Community College Rankings | 107 |
| Glossary of Terms | 109 |
| Glossary of Terms | 111 |
| Campus Directory..... | 113 |
| Campus Directory | 115 |
| Campus Map | 118 |



NFCC

College Profile

Campus Location

325 NW Turner Davis Drive
Madison, Florida 32340

Website

www.nfcc.edu

Established

1958



Accreditation

North Florida Community College is accredited by the Southern Association of Colleges and Schools Commission on Colleges to award associate in arts degrees, associate in science degrees and career and technical certificates. Contact the Commission on Colleges at 1866 Southern Lane, Decatur, Georgia 30033-4097 or call 404-679-4500 for questions about the accreditation of North Florida Community College.

Type of Institution

Public

Degrees Offered

| Associate in Arts Degree Program | Semester Credit Hours |
|---|------------------------------|
| Associate in Arts | 60 |
| Associate in Arts: Business Emphasis | 60 |
| Associate in Arts: Education Emphasis | 60 |
| Associate in Arts: Nursing Emphasis | 60 |
| Associate in Science Degree Program | Semester Credit Hours |
| Associate in Science: Business Administration | 60 |
| Associate in Science: Criminal Justice Technology | 64 |
| Associate in Science: Digital Media/Multimedia Technology | 64 |
| Associate in Science: Early Childhood Education | 63 |
| Associate in Science: Emergency Medical Services | 73 |
| Associate in Science: LPN-RN Bridge | 72 |
| Associate in Science: Nursing - RN | 72 |

Other Awards

| College Credit Certificates | Semester Credit Hours |
|---|------------------------------|
| Business Development and Entrepreneurship | 25 |
| Business Operations: Accounting/Budgeting | 18 |
| Business Operations: Management | 18 |
| Business Operations: Small Business Management | 18 |
| Child Care Center Management Specialization | 12 |
| Digital Media/Multimedia Authoring | 12 |
| Digital Media/Multimedia Instructional Technology | 15 |
| Digital Media/Multimedia Production | 15 |
| Digital Media/Multimedia Web Production | 15 |
| Human Resources Administrator | 21 |
| Network Security | 30 |
| Paramedic | 42 |
| Preschool Specialization | 12 |

Career Technical Certificates

Clock Hours

| | |
|---|------|
| Administrative Office Specialist | 1050 |
| Automation and Production Technology | 600 |
| Child Care Center Operations | 45 |
| Correctional Officer Basic Recruit | 420 |
| Corrections and Law Enforcement Basic Dual Cert | 935 |
| Crossover Correctional Officer to Law Enforcement | 515 |
| Crossover Law Enforcement to Correctional Officer | 172 |
| Early Childhood Professional | 600 |
| Firefighter | 206 |
| Law Enforcement Recruit | 770 |
| Medical Administrative Specialist | 1050 |
| Patient Care Technician | 600 |
| Pharmacy Technician | 1050 |
| Practical Nursing | 1350 |

Applied Technology Diploma

Semester Credit Hours

| | |
|------------------------------|----|
| Emergency Medical Technician | 11 |
|------------------------------|----|



Tuition

NFCC strives to keep its tuition costs low and competitive with other comparable educational institutions. Financial aid may be available to qualifying students through student loans, grants or scholarships.

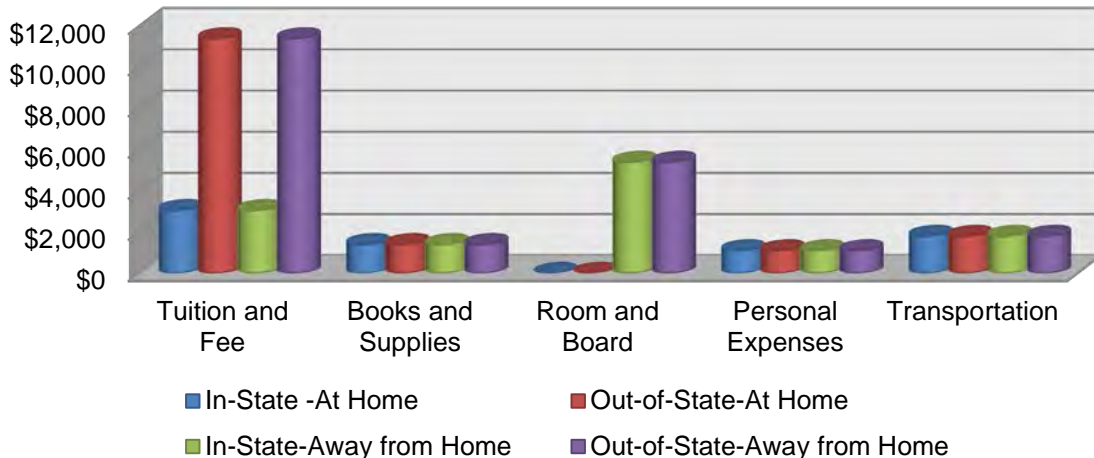
2013-2014 Estimated Student Budget

| At Home | In-State | Out-of-State |
|--------------------|-----------------|-----------------|
| Tuition and Fees | \$3,054 | \$11,400 |
| Books and Supplies | \$1,400 | \$1,400 |
| Room and Board | \$0 | \$0 |
| Personal Expenses | \$1,100 | \$1,100 |
| Transportation | \$1,800 | \$1,800 |
| Total | \$7,354 | \$15,700 |
| Away from Home | In-State | Out-of-State |
| Tuition and Fees | \$3,054 | \$11,400 |
| Books and Supplies | \$1,400 | \$1,400 |
| Room and Board | \$5,400 | \$5,400 |
| Personal Expenses | \$1,100 | \$1,100 |
| Transportation | \$1,800 | \$1,800 |
| Total | \$12,754 | \$21,100 |

NOTE: Cost is estimated. Tuition and fees are subject to change.

Source: IPEDS Data Institutional Profile 2013-2014

2013-2014 Estimated Student Costs



Source: IPEDS Data Institutional Profile 2013-2014

Typical tuition and required fees for full-time students: Academic year 2013-14

| Level of student | In-state | Out-of-state |
|------------------|----------|--------------|
| Undergraduate | \$2,994 | \$11,460 |
| Graduate | | |

Source: IPEDS Data Institutional Profile 2013-2014

Financial Aid

Student Financial Aid, 2012-13

| | Percent Receiving Aid | Average Amount Aid of Received |
|---|-----------------------|--------------------------------|
| All undergraduate students | | |
| Any grant or scholarship aid | 68% | \$4,566 |
| Pell grants | 56% | \$4,419 |
| Federal student loans | 0% | |
| Full-time, first-time, degree/certificate-seeking undergraduate students | | |
| Any student financial aid | 88% | |
| Grants or scholarship aid | 88% | \$5,063 |
| Federal grants | 69% | \$4,693 |
| Pell grants | 69% | \$4,648 |
| Other federal grants | 67% | \$450 |
| State or local grants and scholarships | 51% | \$1,289 |
| Institutional grants and scholarships | 40% | \$1,451 |
| Student loan aid | 0% | |
| Federal student loans | 0% | |
| Other student loans | 0% | |

Source: IPEDS Data Institutional Profile 2013-2014

Average net price of attendance for full-time, first-time, degree/certificate-seeking undergraduate students who paid the in-state tuition rate and were awarded grant or scholarship aid: 2010-11 - 2012-13

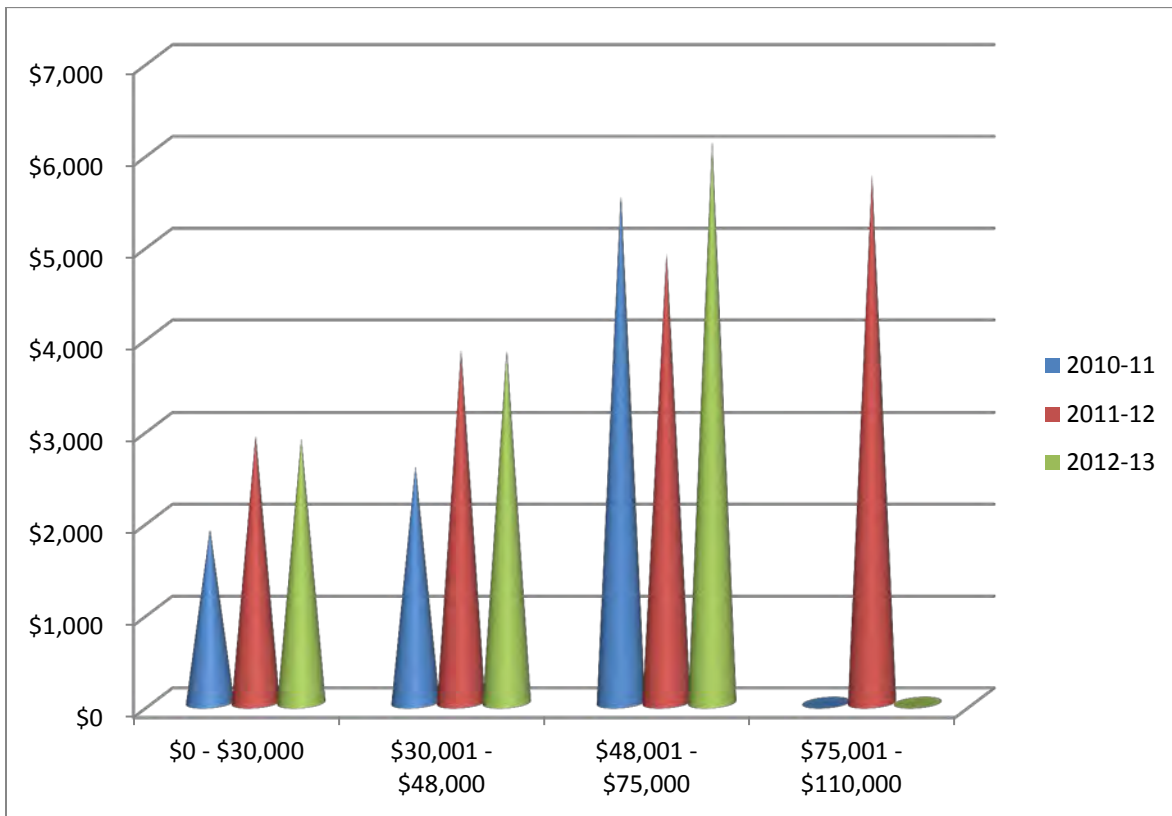


Source: IPEDS Data Institutional Profile 2013-2014

Average net price of attendance for full-time, first-time, degree/certificate-seeking undergraduate students who paid the in-state or in-district tuition rate and were awarded Title IV aid, by income: 2009-10 - 2011-12

| Income | 2010-11 | 2011-12 | 2012-13 |
|----------------------|---------|---------|---------|
| \$0 - \$30,000 | \$1,891 | \$2,912 | \$2,876 |
| \$30,001 - \$48,000 | \$2,572 | \$3,830 | \$3,845 |
| \$48,001 - \$75,000 | \$5,541 | \$4,893 | \$6,101 |
| \$75,001 - \$110,000 | \$0 | \$5,742 | \$0 |

Source: IPEDS Data Institutional Profile 2013-2014



Source: IPEDS Data Institutional Profile 2013-2014

History

The Florida Legislature of 1957 authorized North Florida Junior College and five other community colleges in the state. The counties of Hamilton, Lafayette, Madison, Suwannee, and Taylor were proposed as an area with need for a community junior college. In the establishment of the college area, Jefferson County replaced Suwannee County, with Suwannee County becoming a participating county in 1974.

In March 1958, Dr. Marshall W. Hamilton was appointed president of the new institution, and temporary academic and administrative quarters were secured in Madison. In September the first NFJC classes were organized. Ground was broken in January 1959 for the first permanent buildings, the Library and the Science Building. Suwannee River Junior College was established in 1959, with Dr. James J. Gardner, founding president, serving until 1961. Mrs. Jenyethel Merritt served as president until Suwannee River Junior College merged with NFJC in 1966.

Dr. Stephen T. McMahon served as president from 1970-1978; Dr. Gary P. Sims, 1978-1984; and Dr. Robert W. Ramsay, 1984-1987. Dr. William H. McCoy assumed the presidency on Aug. 1, 1987. On April 17, 1988, a tornado damaged many campus buildings and destroyed the Van. H. Priest Auditorium and Hardee Chapel.

In July 1995, the District Board of Trustees changed the name of the College from North Florida Junior College to North Florida Community College in order to better define the purpose of the institution.

Dr. McCoy retired in 1995. On January 2, 1996, Dr. Beverly M. Grissom became president. Dr. Grissom retired in 2001. Morris G. Steen, Jr. was named president of NFCC on March 1, 2002; he served as interim president from July 2001 through February 2002 before being named NFCC's seventh president. In 2008 the college celebrated its 50th year anniversary. Steen retired in 2008. John Grosskopf was named the eighth president of NFCC on Jan. 20, 2009.



NFCC Offerings

- Transferable college credit programs leading to the Associate in Arts Degree
- Workforce development programs leading to the Associate in Science Degree or technical certificates
- for occupational skills and employment
- Access to baccalaureate degree programs through partnerships with colleges and universities
- Personal, professional and academic development opportunities through credit and non-credit programs
- Partnerships with business, industry, government and other institutions to promote economic development and provide retraining opportunities for the district's workforce
- Support services to assist students in making educational, vocational and personal decisions
- Cultural, recreational and enrichment opportunities for students and residents of the community

Memberships

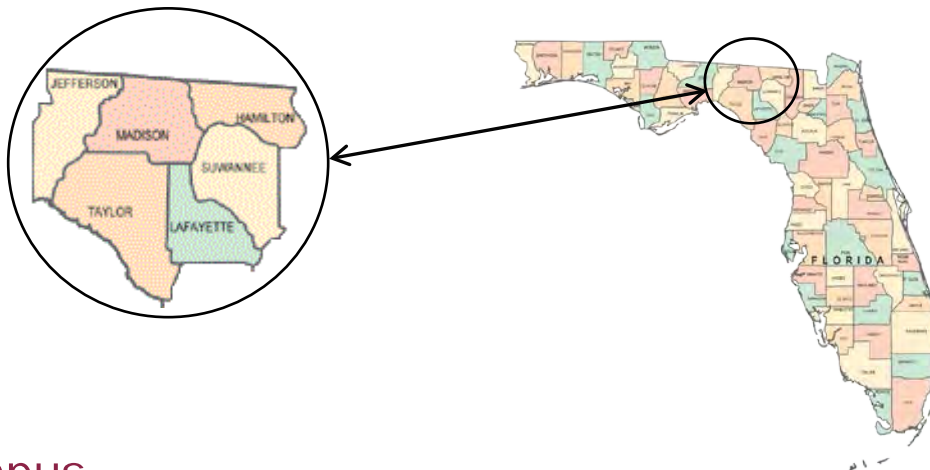
- American Association of Community Colleges
- Association of Florida Colleges
- Council for Higher Education Accreditation
- Florida Association of Colleges and Universities
- Florida Association of Collegiate Registrars and Admissions Officers
- Florida Association of Financial Aid Administration
- Florida Association of Veterans Education Specialization
- Florida Developmental Education Association
- Hamilton County Chamber of Commerce
- Lafayette County Chamber of Commerce
- Madison County Chamber of Commerce & Tourism
- Monticello-Jefferson County Chamber of Commerce
- National Association of College and University Business Officers
- National Council for Marketing and Public Relations
- Northeast Florida Education Consortium
- Southern Association of Colleges and Schools
- Suwannee County Chamber of Commerce
- Taylor County-Perry Chamber of Commerce
- The Florida College System



Location

NFCC is located in Madison, Florida at 325 NW Turner Davis Drive. Madison lies in the center of NFCC's six county service area (Hamilton, Jefferson, Lafayette, Madison, Suwannee, and Taylor Counties), off of I-10 near I-75, and is near such major Florida cities as Tallahassee and Jacksonville. NFCC is also just minutes away from the Georgia border and is a short distance from the Gulf of Mexico and cities bordering the Atlantic Ocean.

The City of Madison has a population of just over 3000; Madison County's total population is close to 20,000; and NFCC's six-county service area has a combined population of over 115,000 (figures based on data from the US Census Bureau website <http://quickfacts.census.gov/qfd/index.html>).



The Campus

Within walking distance of downtown Madison, the NFCC campus is situated on 165 acres of naturally beautiful property. The campus features a 20-acre outdoor environmental center, a 580-seat auditorium, a newly renovated fitness and wellness center, public art, one of the best college libraries in the state, and a state-of-the-art science learning center and public safety training facility.

Madison's natural beauty, small town hospitality and proximity to larger cities make NFCC a wonderful place to learn.



Major NFCC Buildings

- Marshall W. Hamilton Library (1959, 1998)
- Developmental Education/Mathematics Classrooms (1959, 2008)
- Business Education Building (1961)
- Student Center (1962)
- Walter L. Bishop Administration Building (1963)
- Colin P. Kelly Fitness Center (1965, 2010)
- Fine Arts Building (1965)
- Testing Center (1965)
- General Classroom Building (1966)
- Maintenance Building (1967)
- Technology Center (1967, 2008)
- Career and Technical Education Center (1967)
- Administrative Services Center (1967)
- Van H. Priest Auditorium (1969, 1991)
- Hardee Center for the Arts (1993, 2009)
- Morris G. Steen, Jr. Science Learning Center (2007)
- Public Safety Academy Building (2008)



Other Named Buildings and Facilities



The Norman O. and Leone N. Protsman Bell Tower erected in 1992.

The Frank Cantey Softball Field dedicated in 1999.

The original Hardee Chapel was built in 1973 and dedicated to Mrs. Claire Hardee Parramore. It, along with several other buildings including Van H. Priest Auditorium, was destroyed by a tornado which swept the campus in 1988. The Hardee Center was built to replace the Hardee Chapel in 1993 and remodeled into the Hardee Center for the Arts in 2009.

The Developmental Education/Mathematics Classrooms Building, built in 1959, was originally named the A.J. Hargrove Science Building. It was renovated and renamed in 2008.

The Florida Collection, housed in the Marshall W. Hamilton Library was dedicated to the memory of Joe Akerman, professor of history at NFCC from 1965 - 2009. A memorial plaque was unveiled and the collection renamed the Joseph Alexander Akerman, Jr. Florida Collection on April 21st, 2013.

Bacot Art Gallery

The Bacot Art Gallery at NFCC was inaugurated in the autumn of 1975 and has been in continuous operation since that date. On March 3, 2006 a memorial plaque honoring the late Jules deRomand Bacot, professor of art and humanities at NFCC from 1969-1983, was unveiled and remains on display in the gallery. The Bacot Gallery is located in the Student Center, Bldg. 9.

Hardee Center for the Arts

In September 2009, the Hardee Center for the Arts opened in Bldg. 11. The Hardee Center for the Arts shows monthly exhibits of national and local artists. The Gallery is open Monday-Thursday, 10 a.m.-4 p.m.

Information on current or upcoming exhibits is available from the NFCC Art Department, (850) 973-1642, or online at www.nfcc.edu/departments/academics/visual-arts.

Colin P. Kelly Fitness Center

The Colin P. Kelly Fitness Center (Bldg. 12) is NFCC's new, state-of-the-art fitness facility. The fitness room is fully loaded with cutting edge cardio and resistance training equipment. From resistance training machines, to free weights, basketball or volleyball, there is something for everyone looking to get active and stay healthy. The building also features multi-purpose rooms that accommodate activities such as yoga, fitness and aerobic classes, meetings and special events. The building was originally built in 1965 as the Colin P. Kelly Gymnasium. In 2010, renovations were completed and the building was renamed the Colin P. Kelly Fitness Center. A half-mile, outdoor walking track was also added to the campus during the renovations. The fitness center is open to current NFCC students. The Fitness Walking Trail is open to the public.

More information and operation hours are available at www.nfcc.edu/fitness-and-wellness-center or call (850) 973-1651.



Ladell Brothers Outdoor Environmental Center



The Ladell Brothers Outdoor Environmental Center was conceived in the fall of 1972 and gradually became a reality through state grants, local donations, and the hard work and dedication of the North Florida Community College faculty and student body. The nature center's main entrance, located on the northwest part of the campus, leads to the picnic area, which is the beginning and end of a series of nature trail loops.

Habitats included along the trails are stream, lake, swamp, mixed hardwood forest, agricultural field, and campus grasslands. The main purpose of the center is to serve as an outdoor classroom for the pursuit of environmental education. NFCC's surrounding school districts often use the center as an environmental study area. The Ladell Brothers Outdoor Environmental Center is also available for recreational uses and was named an official site for the Great Florida Birding Trail in 2003. Binoculars may be borrowed from the Morris G. Steen, Jr. Science Learning Center (Building 34).

Information about the nature center is available from the NFCC Science Department, (850) 973-1645, or online at www.nfcc.edu/communityprograms/nature-center.



Marshall W. Hamilton Library

The Marshall W. Hamilton Library at NFCC (Bldg. 4) offers a wealth of resources necessary for support of student learning both on site and at a distance. The Library features wireless Internet access indoors and out. Online resources consist of a catalog, full-text periodical databases and electronic books, email reference, and electronic renewal of library materials.

The Library provides comfortable and attractive surroundings for use of collections and encourages casual reading and browsing as well as serious research. Tables and small group areas offer various study settings and convenient access to collections. Thirty-nine computers allow students access to the Internet, email and the Microsoft Office suite of programs. A classroom houses full presentation equipment and a computer lab. The conference room offers comfortable seating where students can take advantage of a quiet study space or reserve it for larger study groups and meetings. Here students can also view DVDs or use the listening area for music CDs.

The library collections include 33,000 print books, 30,000 electronic books, over 100 electronic databases, 24 periodical subscriptions, and over 800 DVDs. The library website (www.nfcc.edu/library) provides an information portal for access to the library catalog, full-text databases, electronic books and library information. Professional librarians are willing to assist students with any research questions or help with library resources.



Van H. Priest Auditorium



The original Van H. Priest Community Center was erected in 1969 and dedicated in 1976. The Center was destroyed by a tornado in 1988. In 1991 a new center was “rebuilt to serve the people of Hamilton, Jefferson, Lafayette, Madison, Suwannee and Taylor Counties” and named Van H. Priest Auditorium.

Van H. Priest Auditorium (VHP) is home to NFCC graduation ceremonies, performances of the NFCC Artist Series and NFCC Community Theater, various other college activities and is rented for a variety of community events throughout the year. VHP seats 580 and has a performing stage with light and sound technical capabilities under the direction of experienced technical personnel. The Auditorium also has a lobby, ticket area, dressing rooms and loading dock.

The NFCC Artist Series presented its first program in 1959. Since that time it has continued to grow and bring excellent performing arts and arts education events to the community. Performances range from classical to contemporary and over the years, thousands have enjoyed shows as varied as classical concerts, big band sounds, ballet, jazz and blues, country and rock tributes, children’s theater events, and more. Performances are held at Van H. Priest Auditorium, located on the NFCC campus in Madison, Fla. For more information about the auditorium call (850) 973-9429 or visit www.nfcc.edu/community-programs/van-h-priest.



Wardlaw-Smith-Goza Conference Center



The NFCC Wardlaw-Smith-Goza Conference Center, listed in the Historic American Building Survey and the National Register of Historic Places, is a stately mansion representative of the classical revival architectural style popular during the nineteenth century. Benjamin Wardlaw, a prominent Madison resident, built the house in 1860. After 1871, succeeding members of the Chandler Holmes Smith family owned the house for over 100 years. In 1978, Mr. and Mrs. William M. Goza acquired the property and restored it to the beautiful historical treasure it is today. NFCC received ownership of the property in 1988 through a legislative appropriation to use the mansion as a conference and cultural center for the six counties served by the College.

For more information call (850) 973-9414 or visit

<http://www.nfcc.edu/community-programs/wardlaw-smith-goza-conf-center>.



NFCC

Campus Life

Student Clubs and Organizations

NFCC provides a variety of opportunities for students to participate in College-sponsored student organizations. The following organizations allow students with similar interests a forum for discussing these interests and collaborating on projects to enhance learning in these areas.

- Art Club
- Astronomy Club
- Business Club
- Health Occupations Students of America (HOSA)
- Phi Theta Kappa (PTK)
- Save Our Animal Resources (SOAR)
- Sentinel Service Corp
- Student Government Association (SGA)
- Young Engineers Club



Students having common interests may form other clubs, groups, or organizations as approved by the Student Government Association and the Coordinator of Student Activities. Such activities may be related to courses, sports, service to the college and the community, publications, religion, and social life.

Community Theatre



Whether one desires the spotlight or enjoys being part of the backstage fellowship, the NFCC Sentinel Upstage Players has opportunities for students and community members alike. At least one major production is held in the Van H. Priest Auditorium each year, and auditions are open to the public.

Participants gain experience in acting, set construction, and design, and the technical aspects of the theater, such as lighting and sound. Audition dates are posted on campus and in the local newspapers. For information call (850) 973-9481 or visit

www.nfcc.edu/community-programs/community-theatre.

Performing Artist Series

The College presents a number of artists during the school year including musical groups, dance troupes and theatrical groups. Students may purchase tickets at discounted rates. Information about the NFCC Artist Series is available at www.nfcc.edu/community-programs/artist-series or contact the NFCC College Advancement Office at (850) 973-1653 or ArtistSeries@nfcc.edu.

Community Education

The Office of Student Activities offers a wide array of classes. These non-credit/non-certificate classes vary in length and cost. Offerings change from semester to semester. For a complete listing of classes, please refer to the Community Education web page at www.nfcc.edu/community-programs/community-education or call (850) 973-9481. There are no enrollment requirements for these classes. However, depending on the class, there may be some age restrictions.



Classes include, but are not limited to:

- Health and Fitness Classes
- Hunter Safety Classes
- Private Guitar Lessons
- Summer Camps for Children

NFCC is also a Community Training Center offering American Heart Association CPR courses on an as-needed basis.

Education to Go (ed2go) Online Non-Credit Classes

This program offers many online non-credit classes for the general public that are available all year in six-week blocks with two lessons per week. All classes are instructor facilitated. The variety of classes changes from term to term and enrollment dates are limited. For course descriptions and enrollment procedures, please refer to the ed2go schedule available online at the NFCC website (www.nfcc.edu) or call (850) 973-9481.

Program Courses

- ✓ Art, History, Psychology, & Literature
- ✓ Business and Accounting
- ✓ Certification Prep
- ✓ Child Care & Parenting
- ✓ Computer & Programming
- ✓ Desktop Publishing & Imaging
- ✓ Digital Photography & Digital Video
- ✓ Entertainment Industry Careers
- ✓ Family & Personal Enrichment
- ✓ Grant Writing & Nonprofit Management
- ✓ Health Care, Nutrition & Fitness
- ✓ Internet
- ✓ Languages
- ✓ Law and Legal Careers
- ✓ Math, Philosophy, & Science
- ✓ Personal & Career



Campus Security

Campus Security at North Florida Community College provides a safe and secure environment for students, faculty, staff, and guests.

Campus Escort

Campus Security will provide escorts (by foot or vehicle), upon request, to and from campus buildings and parking lots for students and employees. If you want someone to walk with you or you need a ride around Campus call Campus Security at 850-973-0280.

Campus Alerts

We now have the ability to send text messages to cell phones in order to notify NFCC students and employees in the event of a campus-wide emergency or closing due to inclement weather. Registering your phone takes only a few minutes, and you may register two devices as well as an alternate email address. This system will only be used for emergency messages at this time.

Firearms and Weapons Prohibitions

A safe and secure environment is a priority for fulfilling the mission of North Florida Community College. North Florida Community College is committed to maintaining a campus that is free of violence. This obligation includes eliminating recognized hazards from the campus community that contribute to violence or serious harm.

2013 Crime Statistics

| Arrests – On-Campus | 2010 | 2011 | 2012 | 2013 |
|--|-------------|-------------|-------------|-------------|
| Illegal Weapons Possession | 0 | 0 | 0 | 0 |
| Drug Law Violations | 0 | 0 | 0 | 0 |
| Liquor Law Violations | 0 | 0 | 0 | 0 |
| Criminal Offenses – On-Campus | 2010 | 2011 | 2012 | 2013 |
| Murder/Non-negligent Manslaughter | 0 | 0 | 0 | 0 |
| Negligent Manslaughter | 0 | 0 | 0 | 0 |
| Sex Offenses – Forcible | 0 | 0 | 0 | 0 |
| Sex Offenses – Non-forcible (incest and statutory rape only) | 0 | 0 | 0 | 0 |
| Robbery | 0 | 0 | 0 | 0 |
| Aggravated Assault | 0 | 0 | 0 | 0 |
| Burglary | 0 | 1 | 1 | 1 |
| Motor Vehicle Theft | 0 | 0 | 0 | 0 |
| Arson | 0 | 0 | 0 | 0 |

- The crime data reported by the institutions have not been subjected to independent verification by the U.S. Department of Education. Therefore, the Department cannot vouch for the accuracy of the data reported here.
- These data do not include incidents that: (a) took place off campus on public property immediately adjacent to and accessible from the Campus; (b) took place on a noncampus building or property owned or controlled by a student organization that is officially recognized by the institution; or (c) incidents at buildings/property owned or controlled by an institution but is not contiguous to the institution. For further information, see <http://ope.ed.gov/security>.

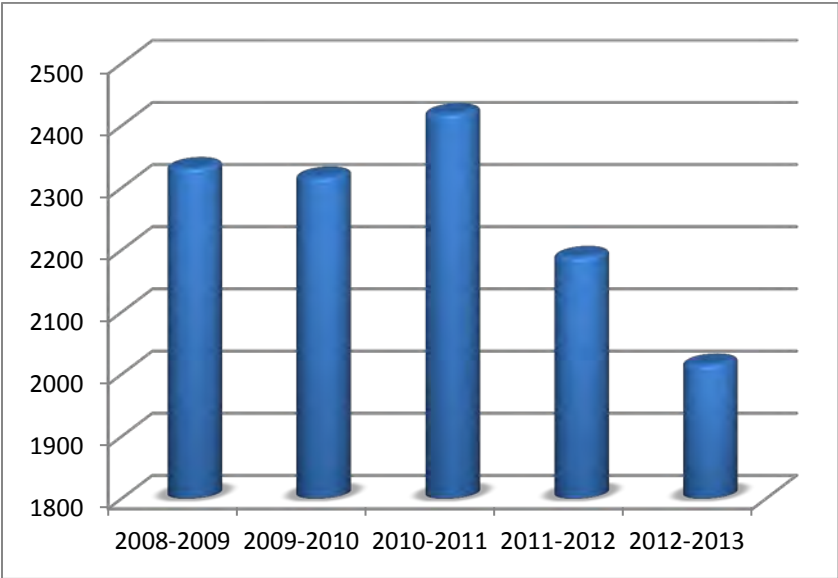


NFCC

The Student Population

Total Student Headcount

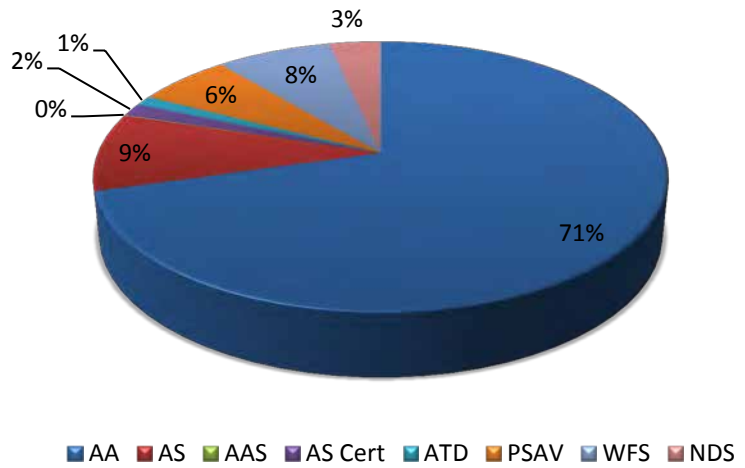
| 2009-2010 | 2010-2011 | 2011-2012 | 2012-2013 | 2013-2014 |
|-----------|-----------|-----------|-----------|-----------|
| 2317 | 2419 | 2189 | 2016 | 1805 |



Enrollment by Program

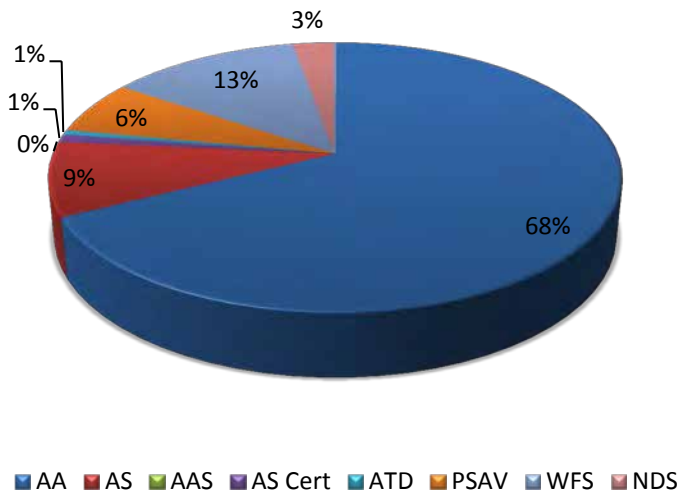
Fall 2013

| Program | Number Enrolled | Percentage |
|--------------|-----------------|------------|
| AA | 911 | 71% |
| AS | 121 | 9% |
| AAS | 1 | 0% |
| AS Cert | 20 | 2% |
| ATD | 15 | 1% |
| PSAV | 81 | 6% |
| WFS | 99 | 8% |
| NDS | 44 | 3% |
| Total | 1292 | |



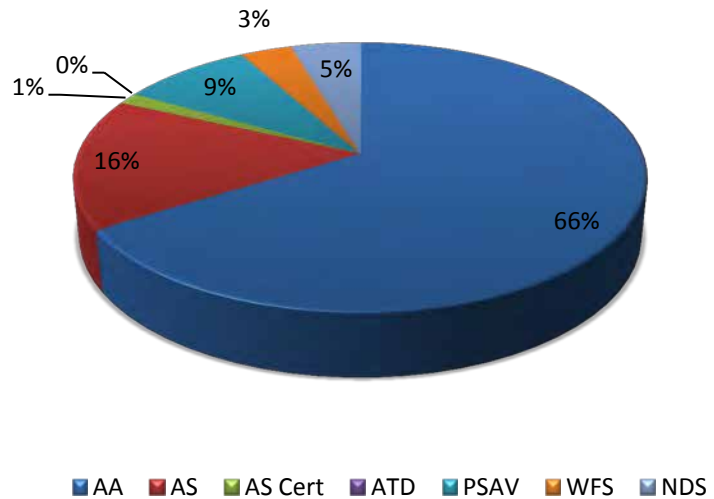
Spring 2014

| Program | Number Enrolled | Percentage |
|--------------|-----------------|------------|
| AA | 835 | 68% |
| AS | 110 | 9% |
| AAS | 0 | 0% |
| AS Cert | 12 | 1% |
| ATD | 7 | 1% |
| PSAV | 80 | 6% |
| WFS | 157 | 13% |
| NDS | 35 | 3% |
| Total | 1236 | |



Summer 2014

| Program | Number Enrolled | Percentage |
|--------------|-----------------|------------|
| AA | 386 | 66% |
| AS | 92 | 16% |
| AS Cert | 8 | 1% |
| ATD | 0 | 0% |
| PSAV | 51 | 9% |
| WFS | 20 | 3% |
| NDS | 27 | 5% |
| Total | 584 | |



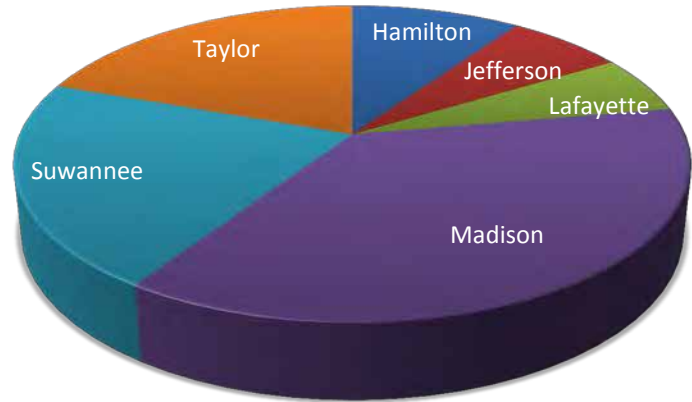
Legend of programs:

- AA: Associate in Arts
- AS: Associate in Science
- AAS: Associate in Applied Science
- ATD: Applied Technical Diploma
- PSAV: Post-Secondary Adult Vocational Certificate
- WFS: Workforce / Supplemental
- NDS: Non-Degree Seeking

County Enrollment by Term

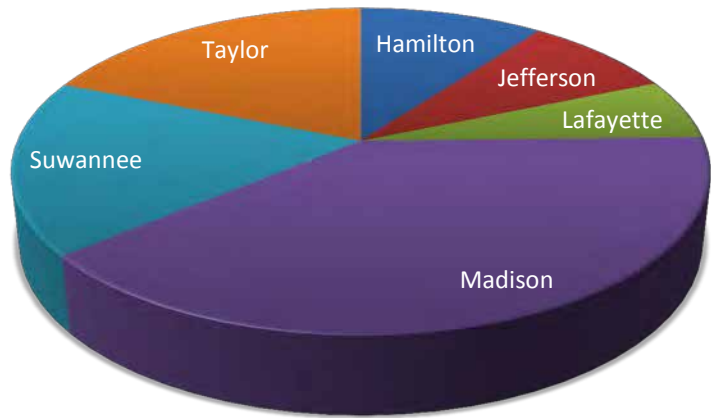
Fall 2013

| County | Number Enrolled | Percentage |
|--------------|-----------------|------------|
| Hamilton | 114 | 8.8% |
| Jefferson | 79 | 6.1% |
| Lafayette | 70 | 5.4% |
| Madison | 438 | 33.9% |
| Suwannee | 250 | 19.4% |
| Taylor | 231 | 17.9% |
| Other FL | 87 | 6.7% |
| Out of State | 22 | 1.7% |
| Total | 1291 | |



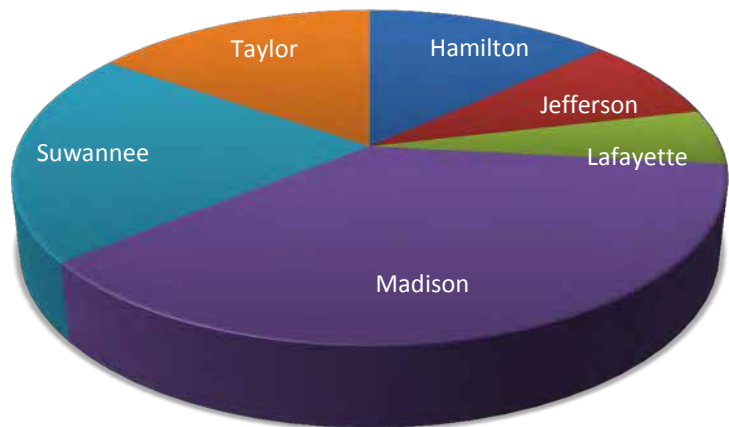
Spring 2014

| County | Number Enrolled | Percentage |
|--------------|-----------------|------------|
| Hamilton | 115 | 9.3% |
| Jefferson | 95 | 7.7% |
| Lafayette | 68 | 5.5% |
| Madison | 443 | 35.9% |
| Suwannee | 196 | 15.9% |
| Taylor | 212 | 17.2% |
| Other FL | 86 | 7.0% |
| Out of State | 20 | 1.6% |
| Total | 1235 | |



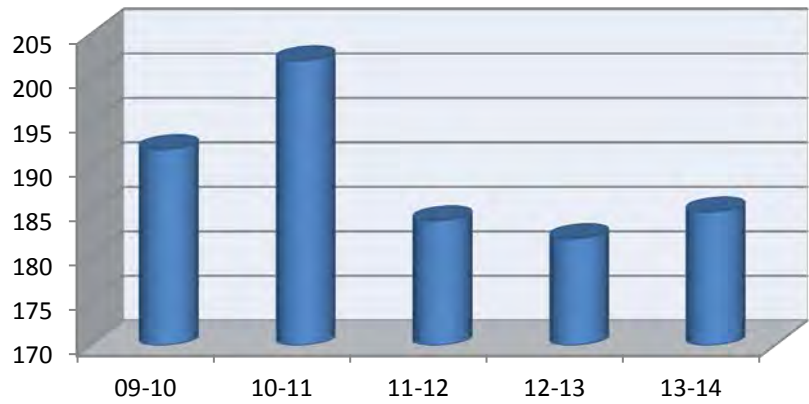
Summer 2014

| County | Number Enrolled | Percentage |
|--------------|-----------------|------------|
| Hamilton | 72 | 12.3% |
| Jefferson | 44 | 7.5% |
| Lafayette | 29 | 5.0% |
| Madison | 203 | 34.8% |
| Suwannee | 112 | 19.2% |
| Taylor | 83 | 14.2% |
| Other FL | 27 | 4.6% |
| Out of State | 13 | 2.2% |
| Total | 583 | |

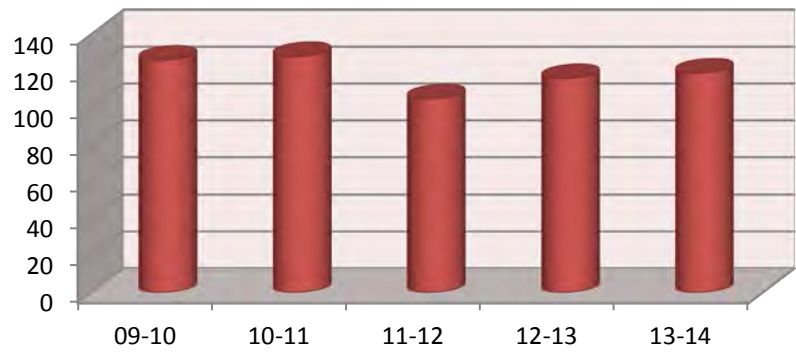


5 Year County Enrollment

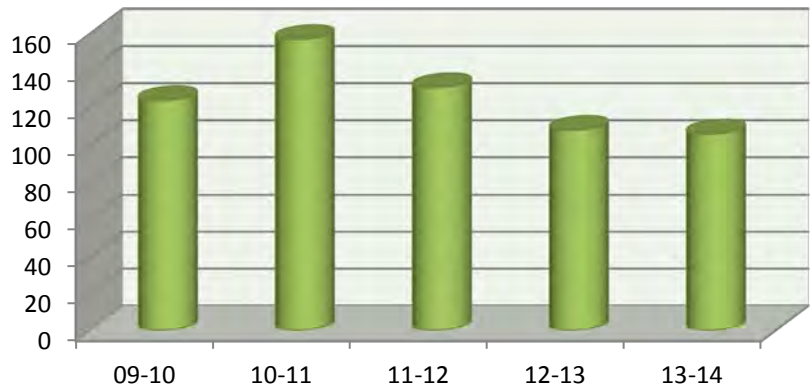
| Hamilton | |
|-----------------|-----|
| 09-10 | 192 |
| 10-11 | 202 |
| 11-12 | 184 |
| 12-13 | 182 |
| 13-14 | 185 |



| Jefferson | |
|------------------|-----|
| 09-10 | 126 |
| 10-11 | 128 |
| 11-12 | 105 |
| 12-13 | 116 |
| 13-14 | 119 |

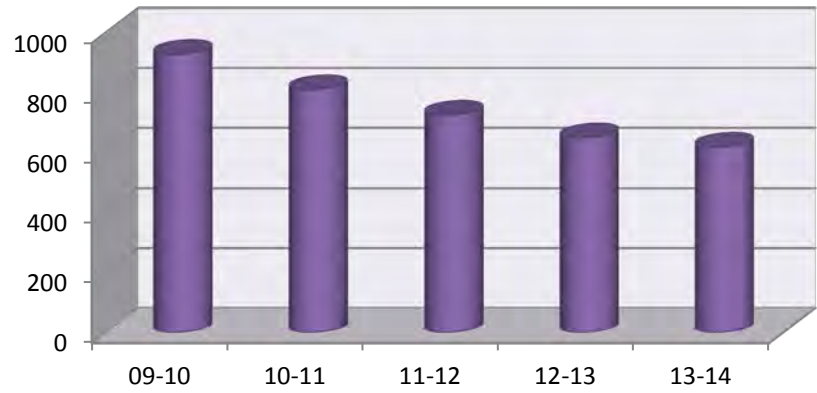


| Lafayette | |
|------------------|-----|
| 09-10 | 124 |
| 10-11 | 157 |
| 11-12 | 131 |
| 12-13 | 108 |
| 13-14 | 106 |



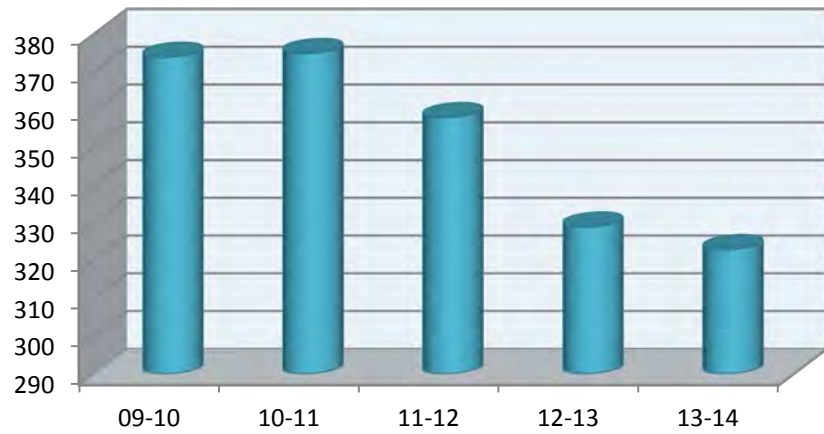
Madison

| | |
|-------|-----|
| 09-10 | 928 |
| 10-11 | 810 |
| 11-12 | 725 |
| 12-13 | 649 |
| 13-14 | 618 |



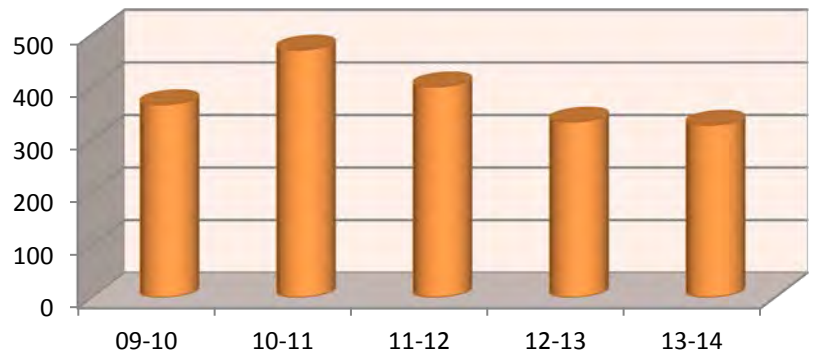
Suwannee

| | |
|-------|-----|
| 09-10 | 374 |
| 10-11 | 375 |
| 11-12 | 358 |
| 12-13 | 329 |
| 13-14 | 323 |

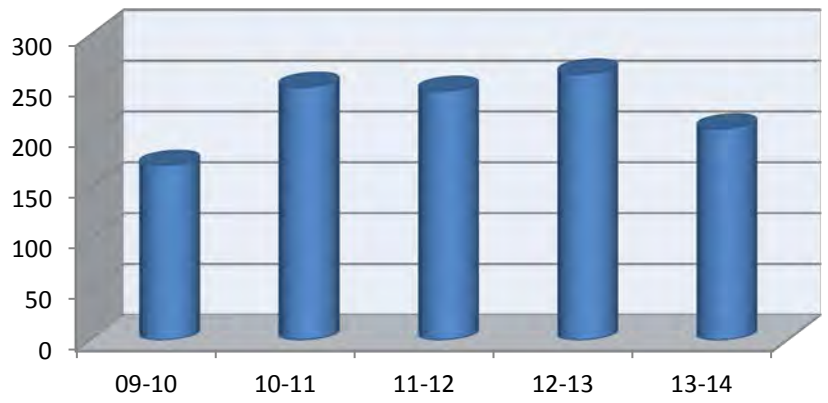


Taylor

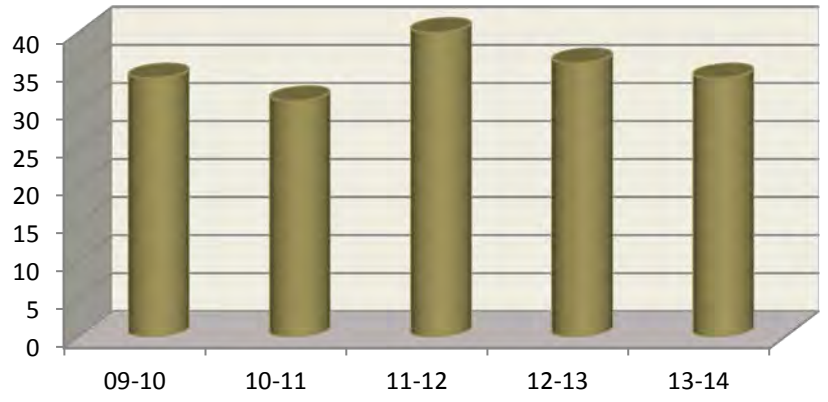
| | |
|-------|-----|
| 09-10 | 367 |
| 10-11 | 471 |
| 11-12 | 401 |
| 12-13 | 334 |
| 13-14 | 328 |



| Other Florida | |
|----------------------|-----|
| 09-10 | 172 |
| 10-11 | 249 |
| 11-12 | 245 |
| 12-13 | 262 |
| 13-14 | 208 |

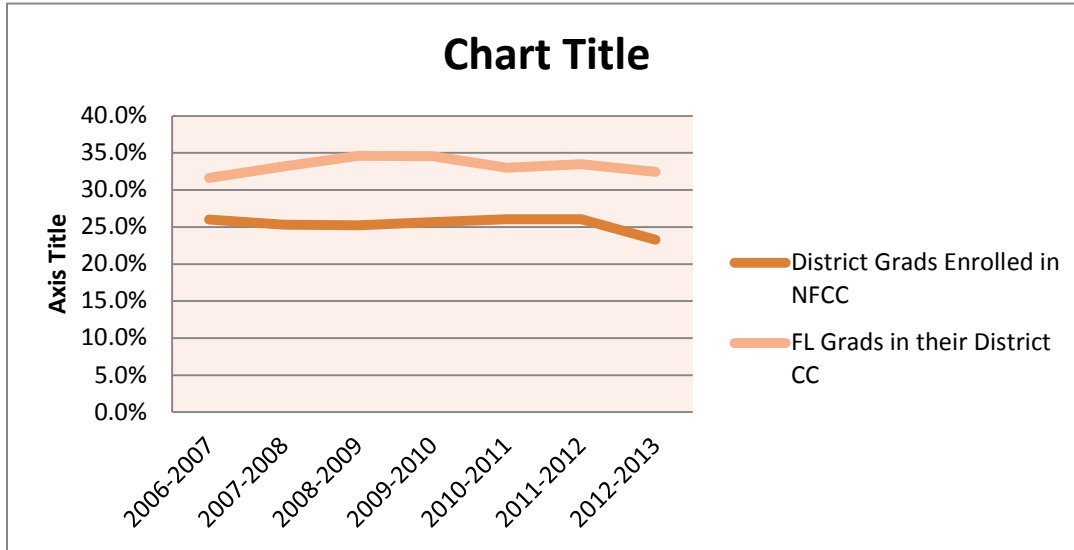


| Out of State | |
|---------------------|----|
| 09-10 | 34 |
| 10-11 | 31 |
| 11-12 | 40 |
| 12-13 | 36 |
| 13-14 | 34 |



District High School Graduates Enrolled

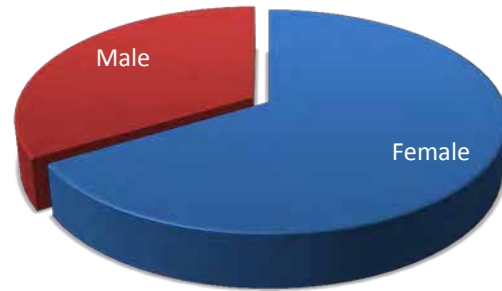
| | 2006-2007 | 2007-2008 | 2008-2009 | 2009-2010 | 2010-2011 | 2011-2012 | 2012-2013 |
|--|-----------|-----------|-----------|-----------|-----------|-----------|-----------|
| District Grads Enrolled in NFCC | 26.0% | 25.3% | 25.2% | 25.7% | 26.0% | 26.0% | 23.3% |
| FL Grads in their District CC | 31.6% | 33.2% | 34.6% | 34.6% | 33.0% | 33.5% | 32.5% |



Enrollment by Gender

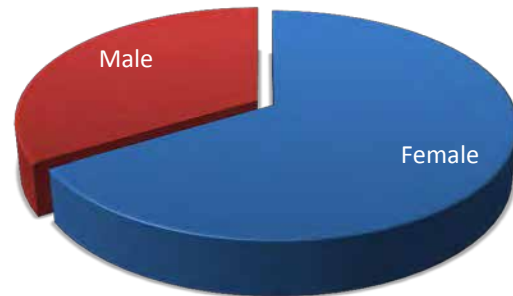
Fall 2013

| | | |
|---------------|-----|-----|
| Female | 856 | 66% |
| Male | 435 | 34% |



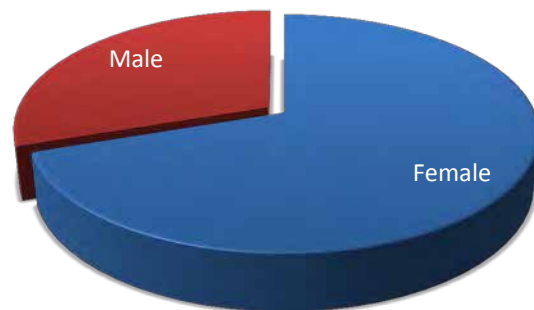
Spring 2014

| | | |
|---------------|-----|-----|
| Female | 814 | 66% |
| Male | 414 | 34% |



Summer 2014

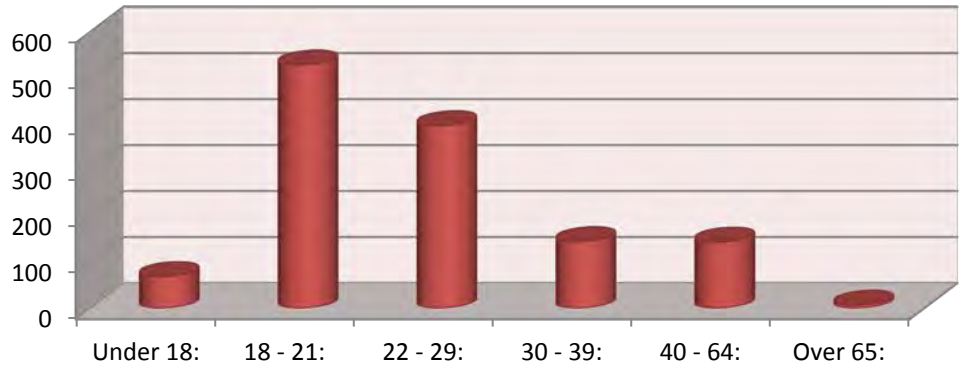
| | | |
|---------------|-----|-----|
| Female | 406 | 70% |
| Male | 176 | 30% |



Enrollment by Age

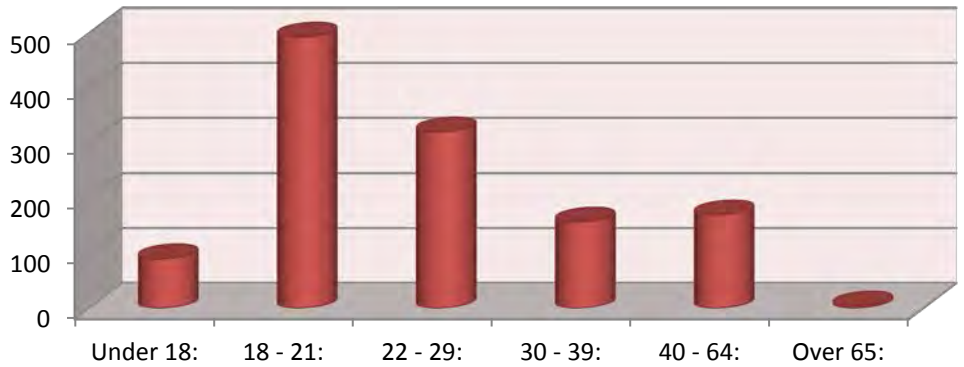
Fall 2013

| | |
|---------------------|-------------|
| Under 18: | 69 |
| 18 - 21: | 529 |
| 22 - 29: | 397 |
| 30 - 39: | 145 |
| 40 - 64: | 144 |
| Over 65: | 7 |
| Total: | 1291 |
| Average Age: | 26 |



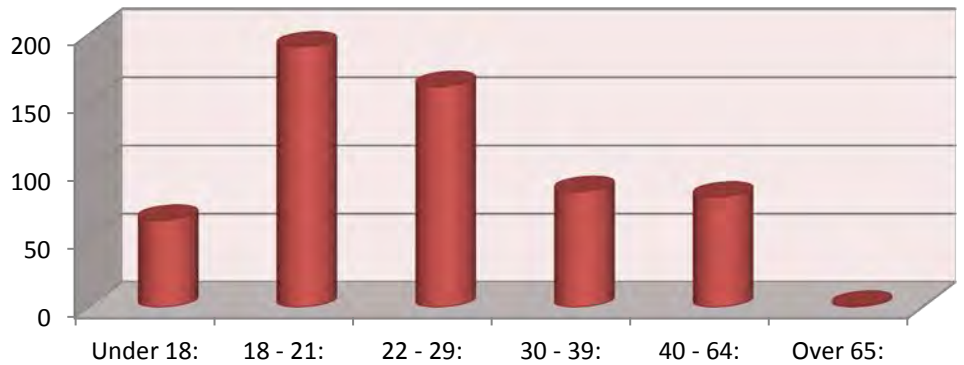
Spring 2014

| | |
|---------------------|-------------|
| Under 18: | 90 |
| 18 - 21: | 493 |
| 22 - 29: | 320 |
| 30 - 39: | 157 |
| 40 - 64: | 170 |
| Over 65: | 4 |
| Total: | 1234 |
| Average Age: | 26 |



Summer 2014

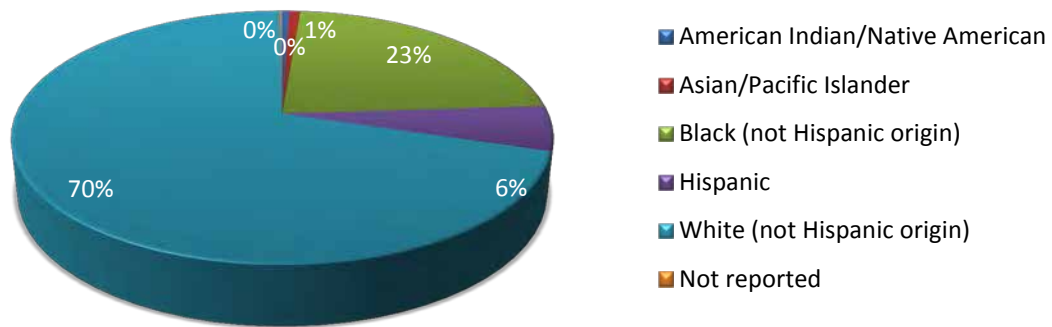
| | |
|---------------------|------------|
| Under 18: | 64 |
| 18 - 21: | 191 |
| 22 - 29: | 162 |
| 30 - 39: | 85 |
| 40 - 64: | 81 |
| Over 65: | 1 |
| Total: | 584 |
| Average Age: | 27 |



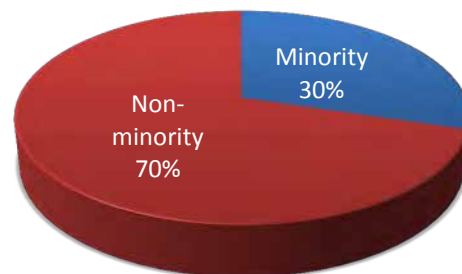
Enrollment by Ethnicity

FALL 2013

| Ethnicity | Number | Percent |
|---------------------------------|-------------|---------|
| American Indian/Native American | 7 | 1% |
| Asian/Pacific Islander | 10 | 1% |
| Black (not Hispanic origin) | 293 | 23% |
| Hispanic | 74 | 6% |
| White (not Hispanic origin) | 906 | 70% |
| Not reported | 2 | 0% |
| Total | 1292 | |

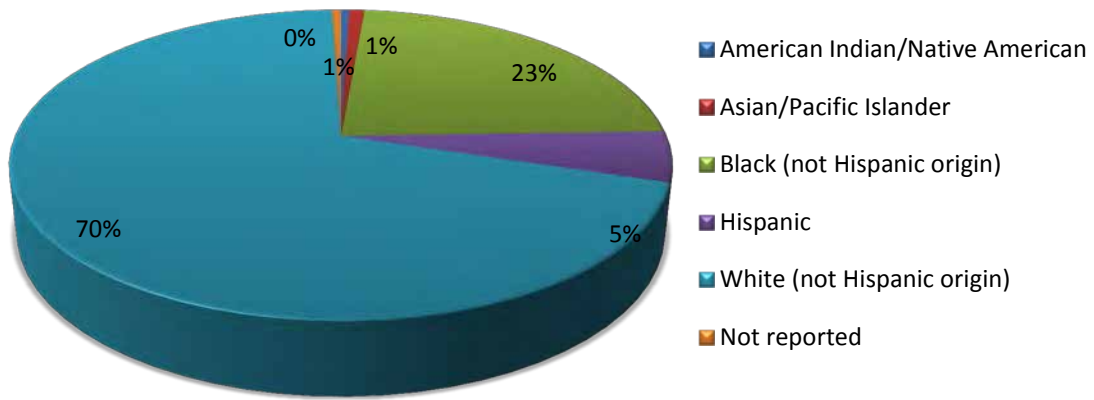


| | Number |
|---------------------|--------|
| Total minorities: | 384 |
| Total Non-minority: | 906 |

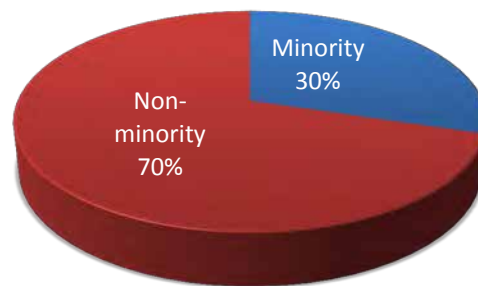


SPRING 2014

| Ethnicity | Number | Percent |
|---------------------------------|-------------|---------|
| American Indian/Native American | 6 | 0% |
| Asian/Pacific Islander | 11 | 1% |
| Black (not Hispanic origin) | 286 | 23% |
| Hispanic | 65 | 5% |
| White (not Hispanic origin) | 862 | 70% |
| Not reported | 6 | 0% |
| Total | 1236 | |

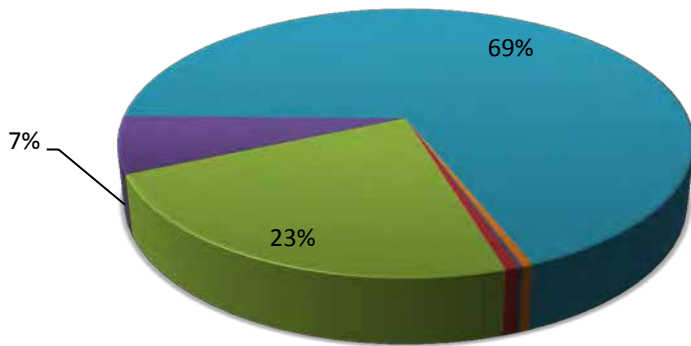


| | Number |
|---------------------|--------|
| Total minorities: | 368 |
| Total Non-minority: | 862 |



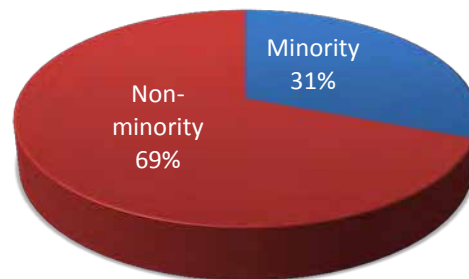
SUMMER 2014

| Ethnicity | Number | Percent |
|---------------------------------|------------|---------|
| American Indian/Native American | 1 | 0.2% |
| Asian/Pacific Islander | 4 | 1% |
| Black (not Hispanic origin) | 135 | 23% |
| Hispanic | 40 | 7% |
| White (not Hispanic origin) | 401 | 69% |
| Not reported | 3 | 1% |
| Total | 584 | |



- American Indian/Native American
- Asian/Pacific Islander
- Black (not Hispanic origin)
- Hispanic
- White (not Hispanic origin)
- Not reported

| | Number |
|---------------------|--------|
| Total minorities: | 180 |
| Total Non-minority: | 401 |



Enrollment Schedule by Day and Time

Fall 2013

| | Monday | Tuesday | Wednesday | Thursday | Friday | Saturday | Sunday |
|--------------------|--------|---------|-----------|----------|--------|----------|--------|
| 7:30 - 9:15 a.m. | 419 | 357 | 419 | 378 | 171 | 47 | 22 |
| 9:15 - 10:45 a.m. | 305 | 274 | 299 | 254 | 33 | 0 | 0 |
| 10:45 - 12:15 p.m. | 166 | 120 | 166 | 123 | 22 | 0 | 0 |
| 12:15 - 1:45 p.m. | 278 | 212 | 319 | 206 | 68 | 25 | 0 |
| 1:45 - 4:00 p.m. | 104 | 154 | 104 | 116 | 0 | 0 | 0 |
| 4:00 p.m. or later | 168 | 170 | 145 | 149 | 65 | 0 | 0 |

Spring 2014

| | Monday | Tuesday | Wednesday | Thursday | Friday | Saturday | Sunday |
|--------------------|--------|---------|-----------|----------|--------|----------|--------|
| 7:30 - 9:15 a.m. | 352 | 398 | 392 | 366 | 189 | 58 | 8 |
| 9:15 - 10:45 a.m. | 205 | 208 | 210 | 197 | 49 | 0 | 0 |
| 10:45 - 12:15 p.m. | 193 | 157 | 193 | 158 | 93 | 0 | 0 |
| 12:15 - 1:45 p.m. | 199 | 155 | 185 | 161 | 33 | 30 | 0 |
| 1:45 - 4:00 p.m. | 195 | 85 | 181 | 113 | 0 | 0 | 0 |
| 4:00 p.m. or later | 123 | 162 | 114 | 133 | 50 | 0 | 0 |

Summer 2014

| | Monday | Tuesday | Wednesday | Thursday | Friday | Saturday | Sunday |
|--------------------|--------|---------|-----------|----------|--------|----------|--------|
| 7:30 - 9:15 a.m. | 144 | 172 | 153 | 193 | 17 | 1 | 1 |
| 9:15 - 10:45 a.m. | 14 | 73 | 14 | 73 | 0 | 0 | 0 |
| 10:45 - 12:15 p.m. | 0 | 0 | 0 | 0 | 0 | 0 | 0 |
| 12:15 - 1:45 p.m. | 31 | 92 | 31 | 92 | 0 | 0 | 0 |
| 1:45 - 4:00 p.m. | 11 | 11 | 11 | 11 | 0 | 0 | 0 |
| 4:00 p.m. or later | 19 | 19 | 18 | 19 | 0 | 0 | 0 |

Instructor to Student Ratio

| | Students | Courses | Instructors | Ratio |
|------------------|-----------------|----------------|--------------------|--------------|
| 2009-2010 | 2317 | 634 | 105 | 22 |
| 2010-2011 | 2423 | 687 | 110 | 22 |
| 2011-2012 | 2189 | 620 | 102 | 21 |
| 2012-2013 | 2016 | 593 | 85 | 24 |
| 2013-2014 | 1805 | 510 | 79 | 23 |

Average Class Size

| 2012-2013 | Credit | PSAV | College Prep |
|------------------|---------------|-------------|---------------------|
| Fall | 21 | 16 | 19 |
| Spring | 21 | 19 | 24 |
| Summer | 16 | 19 | 13 |

| 2013-2014 | Credit | PSAV | College Prep |
|------------------|---------------|-------------|---------------------|
| Fall | 22 | 15 | 15 |
| Spring | 21 | 13 | 15 |
| Summer | 20 | 13 | 11 |

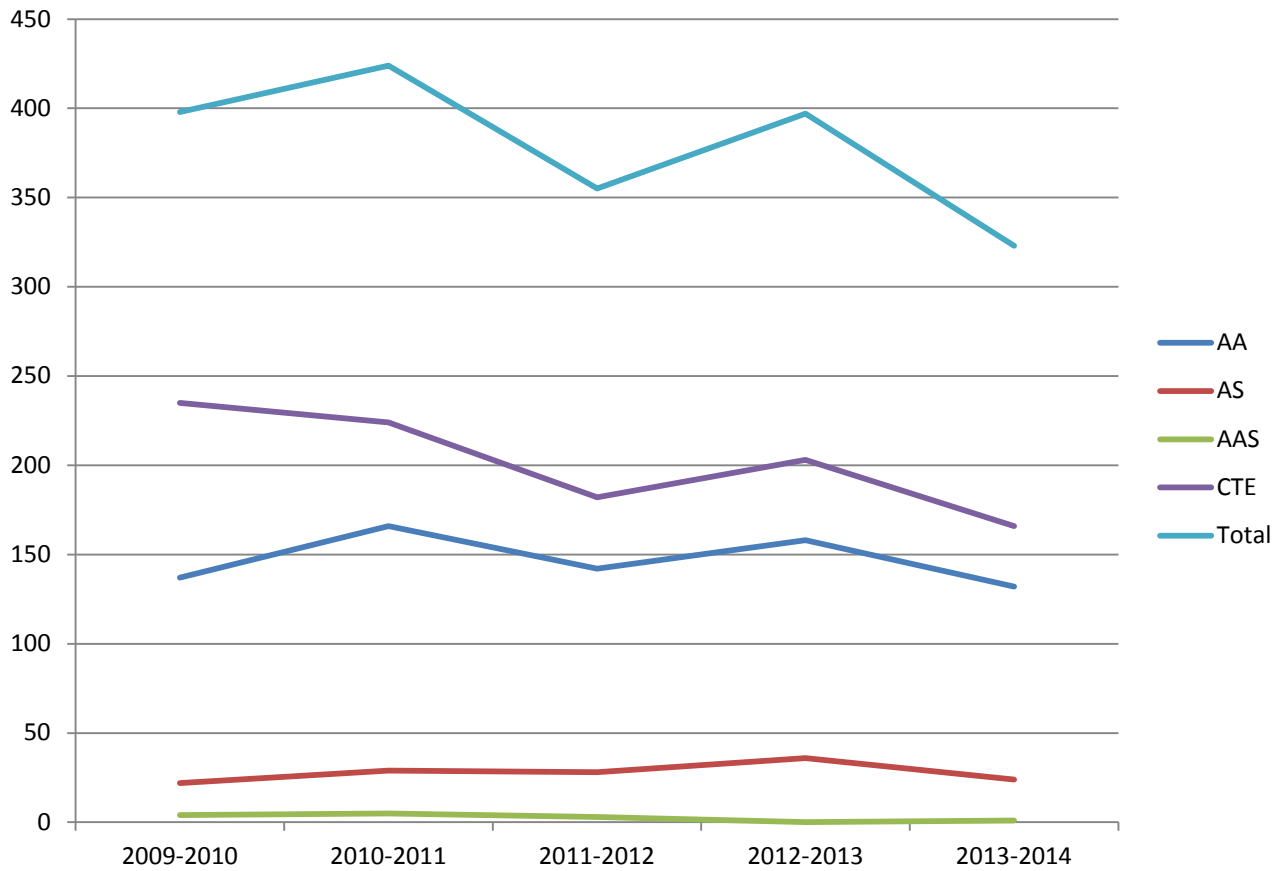


NFCC

Student Success

Degrees Awarded

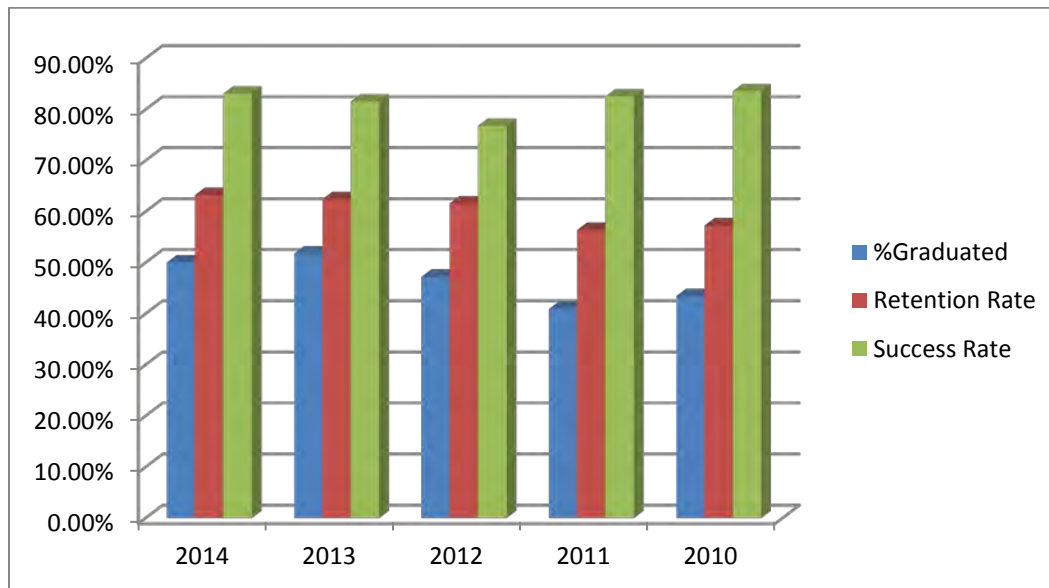
| | 2009-2010 | 2010-2011 | 2011-2012 | 2012-2013 | 2013-2014 |
|--------------|-----------|-----------|-----------|-----------|-----------|
| AA | 137 | 166 | 142 | 158 | 132 |
| AS | 22 | 29 | 28 | 36 | 24 |
| AAS | 4 | 5 | 3 | 0 | 1 |
| CTE | 235 | 224 | 182 | 203 | 166 |
| Total | 398 | 424 | 355 | 397 | 323 |



First Time in College Retention & Success

| | Cohort | %Graduated | Retention Rate | Success Rate |
|-------------|---------------|-------------------|-----------------------|---------------------|
| 2014 | 136 | 50.00% | 63.24% | 83.09% |
| 2013 | 141 | 51.77% | 62.41% | 81.56% |
| 2012 | 125 | 47.20% | 61.60% | 76.80% |
| 2011 | 149 | 40.90% | 56.38% | 82.55% |
| 2010 | 152 | 43.42% | 57.24% | 83.55% |

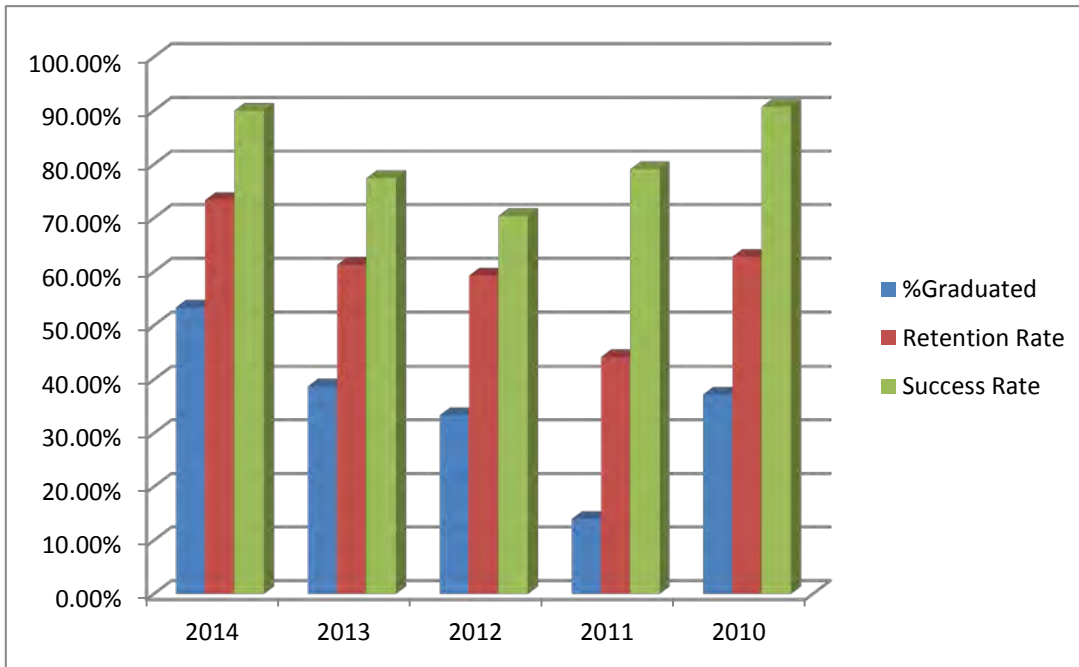
2014 tracking period Fall 2010 through 2014
 2013 tracking period Fall 2009 through 2013
 2012 tracking period Fall 2008 through 2012
 2011 tracking period Fall 2007 through 2011
 2010 tracking period Fall 2006 through 2010



College Preparatory Retention & Success

| | Cohort | %Graduated | Retention Rate | Success Rate |
|------|---------------|-------------------|-----------------------|---------------------|
| 2014 | 30 | 53.33% | 73.33% | 90.00% |
| 2013 | 31 | 38.71% | 61.29% | 77.42% |
| 2012 | 27 | 33.33% | 59.26% | 70.37% |
| 2011 | 43 | 13.95% | 44.19% | 79.07% |
| 2010 | 43 | 37.21% | 62.79% | 90.70% |

2014 tracking period Fall 2010 through 2014
 2013 tracking period Fall 2009 through 2013
 2012 tracking period Fall 2008 through 2012
 2011 tracking period Fall 2007 through 2011
 2010 tracking period Fall 2006 through 2010



Source: Accountability Outcome Measure 4 Part 2

Vocational Placement

| | 2011-2012 | | | 2010-2011 | | | 2009-2010 | | |
|---|------------|------------|--------------|-----------|-----------|---------------|------------|------------|--------------|
| | Pool | Placed | % Placed | Pool | Placed | % Placed | Pool | Placed | % Placed |
| Emergency Medical Technician | 25 | 17 | 68.00 | 13 | 13 | 100.00 | 32 | 22 | 68.75 |
| Paramedic | 20 | 18 | 90.00 | 5 | 5 | 100.00 | 9 | 7 | 77.78 |
| Emergency Medical Services - AS Degree | 1 | 1 | 100.00 | 2 | 2 | 100.00 | 3 | 3 | 100.00 |
| Practical Nursing | 34 | 34 | 100.00 | 6 | 6 | 100.00 | 18 | 18 | 100.00 |
| Patient Care Technician | 8 | 8 | 100.00 | 19 | 19 | 100.00 | 32 | 30 | 93.75 |
| Nursing | 19 | 19 | 100.00 | 1 | 1 | 100.00 | 17 | 17 | 100.00 |
| Early Childhood Education - AS Degree | 0 | 0 | 0.00 | 1 | 1 | 100.00 | 1 | 1 | 100.00 |
| Early Childhood Education | 7 | 4 | 57.14 | 6 | 6 | 100.00 | 2 | 1 | 50.00 |
| Child Care Center Operations | 9 | 6 | 66.67 | 0 | 0 | 0.00 | 0 | 0 | 0.00 |
| Business Administration | 2 | 2 | 100.00 | 0 | 0 | 0.00 | 0 | 0 | 0.00 |
| Business Operations | 3 | 3 | 100.00 | 0 | 0 | 0.00 | 0 | 0 | 0.00 |
| Network Administrator | 0 | 0 | 0.00 | 0 | 0 | 0.00 | 0 | 0 | 0.00 |
| Administrative Assistant | 0 | 0 | 0.00 | 4 | 4 | 100.00 | 2 | 2 | 100.00 |
| Office Administration | 0 | 0 | 0.00 | 0 | 0 | 0.00 | 1 | 1 | 100.00 |
| Architectural Drafting | 0 | 0 | 0.00 | 2 | 2 | 100.00 | 4 | 4 | 100.00 |
| Mechanical Drafting | 0 | 0 | 0.00 | 0 | 0 | 0.00 | 4 | 2 | 50.00 |
| Digital Media/Multimedia Technology | 0 | 0 | 0.00 | 0 | 0 | 0.00 | 0 | 0 | 0.00 |
| Multimedia Authoring | 1 | 1 | 100.00 | 0 | 0 | 0.00 | 0 | 0 | 0.00 |
| Cisco CCNA Certificate | 0 | 0 | 0.00 | 0 | 0 | 0.00 | 0 | 0 | 0.00 |
| Correctional Officer | 6 | 5 | 83.33 | 6 | 6 | 100.00 | 18 | 17 | 94.44 |
| Criminal Justice Technology | 2 | 1 | 50.00 | 2 | 2 | 100.00 | 2 | 2 | 100.00 |
| Law Enforcement Officer | 10 | 7 | 70.00 | 6 | 6 | 100.00 | 17 | 16 | 94.12 |
| Correctional Officer to Law Enforcement Officer | 12 | 11 | 91.67 | 6 | 6 | 100.00 | 0 | 0 | 0.00 |
| Law Enforcement Officer to Correctional Officer | 0 | 0 | 0.00 | 0 | 0 | 0.00 | 0 | 0 | 0.00 |
| Total | 159 | 137 | 86.16 | 79 | 79 | 100.00 | 162 | 143 | 88.27 |

Source: Accountability Outcome Measure 3 Part 2



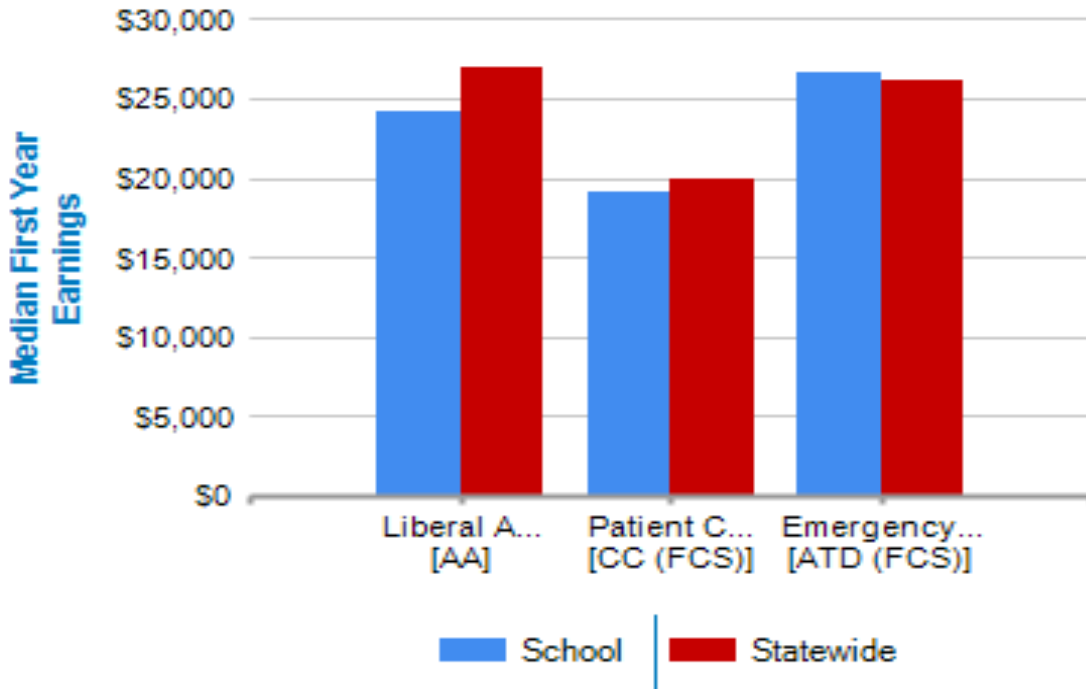
Economic Success Measures

1st Year Outcomes for 5 Graduating Classes 2007/08 - 2011/12

| Degree Level | | # of Graduates/ Completers | Total Found Employed Percent | Total Found Employed Full Time Percent | Median First Year Earnings | Found Continuing Education Percent | Public Assistance Percent |
|--|---|----------------------------|------------------------------|--|----------------------------|------------------------------------|---------------------------|
| Technical Certificate | 12 disclosable programs | 527 | 78% | 57% | \$32,214 | 39% | 21% |
| | Administrative Office Specialist | 13 | 23% | 8% | * | 46% | 85% |
| | Child Care Center Operations | 11 | 64% | 36% | * | 36% | 0% |
| | Correctional Officer | 92 | 86% | 66% | \$30,940 | 21% | 17% |
| | Correctional Officer to Law Enforcement Officer (Crossover) | 56 | 96% | 89% | \$35,158 | 41% | 0% |
| | Drafting (Architectural) | 18 | 56% | 33% | * | 44% | 0% |
| | Drafting (Mechanical) | 11 | 45% | 27% | * | 18% | 0% |
| | Early Childhood Education | 30 | 63% | 37% | \$19,068 | 43% | 40% |
| | Law Enforcement Officer | 87 | 75% | 63% | \$32,440 | 32% | 0% |
| | Law Enforcement Officer to Correctional Officer (Crossover) | * | 100% | 100% | * | 0% | 0% |
| | Patient Care Technician | 131 | 63% | 17% | \$19,200 | 63% | 35% |
| | Practical Nursing | 108 | 92% | 86% | \$33,328 | 24% | 10% |
| | Private Security Officer | * | 57% | 57% | * | 0% | 0% |
| Applied Technology Diploma | 1 disclosable programs | 129 | 78% | 52% | \$26,636 | 38% | 9% |
| | Emergency Medical Technology/Technician (EMT Paramedic) | 129 | 78% | 52% | \$26,636 | 38% | 9% |
| College Credit Certificate | 5 disclosable programs | 118 | 86% | 75% | \$44,580 | 28% | 0% |
| | Business Administration | * | 67% | 67% | * | 67% | 0% |
| | EMT | 29 | 72% | 55% | \$37,630 | 34% | 0% |
| | Paramedic | 85 | 89% | 81% | \$46,120 | 24% | 0% |
| | Executive Secretarial | * | 100% | 100% | * | 0% | 0% |
| Digital Media/Multimedia | * | 100% | 0% | * | 100% | 0% | |
| Associate in Applied Science Degree | 4 disclosable programs | 22 | 95% | 86% | \$37,720 | 59% | 0% |
| | Child Care Provider/Assistant | * | 100% | 83% | * | 50% | 0% |
| | Computer Systems Networking and Telecommunications | * | 0% | 0% | * | 0% | 0% |
| | Criminal Justice/Law Enforcement Administration | 14 | 100% | 93% | \$54,744 | 64% | 0% |
| Executive Secretarial | * | 100% | 100% | * | 100% | 0% | |
| Associate in Science | 4 disclosable programs | 116 | 71% | 61% | \$47,028 | 16% | 0% |
| | Business Administration | * | 0% | 0% | * | 100% | 0% |
| | Computer Systems Networking and Telecommunications | * | 0% | 0% | * | 0% | 0% |
| | Emergency Medical Services | 13 | 85% | 77% | \$46,742 | 46% | 0% |
| | Nursing, General | 100 | 71% | 61% | \$47,028 | 11% | 0% |
| Associate in Arts Degree | 1 disclosable programs | 692 | 53% | 28% | \$24,124 | 66% | 9% |
| | Liberal Arts and Sciences/Liberal Studies | 691 | 54% | 28% | \$24,124 | 66% | 9% |
| Educator Preparation Institute Certificate | 1 disclosable programs | 70 | 76% | 66% | \$35,472 | 4% | 0% |
| | Education, Other | 70 | 76% | 66% | \$35,472 | 4% | 0% |

Source: beyondeducation.org

Three Most Popular Disclosable Programs



Source: beyondeducation.org



NFCC Transfer Success

Mean cumulative grade-point averages for NFCC graduates who transfer to Florida public universities



| | 2008 | 2009 | 2010 | 2011 | 2012 |
|----------------------|------|------|------|------|------|
| NFCC Students | 3.00 | 2.93 | 2.95 | 2.86 | 2.93 |
| State average | 2.94 | 2.93 | 2.92 | 2.91 | 2.93 |

Source: Articulation Report Table 12

Top Universities Receiving NFCC Graduates

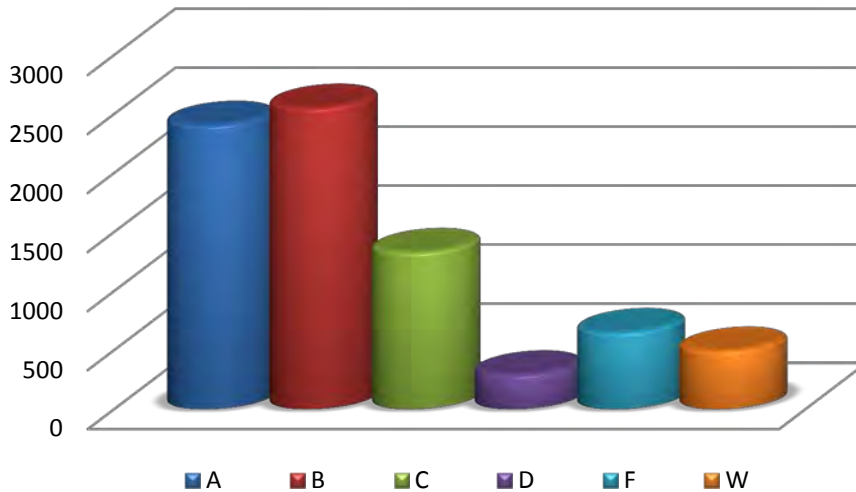
| University | Average GPA |
|--------------------|-------------|
| FSU – Tallahassee | 2.95 |
| FAMU – Tallahassee | 2.72 |
| UF – Gainesville | 3.19 |
| UCF – Orlando | 3.10 |
| UNF – Jacksonville | 2.88 |
| USF – Miami | 2.50 |

Source: Articulation Report Table 12

Grade Distribution

All Courses 2013-2014

| A | B | C | D | F | W | Total |
|------|------|------|-----|-----|-----|-------|
| 2406 | 2551 | 1328 | 292 | 650 | 493 | 7720 |



College Credit Courses 2013-2014

| A | B | C | D | F | W | Total |
|------|------|------|-----|-----|-----|-------|
| 2003 | 2083 | 1175 | 274 | 535 | 421 | 6491 |

College Prep Courses 2013-2014

| A | B | C | D | F | W | Total |
|----|-----|-----|----|----|----|-------|
| 46 | 134 | 117 | 18 | 95 | 54 | 464 |

PSAV Courses 2013-2014

| A | B | C | D | F | W | Total |
|----|-----|-----|----|----|----|-------|
| 46 | 134 | 117 | 18 | 95 | 54 | 464 |

Online Courses 2013-2014

| A | B | C | D | F | W | Total |
|-----|-----|-----|----|-----|-----|-------|
| 533 | 596 | 304 | 86 | 185 | 136 | 1840 |

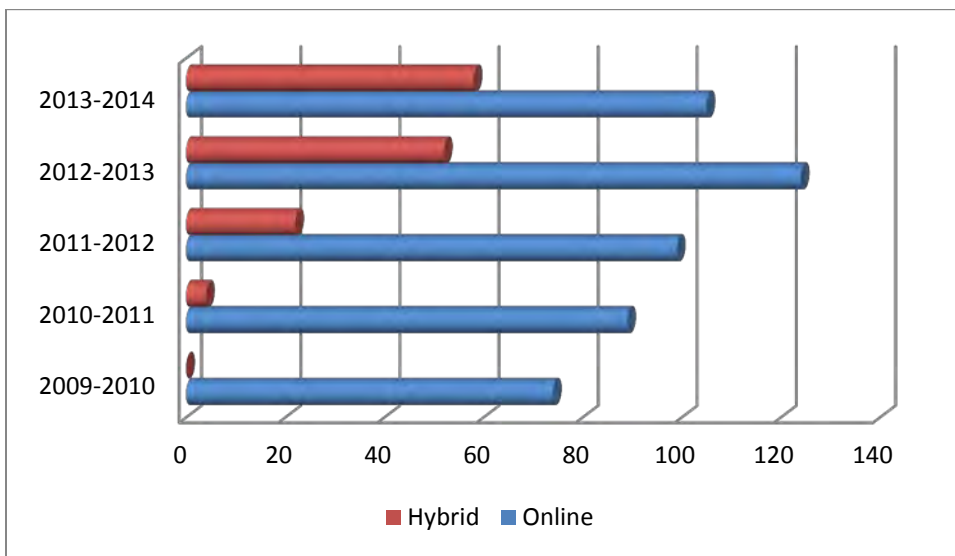


NFCC

Distance Learning

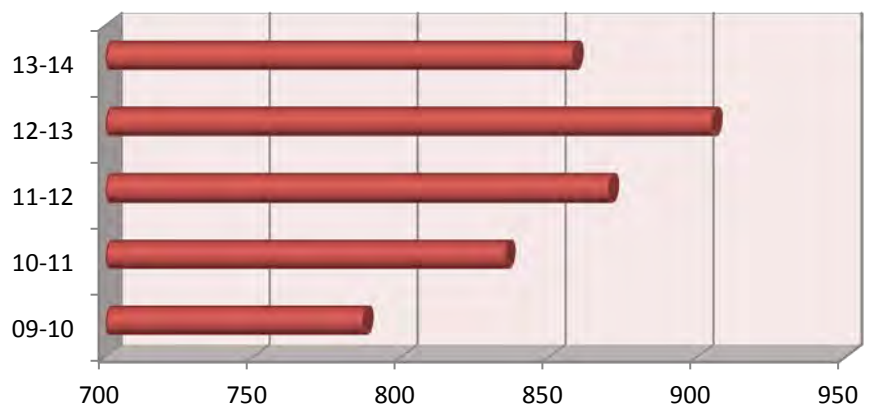
Number of Online Courses 2013-2014

| Year | Online | Hybrid |
|-----------|--------|--------|
| 2009-2010 | 74 | 0 |
| 2010-2011 | 89 | 4 |
| 2011-2012 | 99 | 22 |
| 2012-2013 | 124 | 52 |
| 2013-2014 | 105 | 40 |



Number of Online Students

| Year | # of students |
|-------|---------------|
| 09-10 | 787 |
| 10-11 | 835 |
| 11-12 | 870 |
| 12-13 | 905 |
| 13-14 | 858 |

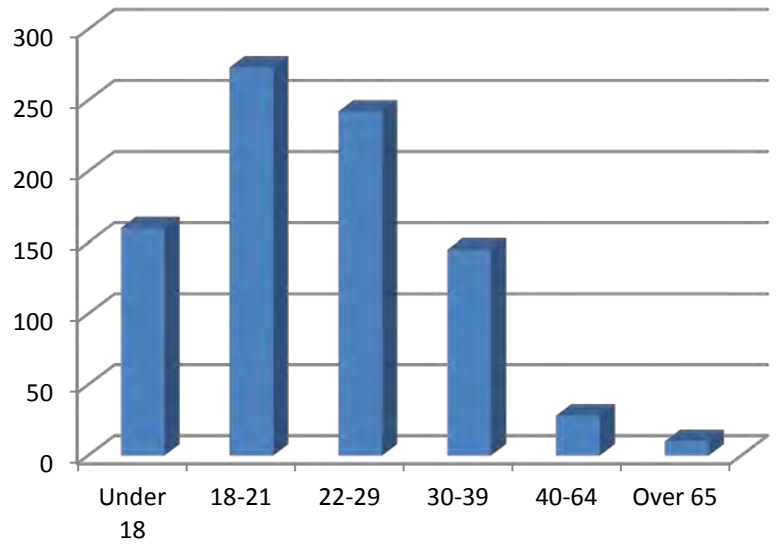
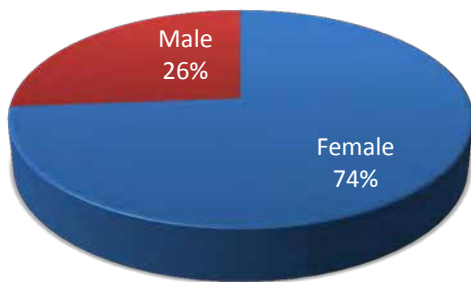


Online Student Demographics

2013-2014

Gender

| | |
|---------------|-----|
| Female | 633 |
| Male | 225 |

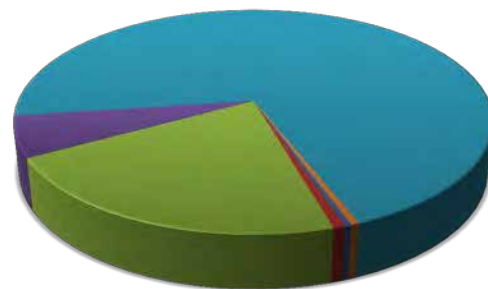


Age

| Under 18 | 18-21 | 22-29 | 30-39 | 40-64 | Over 65 |
|----------|-------|-------|-------|-------|---------|
| 160 | 273 | 242 | 145 | 28 | 10 |

Ethnicity

| | |
|---------------------------------------|-----|
| American Indian/Alaska Native: | 3 |
| Asian: | 6 |
| Black: | 184 |
| Hispanic: | 51 |
| White: | 610 |
| Not Reported: | 4 |



- American India/Alaskan Native
- Black
- White
- Asian
- Hispanic
- Not Reported



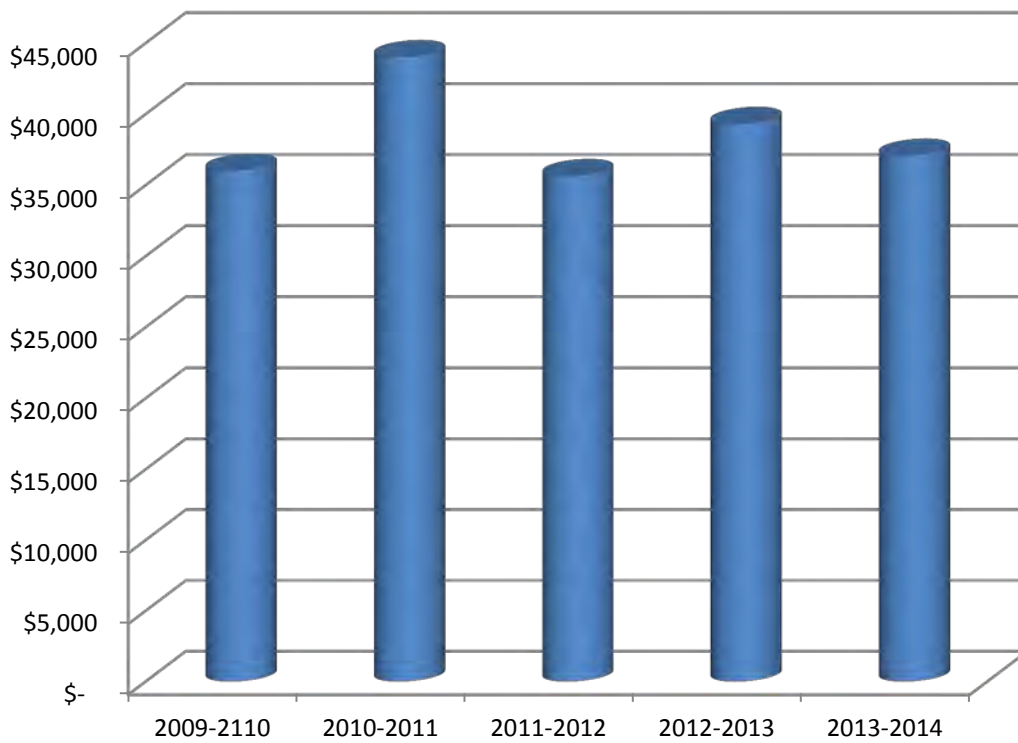
NFCC

Dual Enrollment

Number and Cost of Dual Enrolled Student

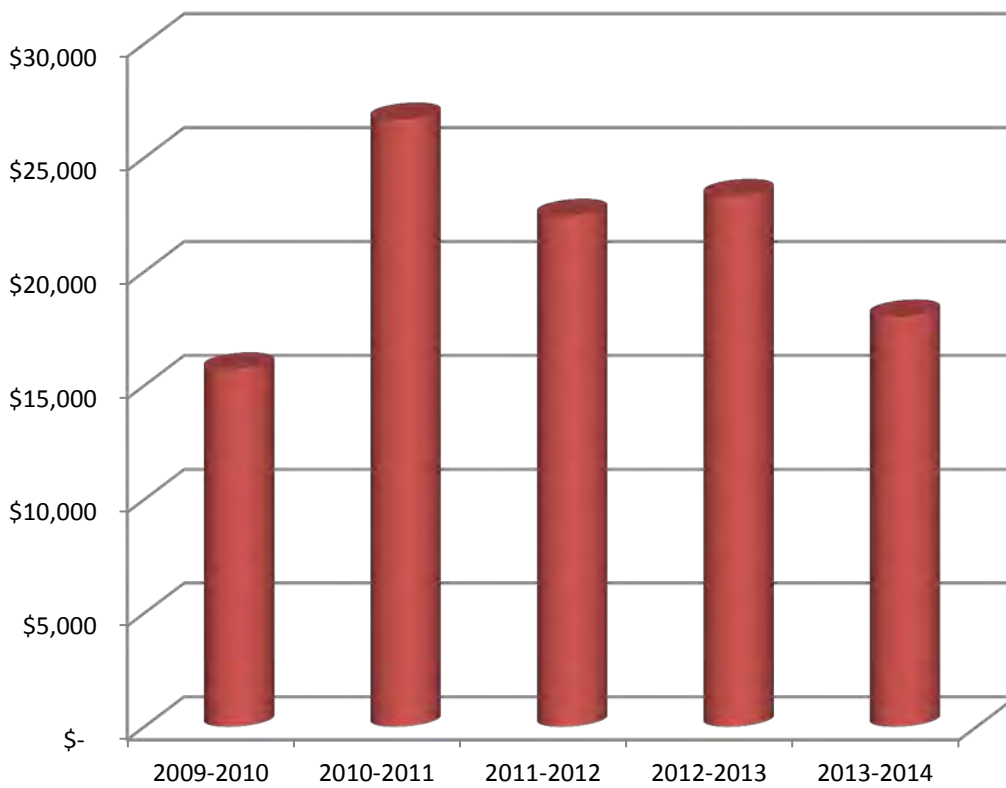
Hamilton

| | # of Students | Credit hours | County Value | Total NFCC DE Value | % Total DE Value |
|--------------------|---------------|--------------|--------------|---------------------|------------------|
| 2009-2110 | 44 | 438 | \$ 36,004 | \$ 222,105 | 16% |
| 2010-2011 | 37 | 500 | \$ 44,000 | \$ 300,754 | 15% |
| 2011-2012 | 30 | 381 | \$ 35,624 | \$ 299,668 | 12% |
| 2012-2013 | 42 | 386 | \$ 39,295 | \$ 341,946 | 11% |
| 2013-2014 | 40 | 364 | \$ 37,055 | \$ 354,060 | 10% |
| 5 Yr. Total | 193 | 2069 | \$ 191,978 | \$ 1,518,534 | |



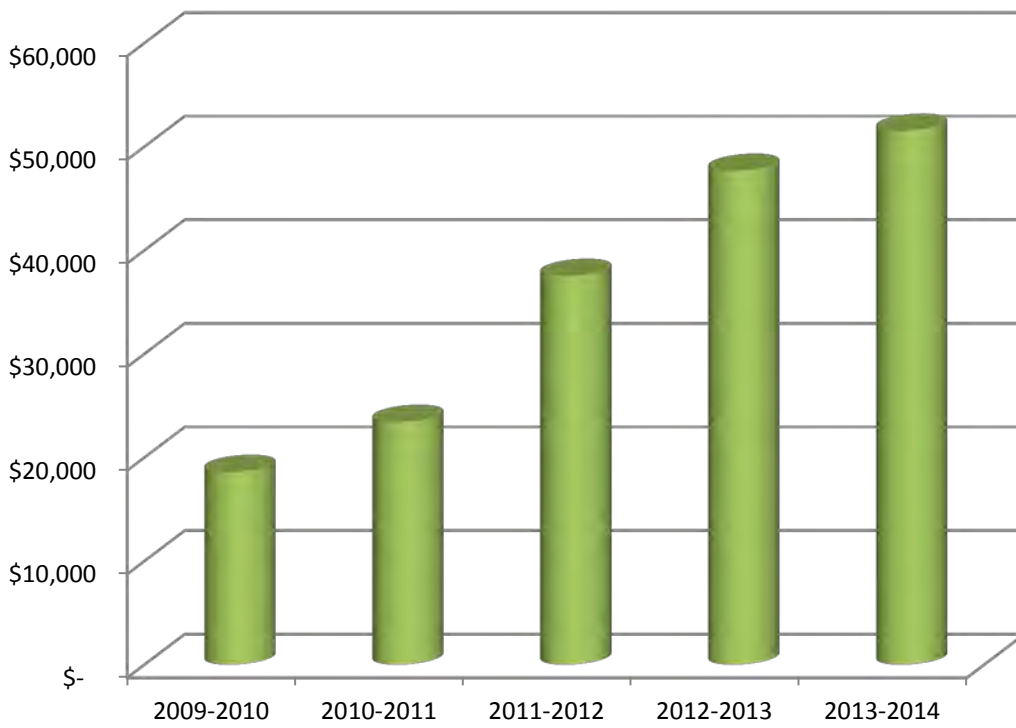
Jefferson

| | # of Students | Credit hours | County Value | Total NFCC DE Value | % Total DE Value |
|--------------------|---------------|--------------|--------------|---------------------|------------------|
| 2009-2010 | 20 | 191 | \$ 15,700 | \$ 222,105 | 7% |
| 2010-2011 | 40 | 303 | \$ 26,664 | \$ 300,754 | 9% |
| 2011-2012 | 22 | 240 | \$ 22,440 | \$ 299,668 | 7% |
| 2012-2013 | 21 | 229 | \$ 23,312 | \$ 341,946 | 7% |
| 2013-2014 | 21 | 177 | \$ 18,019 | \$ 354,060 | 5% |
| 5 Yr. Total | 124 | 1140 | \$ 106,135 | \$ 1,518,534 | |



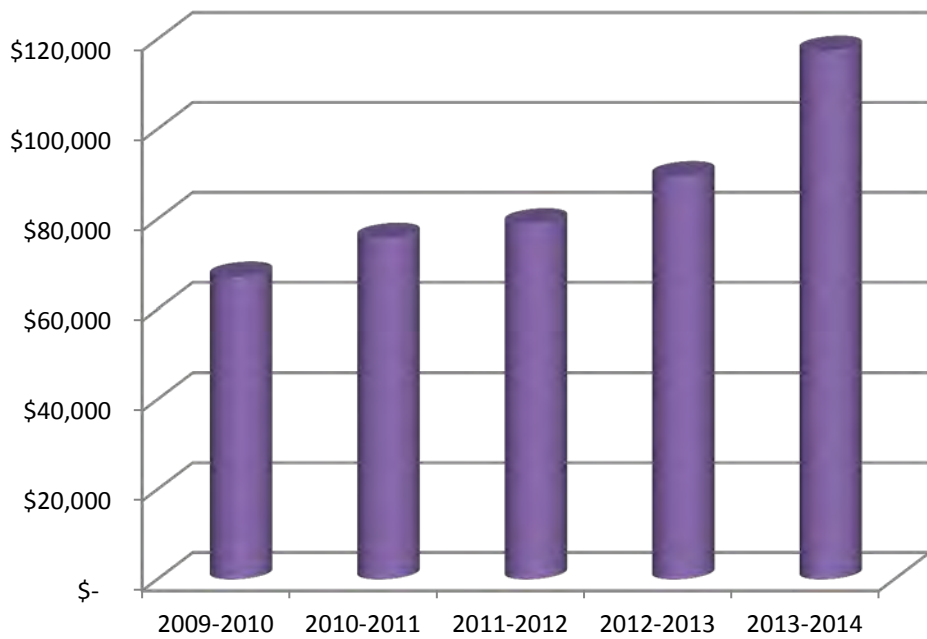
Lafayette

| | # of Students | Credit hours | County Value | Total NFCC DE Value | % Total DE Value |
|--------------------|---------------|--------------|--------------|---------------------|------------------|
| 2009-2010 | 27 | 226 | \$ 18,577 | \$ 222,105 | 8% |
| 2010-2011 | 33 | 266 | \$ 23,408 | \$ 300,754 | 8% |
| 2011-2012 | 40 | 401 | \$ 37,494 | \$ 299,668 | 13% |
| 2012-2013 | 46 | 468 | \$ 47,642 | \$ 341,946 | 14% |
| 2013-2014 | 43 | 506 | \$ 51,511 | \$ 354,060 | 15% |
| 5 Yr. Total | 189 | 1867 | \$ 178,632 | \$ 1,518,533 | |



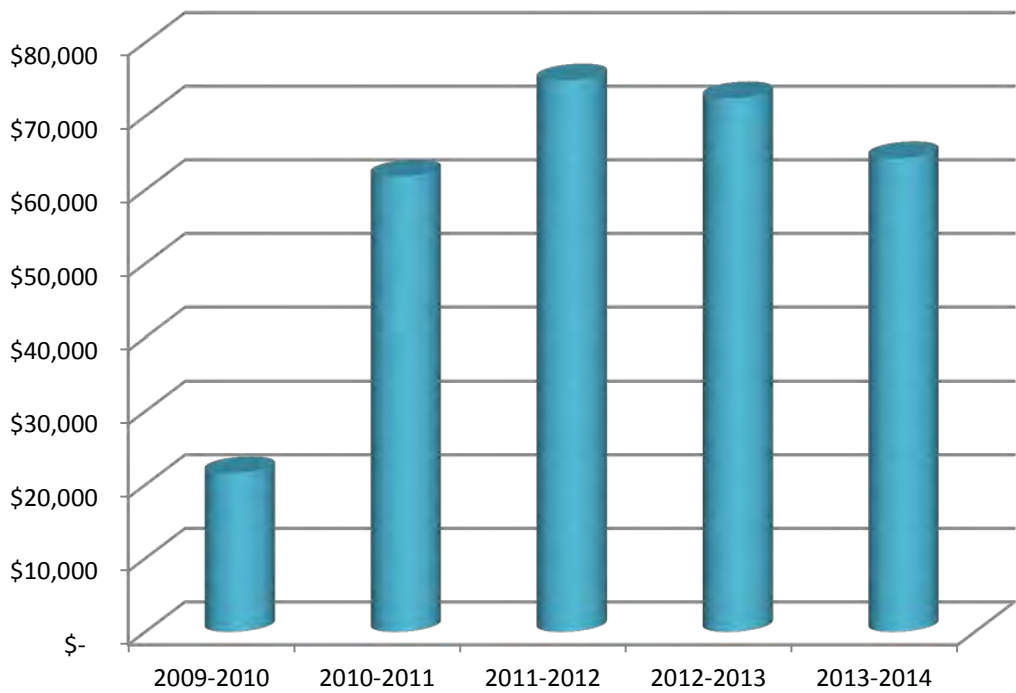
Madison

| | # of Students | Credit hours | County Value | Total NFCC DE Value | % Total DE Value |
|--------------------|---------------|--------------|--------------|---------------------|------------------|
| 2009-2010 | 73 | 817 | \$ 67,157 | \$ 222,105 | 30% |
| 2010-2011 | 65 | 861 | \$ 75,768 | \$ 300,754 | 25% |
| 2011-2012 | 67 | 845 | \$ 79,008 | \$ 299,668 | 26% |
| 2012-2013 | 79 | 879 | \$ 89,482 | \$ 341,946 | 26% |
| 2013-2014 | 88 | 1153 | \$ 117,375 | \$ 354,060 | 33% |
| 5 Yr. Total | 372 | 4555 | \$ 428,790 | \$ 1,518,533 | |



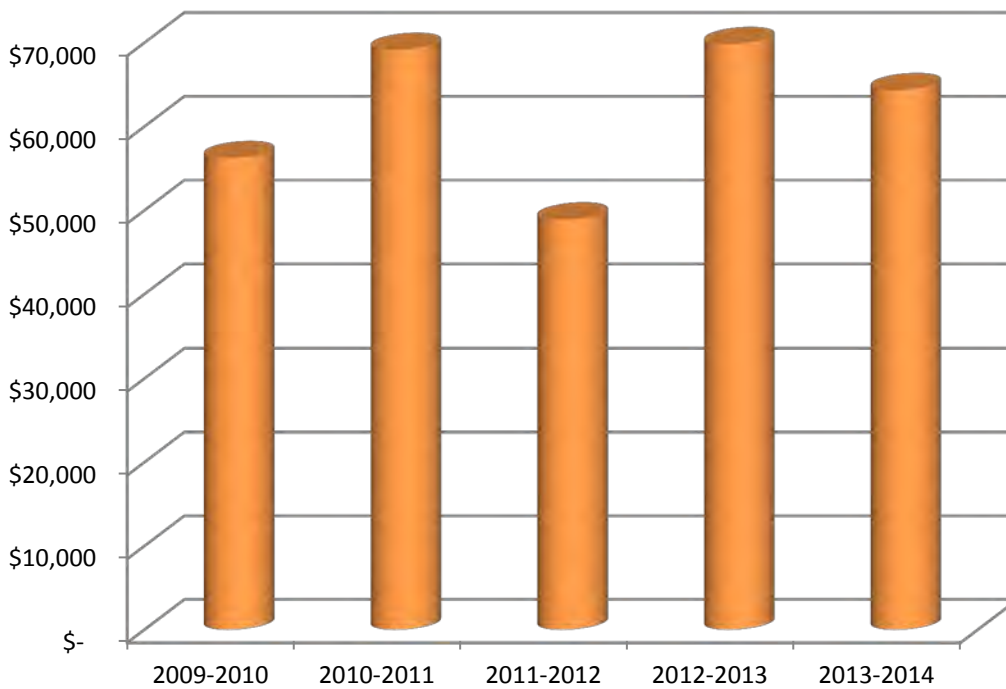
Suwannee

| | # of Students | Credit hours | County Value | Total NFCC DE Value | % Total DE Value |
|--------------------|---------------|--------------|--------------|---------------------|------------------|
| 2009-2010 | 32 | 262 | \$ 21,536 | \$ 222,105 | 10% |
| 2010-2011 | 64 | 702 | \$ 61,776 | \$ 300,754 | 21% |
| 2011-2012 | 78 | 800 | \$ 74,800 | \$ 299,668 | 25% |
| 2012-2013 | 68 | 711 | \$ 72,380 | \$ 341,946 | 21% |
| 2013-2014 | 82 | 631 | \$ 64,236 | \$ 354,060 | 18% |
| 5 Yr. Total | 324 | 3106 | \$ 294,728 | \$ 1,518,534 | |



Taylor

| | # of Students | Credit hours | County Value | Total NFCC DE Value | % Total DE Value |
|--------------------|---------------|--------------|--------------|---------------------|------------------|
| 2009-2010 | 69 | 684 | \$ 56,225 | \$ 222,105 | 25% |
| 2010-2011 | 67 | 786 | \$ 69,138 | \$ 300,754 | 23% |
| 2011-2012 | 46 | 523 | \$ 48,901 | \$ 299,668 | 16% |
| 2012-2013 | 53 | 686 | \$ 69,835 | \$ 341,946 | 20% |
| 2013-2014 | 41 | 632 | \$ 64,338 | \$ 354,060 | 18% |
| 5 Yr. Total | 276 | 3311 | \$ 308,436 | \$ 1,518,534 | |



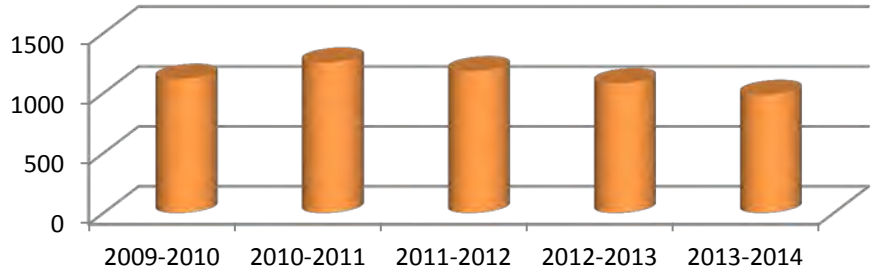


NFCC

Financial Aid

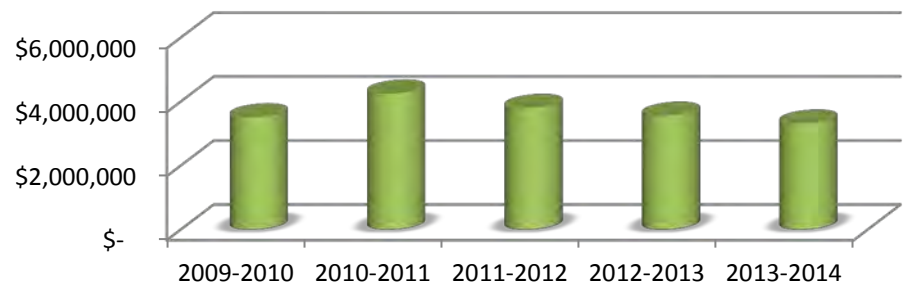
Number of Financial Aid Awards

| Number of Awards | |
|------------------|------|
| 2009-2010 | 1117 |
| 2010-2011 | 1253 |
| 2011-2012 | 1181 |
| 2012-2013 | 1081 |
| 2013-2014 | 983 |



Dollar Amount of Financial Aid Awards

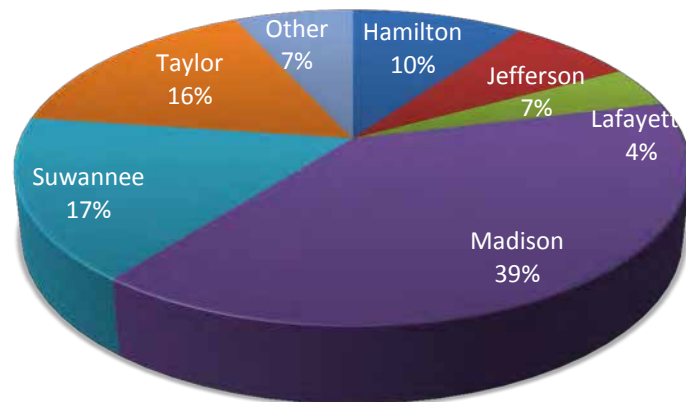
| Dollar Amount of Awards | |
|-------------------------|--------------|
| 2009-2010 | \$ 3,501,192 |
| 2010-2011 | \$ 4,243,146 |
| 2011-2012 | \$ 3,794,543 |
| 2012-2013 | \$ 3,549,951 |
| 2013-2014 | \$ 3,308,165 |



Distribution by County

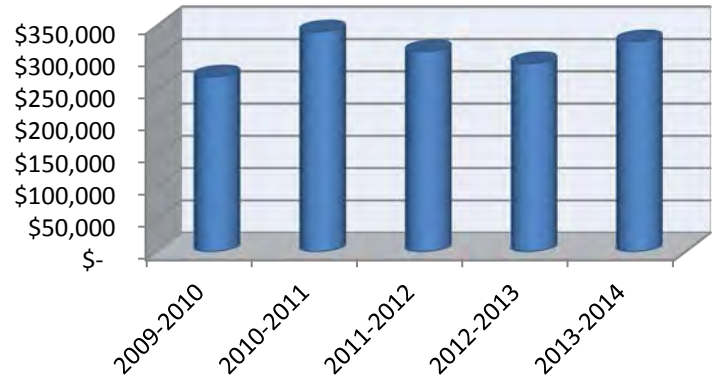
2013-2014

| By County | |
|--------------|---------------------|
| Hamilton | \$ 326,055 |
| Jefferson | \$ 237,528 |
| Lafayette | \$ 136,596 |
| Madison | \$ 1,302,902 |
| Suwannee | \$ 550,029 |
| Taylor | \$ 531,234 |
| Other | \$ 223,820 |
| Total | \$ 3,308,165 |

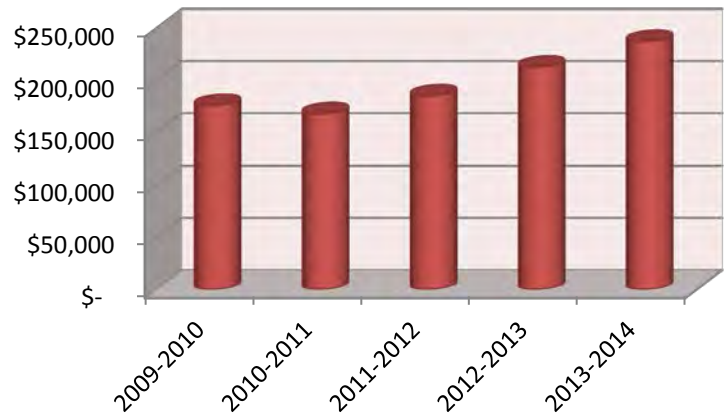


Awards by County

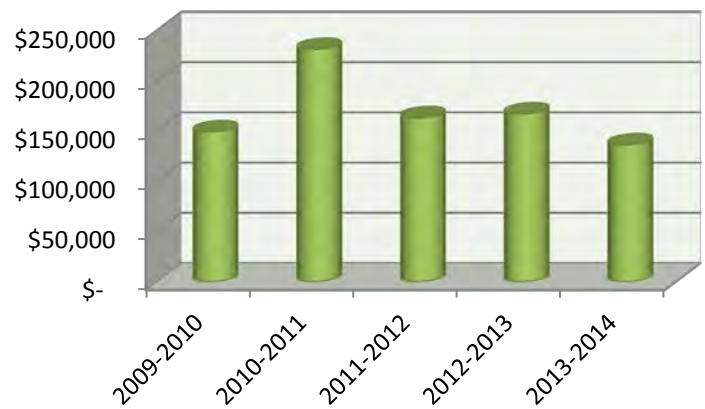
| Hamilton | | |
|-----------|---------------|-------------|
| | # of Students | Awards Paid |
| 2009-2010 | 91 | \$ 271,452 |
| 2010-2011 | 100 | \$ 341,311 |
| 2011-2012 | 92 | \$ 310,662 |
| 2012-2013 | 92 | \$ 292,243 |
| 2013-2014 | 90 | \$ 326,055 |



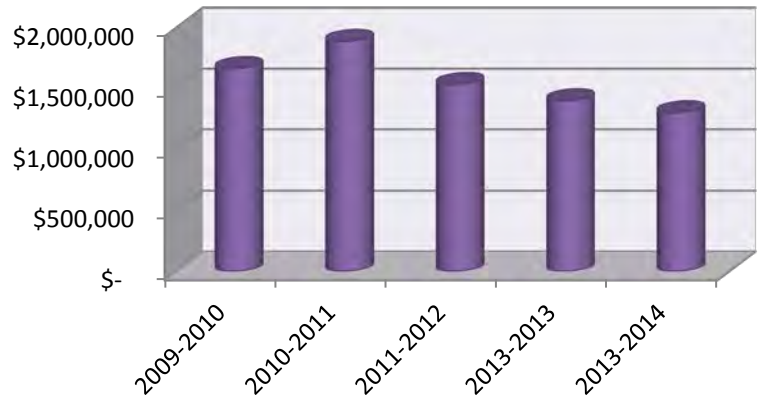
| Jefferson | | |
|-----------|---------------|-------------|
| | # of Students | Awards Paid |
| 2009-2010 | 60 | \$ 175,920 |
| 2010-2011 | 58 | \$ 168,150 |
| 2011-2012 | 66 | \$ 185,296 |
| 2012-2013 | 70 | \$ 212,836 |
| 2013-2014 | 71 | \$ 237,528 |



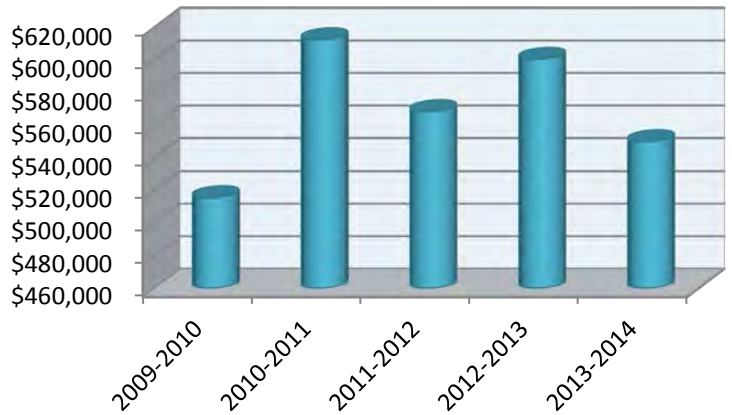
| Lafayette | | |
|-----------|---------------|-------------|
| | # of Students | Awards Paid |
| 2009-2010 | 46 | \$ 149,573 |
| 2010-2011 | 68 | \$ 231,694 |
| 2011-2012 | 51 | \$ 163,660 |
| 2012-2013 | 46 | \$ 167,442 |
| 2013-2014 | 40 | \$ 136,596 |



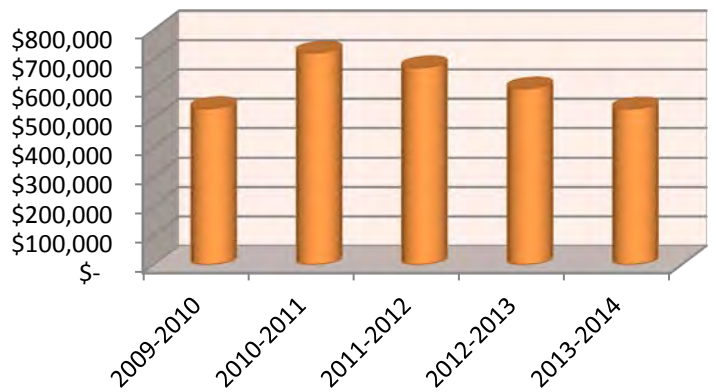
| Madison | | |
|------------------|----------------------|--------------------|
| | # of Students | Awards Paid |
| 2009-2010 | 516 | \$ 1,666,185 |
| 2010-2011 | 539 | \$ 1,889,842 |
| 2011-2012 | 501 | \$ 1,534,922 |
| 2013-2013 | 427 | \$ 1,401,654 |
| 2013-2014 | 392 | \$ 1,302,902 |

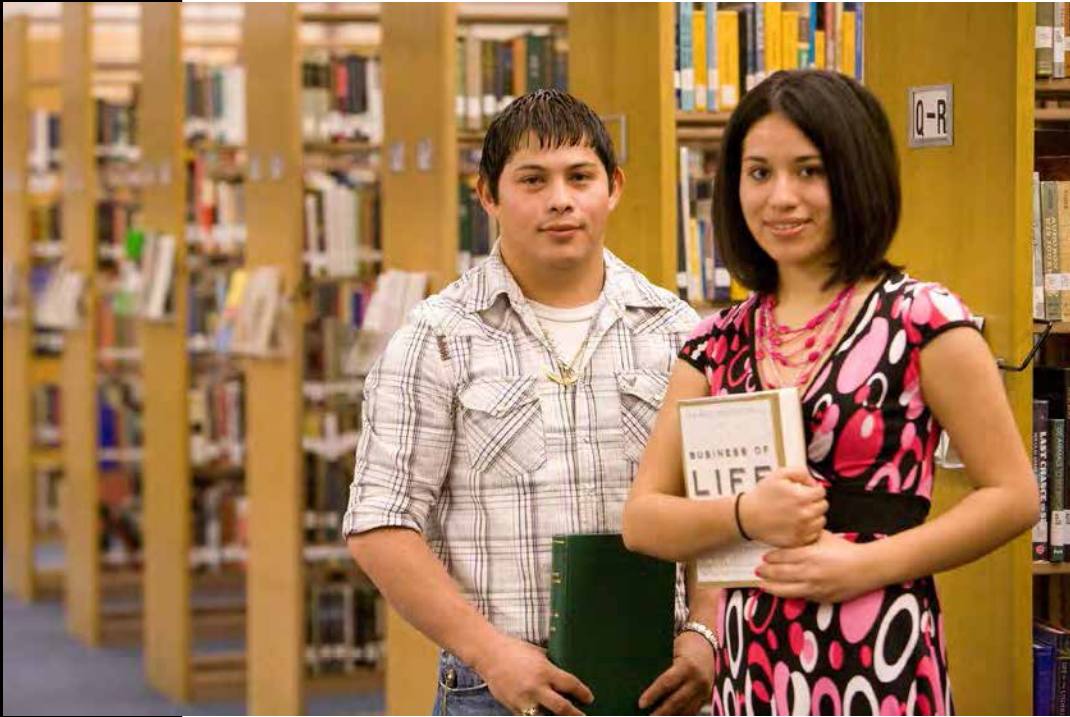


| Suwannee | | |
|------------------|----------------------|--------------------|
| | # of Students | Awards Paid |
| 2009-2010 | 164 | \$ 515,958 |
| 2010-2011 | 177 | \$ 612,692 |
| 2011-2012 | 164 | \$ 568,508 |
| 2012-2013 | 174 | \$ 600,683 |
| 2013-2014 | 159 | \$ 550,029 |



| Taylor | | |
|------------------|----------------------|--------------------|
| | # of Students | Awards Paid |
| 2009-2010 | 169 | \$ 532,456 |
| 2010-2011 | 216 | \$ 722,461 |
| 2011-2012 | 208 | \$ 672,185 |
| 2012-2013 | 191 | \$ 600,042 |
| 2013-2014 | 171 | \$ 531,234 |





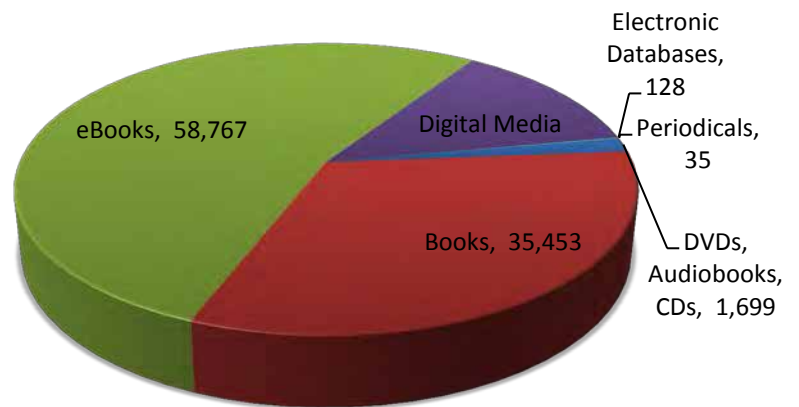
NFCC

The Library

Collections

2013-2014

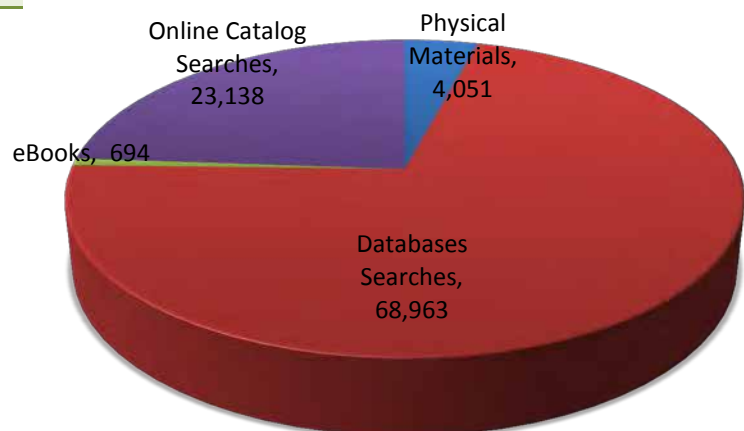
| Collection | 2013-2014 |
|-----------------------|-----------|
| DVDs, Audiobooks, CDs | 1,699 |
| Books | 35,453 |
| eBooks | 58,767 |
| Digital Media | 14,052 |
| Electronic Databases | 128 |
| Periodicals | 35 |



Circulation Statistics

2013-2014

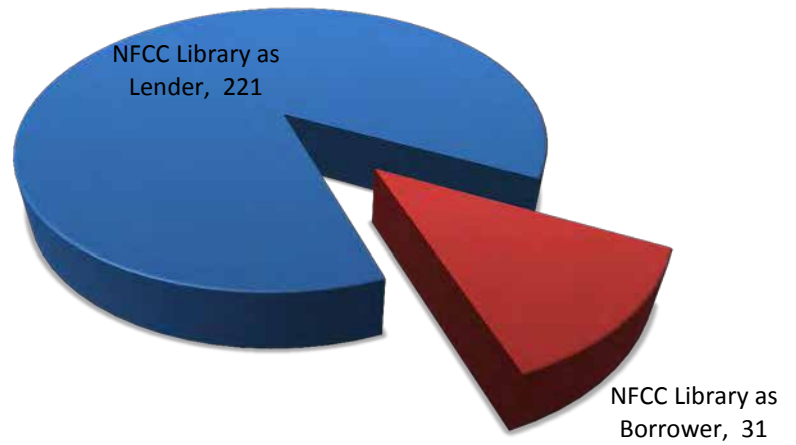
| Circulation Statistics | 2013-2014 |
|-------------------------|-----------|
| Physical Materials | 4,051 |
| Databases Searches | 68,963 |
| eBooks | 694 |
| Online Catalog Searches | 23,138 |
| Gate Count | 36,787 |



Interlibrary Loan Statistics

2013-2014

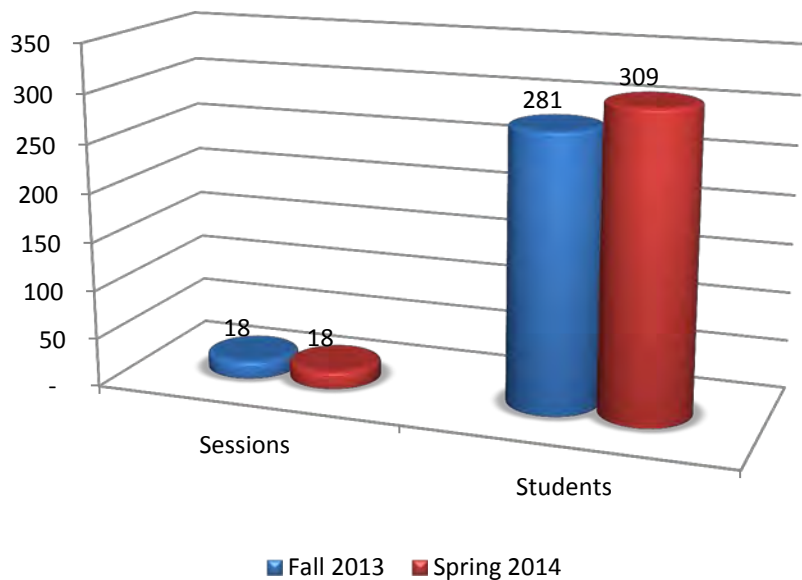
| Interlibrary Loan | 2013-2014 |
|--------------------------|-----------|
| NFCC Library as Lender | 221 |
| NFCC Library as Borrower | 31 |



Orientation Sessions

2013-2014

| Orientation Sessions Provided | Fall 2013 | Spring 2014 |
|-------------------------------|-----------|-------------|
| Sessions | 18 | 18 |
| Students | 281 | 309 |



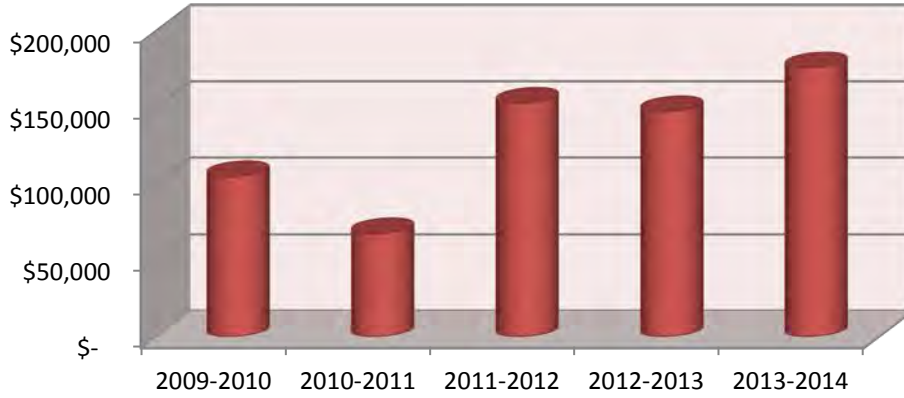


NFCC

The Foundation

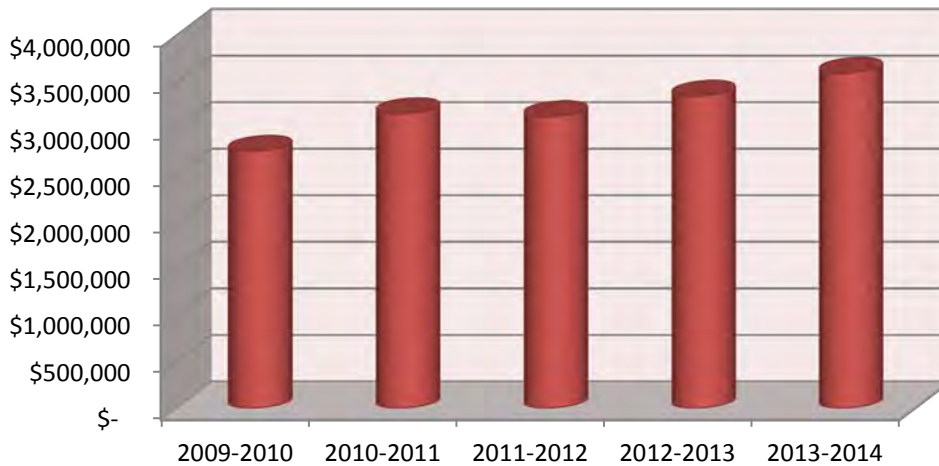
Scholarships Awarded

| 2009-2010 | 2010-2011 | 2011-2012 | 2012-2013 | 2013-2014 |
|------------|-----------|------------|------------|------------|
| \$ 104,843 | \$ 67,830 | \$ 153,013 | \$ 147,419 | \$ 176,150 |



Foundation Assets`

| 2009-2010 | 2010-2011 | 2011-2012 | 2012-2013 | 2013-2014 |
|--------------|--------------|--------------|--------------|--------------|
| \$ 2,760,800 | \$ 3,164,631 | \$ 3,132,899 | \$ 3,353,846 | \$ 3,600,000 |





NFCC

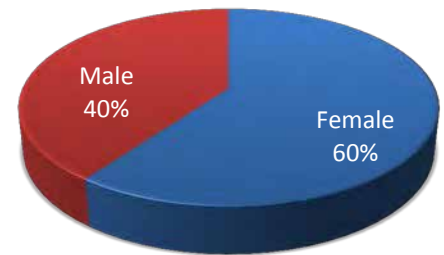
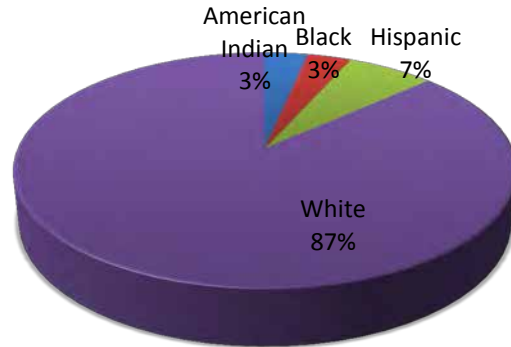
Faculty and Staff

Full-Time Faculty

2013-2014

By Gender & Ethnicity

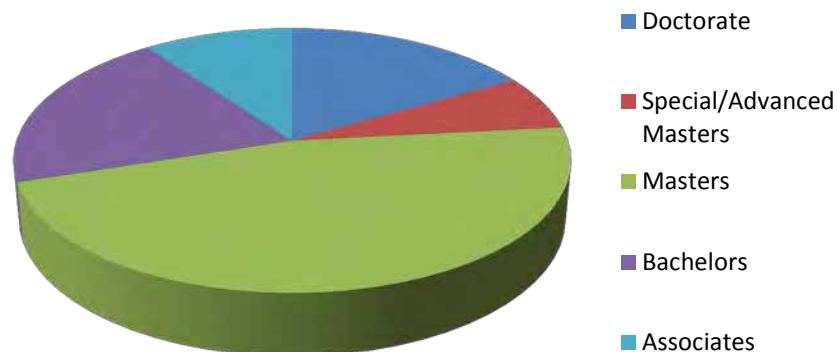
| | Female | Male |
|-----------------|--------|------|
| American Indian | 0 | 1 |
| Asian | 0 | 0 |
| Black | 0 | 1 |
| Hispanic | 0 | 2 |
| White | 18 | 8 |



Source: Florida College System, 2014 IPEDS Human Resource Survey, Part A

By Degree

| | |
|--------------------------|----|
| Doctorate | 5 |
| Special/Advanced Masters | 2 |
| Masters | 14 |
| Bachelors | 6 |
| Associates | 3 |
| Less than Associates | 0 |



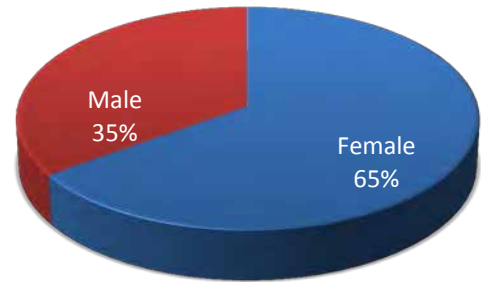
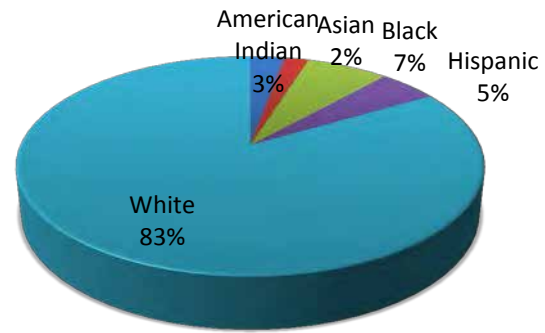
Source: Florida College System, The Fact Book, Table 18

Full-Time Staff

2013-2014

By Gender & Ethnicity

| | Female | Male |
|-----------------|--------|------|
| American Indian | 1 | 2 |
| Asian | 1 | 1 |
| Black | 3 | 4 |
| Hispanic | 2 | 3 |
| White | 60 | 26 |

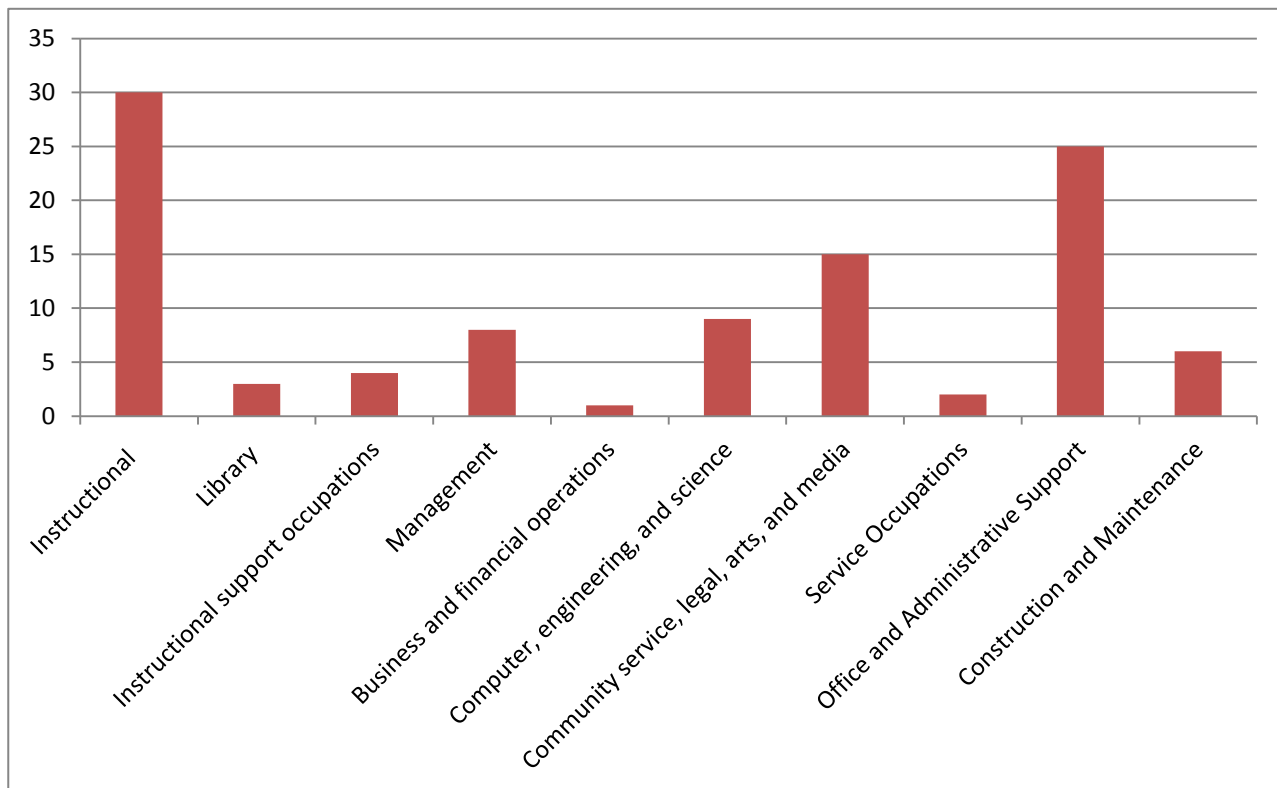


Source: Florida College System, 2014 IPEDS Human Resource Survey, Part B

Full-Time Faculty and Staff

By Occupation

| | |
|---|----|
| Instructional | 30 |
| Library | 3 |
| Instructional support occupations | 4 |
| Management | 8 |
| Business and financial operations | 1 |
| Computer, engineering, and science | 9 |
| Community service, legal, arts, and media | 15 |
| Service Occupations | 2 |
| Office and Administrative Support | 25 |
| Construction and Maintenance | 6 |





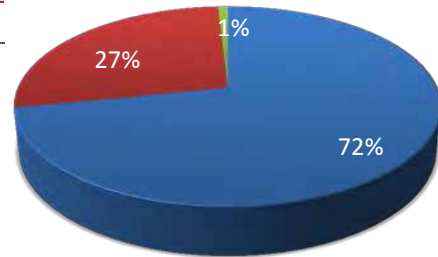
NFCC

Finances

General Fund Budget

By Object

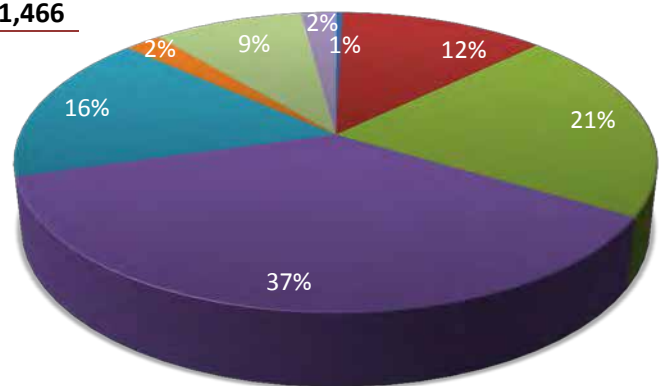
| | 2013-2014 | 2014-2015 |
|------------------|--------------------|--------------------|
| Personnel Costs | \$6,704,704 | \$7,024,650 |
| Capital Outlay | \$115,356 | \$2,671,500 |
| Current Expenses | \$2,637,403 | \$85,316 |
| Total | \$9,457,463 | \$9,781,466 |



■ Personnel Costs ■ Capital Outlay ■ Current Expenses

By Organizational Unit

| | 2013-2014 | 2014-2015 |
|----------------------------------|--------------------|--------------------|
| Academic Support - SPD | \$0 | \$44,313 |
| Academic Support - Other | \$1,063,169 | \$1,202,697 |
| Institutional Support | \$2,025,894 | \$2,042,152 |
| Instruction | \$3,576,017 | \$3,614,795 |
| Plant Operations and Maintenance | \$1,592,401 | \$1,581,052 |
| Public Service | \$214,766 | \$214,325 |
| Research | \$0 | \$0 |
| Student Aid | \$0 | \$0 |
| Student Support | \$764,735 | \$877,821.00 |
| Transfer Contingencies | \$220,481 | \$204,311 |
| Total | \$9,457,463 | \$9,781,466 |

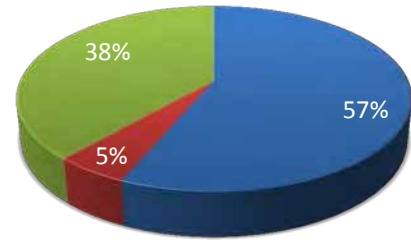


■ Academic Support - SPD ■ Academic Support - Other
 ■ Institutional Support ■ Instruction
 ■ Plant Operations and Maintenance ■ Public Service
 ■ Research ■ Student Aid
 ■ Student Support ■ Transfer Contingencies

General Fund Expenditures

By Object

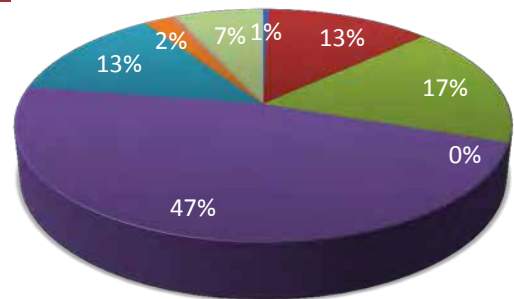
| | 2012-2013 | 2013-2014 |
|------------------|--------------------|---------------------|
| Personnel Costs | \$5,733,813 | \$6,301,080 |
| Capital Outlay | \$363,021 | \$574,118 |
| Current Expenses | \$2,337,097 | \$4,287,984 |
| Total | \$8,433,931 | \$11,163,182 |



■ Personnel Costs ■ Capital Outlay ■ Current Expenses

By Organizational Unit

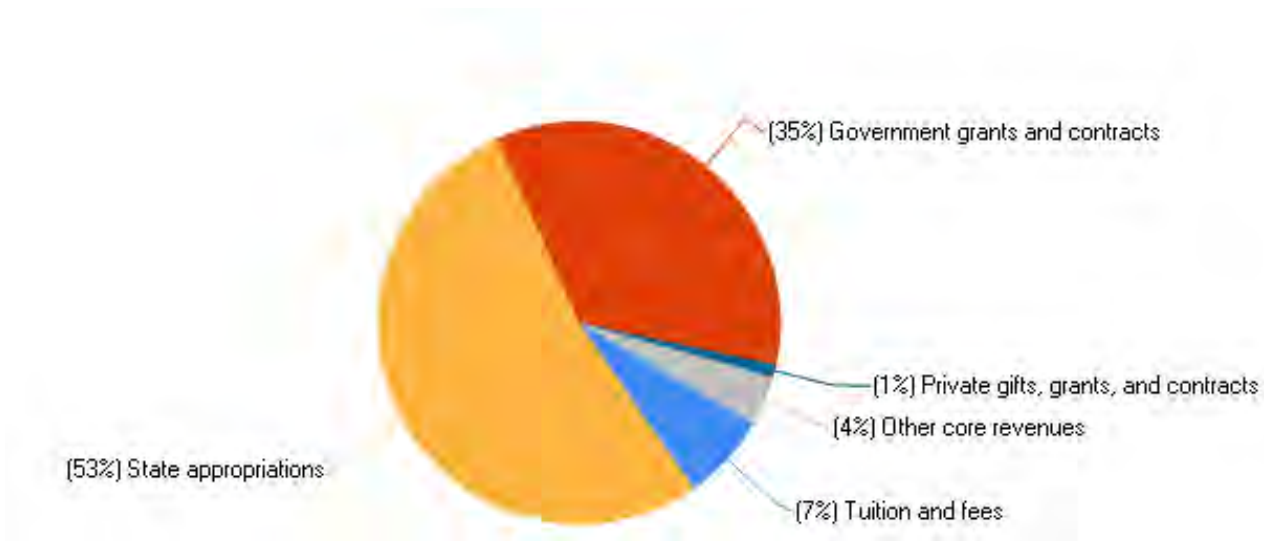
| | 2012-2013 | 2013-2014 |
|----------------------------------|--------------------|---------------------|
| Academic Support - SPD | \$42,885 | \$53,354 |
| Academic Support - Other | \$861,074 | \$1,419,933 |
| Institutional Support | \$1,597,249 | \$1,907,474 |
| Instruction | \$3,196,376 | \$5,265,285 |
| Plant Operations and Maintenance | \$1,668,964 | \$1,467,060 |
| Public Service | \$265,299 | \$231,044 |
| Research | \$0 | \$579 |
| Student Aid | \$49,110 | \$52,130 |
| Student Support | \$750,486 | \$764,309 |
| Transfer Contingencies | \$2,488 | \$2,014 |
| Total | \$8,433,931 | \$11,163,182 |



■ Academic Support - SPD ■ Academic Support - Other
 ■ Institutional Support ■ Instruction
 ■ Plant Operations and Maintenance ■ Public Service
 ■ Research ■ Student Aid
 ■ Student Support ■ Transfer Contingencies

Percent Distribution of Core Revenues

Fiscal year 2013



Core Revenues per FTE Enrollment

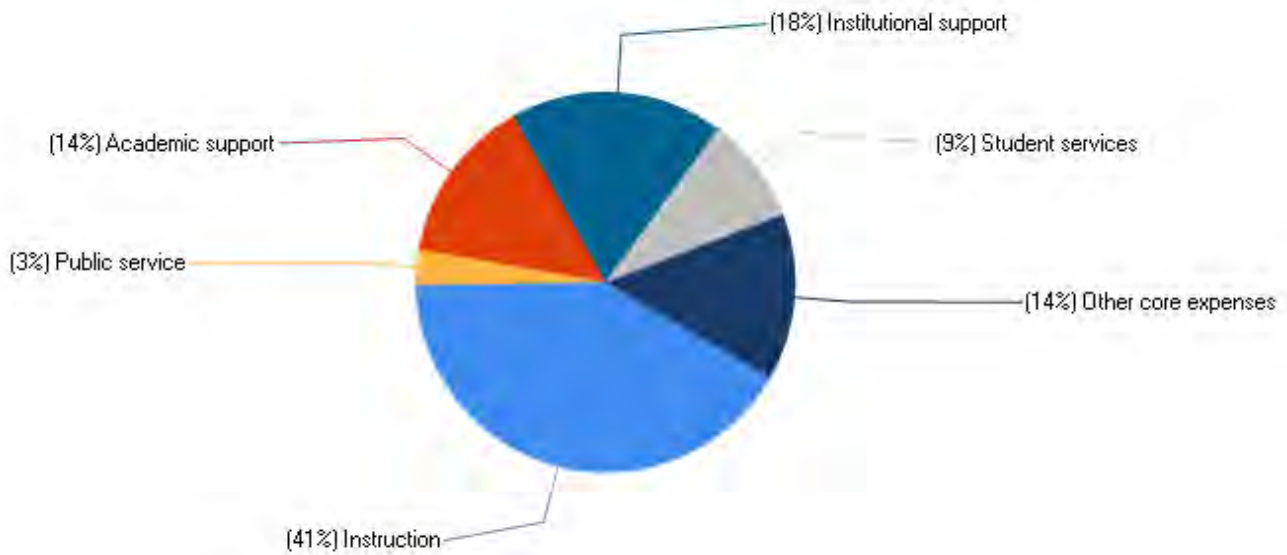
Fiscal year 2013

| | |
|-------------------------------------|---------|
| Tuition and Fees | \$83 |
| State Appropriations | \$6818 |
| Local Appropriations | \$0 |
| Government Grants and Contracts | \$44594 |
| Private Gifts, Grants and Contracts | \$166 |
| Investment Return | \$14 |
| Other Core Revenues | \$477 |

IPEDS Data Institutional Profile 2013-2014

Percent Distribution of Core Expenses

Fiscal year 2013



IPEDS Data Institutional Profile 2013-2014

Core Expenses per FTE Enrollment

Fiscal year 2013

| | |
|-----------------------|---------|
| Instruction | \$5,510 |
| Research | \$0 |
| Public Service | \$408 |
| Academic Support | \$1,858 |
| Institutional Support | \$2,348 |
| Student Services | \$1,258 |
| Other Core Expenses | \$1,910 |

IPEDS Data Institutional Profile 2013-2014



NFCC

The District

Hamilton County

| Quick Facts | Hamilton County | Florida |
|---|-----------------|------------|
| Population, 2013 | 14,354 | 19,600,311 |
| Persons under 18 years, 2013 | 19.0% | 20.6% |
| White, 2013 | 62.6% | 78.1% |
| Black or African American, 2013 | 33.9% | 16.7% |
| American Indian and Alaska Native, 2013 | 0.9% | 0.5% |
| Asian, 2013 | 0.8% | 2.7% |
| Native Hawaiian and Other Pacific Islander, 2013 | | 0.1% |
| Two More Races, 2013 | 1.8% | 1.9% |
| Hispanic or Latino, 2013 | 9.3% | 23.6% |
| White, not Hispanic or Latino, 2013 | 54.8% | 56.4% |
| High school graduate or higher, % of persons 25+, 2009-2013 | 75.1% | 86.1% |
| Bachelor's degree or higher, % of persons 25+, 2009-2013 | 9.4% | 26.4% |
| Per capita money income in past 12 months, 2009-2013 | \$16,295 | \$26,236 |
| Median household income, 2009-2013 | \$37,716 | \$46,956 |
| Persons below poverty level, 2009-2013 | 23.6% | 16.3% |
| Land area in square miles, 2010 | 513.79 | 53624.76 |
| Persons per square mile, 2010 | 28.8 | 350.6 |

Source: U.S. Census Bureau: State and County QuickFacts: 02/11/2015



Jefferson County

| Quick Facts | Jefferson County | Florida |
|---|------------------|------------|
| Population, 2013 | 14,194 | 19,600,311 |
| Persons under 18 years, 2013 | 17.5% | 20.6% |
| White, 2013 | 62.0% | 78.1% |
| Black or African American, 2013 | 35.6% | 16.7% |
| American Indian and Alaska Native, 2013 | 0.4% | 0.5% |
| Asian, 2013 | 0.4% | 2.7% |
| Native Hawaiian and Other Pacific Islander, 2013 | | 0.1% |
| Two More Races, 2013 | 1.5% | 1.9% |
| Hispanic or Latino, 2013 | 4.1% | 23.6% |
| White, not Hispanic or Latino, 2013 | 58.7% | 56.4% |
| High school graduate or higher, % of persons 25+, 2009-2013 | 81.2% | 86.1% |
| Bachelor's degree or higher, % of persons 25+, 2009-2013 | 16.9% | 26.4% |
| Per capita money income in past 12 months, 2009-2013 | \$21,184 | \$26,236 |
| Median household income, 2009-2013 | \$44,170 | \$46,956 |
| Persons below poverty level, 2009-2013 | 17.2% | 16.3% |
| Land area in square miles, 2010 | 598.1 | 53624.76 |
| Persons per square mile, 2010 | 24.7 | 350.6 |

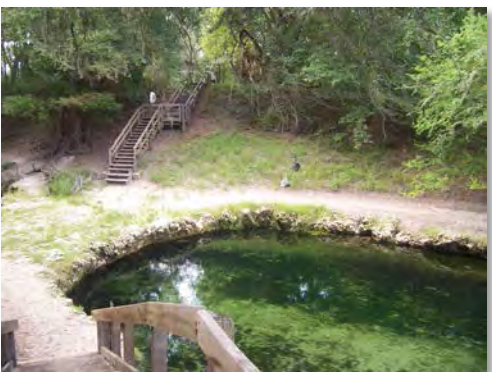
Source: U.S. Census Bureau: State and County QuickFacts: 02/11/2015



Lafayette County

| Quick Facts | Lafayette County | Florida |
|---|------------------|------------|
| Population, 2013 | 8,848 | 19,600,311 |
| Persons under 18 years, 2013 | 20.7% | 20.6% |
| White, 2013 | 82.5% | 78.1% |
| Black or African American, 2013 | 15.2% | 16.7% |
| American Indian and Alaska Native, 2013 | 0.7% | 0.5% |
| Asian, 2013 | 0.3% | 2.7% |
| Native Hawaiian and Other Pacific Islander, 2013 | 0.1% | 0.1% |
| Two More Races, 2013 | 1.3% | 1.9% |
| Hispanic or Latino, 2013 | 12.6% | 23.6% |
| White, not Hispanic or Latino, 2013 | 70.8% | 56.4% |
| High school graduate or higher, % of persons 25+, 2009-2013 | 78.4% | 86.1% |
| Bachelor's degree or higher, % of persons 25+, 2009-2013 | 9.3% | 26.4% |
| Per capita money income in past 12 months, 2009-2013 | \$18,660 | \$26,236 |
| Median household income, 2009-2013 | \$39,722 | \$46,956 |
| Persons below poverty level, 2009-2013 | 20.2% | 16.3% |
| Land area in square miles, 2010 | 543.41 | 53624.76 |
| Persons per square mile, 2010 | 16.3 | 350.6 |

Source: U.S. Census Bureau: State and County QuickFacts: 02/11/2015



Madison County

| Quick Facts | Madison County | Florida |
|---|----------------|------------|
| Population, 2013 | 18,728 | 19,600,311 |
| Persons under 18 years, 2013 | 20.3% | 20.6% |
| White, 2013 | 58.7% | 78.1% |
| Black or African American, 2013 | 39.0% | 16.7% |
| American Indian and Alaska Native, 2013 | 0.7% | 0.5% |
| Asian, 2013 | 0.3% | 2.7% |
| Native Hawaiian and Other Pacific Islander, 2013 | | 0.1% |
| Two More Races, 2013 | 1.3% | 1.9% |
| Hispanic or Latino, 2013 | 5.0% | 23.6% |
| White, not Hispanic or Latino, 2013 | 54.5% | 56.4% |
| High school graduate or higher, % of persons 25+, 2009-2013 | 78.2% | 86.1% |
| Bachelor's degree or higher, % of persons 25+, 2009-2013 | 9.7% | 26.4% |
| Per capita money income in past 12 months, 2009-2013 | \$15,538 | \$26,236 |
| Median household income, 2009-2013 | \$33,833 | \$46,956 |
| Persons below poverty level, 2009-2013 | 22.5% | 16.3% |
| Land area in square miles, 2010 | 695.95 | 53624.76 |
| Persons per square mile, 2010 | 27.6 | 350.6 |

Source: U.S. Census Bureau: State and County QuickFacts: 02/11/2015



Suwannee County

| Quick Facts | Suwannee County | Florida |
|---|-----------------|------------|
| Population, 2013 | 43,734 | 19,600,311 |
| Persons under 18 years, 2013 | 21.4% | 20.6% |
| White, 2013 | 83.7% | 78.1% |
| Black or African American, 2013 | 13.4% | 16.7% |
| American Indian and Alaska Native, 2013 | 0.7% | 0.5% |
| Asian, 2013 | 0.7% | 2.7% |
| Native Hawaiian and Other Pacific Islander, 2013 | 0.1% | 0.1% |
| Two More Races, 2013 | 1.4% | 1.9% |
| Hispanic or Latino, 2013 | 9.1% | 23.6% |
| White, not Hispanic or Latino, 2013 | 75.5% | 56.4% |
| High school graduate or higher, % of persons 25+, 2009-2013 | 79.8% | 86.1% |
| Bachelor's degree or higher, % of persons 25+, 2009-2013 | 9.8% | 26.4% |
| Per capita money income in past 12 months, 2009-2013 | \$18,431 | \$26,236 |
| Median household income, 2009-2013 | \$35,698 | \$46,956 |
| Persons below poverty level, 2009-2013 | 23.6% | 16.3% |
| Land area in square miles, 2010 | 688.55 | 53624.76 |
| Persons per square mile, 2010 | 60.3 | 350.6 |

Source: U.S. Census Bureau: State and County QuickFacts: 02/11/2015



Taylor County

| Quick Facts | Taylor County | Florida |
|---|---------------|------------|
| Population, 2013 | 22,857 | 19,600,311 |
| Persons under 18 years, 2013 | 19.0% | 20.6% |
| White, 2013 | 75.8% | 78.1% |
| Black or African American, 2013 | 20.9% | 16.7% |
| American Indian and Alaska Native, 2013 | 0.9% | 0.5% |
| Asian, 2013 | 0.8% | 2.7% |
| Native Hawaiian and Other Pacific Islander, 2013 | | 0.1% |
| Two More Races, 2013 | 1.7% | 1.9% |
| Hispanic or Latino, 2013 | 3.9% | 23.6% |
| White, not Hispanic or Latino, 2013 | 72.3% | 56.4% |
| High school graduate or higher, % of persons 25+, 2009-2013 | 76.5% | 86.1% |
| Bachelor's degree or higher, % of persons 25+, 2009-2013 | 11.6% | 26.4% |
| Per capita money income in past 12 months, 2009-2013 | \$17,045 | \$26,236 |
| Median household income, 2009-2013 | \$36,356 | \$46,956 |
| Persons below poverty level, 2009-2013 | 16.7% | 16.3% |
| Land area in square miles, 2010 | 1043.31 | 53624.76 |
| Persons per square mile, 2010 | 21.6 | 350.6 |

Source: U.S. Census Bureau: State and County QuickFacts: 02/11/2015





NFCC

Economic Impact

Business Perspective

NFCC Raises Consumer Spending

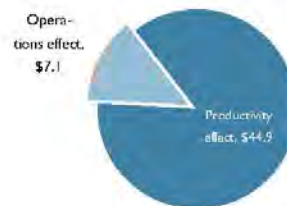


- NFCC employed 104 full-time and 55 part-time faculty and staff in the 2011-12 reporting year, with an annual payroll of \$6.5 million.
- In addition to payroll, NFCC spent \$5.8 million in FY 2011-12 for supplies and services, of which an estimated 41% was spent in the NFCC Service Area.

NFCC Generates New Income

- NFCC payroll and spending for supplies and services generate a net impact of \$7.1 million in added income in the economy each year.
- The increased productivity of workers due to the accumulation of past and present NFCC skills in the NFCC Service Area workforce contributes approximately \$44.9 million in added income each year.

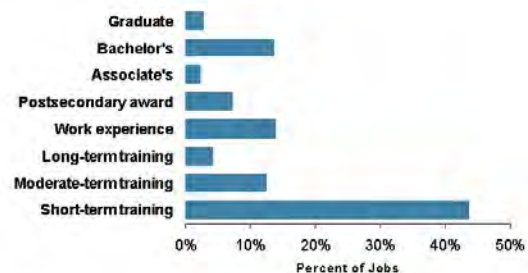
Added Income in NFCC Service Area Due to NFCC (\$ Millions)



NFCC Creates a Skilled Workforce

- NFCC activities encourage new business, assist existing business, and create long-term economic growth. The college enhances worker skills and provides customized training to local business and industry.
- An estimated 514,200 NFCC credits have accumulated in the NFCC Service Area workforce over the past 29-year period as former NFCC students (completers and non-completers) enter the regional workforce each year.

Projected 2022 Jobs by Skill Level in NFCC Service Area (%)



EMSI is a leading provider of socioeconomic impact and strategic planning tools to community and technical colleges in the US and Canada. Visit us at www.economicmodeling.com for more information. To see full documentation of the study, please contact the college.

MARCH 2013
WWW.ECONOMICMODELING.COM
866.999.3674



NFCC Increases State Income



- The activities of NFCC's 2011-12 student body will generate about \$3.8 million in labor income in the state economy each year.
- Once NFCC's current students become active in the workforce, they will promote business output, raise consumer spending, and increase property income in the state. All of this contributes an additional \$1.8 million in taxable income each year.
- Altogether, higher student income and associated effects on business productivity add \$5.6 million in income annually to the state economy.

NFCC Reduces Social Costs

- Education is statistically correlated with improved lifestyle behaviors, including reduced incidences of absenteeism, alcohol abuse, and smoking, lower probability of committing crime, and fewer welfare and unemployment claims.

Annual Benefits to the Florida Public Due to NFCC (\$ Millions)



- It is estimated that NFCC's 2011-12 student population will generate social savings to the Florida public equal to \$329,000 a year.
- These savings accrue to all state and local residents—students, homeowners, businesses, and taxpayers.



EMSI is a leading provider of socioeconomic impact and strategic planning tools to community and technical colleges in the US and Canada. Visit us at www.economicmodeling.com for more information. To see full documentation of the study, please contact the college.

MARCH 2013
WWW.ECONOMICMODELING.COM
866.999.3674

emsi

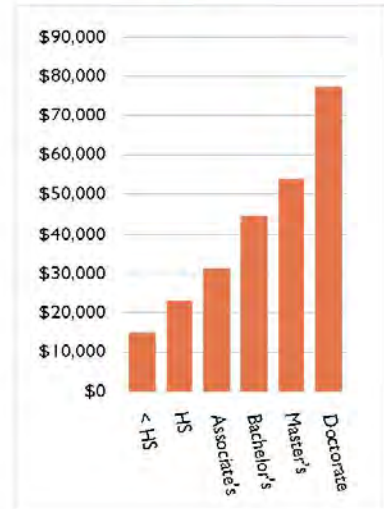
Student Perspective

Education Will Pay You Back—For a Lifetime



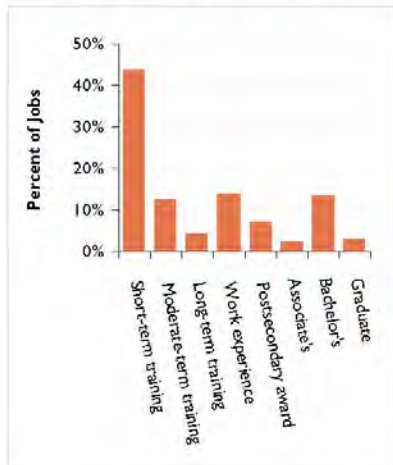
- Students enjoy an attractive 16.6% rate of return on their NFCC educational investment.
- Over the course of his or her working career, the average NFCC student's lifetime earnings will increase \$6.50 for every dollar invested in their NFCC education (in the form of tuition, fees, and forgone earnings).
- The average annual income of the typical associate's degree graduate in the NFCC Service Area at the midpoint of his or her career is \$31,100, 35% more than someone with a high school diploma.
- Over the course of a working lifetime, associate's degree graduates in the NFCC Service Area earn \$340,200 more than someone with a high school diploma (undiscounted).

Average Earnings in NFCC Service Area



Education Is Your Ticket to a Better Job

Projected 2022 Jobs in NFCC Service Area by Skill Level



- By 2022 it is anticipated that there will be about 13,900 new and replacement jobs available in the NFCC Service Area.
- About 19% of these jobs will require an education level equal to an associate's degree or greater.
- Another 7% of available jobs in 2022 will require some kind of post-secondary certificate or vocational award.



EMSI is a leading provider of socioeconomic impact and strategic planning tools to community and technical colleges in the US and Canada. Visit us at www.economicmodeling.com for more information. To see full documentation of the study, please contact the college.

MARCH 2013
 WWW.ECONOMICMODELING.COM
 866.999.3674



Taxpayer Perspective

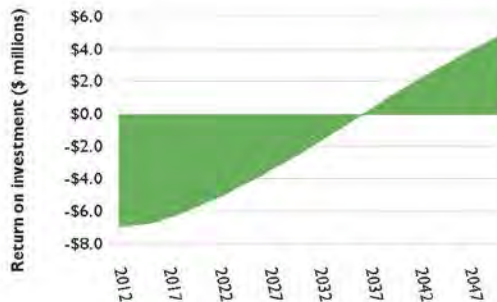
NFCC Leverages Taxpayer Dollars

- An estimated 85% of NFCC students remain in Florida and contribute to economic growth. Students who enter the workforce expand the tax base by generating higher earnings and reducing social costs.
- Higher student earnings and associated increases in property income generate about \$627,300 in added tax revenue each year.
- State government will save approximately \$26,400 in avoided social costs each year, including savings associated with improved health, lower costs of law enforcement, and fewer welfare claimants.



NFCC Generates a Return on Public Investment

Long-term Return to State Taxpayers on their NFCC Investment

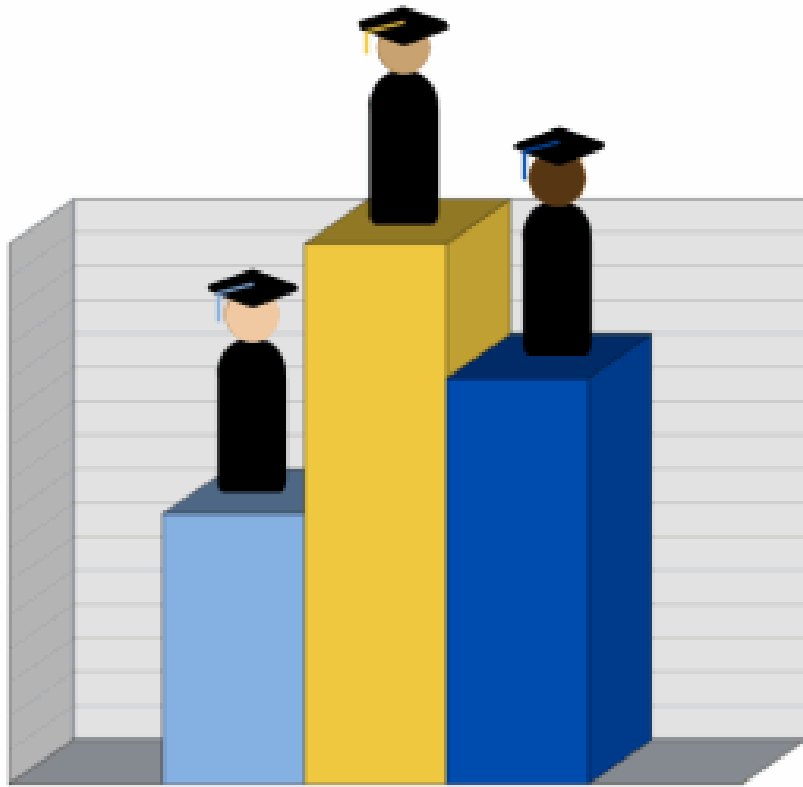


- State government allocated about \$7 million in support of NFCC in FY 2011-12.
- For every dollar appropriated by state government to NFCC, taxpayers will see a return with a cumulative added value of \$1.70 in the form of higher tax revenues and avoided social costs.
- State government will receive a rate of return of 5.7% on their investments in NFCC.

EMSI is a leading provider of socioeconomic impact and strategic planning tools to community and technical colleges in the US and Canada. Visit us at www.economicmodeling.com for more information. To see full documentation of the study, please contact the college.

MARCH 2013
WWW.ECONOMICMODELING.COM
866.999.3674





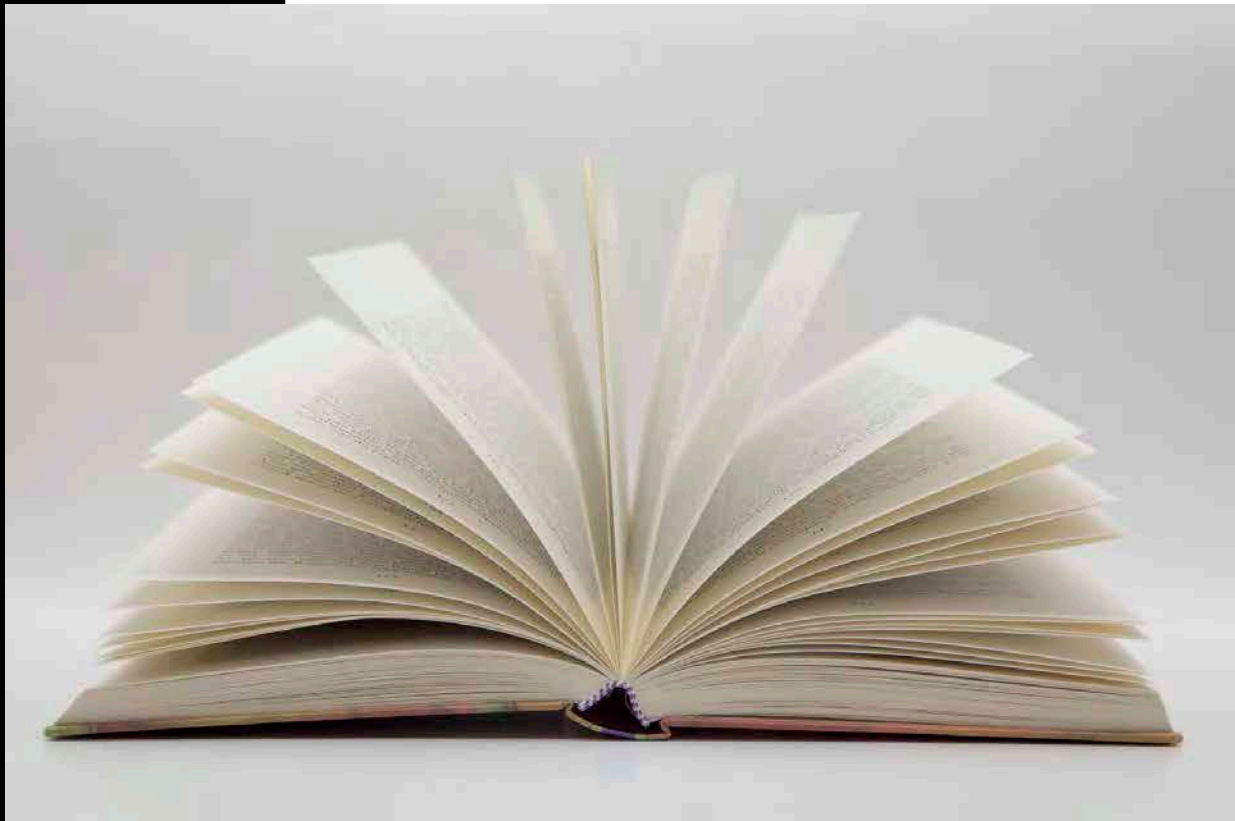
NFCC

College Rankings

Washington Monthly 2013 Community College Rankings

| | |
|----|---|
| 1 | Saint Paul College (MN) |
| 2 | North Florida Community College (FL) |
| 3 | North Dakota State College of Science (ND) |
| 4 | Wisconsin Indianhead Technical College (WI) |
| 5 | Lawson State Community College (AL) |
| 6 | Missouri State University-West Plains (M)) |
| 7 | Western Wyoming Community College (WY) |
| 8 | Capital Area Technical College (LA) |
| 9 | Snow College (UT) |
| 10 | North Central Missouri College (MO) |

| | Active & Collaborative Learning | Student Effort | Academic Challenge | Student-Faculty Interaction | Support for Learning | First-Year Retention Rate | Three-Year Graduation/ Transfer Rate | Credentials Awarded per 100 FTE Students |
|---|---------------------------------------|-------------------|-----------------------|--------------------------------|-------------------------|------------------------------|--|--|
| Saint Paul College (MN) | 80.0 | 71.3 | 61.5 | 71.7 | 66.2 | 52.6 | 47.0 | 24.9 |
| North Florida Community College (FL) | 62.2 | 58.3 | 61.1 | 65.1 | 67.4 | 56.9 | 56.0 | 40.7 |
| North Dakota State College of Science (ND) | 64.1 | 47.0 | 55.7 | 60.1 | 52.4 | 71.4 | 46.9 | 60.2 |
| Wisconsin Indianhead Technical College (WI) | 62.5 | 54.3 | 58.8 | 59.1 | 51.7 | 65.4 | 50.8 | 44.4 |
| Lawson State Community College (AL) | 65.8 | 59.4 | 59.3 | 59.0 | 57.0 | 58.9 | 49.3 | 18.2 |
| Missouri State University-West Plains (M)) | 56.5 | 58.8 | 54.0 | 59.2 | 57.9 | 59.2 | 49.8 | 40.5 |
| Western Wyoming Community College (WY) | 61.8 | 56.6 | 56.3 | 58.7 | 53.4 | 49.7 | 76.6 | 31.1 |
| Capital Area Technical College (LA) | 63.5 | 55.7 | 51.9 | 57.2 | 64.5 | 55.7 | 45.8 | 28.3 |
| Snow College (UT) | 65.2 | 50.8 | 52.4 | 53.7 | 55.2 | 54.6 | 74.3 | 43.8 |
| North Central Missouri College (MO) | 57.1 | 59.2 | 53.2 | 53.7 | 53.8 | 60.1 | 58.2 | 41.6 |



NFCC

Glossary of Terms

Glossary of Terms

Academic Year – The fall, spring, and summer terms of overlapping calendar years. For example, fall 2006, spring 2007, and summer 2007 comprise the 2006-2007 academic year. This differs from the reporting year, which begins with summer and ends with spring.

Accreditation – Certification by an official review board that specific requirements have been met. NFCC is accredited by the Southern Association of Colleges and Schools (SACS).

Adult Basic Education (ABE) – Education for adults to help them attain basic or functional literacy skills.

Advanced & Professional (A&P) – A program area with courses designed to provide the first two years of course work leading to an advanced or professional degree (bachelors, masters, etc.). It includes general education and specialized lower-division courses necessary to transfer into a degree program.

Associate in Arts (AA) – A program of instruction that consists of courses offered to freshmen and sophomores. This degree will transfer to the state university system and is awarded when a student completes 60 hours of college credit along with specified performance requirements.

Associate in Applied Science (AAS) – A program of instruction with courses to prepare students for entry into employment. These courses are usually not transferrable to a baccalaureate program.

Associate in Science (AS) – A program of instruction with courses to prepare students for entry into employment or college transfer. These courses are more likely transferrable to a baccalaureate program than the AAS.

College Credit – The type of credit assigned to courses that are part of an organized and specified college degree or program.

Credit Hour – The number of contact hours for a course.

Dual Enrollment – Enrollment in two institutions at the same time, such as a college and high school, which allows students to earn both high school and college credit simultaneously.

Duplicated Headcount – A headcount measure by which students may be counted in more than one category. This measure usually describes the number of seats taken across multiple courses.

First Time in College (FTIC) – A student attending college for the first time with no prior credit toward a degree or formal award.

Full-time Equivalency (FTE) – A measure to describe various cohorts of students based on the number of student credit hours generated. FTE is computed by dividing the total number of credit or clock hours by 30.

Full-time Student – A student who is registered for 12 or more credit hours in the fall and spring semesters or four or more credit hours in the summer semester.

General Education Development (GED)Test – A measure designed to provide an opportunity for adults who have not graduated from high school to earn a State of Florida High School diploma by measuring the major academic skills and knowledge associated with a high school program of study.

Part-time Student – A student who is registered for less than 12 credit hours in the fall and spring terms or fewer than four credit hours in the summer term.

Postsecondary Adult Vocational Program (PSAV) – Job preparatory programs through which a student may receive a vocational certificate upon completion of instruction.

Postsecondary Vocational (PSV) – Vocational education for students who have left or completed high school and who are enrolled in an organized program of study for which credit is given toward an associate degree.

Reporting Year – The summer, fall, and spring terms of overlapping calendar years. For example, summer 2006, fall 2007, and spring 2007 comprise the 2006-2007 reporting year. This differs from the academic year, which begins with fall and ends with summer.

Returning Students – Students enrolled for the current term who were also enrolled in a prior term at the College.

Unduplicated Headcount – A headcount measure by which students are counted in only one category.

Vocational Certificate – The award for satisfactory completion of a program of study designed to prepare students for entry into an occupation.

Workforce Education Program – Training and/or retraining for adults who are out of school and already in the workforce.



NFCC

Campus Directory

Campus Directory

General Information: (850) 973-2288 or go to www.nfcc.edu

Academic Affairs | (850) 973-1603 | academicaffairs@nfcc.edu

Academic Department Chairs

- Social Science, Business, Education, and Computer Science
Sharon Brave Heart | (850) 973-1619 | bravehearts@nfcc.edu
 - Communications, History, Humanities, Art, and Foreign Language
Jason Welch | (850) 973-9415 | welchj@nfcc.edu
 - Mathematics, Biological and Physical Science
Dr. Michael Stine | (850) 973-1645 | stinem@nfcc.edu
 - Developmental Education and Student Life Skills
Efrain Bonilla | (850) 973-1718 | bonillae@nfcc.edu
-

Academic Success Center | (850) 973-1719 | asc@nfcc.edu

Administrative Services | (850) 973-1604 | adminserv@nfcc.edu

Admissions | (850) 973-1622 or 9405 | admissions@nfcc.edu

Advising - advising@nfcc.edu

- Allied Health | (850) 973-1662 | bassd@nfcc.edu
 - Career and Technical Education | (850) 973-9440 | dunkled@nfcc.edu
 - College Credit | (850) 973-9455 | wilkersonp@nfcc.edu
 - Developmental Education | (850) 973-9455 | wilkersonp@nfcc.edu
 - Student Support Services | (850) 973-9432 | studentsupportservices@nfcc.edu
-

Allied Health | (850) 973-1626 | alliedhealth@nfcc.edu

- Patient Care Technician
 - Practical Nursing
 - Registered Nursing
-

Alumni Affairs | (850) 973-9423 | alumni@nfcc.edu

Artist Series / Children's Theater | (850) 973-1653 | artistseries@nfcc.edu

Audio-Video Support | (850) 973-9456 | audiovisual@nfcc.edu

Auditorium (Van H. Priest Auditorium lobby) | (850) 973-9408

- Auditorium Rental (Van H. Priest Auditorium) | (850) 973-9443 | huberts@nfcc.edu
-

Bookstore (Virtual Bookstore) | (850) 973-9437 | bookstore@nfcc.edu

Business Office | (850) 973-1610 or 9438

Campus Services (Maintenance) | (850) 973-9445 or 9444 | maintenance@nfcc.edu

Career Center | (850) 973-1623 | careercenter@nfcc.edu

College Advancement (PR/Marketing) | (850) 973-1653 | news@nfcc.edu

Community Theatre | (850) 973-9481 | belld@nfcc.edu

Computer Services, Campus | (850) 973-1672 | computerservices@nfcc.edu

Custodial Services | (850) 973-9421

Distance Learning | 973-1603 | distancelearn@nfcc.edu

Developmental Education Program | (850) 973-1718 | bonillae@nfcc.edu

Dual Enrollment | (850) 973-9450 or 9405 | dualenrollment@nfcc.edu

Duplication Center (on campus) | (850) 973-9420 | duplication@nfcc.edu

Emergency Medical Services | (850) 973-1673 | leggetta@nfcc.edu

Financial Aid | (850) 973-1621 | financialaid@nfcc.edu

Fitness and Wellness Center | (850) 973-1609 or 973-1639 | fitnesscenter@nfcc.edu

Food Services | (850) 973-9465 | foodservice@nfcc.edu

Foundation (NFCC, Inc.) | (850) 973-9423 | foundation@nfcc.edu

Human Resources | (850) 973-9448 | humanresources@nfcc.edu

Institutional Effectiveness | 973-1679 | taylors@nfcc.edu

Institutional Research | 973-1679 | taylors@nfcc.edu

Learning Resource Center | (850) 973-9411 | LRC@nfcc.edu

Library | (850) 973-1624 | library@nfcc.edu

Maintenance | (850) 973-9444 or 9445 | maintenance@nfcc.edu

Medical Administrative Specialist Program | (850) 973-1633 | lesleint@nfcc.edu

Nature Center (Ladell Brothers) | (850) 973-1645 | stinem@nfcc.edu

Ombudsman, Student | (850) 973-1619 | ombud@nfcc.edu

Patient Care Technician | (850) 973-1662 | alliedhealth@nfcc.edu

Personnel | (850) 973-9448 | humanresources@nfcc.edu

Practical Nursing | (850) 973-1662 | alliedhealth@nfcc.edu

President's Office | (850) 973-1618 or 1601 | president@nfcc.edu

Public Relations/Media | (850) 973-1653 | news@nfcc.edu

Public Safety Academy | (850) 973-1617 | criminaljustice@nfcc.edu

Purchasing | (850) 973-1675 | purchasing@nfcc.edu

Recruitment and Student Development | (850) 973-1623 | recruitment/studentdevelopment@nfcc.edu

Registered Nursing (A.D.N.) | (850) 973-1662 | alliedhealth@nfcc.edu

Registrar | (850) 973-9469 | registrar@nfcc.edu

Resource Development | (850) 973-9423 | foundation@nfcc.edu

Scholarships (Foundation) | (850) 973-9423 | foundation@nfcc.edu

Security Office | (850) 973-0280

Sentinel Cafe (Snack Bar) | (850) 973-9496 | foodservice@nfcc.edu

Student Center | (850) 973-9481 | studentcenter@nfcc.edu

Student Clubs/Organizations | (850) 973-9481 | studentclubs/organizations@nfcc.edu

Student Disability Services | (850) 973-1683 | studentdisabilityservices@nfcc.edu

Student Support Services | (850) 973-1683 | studentsupportservices@nfcc.edu

Testing Center | (850) 973-9451 | testing@nfcc.edu

Transcripts/Records | (850) 973-1612 | transcripts@nfcc.edu

TTY Phone Access | (850) 973-1611

Veteran Affairs | (850) 973-1622 | veteranaffairs@nfcc.edu

Vocational Programs | (850) 973-9455 | vocationalprograms@nfcc.edu

Wardlaw-Smith-Goza Conference Center | (850) 973-9423 | foundation@nfcc.edu

Webmaster (www.nfcc.edu) | (850) 973-9424 | webmaster@nfcc.edu

Campus Map



NORTH FLORIDA COMMUNITY COLLEGE CAMPUS MAP

- | | | |
|---|--|---|
| 1. Van H. Priest Auditorium | 9. Student Center | 18. Warehouse |
| 2. Administrative Services Building | 10. Fine Arts Building/Faculty Offices | 19. Sentinel Baseball Field |
| 3. Walter L. Bishop Administration Building | 11. Hardee Center for the Arts | 20. Frank Cantey Softball Field |
| 4. Marshall Hamilton Library | 12. Colin P. Kelly Fitness Center | 23. Ladell Brothers Environmental Center |
| 5. Technology Center | 13. Career and Technical Center | 32. College Advancement/Artist Series |
| 6. College Preparatory Education/ Mathematics Classrooms | 14. Warehouse | 33. University Programs/Saint Leo Office |
| 7. Business Education Building | 15. Greenhouse | 34. Morris G. Steen Jr. Science Learning Cntr |
| 8. General Classrooms/Faculty Offices | 16. Testing Center | 35. Public Safety Academy |
| | 17. Maintenance Building | 36. Government Relations Office |